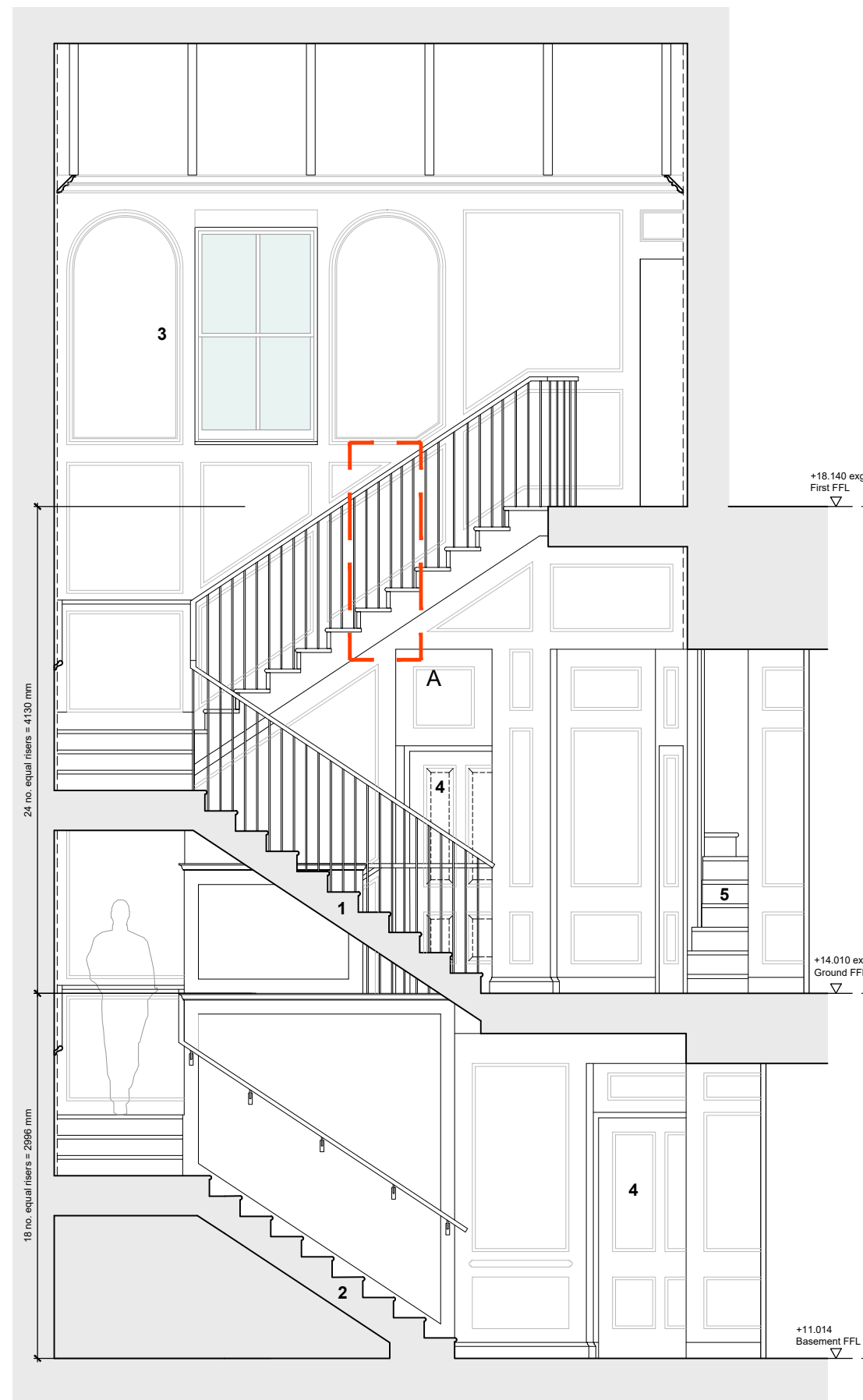


Section AA @ 1:50

SECTION KEY:

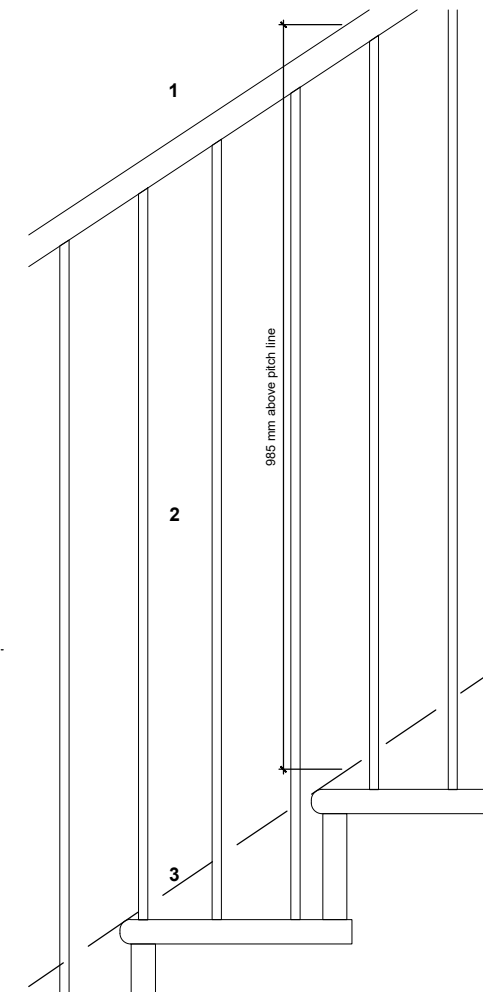
1. New timber staircase from ground to first floor
2. New pc concrete staircase from basement to ground floor with stone treads and risers
3. New timber wall-panelling and corning, reversible
4. New timber panelled doors, see door details
5. Original staircase retained and repaired



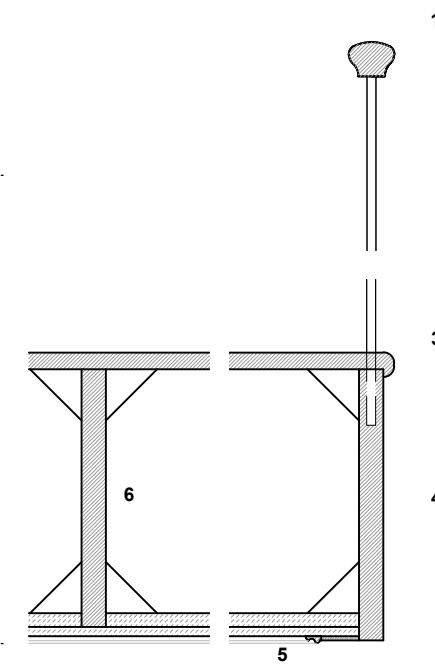
Section BB @ 1:50

DETAIL KEY:

1. 62 x 45 mm profile hardwood handrail, formed to curves and radiused corners
2. 12 mm square profile painted metal baluster rods
3. Solid Oak treads with bullnose profile perimeter nosing
4. Painted saw-tooth profile timber stringer
5. Sloping soffit in panelled mdf with applied bed mould panel beads
6. Intermediate timber carriage with strengthening blocks, to struct. eng requirements to avoid springing and deflection of treads

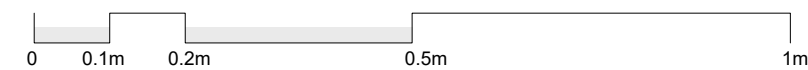


Detail Elevation A @ 1:10



Detail Section B @ 1:10

Scale bar @ 1:10

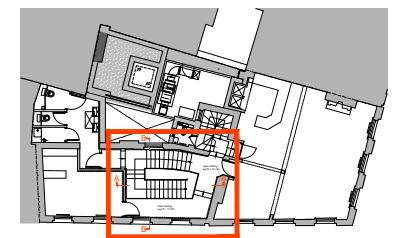


The use of this data by the recipient acts as an agreement of the following statements. Do not use this data if you do not agree with any of the following statements:-

All drawings are based upon site information supplied by third parties and as such their accuracy cannot be guaranteed. All features are approximate and subject to clarification by a detailed topographical survey, statutory service enquiries and confirmation of the legal boundaries.

Do not scale the drawing. Use figured dimensions in all cases. Check all dimensions on site.

Report any discrepancies in writing to Palmer Lunn Architects before proceeding.



Key Plan at 1st Floor

P01 Draft Issue 20.01.21 AMe APa

Rev	Description	Date	Drn	Chk

Status
PLANNING

Client
Bohemia Club

Project
The Apple Tree Public House
45 Mount Pleasant
London WC1X 0AE

Drawing
Main Staircase Details
SHEET 2 OF 2

Project No.	Drawing No.	Revision
18003	BHM-A-P-211	P01

Scale @ A3 Drawn By
1:50/10 AMe

palmer lunn architects
www.palmerlunn.com