

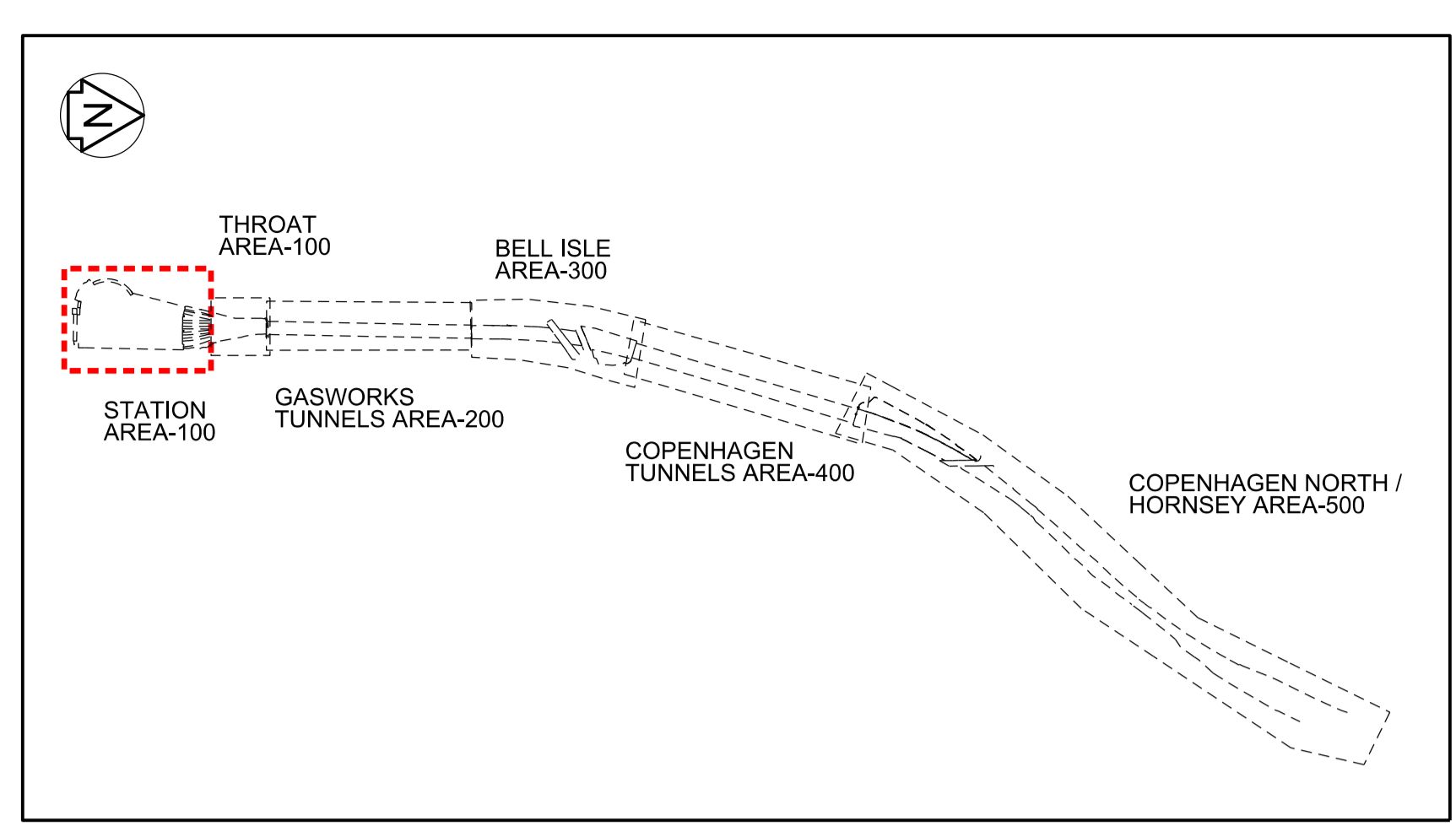
Project Name:	152319 Kings Cross Re-Modelling				
Scheme Title:	Platform Modifications				
Subject:	Pack 7				
Location or Local Name:	King's Cross				
CARRS & ELLIPSE ASSET LONGITUDINAL POSITION along the RAILWAY INFRASTRUCTURE:					
Item(s)	ELR	Unified Scheme Chainage (Meters)	Miles	Yards	OS Grid Ref
OLE - E/0016CMA	ECM1	+283.500			TQ302833
Lighting Column - LC2-3/1	ECM1	+257.000			TQ302833
Lighting Column - LC2-3/2	ECM1	+269.000			TQ302833
Lighting Column - LC2-3/3	ECM1	+280.000			TQ302833
Lighting Column - LC2-3/4	ECM1	+292.500			TQ302833
Lighting Column - LC2-3/5	ECM1	+303.500			TQ302833

These notes are based on the use of experienced and competent contractors carrying out the work using an approved safe method of working.

Key to Health and Safety Symbols

- Indicates a residual risk requiring a compulsory action
- Indicates a residual risk for information
- Indicates a residual risk requiring a prohibitive action
- Indicates a residual risk as a warning

Safety, Health and Environmental Information	
Notes below are additional to hazards/risks normally associated with this type of work. Numbers correspond to Risk Register references - see General Notes drawing for details.	
Construction	
▲ C04	Services on platform wall and buried within platform
● C07	Damage/stability of existing foundation
Operations, maintenance	
▲ OM05	OLE masts - new climbing hazard
▲ OM06	Tanking points - slips, trips & falls
▲ OM08	Proposed platform cross falls are non-compliant
▲ OM15	Metal structure not bonded
Dismantling / Demolition (Future)	
No risk identified	
Refer to general notes and the Principal Contractor for more information about the risks associated with this work.	



APPROVED FOR CONSTRUCTION
 SIGNED: IAN CARTER
 DATE: 24/03/2020
 CONTRACTORS ENGINEERING MANAGER

- Legend/Notes
- DO NOT SCALE FROM DRAWING. USE FIGURED DIMENSIONS ONLY.
 - ALL DIMENSIONS ARE IN MILLIMETRES AND LEVELS ARE IN METRES A.O.D.
 - DRAWING TO READ IN CONJUNCTION WITH:
 - 152319-MOS-DRG-ECV-070014 - PLATFORMS 2/3 DEMOLITION PLAN SUBSURFACE
 - 152319-MOS-DRG-ECV-070015 - PLATFORMS 2/3 DEMOLITION PLAN SURFACE
 - 152319-MOS-DRG-ECV-070016 - PLATFORMS 2/3 DEMOLITION PLAN SURFACE
 - 152319-MOS-DRG-ECV-070035 - PLATFORMS 2/3 DEMOLITION SECTIONS
 - 152319-MOS-DRG-ECV-070036 - PLATFORMS 2/3 DEMOLITION SECTIONS
 - 152319-MOS-SCH-ECV-070200 - CHAMBER SCHEDULE
 - 152319-MOS-DRG-ECV-070235 - PLATFORMS 2/3 PROPOSED SECTIONS
 - 152319-MOS-DRG-ECV-070236 - PLATFORMS 2/3 PROPOSED SECTIONS
 - THIS DESIGN HAS BEEN BASED UPON LDO 'XX' Master Federated Model Tracker' AS EXPORTED ON 04/03/20.
 - START OF PLATFORM 2 = CH. 18.01
 END OF PLATFORM 2 = CH. 291.18
 PLATFORM 2 TOTAL LENGTH = 273.18m
 START OF PLATFORM 3 = CH. 17.98
 END OF PLATFORM 3 = CH. 306.33
 PLATFORM 3 TOTAL LENGTH = 288.35m
 - COPERS ARE TO BE CHECKED FOR DAMAGE PRIOR TO RE-USE. CRACKED OR CHIPPED COPERS ARE NOT TO BE RE-USED.
 - LOCATION OF ANY 4FT FOUL DRAINAGE CATCHPITS AND FOUL DRAINAGE ROUTE TO BE CHECKED PRIOR TO CONSTRUCTION.
 - ALL METAL STRUCTURES TO BE BONDED.
 - PLATFORM EDGE BASED ON MODEL 152319-ITD-MOD-ETR-107071 P01.1 USED
 - PLATFORM SETTING OUT IN ACCORDANCE WITH:
 - 152319-AVS-REP-ETR-000048
 - 152319-AVS-REP-ETR-000057

KEY :

COLOUR CONVENTIONS

- BLACK - EXISTING OR UNCHANGED
- BLUE - MODIFIED OR TO BE MOVED
- GREEN - REDUNDANT OR TO BE REMOVED
- RED - PROPOSED OR ADDITIONAL
- PURPLE - WORKS BY OTHERS
- ORANGE - FUTURE WORKS
- CYAN - TEMPORARY WORKS

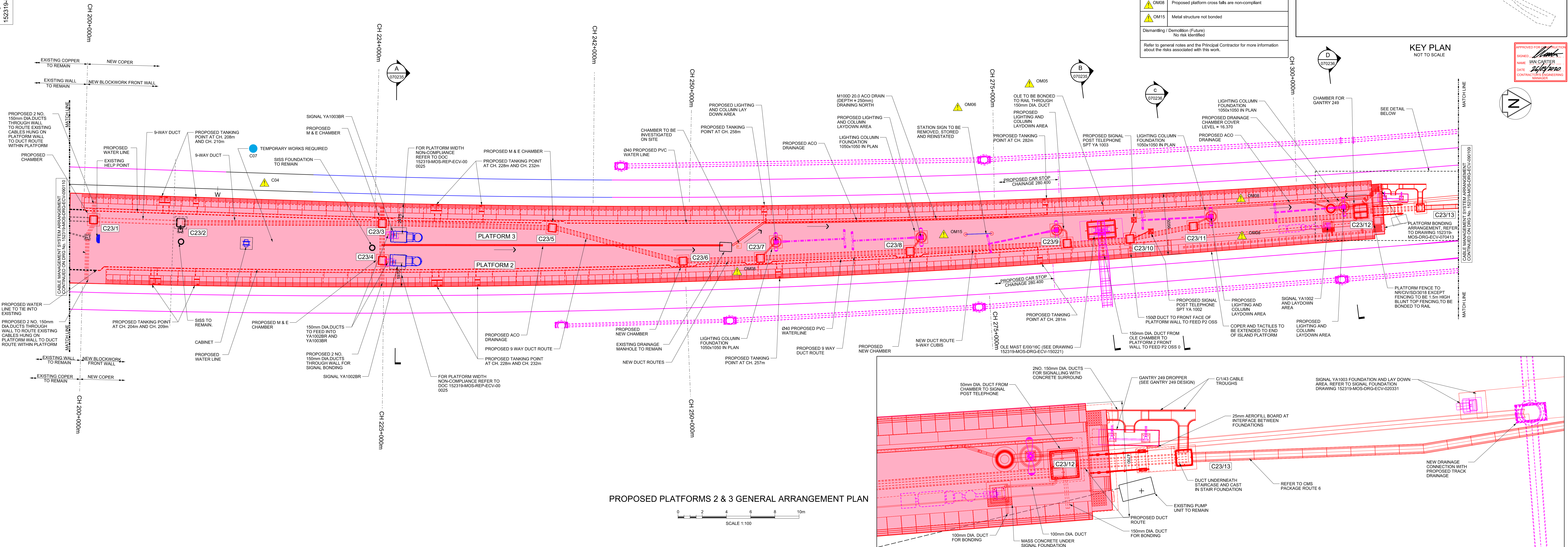
PLATFORM SURFACE TO BE RENEWED

Issue No.	Date	Issued For	JE	HM	HS
P02.1	17/12/19	Issued for Construction	JE	HM	HS
C01	18/12/19	Issued for Construction	JE	HM	HS
P03.1	11/03/20	Issued for Construction	JE	HM	HS
C02	13/03/20	Issued for Construction	JE	HM	HS

Accepted for Stage 6

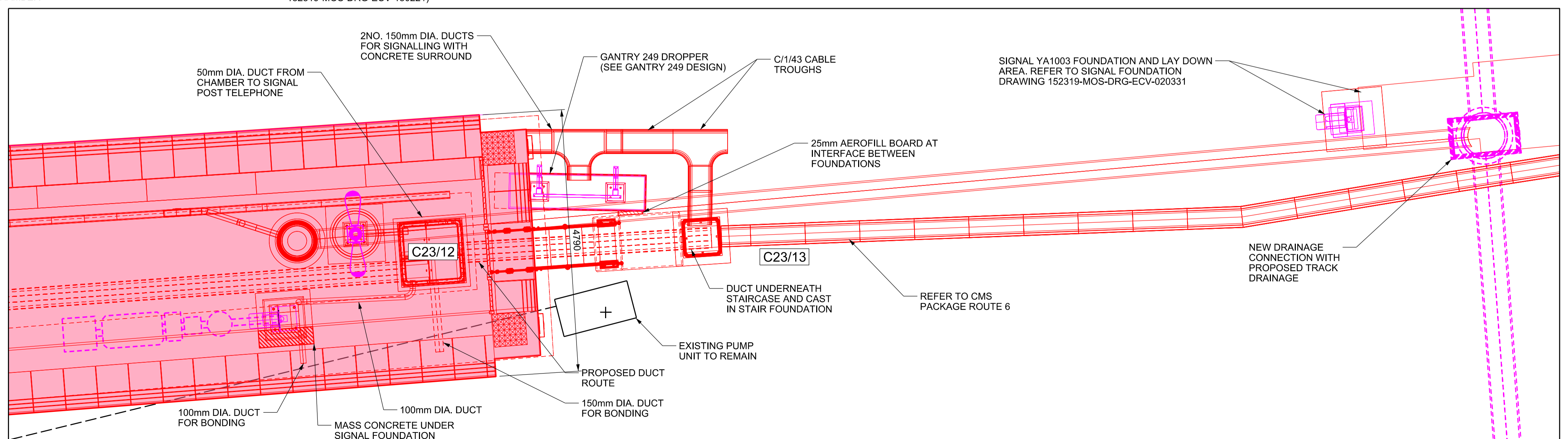
NetworkRail

Authorised	ICARTER	Signed	IC	Date	13/03/20
Contract No.	Morgan Sindall Plc				
Location/Level	No Specific Location				
Type	CAD Drawing		Subtype: General Arrangement		
Role	Civil Engineer		Discipline: Civils		
Volume/System	No Specific Volume or System				
Phasing	Proposed		Grip Stage: 6		
Project	Kings Cross Remodelling				
Contract No.					
Contract Title					
Drawing Title	King's Cross Station Platform Extension and Modification Proposed General Arrangement Platform 2/3				
Designed	J.ELLIS	Signed	JE	Date	11/03/20
Drawn	H.HO	Signed	HH	Date	11/03/20
Checked	H.SIMPSON	Signed	HS	Date	11/03/20
Approved		Signed		Date	
Scale(s)	1:100		E/C & H Stage: ECM1 to 0m 353yds		
Alternative Reference	L118008		Sheet 1 of 1		
Drawing Number	152319-MOS-DRG-ECV-070102		Revision C02		



PROPOSED PLATFORMS 2 & 3 GENERAL ARRANGEMENT PLAN

SCALE 1:100



PROPOSED PLATFORM 2 & 3 END