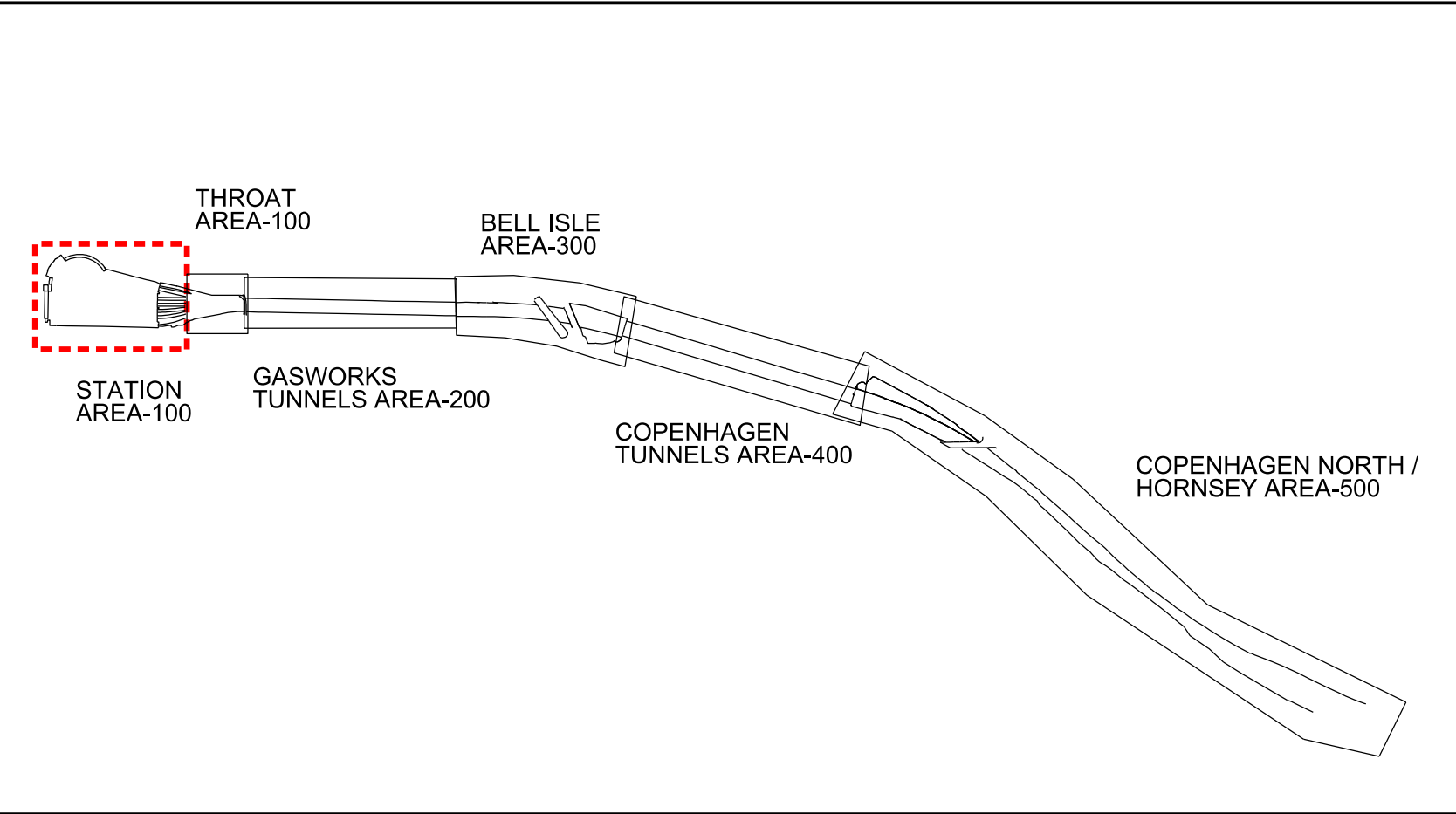


These notes are based on the use of experienced and competent contractors carrying out the work using an approved safe method of working

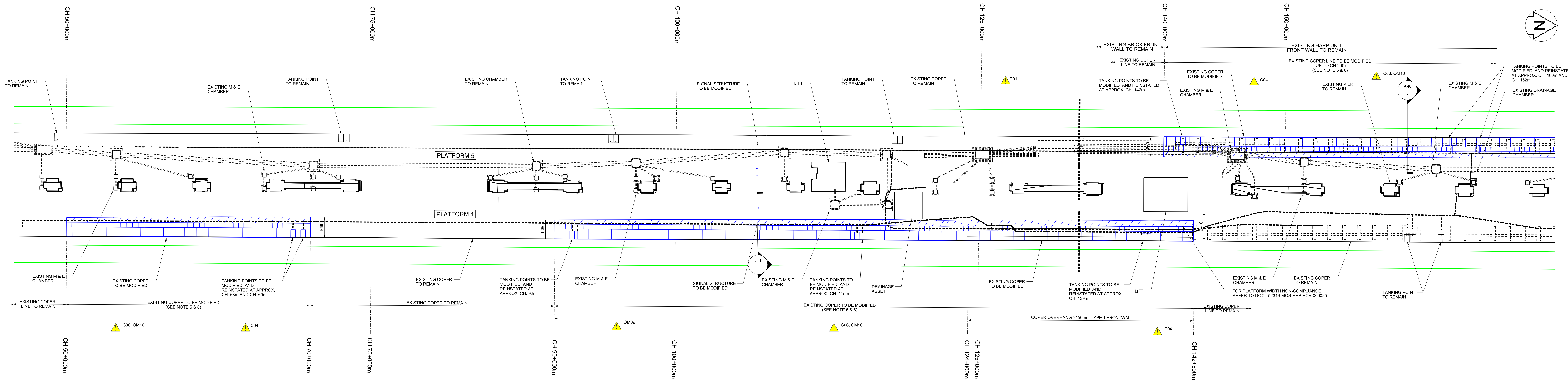
Key to Health and Safety Symbols

- Indicates a residual risk requiring a compulsory action
- ⓘ Indicates a residual risk for information
- ⊘ Indicates a residual risk requiring a prohibitive action
- ⚠ Indicates a residual risk as a warning

Safety, Health and Environmental Information	
Notes below are additional to hazards/risks normally associated with this type of work. Numbers correspond to Risk Register references - see General Notes drawing for details.	
Construction	
⚠ C01	Asbestos within existing platform structure
⚠ C04	Services on platform wall and buried within platform
⚠ C06	Failure of re-used coped stones
Operations, Maintenance, No risk identified	
⚠ OM09	Existing refuge areas insufficient and access difficult
⚠ OM16	New/Modified copers cannot support 10kN vehicle load
Dismantling / Demolition (Future) No risk identified	
Refer to general notes and the Principal Contractor for more information about the risks associated with this work.	



- Legend/Notes**
- DO NOT SCALE FROM DRAWING, USE FIGURED DIMENSIONS ONLY.
 - ALL DIMENSIONS ARE IN MILLIMETRES AND LEVELS ARE IN METRES AOD.
 - DRAWING TO READ IN CONJUNCTION WITH:
 - 152319-MOS-DRG-ECV-070017 - PLATFORMS 4/5 DEMOLITION PLAN SUBSURFACE
 - 152319-MOS-DRG-ECV-070018 - PLATFORMS 4/5 DEMOLITION PLAN SURFACE
 - 152319-MOS-DRG-ECV-070040 - PLATFORMS 4/5 DEMOLITION SECTIONS
 - 152319-MOS-DRG-ECV-070041 - PLATFORMS 4/5 DEMOLITION SECTIONS
 - 152319-MOS-DRG-ECV-070042 - PLATFORMS 4/5 PROPOSED PLATFORM
 - 152319-MOS-DRG-ECV-070240 - PLATFORMS 4/5 PROPOSED SECTIONS
 - 152319-MOS-DRG-ECV-070241 - PLATFORMS 4/5 PROPOSED SECTIONS
 - 152319-MOS-DRG-ECV-070410 - PROPOSED DETAILS SHEET 1
 - 152319-MOS-DRG-ECV-070410 - PROPOSED DETAILS SHEET 2
 - 152319-MOS-DRG-ECV-070410 - PROPOSED DETAILS SHEET 3
 - PROPOSED (DESIGN) CHANGES SHOWN ON DRAWING.
 - CONDITION OF EXISTING WALL TO BE ASSESSED FOR RE-USE.
 - COPERS ARE TO BE CHECKED FOR DAMAGE PRIOR TO RE-USE. CRACKED OR CHIPPED COPERS ARE NOT TO BE RE-USED.
 - THIS DESIGN HAS BEEN BASED UPON LDO 'KX' MASTER FEDERATED MODEL. TRACKER AS EXPORTED ON 04/03/20.
 - WHERE COPER HANG >150mm PLATFORM FRONT WALL IS TO BE MODIFIED, REFER TO DRAWING 152319-MOS-DRG-ECV-070401 & 070410.



KEY :

- ▨ PLATFORM SURFACE TO BE TIED IN

COLOUR CONVENTIONS

- BLACK - EXISTING OR UNCHANGED
- BLUE - MODIFIED OR TO BE MOVED
- GREEN - REDUNDANT OR TO BE REMOVED
- RED - PROPOSED OR ADDITIONAL
- PURPLE - WORKS BY OTHERS
- ORANGE - FUTURE WORKS
- CYAN - TEMPORARY WORKS

Rev	Date	Description of Revisions	Drawn	Chkd	Appr	Submittal
PO2.1	17/12/19	Issued for Construction		MP	HH	
C01	18/12/19	Issued for Construction		MP	HH	HS
PO3.1	11/03/20	Issued for Construction		JE	HH	HS
C02	13/03/20	Issued for Construction	JE	HH	HS	

Accepted for Stage 6 **A6**



Authorised: I.CARTER Signed: IC Date: 13/03/20

Morgan Sindall Plc

Location/Level: No Specific Location

Type: CAD Drawing Subtype: General Arrangement

Role: Civil Engineer Discipline: Civils

Volume/System: No Specific Volume or System

Phasing: To be Removed Grip Stage: 6

King's Cross Remodelling

Contract No.:

Contract Title:

Drawing Title:

King's Cross Station Platform Extension and Modification Existing Platforms 4/5 Demolition Plan - Surface 2 of 2

Designated	Signed	Date
Drawn: J.ELLIS	Signed: JE	Date: 11/03/20
Checked: H.HO	Signed: HH	Date: 11/03/20
Approved: H.SIMPSON	Signed: HS	Date: 11/03/20

Scale: 1:100 ELEM Message: ECM1 to 0m 353yds

Alternative Reference: L118008 Sheet: 1 of 1

Drawing Number: 152319-MOS-DRG-ECV-070019 Revision: C02

EXISTING PLATFORMS 4 & 5 GENERAL ARRANGEMENT AND DEMOLITION PLAN - SURFACE
SCALE 1 : 100

