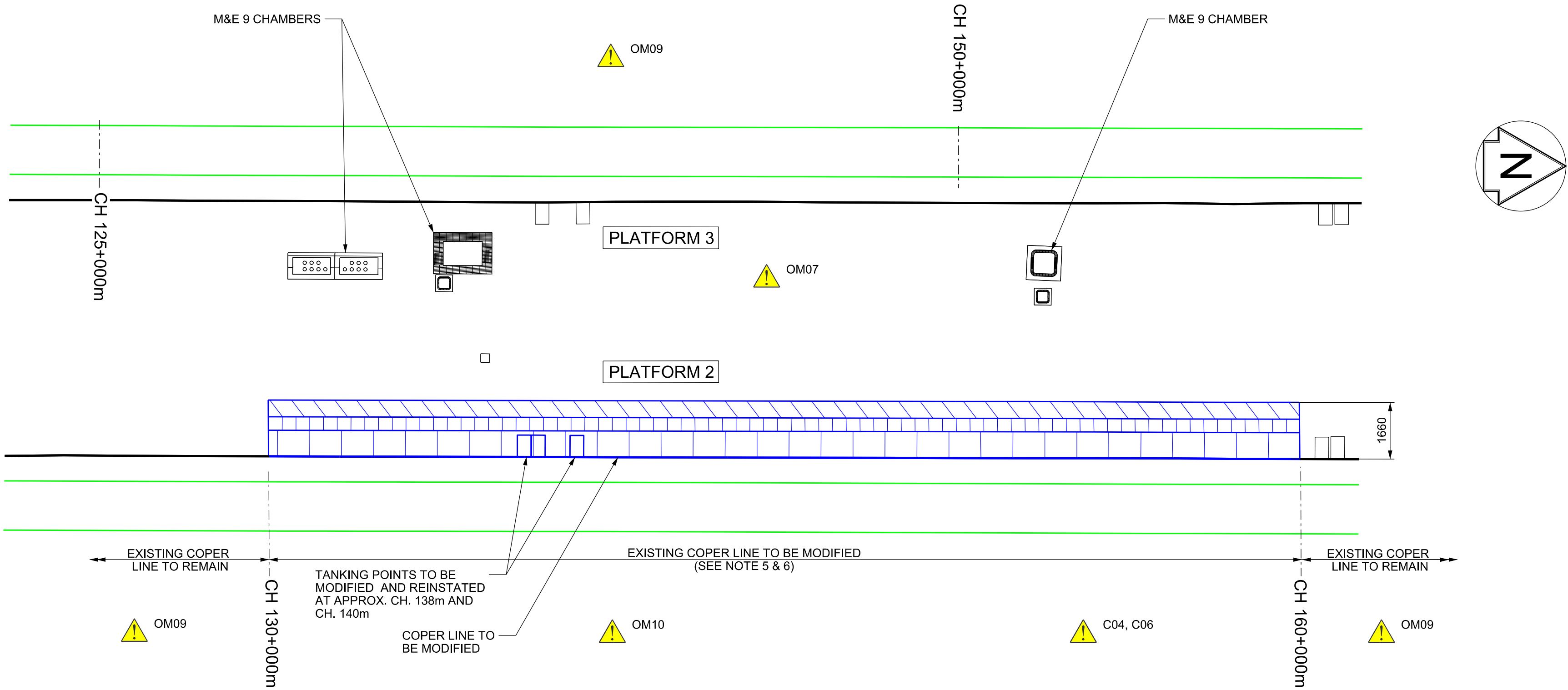
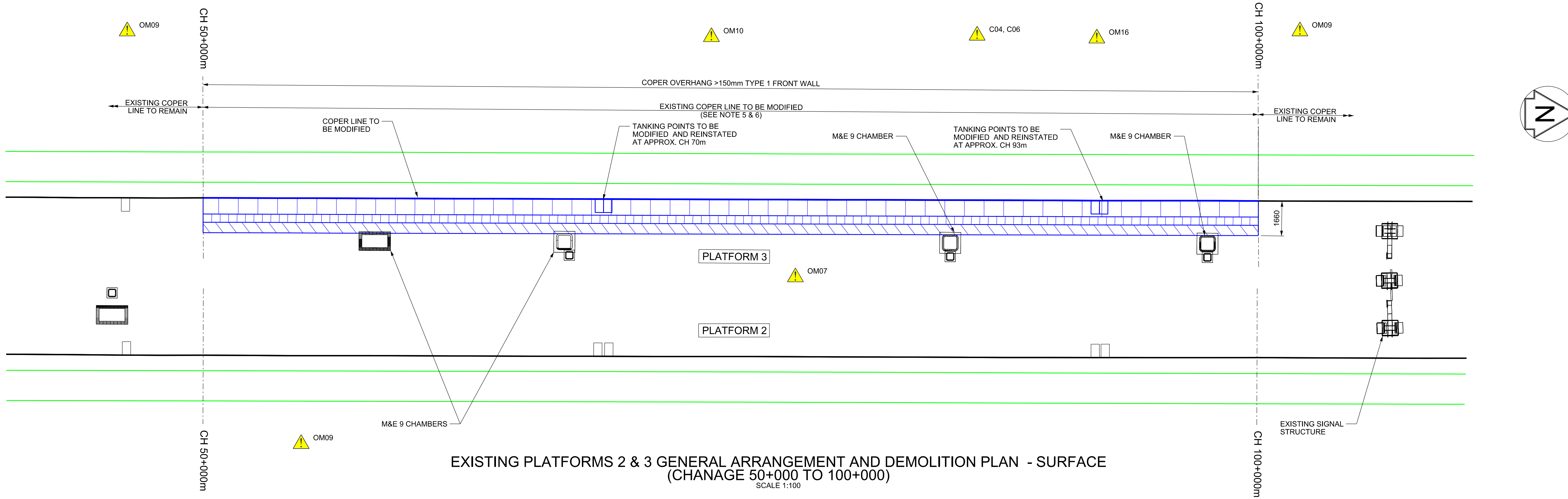


Safety, Health and Environmental Information	
Notes below are additional to hazards/risks normally associated with this type of work. Numbers correspond to Risk Register references - see General Notes drawing for details.	
Construction	
⚠ C01	Asbestos within existing platform structure
⚠ C04	Services on platform wall and buried within platform
⚠ C06	Failure of re-used coper stones
Operations, Maintenance, No risk identified	
⚠ OM07	Existing platform cross falls to remain non-compliant or made worse by proposed works
⚠ OM09	Existing refuge areas insufficient and access difficult
⚠ OM10	Refuge areas where coper modifications are proposed are non compliant (less than 300mm)
⚠ OM16	New/modified coper cannot support 10kN vehicular load
Dismantling / Demolition (Future) No risk identified	
Refer to general notes and the Principal Contractor for more information about the risks associated with this work.	

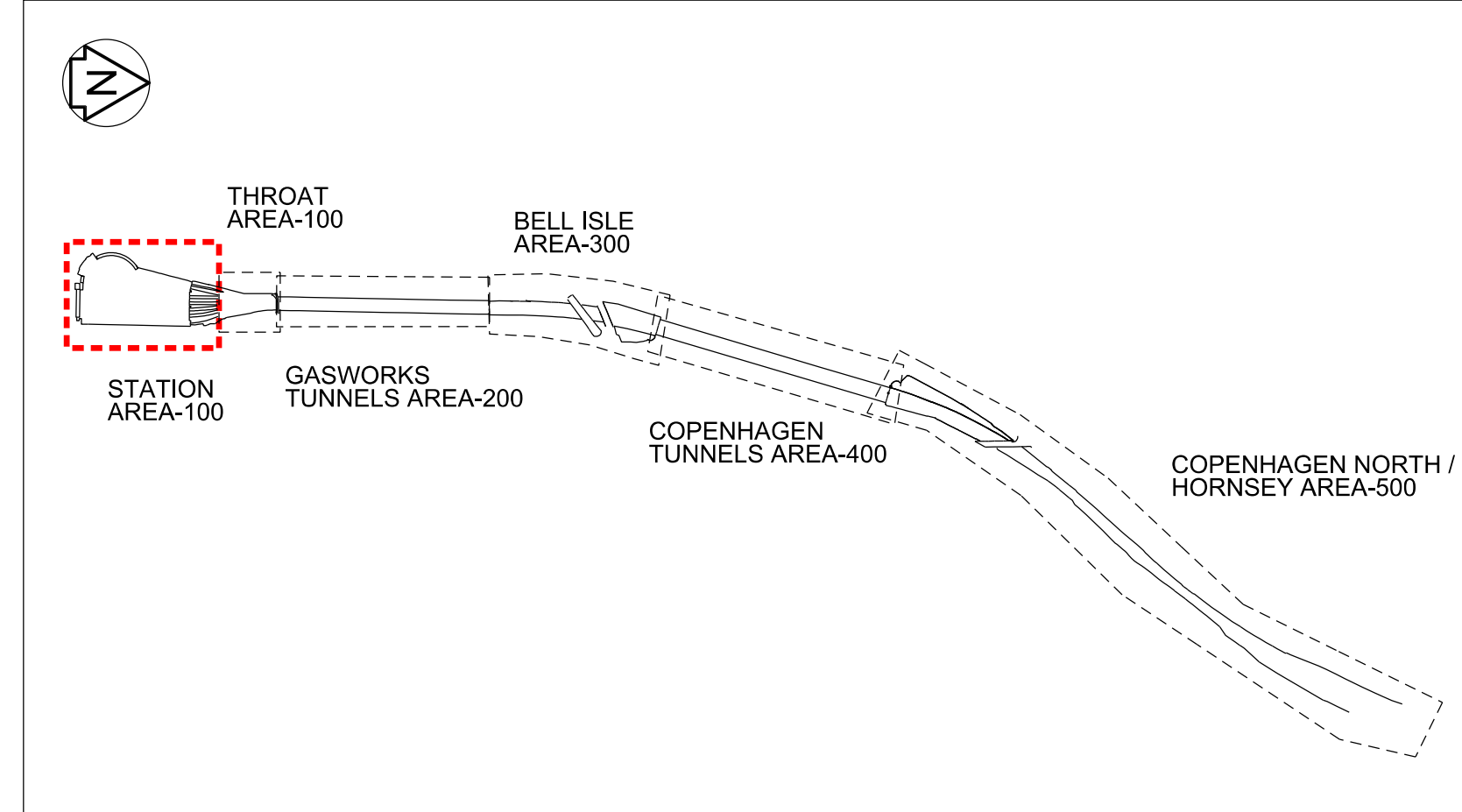
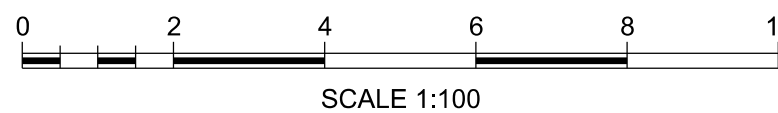
These notes are based on the use of experienced and competent contractors carrying out the work using an approved safe method of working	
Key to Health and Safety Symbols	
ⓘ	Indicates a residual risk requiring a compulsory action
ⓘ	Indicates a residual risk for information
⊘	Indicates a residual risk requiring a prohibitive action
⚠	Indicates a residual risk as a warning



EXISTING PLATFORMS 2 & 3 GENERAL ARRANGEMENT AND DEMOLITION PLAN - SURFACE  
(CHANAGE 130+000 TO 160+000)  
SCALE 1:100



EXISTING PLATFORMS 2 & 3 GENERAL ARRANGEMENT AND DEMOLITION PLAN - SURFACE  
(CHANAGE 50+000 TO 100+000)  
SCALE 1:100



KEY PLAN  
NOT TO SCALE

Legend/Notes

- DO NOT SCALE FROM DRAWING, USE FIGURED DIMENSIONS ONLY.
- ALL DIMENSIONS ARE IN MILLIMETRES AND LEVELS ARE IN METRES AOD.
- DRAWING TO READ IN CONJUNCTION WITH:
  - 152319-MOS-DRG-ECV-070015 - PLATFORMS 2/3 DEMOLITION PLAN SURFACE
  - 152319-MOS-DRG-ECV-070017 - PLATFORMS 2/3 DEMOLITION PLAN SURFACE
  - 152319-MOS-DRG-ECV-070035 - PLATFORMS 2/3 DEMOLITION SECTIONS
  - 152319-MOS-DRG-ECV-070036 - PLATFORMS 2/3 DEMOLITION SECTIONS
  - 152319-MOS-DRG-ECV-070102 - PLATFORMS 2/3 PROPOSED PLATFORM
  - 152319-MOS-DRG-ECV-070235 - PLATFORMS 2/3 PROPOSED SECTIONS
  - 152319-MOS-DRG-ECV-070236 - PLATFORMS 2/3 PROPOSED SECTIONS
  - 152319-MOS-DRG-ECV-070401 - PROPOSED DETAILS SHEET 1
  - 152319-MOS-DRG-ECV-070410 - PROPOSED DETAILS SHEET 3
- PROPOSED (DESIGN) CHAINAGES SHOWN ON DRAWING.
- CONDITION OF EXISTING WALL TO BE ASSESSED FOR RE-USE.
- COPERS ARE TO BE CHECKED FOR DAMAGE PRIOR TO RE-USE. CRACKED OR CHIPPED COPERS ARE NOT TO BE RE-USED.
- THIS DESIGN HAS BEEN BASED UPON LDO 'X' MASTER FEDERATED MODEL TRACKER' AS EXPORTED ON 04/03/20.
- WHERE COPER HANG>150mm PLATFORM FRONT WALL IS TO BE MODIFIED, REFER TO DRAWING 152319-MOS-DRG-ECV-070401 & 070410.

KEY :

PLATFORM SURFACE TO BE TIED IN

COLOUR CONVENTIONS

BLACK - EXISTING OR UNCHANGED  
BLUE - MODIFIED OR TO BE MOVED  
GREEN - REDUNDANT OR TO BE REMOVED  
RED - PROPOSED OR ADDITIONAL  
PURPLE - WORKS BY OTHERS  
ORANGE - FUTURE WORKS  
CYAN - TEMPORARY WORKS

P02.1	17/12/19	Issued for Construction	MP	HH	
C01	18/12/19	Issued for Construction	MP	HH	HS
P03.1	11/03/20	Issued for Construction	JE	HH	HS
C02	13/03/20	Issued for Construction	JE	HH	HS
Rev	Date	Description of Revisions	Drawn	Chkd	Appr
Status					Subsability
Accepted for Stage 6					A6

**Network Rail**

Authorised	I.CARTER	Signed	IC	Date	13/03/20
------------	----------	--------	----	------	----------

Contractor(s)  
**Morgan Sindall Plc**

Location/Level	No Specific Location				
Type	CAD Drawing	Sub-type	General Arrangement		
Role	Civil Engineer	Discipline	Civils		
Volume/System	No Specific Volume or System				
Phasing	To be Removed	Grip Stage	6		
Project	Kings Cross Remodelling				
Contract No.					
Contract Title					
Drawing Title	King's Cross Station Platform Extension and Modification Existing Platform 2/3 Demolition Plan - Surface 2 of 2				
Designed		Signed		Date	
Drawn	J.ELLIS	Signed	JE	Date	11/03/20
Checked	H.HO	Signed	HH	Date	11/03/20
Approved	H.SIMPSON	Signed	HS	Date	11/03/20
Scale(s)	1:100	ELT & M&E	ECM1	to	0m 353yds
Alternative Reference	L118008	Sheet	2 of 2		
Drawing Number	152319-MOS-DRG-ECV-070016	Revision	C02		

Sheet Size A1+3 594 x 1471