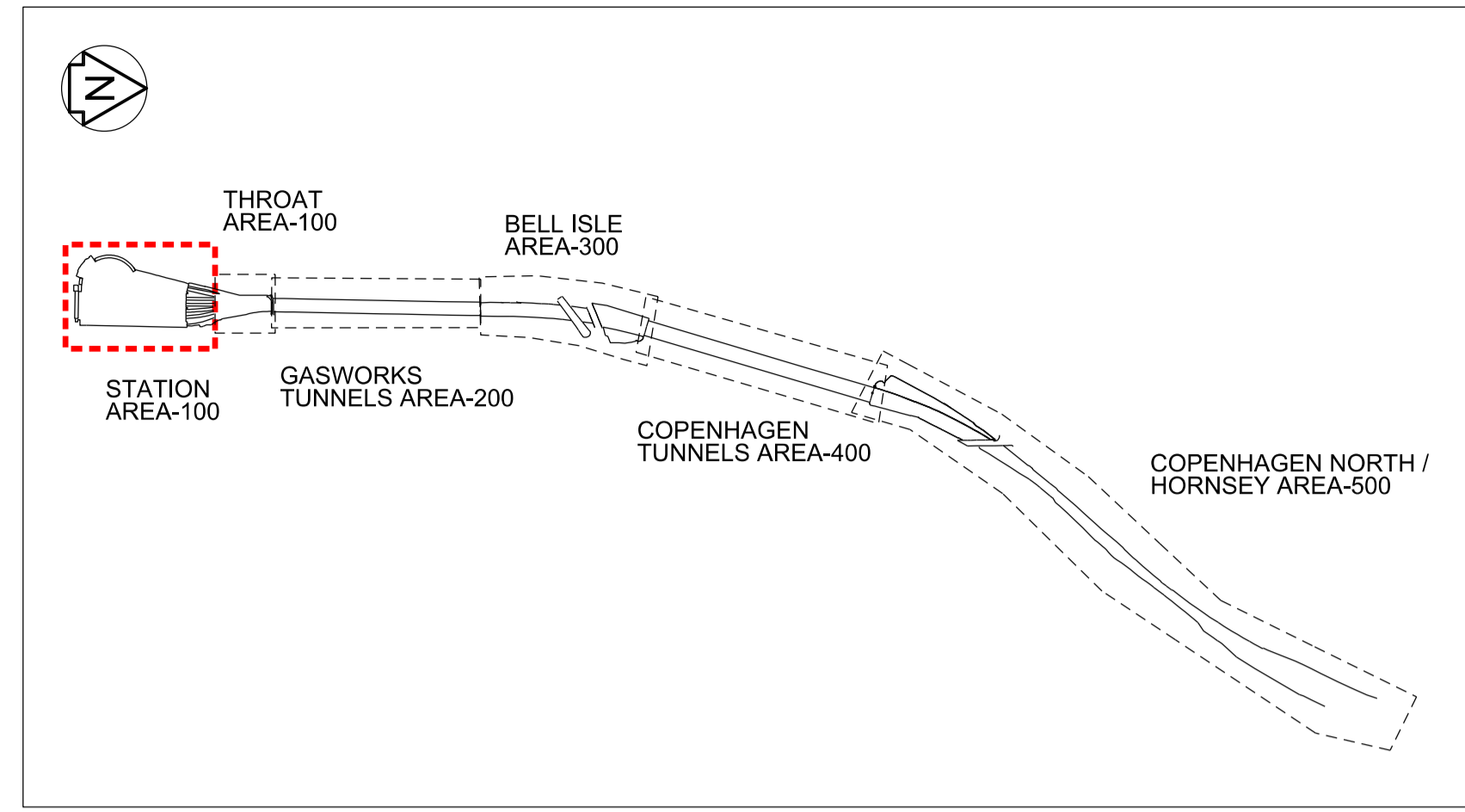


Safety, Health and Environmental Information	
Notes below are additional to hazards/risks normally associated with this type of work. Numbers correspond to Risk Register references - see General Notes drawing for details.	
Construction	
▲ C01	Asbestos within existing platform structure
▲ C04	Services on platform wall and buried within platform
▲ C07	Damage/stability of existing foundation
● C07	Damage/stability of existing foundation
Operations, Maintenance,	
▲ OM09	Existing refuge areas insufficient and access difficult
Dismantling / Demolition (Future)	
No risk identified	
Refer to general notes and the Principal Contractor for more information about the risks associated with this work.	

These notes are based on the use of experienced and competent contractors carrying out the work using an approved safe method of working

**Key to Health and Safety Symbols**

- Indicates a residual risk requiring a compulsory action
- Indicates a residual risk for information
- ⊘ Indicates a residual risk requiring a prohibitive action
- ▲ Indicates a residual risk as a warning



- Legend/Notes
- DO NOT SCALE FROM DRAWING, USE FIGURED DIMENSIONS ONLY.
  - ALL DIMENSIONS ARE IN MILLIMETRES AND LEVELS ARE IN METRES ACD.
  - DRAWING TO READ IN CONJUNCTION WITH:
    - 152319-MOS-DRG-ECV-070015 - PLATFORMS 2/3 DEMOLITION PLAN SURFACE
    - 152319-MOS-DRG-ECV-070016 - PLATFORMS 2/3 DEMOLITION PLAN SURFACE
    - 152319-MOS-DRG-ECV-070035 - PLATFORMS 2/3 DEMOLITION SECTIONS
    - 152319-MOS-DRG-ECV-070036 - PLATFORMS 2/3 DEMOLITION SECTIONS
    - 152319-MOS-DRG-ECV-070102 - PLATFORMS 2/3 PROPOSED SECTIONS
    - 152319-MOS-DRG-ECV-070235 - PLATFORMS 2/3 PROPOSED SECTIONS
    - 152319-MOS-DRG-ECV-070236 - PLATFORMS 2/3 PROPOSED SECTIONS
  - PROPOSED (DESIGN) CHAINAGES SHOWN ON DRAWING
  - CONDITION OF EXISTING WALL TO BE ASSESSED FOR RE-USE
  - EXCAVATED FILL CAN BE RE-USED SUBJECT TO CHEMICAL AND PHYSICAL TESTING IN ACCORDANCE WITH THE SPECIFICATION AND MATERIAL MANAGEMENT STRATEGY.
  - CONTRACTOR TO INVESTIGATE EXISTING SERVICES IDENTIFIED AND DECOMMISSION/ DIVERT WHERE NECESSARY.
  - THIS DESIGN HAS BEEN BASED UPON LDO 'KX MASTER FEDERATED MODEL TRACKER' AS EXPORTED ON 10/12/19

- KEY :**
- EXISTING PLATFORM
  - EXISTING FILL TO BE REMOVED DOWN TO FORMATION LEVEL FOR PROPOSED WORKS
- COLOUR CONVENTIONS**
- BLACK - EXISTING OR UNCHANGED
  - BLUE - MODIFIED OR TO BE MOVED
  - GREEN - REDUNDANT OR TO BE REMOVED
  - RED - PROPOSED OR ADDITIONAL
  - PURPLE - WORKS BY OTHERS
  - ORANGE - FUTURE WORKS
  - CYAN - TEMPORARY WORKS

Rev	Date	Description of Revisions	Drawn	Chkd	Appr	Status
P01.8	11/11/19	Issued For F003				JE CS ---
B01	12/11/19	Issued For F003				JE CS HS
P02.1	17/12/19	Issued for Construction	MP	HM	HS	MP HM HS
C01	18/12/19	Issued for Construction	MP	HM	HS	MP HM HS

Accepted for Stage 6

Authorised	I. Carter	Signed	IC	Date	18/12/19
------------	-----------	--------	----	------	----------

Contractor(s)  
**Morgan Sindall Plc**

Location/Level	No Specific Location	Subtype	General Arrangement
Type	CAD Drawing	Discipline	Civils
Role	Civil Engineer	Volume/System	No Specific Volume or System
Phasing	To be Removed	Grip Stage	6

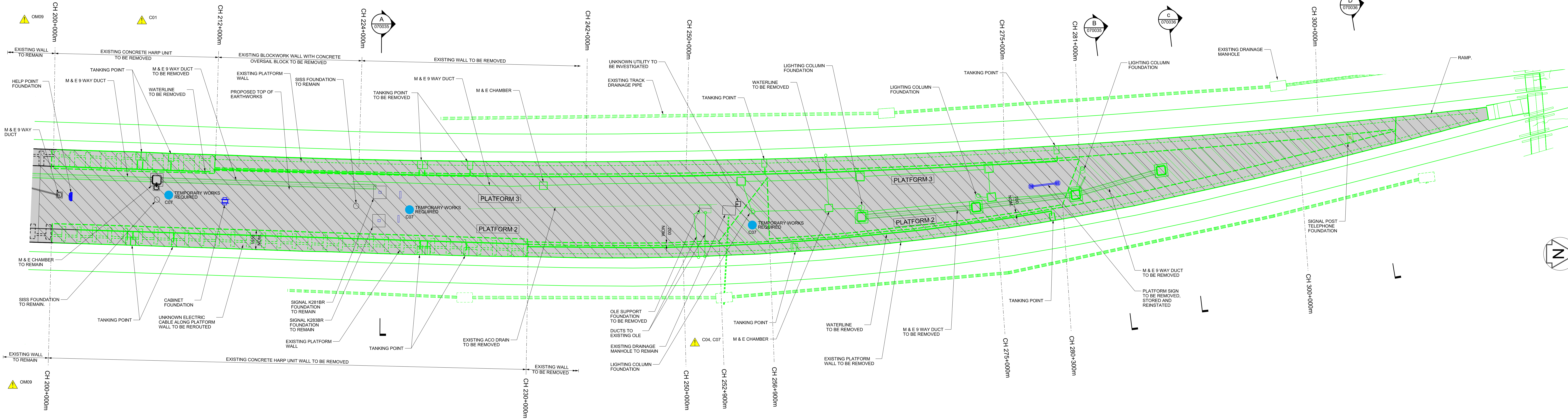
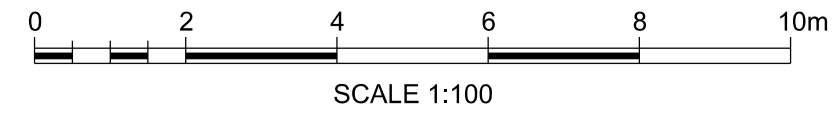
Project  
**Kings Cross Remodelling**

Contract No.  
Contract Title

Drawing Title  
**King's Cross Station Platform Extension and Modification Existing Platform 2/3 Demolition Plan - Subsurface**

Designed	Signed	Date
Drawn M. PAGE	Signed MP	Date 17/12/19
Checked H. HO	Signed HH	Date 17/12/19
Approved H. SIMPSON	Signed HS	Date 17/12/19

APPROVED FOR CONSTRUCTION  
SIGNED: IAN CARTER  
NAME: IAN CARTER  
DATE: 18/12/19  
CONTRACTIVE ENGINEERING MANAGER



EXISTING PLATFORMS 2 & 3 GENERAL ARRANGEMENT AND DEMOLITION PLAN - SUBSURFACE  
SCALE 1:100