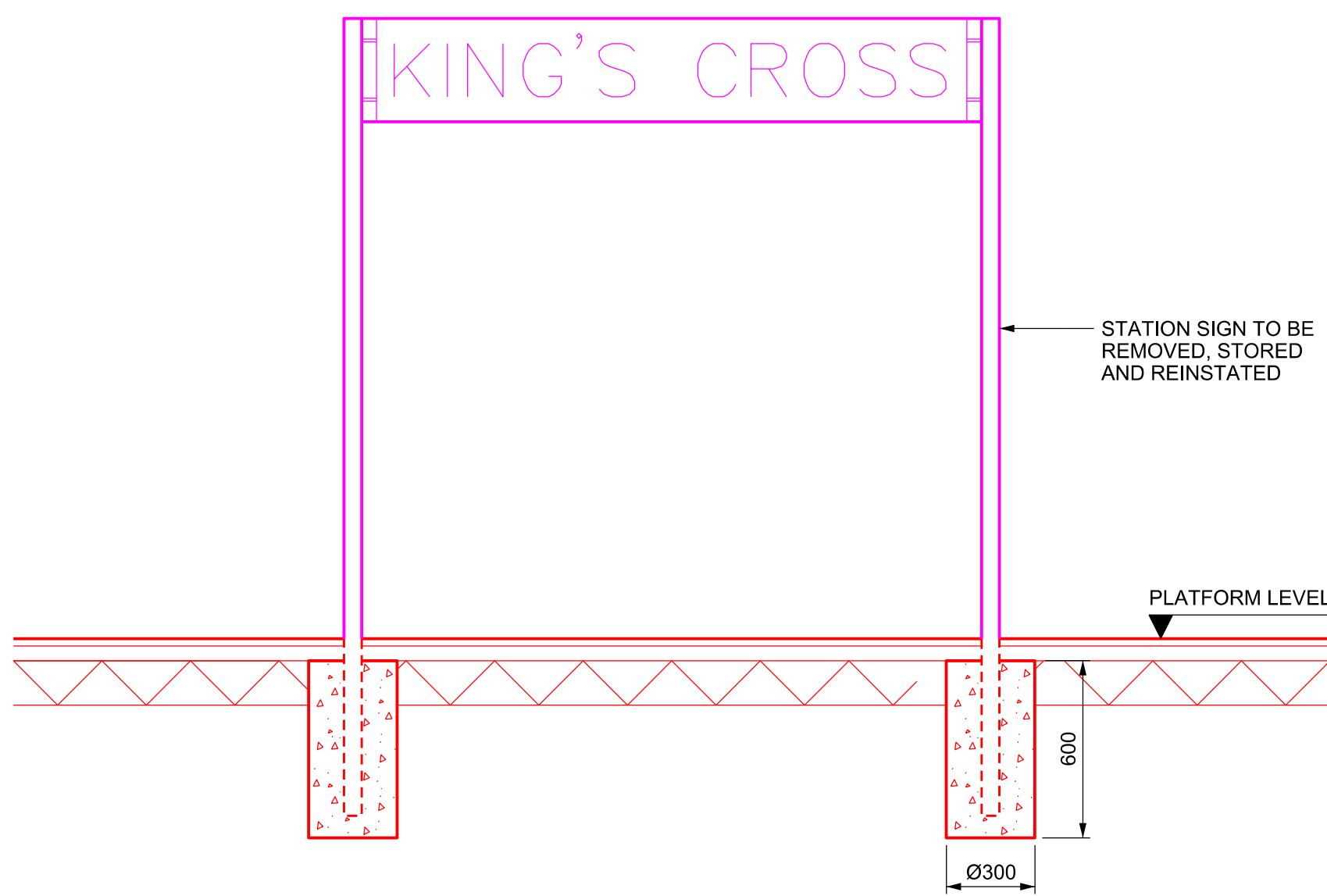
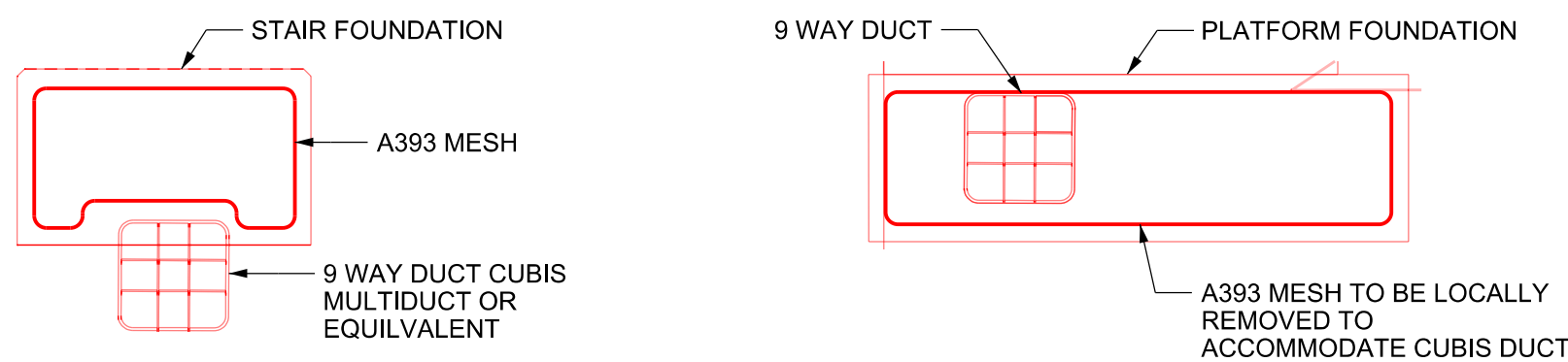


TYPICAL PLATFORM - END SIDE ELEVATION
SCALE 1:25



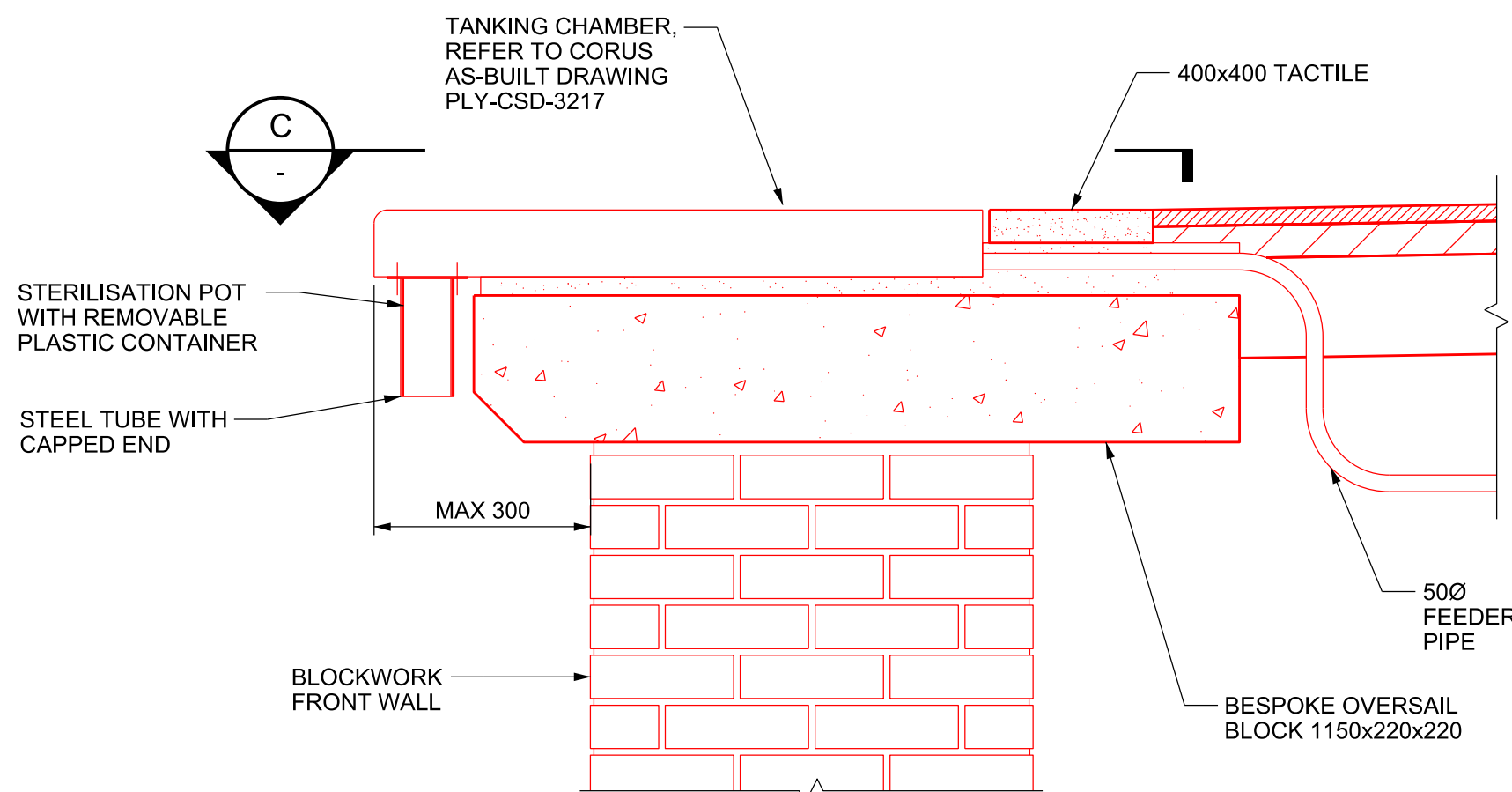
PLATFORM SIGN SECTION
SCALE 1:20

These notes are based on the use of experienced and competent contractors carrying out the work using an approved safe method of working

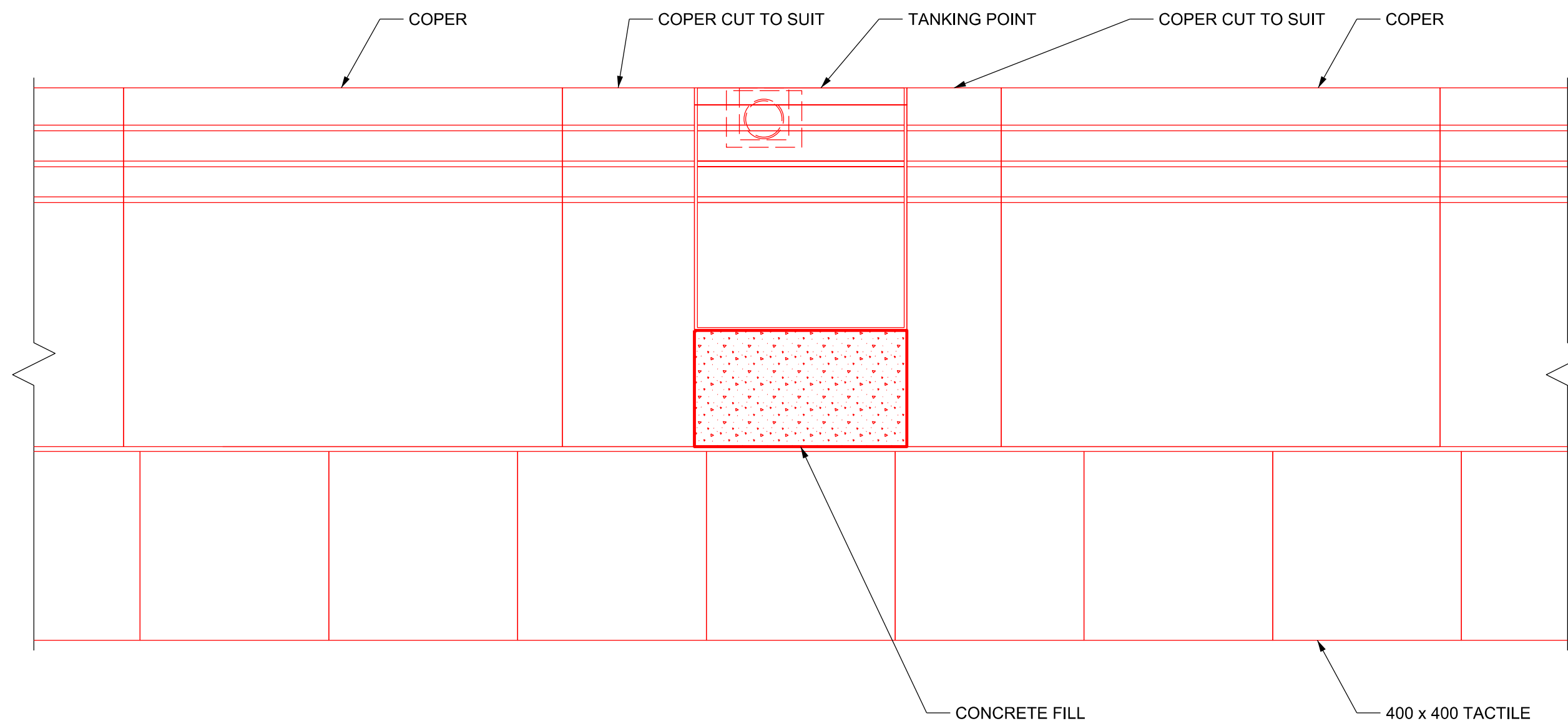
Key to Health and Safety Symbols

- Indicates a residual risk requiring a compulsory action
- Indicates a residual risk for information
- Indicates a residual risk requiring a prohibitive action
- Indicates a residual risk as a warning

Safety, Health and Environmental Information	
Notes below are additional to hazards/risks normally associated with this type of work. Numbers correspond to Risk Register references - see General Notes drawing for details.	
Construction No risk identified	
Operations, Maintenance	
OM08	Proposed platform cross falls are non-compliant
OM15	Metal structure not bonded
Dismantling / Demolition (Future) No risk identified	
Refer to general notes and the Principal Contractor for more information about the risks associated with this work.	



TANKING POINT DETAIL
SCALE 1:10



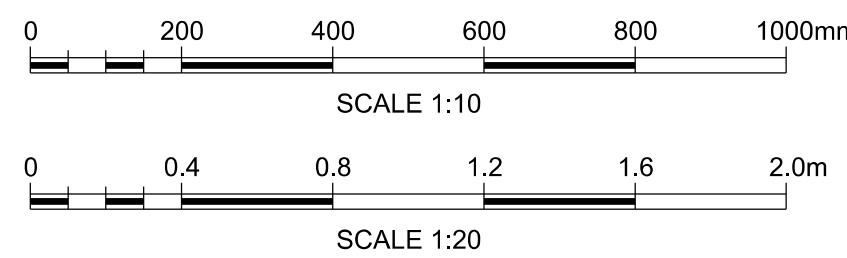
PLAN C - C
TYPICAL TANKING POINT PLAN
SCALE 1:10

Legend/Notes

- ALL DIMENSIONS IN MILLIMETRES UNLESS STATED OTHERWISE.
- DETAILS OF SIGNAGE POSTS AS PER GWR SIGN GUIDE.
- ALL POSTS SHOWN WITH PLANTED CONCRETE FOUNDATIONS.
- FOR BLANKING BOARD LOCATIONS AS PER NR DOCUMENT "PROVISION OF BLANKING PLATES AT KING'S CROSS STATION" (REF: NR/NRDD/153198/BLANKING PLATES) DATED NOVEMBER 2018
- REFER TO SIGNAL SIGHTING FORMS (ALL DATED 08/06/2018) :
0145M-B0-YA1001
0145M-B0-YA1004
0145M-B0-YA1005
0145M-B0-YA1008
0145M-B0-YA1009
- ALL STEEL HOT DIP GALVANISED TO MINIMUM THICKNESS OF 100 MICRONS IN ACCORDANCE WITH BS EN 10025-2, UNLESS NOTED OTHERWISE.
- SIGN FIXINGS TO BE STAINLESS STEEL CHANNEL CLIPS TO PROVIDE LATERAL ALIGNMENT IN SIGN IF REQUIRED.
- DRAWING TO BE READ IN CONJUNCTION WITH
152319-MOS-DRG-ECV-070101,
152319-MOS-DRG-ECV-070103,
152319-MOS-DRG-ECV-070105,
152319-MOS-DRG-ECV-070106
- ALL METAL STRUCTURES TO BE BONDED. DETAILS PROVIDED BY BONDING DESIGNER.
- FOUNDATION CONCRETE TO BE GRADE ST4 REINFORCEMENT MESH TO BE A393 WITH NOMINAL 50mm COVER.
- THIS DESIGN HAS BEEN BASED UPON LDO 'KX MASTER FEDERATED MODEL TRACKER' AS EXPORTED ON 10/12/19

KEY :

COLOUR CONVENTIONS
BLACK - EXISTING OR UNCHANGED
BLUE - MODIFIED OR TO BE MOVED
GREEN - REDUNDANT OR TO BE REMOVED
RED - PROPOSED OR ADDITIONAL
PURPLE - WORKS BY OTHERS
ORANGE - FUTURE WORKS
CYAN - TEMPORARY WORKS



P01.3	11/11/19	Issued For F003	J.E	CS	---
B01	12/11/19	Issued For F003	J.E	CS	HS
P02.1	17/12/19	Issued for Construction	J.E	HH	---
C01	18/12/19	Issued for Construction	J.E	HH	HS
Rev	Date	Description of Revisions	Drawn	Chkd	Appr
Status			Suitability		
Accepted for Stage 6			A6		



Authorised	I.Carter	Signed	IC	Date	18/12/19
------------	----------	--------	----	------	----------

Contractor(s)
Morgan Sindall Plc

Location/Level No Specific Location	
Type CAD Drawing	Sub-type General Arrangement
Role Civil Engineer	Discipline Civils
Volume/System	
Phasing Proposed	Grip Stage 6
Project	

Kings Cross Remodelling

Contract No.

Contract Title

Drawing Title
**King's Cross Station
Platform Extension and Modification
Proposed Details
Sheet 2**

Designed		Signed		Date	
Drawn	J.ELLIS	Signed	JE	Date	17/12/19
Checked	H.HO	Signed	HH	Date	17/12/19
Approved	H.SIMPSON	Signed	HS	Date	17/12/19
Scale(s) As Shown		ELR & Mileage ECM1 to 0m 353yds			

Drawing Number 152319-MOS-DRG-ECV-070402	Revision C01
---	-----------------

