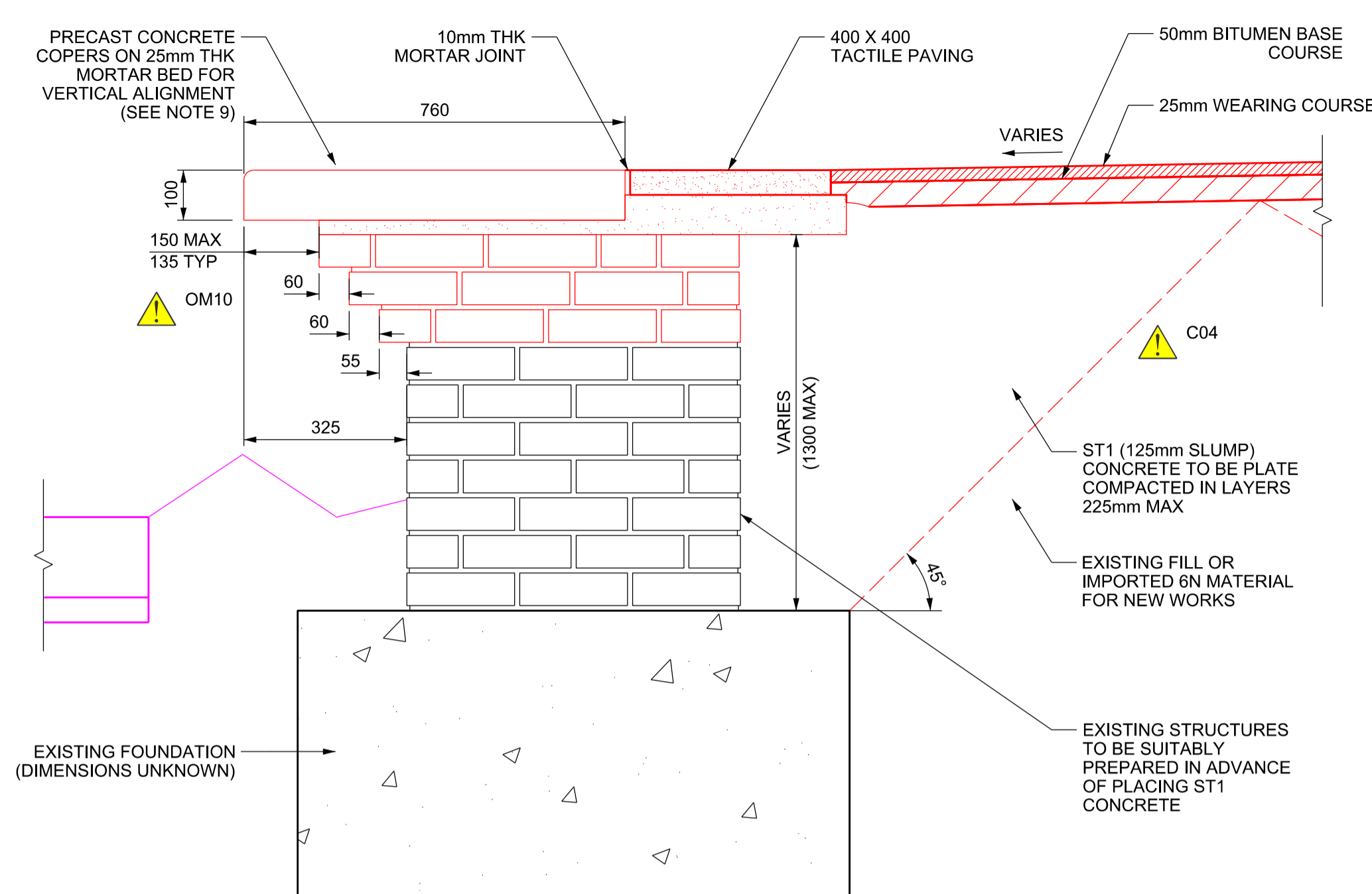
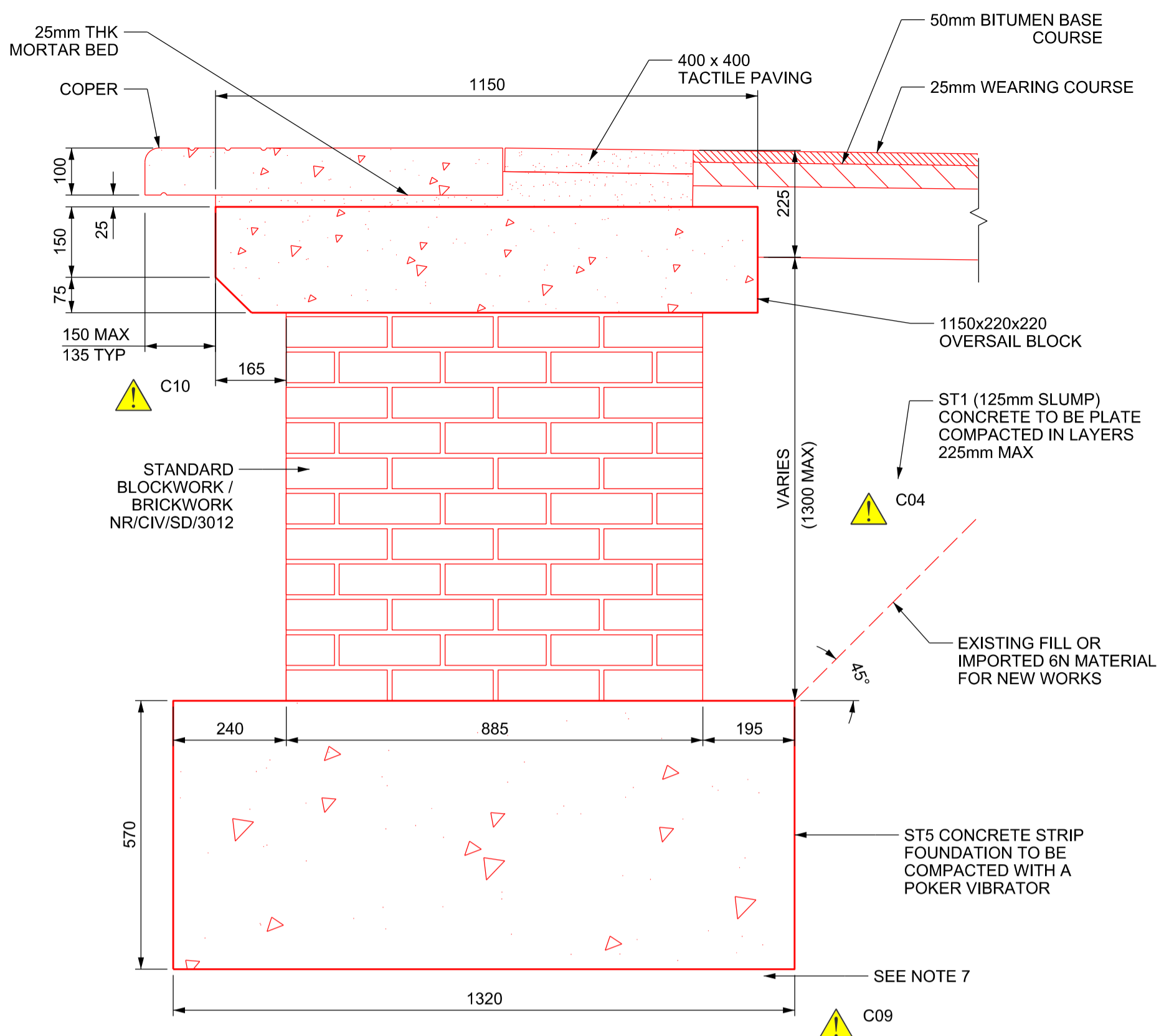


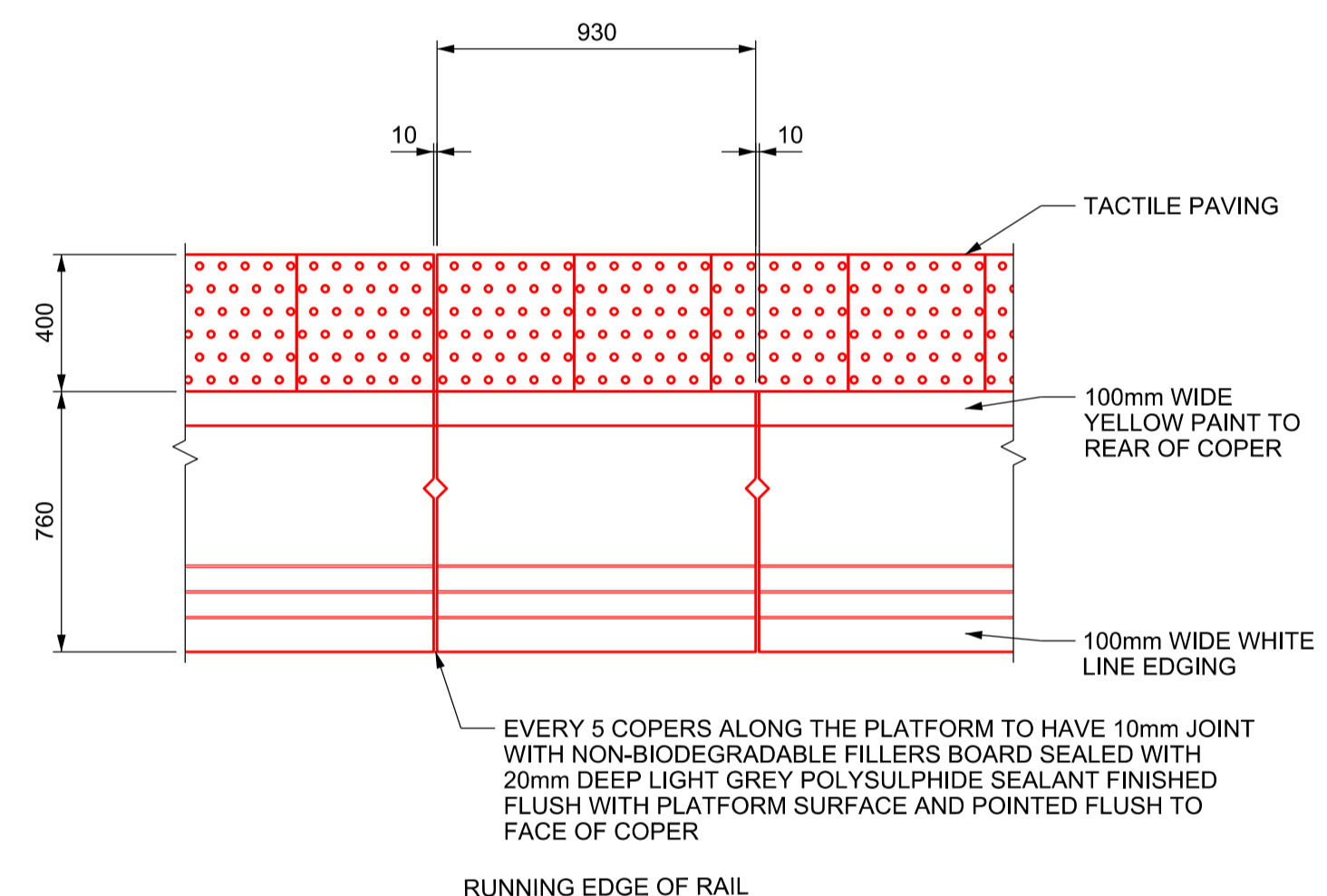
Drawing Number
152319-MOS-DRG-ECV-070401



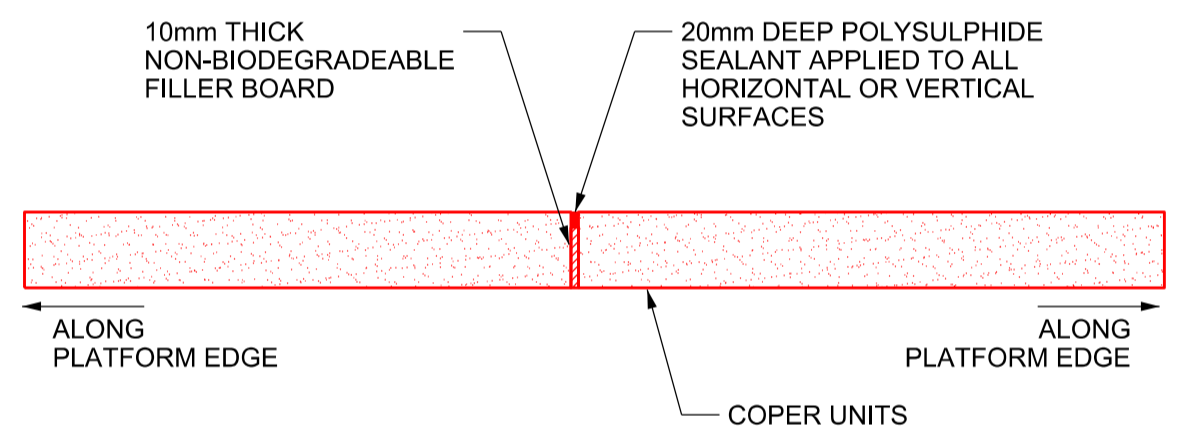
TYPE 1 - MODIFIED BRICKWORK FRONT WALL
SCALE 1:10



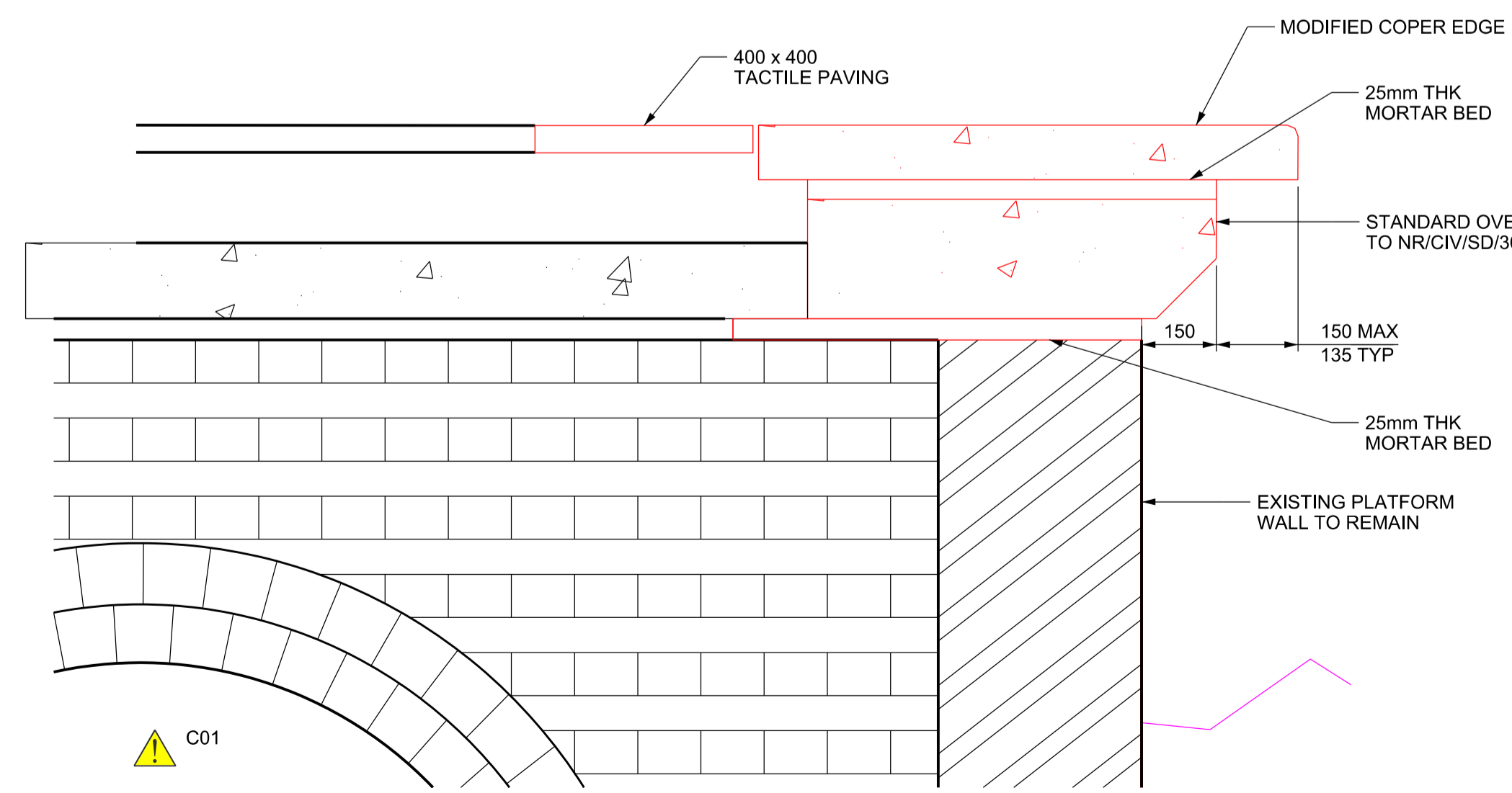
TYPE 2 - STANDARD BLOCKWORK FRONT WALL
SCALE 1:10



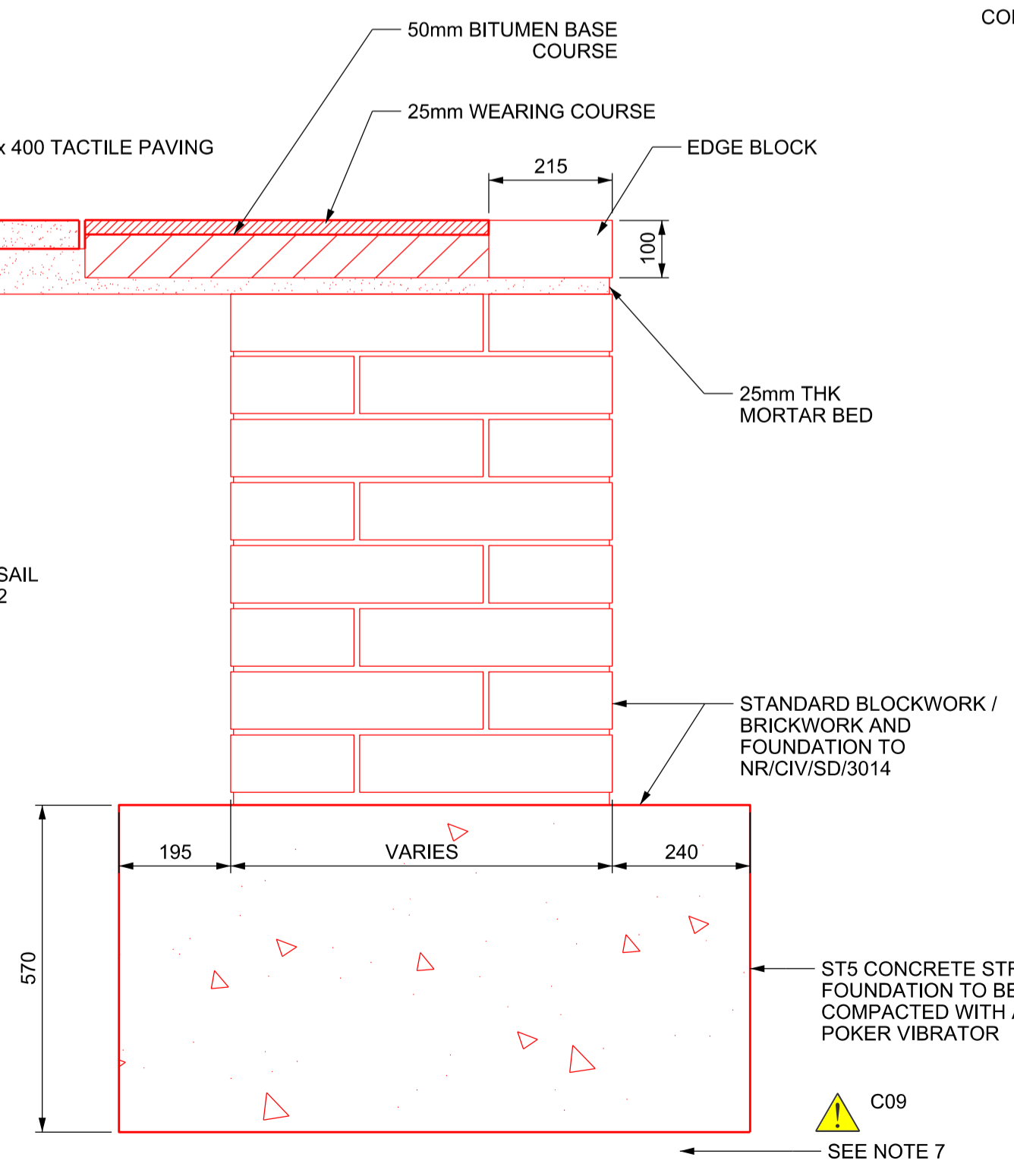
PLATFORM COPER PLAN



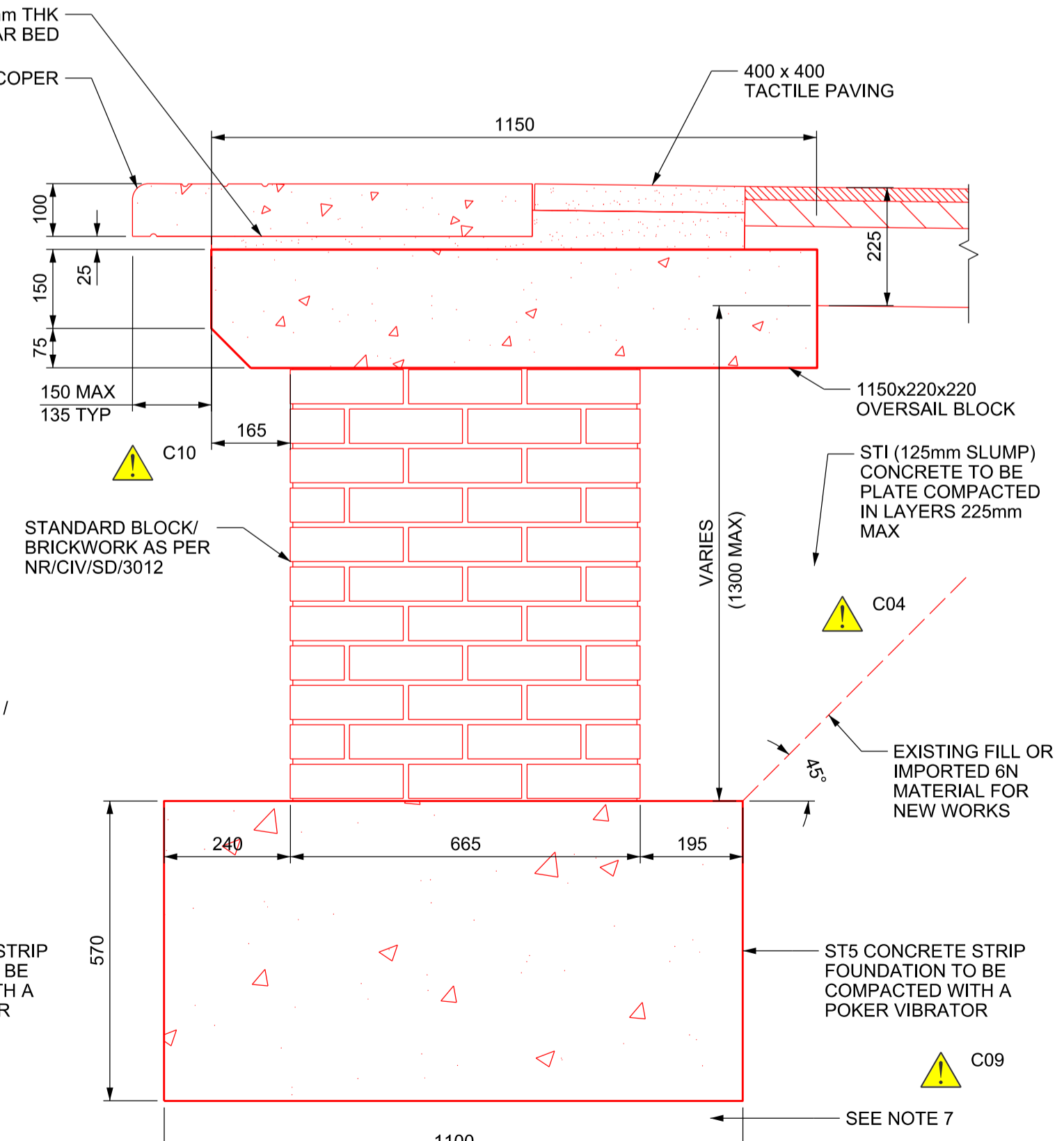
COPER UNIT EXPANSION JOINT DETAIL
SCALE 1:10



SECTION OF EXISTING PLATFORM WALL WITH MODIFIED SLAB & COPER EDGE
SCALE 1:10



TYPE 3 - SLAB WALL
SCALE 1:10



TYPE 4 - PLATFORM 10 FRONT WALL
SCALE 1:10

Safety, Health and Environmental Information	
Notes below are additional to hazards/risks normally associated with this type of work. Numbers correspond to Risk Register references - see General Notes drawing for details.	
Construction	
⚠ C01	Asbestos within existing platform structure
⚠ C04	Risk of striking existing services
⚠ C09	Unsuitable ground conditions leading to failure of new foundations
⚠ C10	Manual handling limitations
Operations, Maintenance	
⚠ OM10	Refuge minimum site requirements
Dismantling / Demolition (Future)	
No risk identified	
Refer to general notes and the Principal Contractor for more information about the risks associated with this work.	

These notes are based on the use of experienced and competent contractors carrying out the work using an approved safe method of working

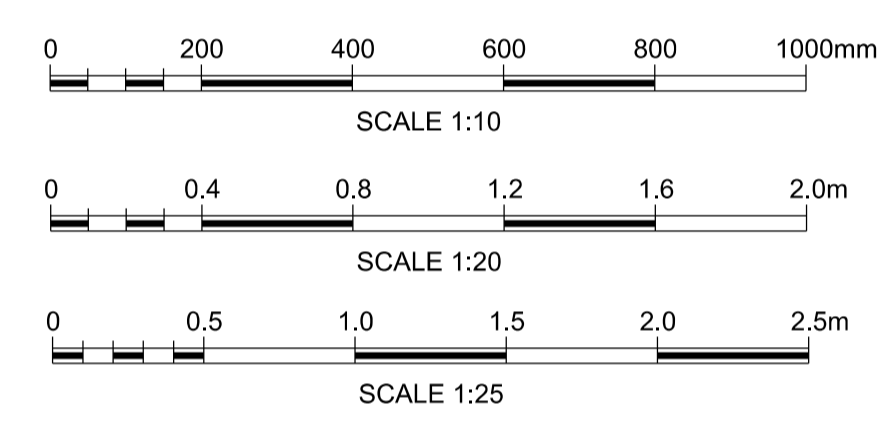
Key to Health and Safety Symbols	
⚠	Indicates a residual risk requiring a compulsory action
ℹ	Indicates a residual risk for information
🚫	Indicates a residual risk requiring a prohibitive action
⚠	Indicates a residual risk as a warning

WEIGHT OF OVERSAIL BLOCK = 135kg

APPROVED FOR CONSTRUCTION
SIGNED: *[Signature]*
NAME: IAN CARTER
DATE: 18/12/2019
CONTRACTOR'S ENGINEERING MANAGER

- Legend/Notes
- ALL DIMENSIONS IN MILLIMETRES UNLESS STATED OTHERWISE.
 - REFER TO NR/CIV/SD/3012 FOR FRONT WALL BUILD UP.
 - REFER TO NR/CIV/SD/3018 FOR FENCING, FENCING COLUMN FIXING TBC.
 - THIS DRAWING IS TO BE READ IN CONJUNCTION WITH :
152319-MOS-DRG-ECV-070230
152319-MOS-DRG-ECV-070251
152319-MOS-DRG-ECV-070101
152319-MOS-DRG-ECV-070102
152319-MOS-DRG-ECV-070103
152319-MOS-DRG-ECV-070104
152319-MOS-DRG-ECV-070105
152319-MOS-DRG-ECV-070106
152319-MOS-DRG-EDR-107101
152319-MOS-DRG-ETR-107101
152319-MOS-REP-ECV-070024
 - THIS DESIGN HAS BEEN BASED UPON LDO 'KX MASTER FEDERATED MODEL TRACKER' AS EXPORTED ON 10/12/19
 - ALL METAL STRUCTURES TO BE BONDED. DETAILS PROVIDED BY BONDING DESIGNER.
 - COMPACTED FILL MATERIAL AS PER NETWORK RAIL STANDARD DETAIL NR/CIV/SD/3012 OR AGREED RECOVERED AND REMEDIATED ALTERNATIVE FILL.
 - WHERE EXISTING FRONT WALL IS TO REMAIN, REFER TO ASSESSMENT REPORT 152319-MOS-REP-ECV-000024
 - EXISTING COPER SLABS TO BE RE-USED IF CONSIDERED TO BE IN GOOD CONDITION. A SLAB IS TO BE CONSIDERED "GOOD CONDITION" IF NO VISIBLE DEFECTS ARE PRESENT OR AS CONSIDERED AT THE DISCRETION OF THE CONTRACTOR. ALL COPER SLABS REPLACED MUST BE THE SAME SIZE AS THE ORIGINAL.

KEY :
COLOUR CONVENTIONS
BLACK - EXISTING OR UNCHANGED
BLUE - MODIFIED OR TO BE MOVED
GREEN - REDUNDANT OR TO BE REMOVED
RED - PROPOSED OR ADDITIONAL
PURPLE - WORKS BY OTHERS
ORANGE - FUTURE WORKS
CYAN - TEMPORARY WORKS



Rev	Date	Description of Revisions	Drawn	Chkd	Appr	Suitability	
P01.4	11/11/19	Issued For F003			JE	CS	---
B01	12/11/19	Issued For F003			JE	CS	HS
P02.1	17/12/19	Issued for Construction			JE	HH	---
C01	18/12/19	Issued for Construction			JE	HH	HS

Accepted for Stage 6 A6



Authorised: I. Carter Signed: IC Date: 18/12/19

Contractor(s): Morgan Sindall Plc

Location/Level	No Specific Location
Type	CAD Drawing
Role	Civil Engineer
Volume/System	
Phasing	Proposed
Project	Grip Stage 6

Project: Kings Cross Remodelling

Contract No.:

Contract Title:

Drawing Title: King's Cross Station Platform Extension and Modification Proposed Details Sheet 1

Drawn	Signed	Date
J.ELLIS	JE	20/08/19
H.HO	HH	17/12/19
H.SIMPSON	HS	17/12/19

Scale(s): As Shown ELR & Mileage ECM1 to 0m 353yds

Alternative Reference: Sheet 1 of 2
Drawing Number: 152319-MOS-DRG-ECV-070401
Revision: C01