

These notes are based on the use of experienced and competent contractors carrying out the work using an approved safe method of working

Key to Health and Safety Symbols

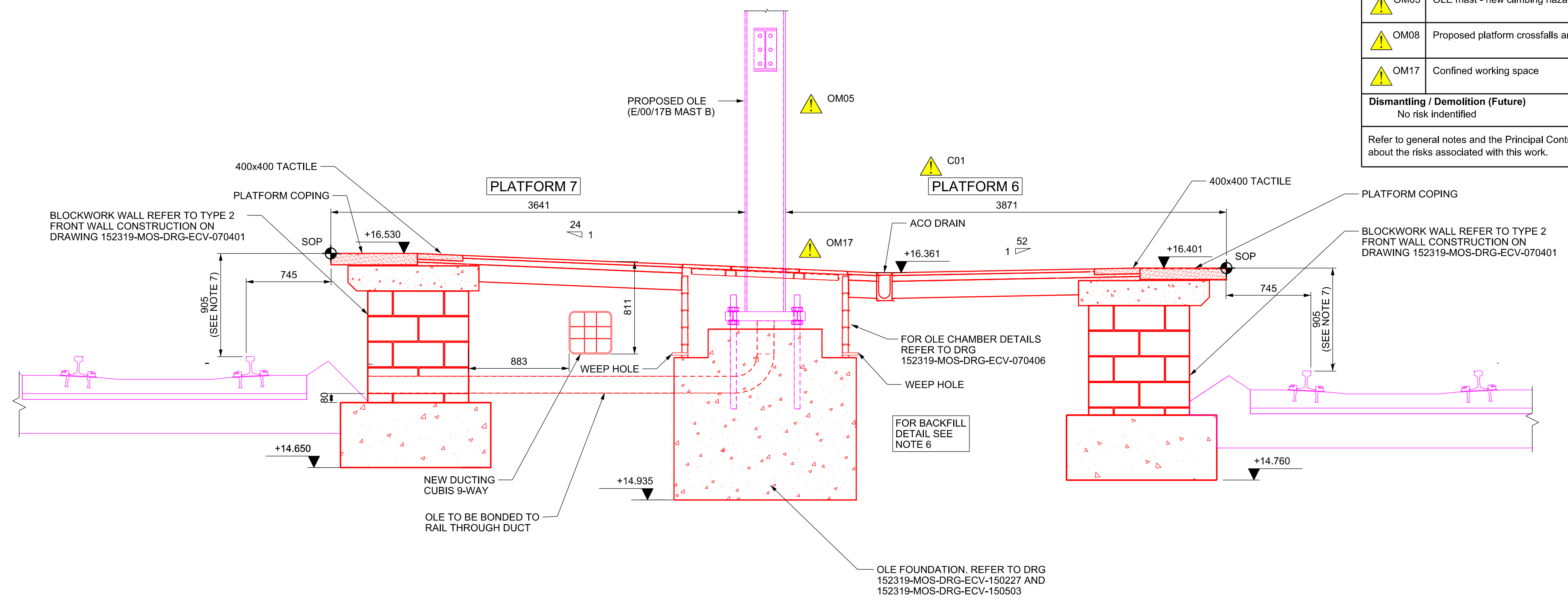
- Indicates a residual risk requiring a compulsory action
- i Indicates a residual risk for information
- ⊘ Indicates a residual risk requiring a prohibitive action
- ⚠ Indicates a residual risk as a warning

Safety, Health and Environmental Information	
Notes below are additional to hazards/risks normally associated with this type of work. Numbers correspond to Risk Register references - see General Notes drawing for details.	
Construction	
⚠ C01	Asbestos within existing platform structure
⚠ C04	Services on platform wall and buried within platform
Operations, Maintenance	
⚠ OM05	OLE mast - new climbing hazard
⚠ OM08	Proposed platform crossfalls are non-compliant
⚠ OM17	Confined working space
Dismantling / Demolition (Future)	
No risk identified	
Refer to general notes and the Principal Contractor for more information about the risks associated with this work.	

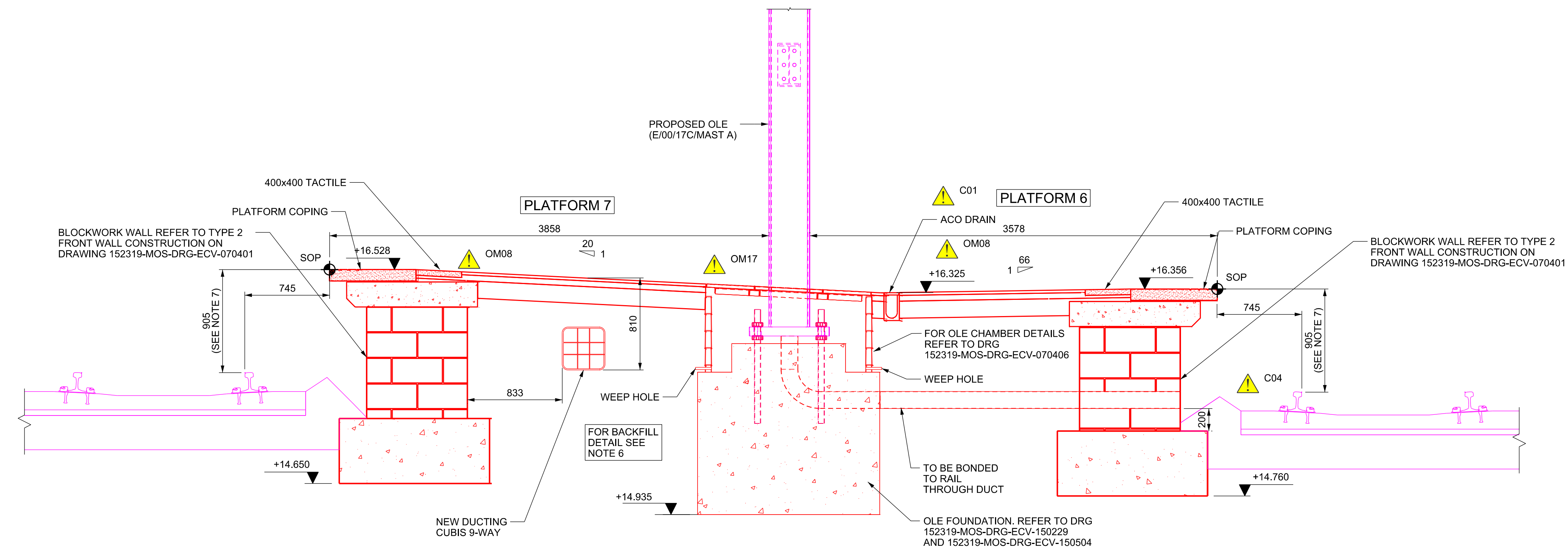
- Legend/Notes**
- DO NOT SCALE FROM DRAWING, USE FIGURED DIMENSIONS ONLY.
 - ALL DIMENSIONS ARE IN MILLIMETRES AND LEVELS ARE IN METRES AOD.
 - DRAWING TO READ IN CONJUNCTION WITH:
 - 152319-MOS-DRG-ECV-070020 - PLATFORMS 6/7 DEMOLITION PLAN SUBSURFACE
 - 152319-MOS-DRG-ECV-070021 - PLATFORMS 6/7 DEMOLITION PLAN SURFACE 1 OF 2
 - 152319-MOS-DRG-ECV-070022 - PLATFORMS 6/7 DEMOLITION PLAN SURFACE 2 OF 2
 - 152319-MOS-DRG-ECV-070045 - PLATFORMS 6/7 DEMOLITION SECTIONS 1 OF 3
 - 152319-MOS-DRG-ECV-070046 - PLATFORMS 6/7 DEMOLITION SECTIONS 2 OF 3
 - 152319-MOS-DRG-ECV-070047 - PLATFORMS 6/7 DEMOLITION SECTIONS 3 OF 3
 - 152319-MOS-DRG-ECV-070104 - PLATFORMS 6/7 PROPOSED PLATFORM
 - 152319-MOS-DRG-ECV-070245 - PLATFORMS 6/7 PROPOSED SECTIONS 1 OF 3
 - 152319-MOS-DRG-ECV-070247 - PLATFORMS 6/7 PROPOSED SECTIONS 3 OF 3
 - 152319-ITD-DRG-ETR-107101 - PACKAGE 7 - HORIZONTAL ALIGNMENT - PLATFORMS 0 TO 10 - PERMANENT WAY - KINGS CROSS STATION / THROAT
 - THIS DESIGN HAS BEEN BASED UPON LDO 'KX Master Federated Model Tracker' AS EXPORTED ON 10/12/19.
 - ALL METAL STRUCTURES TO BE BONDED, DETAILS PROVIDED BY BONDING DESIGNER.
 - COMPACTED FILL MATERIAL AS PER NETWORK RAIL STANDARD DETAIL NR/CIV/SD/3012 OR AGREED RECOVERED AND REMEDIATED ALTERNATIVE FILL.
 - X AND Y VALUES INDICATIVE ONLY FOR SETTING OUT OF COPER LINE AND TRACK X AND Y VALUES REFER TO 152319-AYS-REP-ETR-000057

COLOUR CONVENTIONS

- BLACK - EXISTING OR UNCHANGED
- BLUE - MODIFIED OR TO BE MOVED
- GREEN - REDUNDANT OR TO BE REMOVED
- RED - PROPOSED OR ADDITIONAL
- PURPLE - WORKS BY OTHERS
- ORANGE - FUTURE WORKS
- CYAN - TEMPORARY WORKS

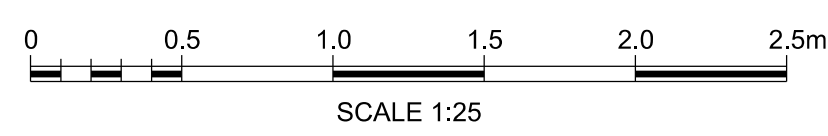


PROPOSED PLATFORMS 6 & 7 SECTION C-C
P5 CH +297.000
SCALE 1:25



PROPOSED PLATFORMS 6 & 7 SECTION D-D
P6 CH +303.000
SCALE 1:25

APPROVED FOR CONSTRUCTION
SIGNED: *[Signature]*
NAME: IAN CARTER
DATE: 18/12/2019
CONTRACTOR'S ENGINEERING MANAGER



P01.5	11/11/19	Issued For F003	JE	CS	---
B01	12/11/19	Issued For F003	JE	CS	HS
P02.1	17/12/19	Issued for Construction	JE	HH	---
C01	18/12/19	Issued for Construction	JE	HH	HS
Rev	Date	Description of Revisions	Drawn	Chkd	Appr

Status: **Accepted for Stage 6** Suitability: **A6**



Authorised: I. Carter Signed: IC Date: 18/12/19

Contractor(s): **Morgan Sindall Plc**

Location/Level: No Specific Location

Type: CAD Drawing Sub-type: Section

Role: Civil Engineer Discipline: Civils

Volume/System: Proposed Grip Stage: 6

Project: **Kings Cross Remodelling**

Contract No.:

Contract Title:

Drawing Title: **King's Cross Station Platform Extension and Modification Proposed Section C-C & D-D Platform 6/7**

Designed: _____ Signed: _____ Date: _____

Drawn: J.ELLIS Signed: JE Date: 17/12/19

Checked: H.HO Signed: HH Date: 17/12/19

Approved: H.SIMPSON Signed: HS Date: 17/12/19

Scale(s): 1:25 ELR & Mileage: ECM1 to 0m 353yds

Alternative Reference: _____ Sheet: 1 of 1

Drawing Number: 152319-MOS-DRG-ECV-070246 Revision: C01