

These notes are based on the use of experienced and competent contractors carrying out the work using an approved safe method of working

Key to Health and Safety Symbols

- Indicates a residual risk requiring a compulsory action
- Indicates a residual risk for information
- Indicates a residual risk requiring a prohibitive action
- Indicates a residual risk as a warning

Safety, Health and Environmental Information

Notes below are additional to hazards/risks normally associated with this type of work. Numbers correspond to Risk Register references - see General Notes drawing for details.

Construction

C04	Services on platform wall and buried within platform
C07	Damage/stability of existing foundations
C07	Damage/stability of existing foundations
C08	Existing platform in construction area

Operations, Maintenance,

OM06	Tanking points - slips, trips & falls
OM08	Proposed platform cross falls are non-compliant
OM15	Metal structure not bonded

Dismantling / Demolition (Future)  
No risk identified

Refer to general notes and the Principal Contractor for more information about the risks associated with this work.

Legend/Notes

- DO NOT SCALE FROM DRAWING, USE FIGURED DIMENSIONS ONLY.
- ALL DIMENSIONS ARE IN MILLIMETRES AND LEVELS ARE IN METRES AOD.
- DRAWING TO BE READ IN CONJUNCTION WITH:
  - 152319-MOS-DRG-ECV-070017 - PLATFORMS 4/5 DEMOLITION PLAN SUBSURFACE
  - 152319-MOS-DRG-ECV-070018 - PLATFORMS 4/5 DEMOLITION PLAN SURFACE
  - 152319-MOS-DRG-ECV-070019 - PLATFORMS 4/5 DEMOLITION PLAN SURFACE
  - 152319-MOS-DRG-ECV-070040 - PLATFORMS 4/5 DEMOLITION SECTIONS
  - 152319-MOS-DRG-ECV-070041 - PLATFORMS 4/5 DEMOLITION SECTIONS
  - 152319-MOS-DRG-ECV-070103 - PLATFORMS 4/5 PROPOSED PLATFORM
  - 152319-MOS-DRG-ECV-070241 - PLATFORMS 4/5 PROPOSED SECTIONS
  - 152319-ITD-DRG-ETR-107101 - PACKAGE 7 - HORIZONTAL ALIGNMENT - PLATFORMS 0 TO 10 - PERMANENT WAY - KINGS CROSS STATION / THROAT
- THIS DESIGN HAS BEEN BASED UPON LDO 'KX Master Federated Model Tracker' AS EXPORTED ON 10/12/19.
- ALL METAL STRUCTURES TO BE BONDED. DETAILS PROVIDED BY BONDING DESIGNER.
- COMPACTED FILL MATERIAL AS PER NETWORK RAIL STANDARD DETAIL NR/CIV/SD/3012 OR AGREED RECOVERED AND REMEDIATED ALTERNATIVE FILL.
- X AND Y VALUES INDICATIVE ONLY FOR SETTING OUT OF COPER LINE AND TRACK X AND Y VALUES REFER TO 152319-AYS-REP-ETR-000057

KEY :

COLOUR CONVENTIONS  
BLACK - EXISTING OR UNCHANGED  
BLUE - MODIFIED OR TO BE MOVED  
GREEN - REDUNDANT OR TO BE REMOVED  
RED - PROPOSED OR ADDITIONAL  
PURPLE - WORKS BY OTHERS  
ORANGE - FUTURE WORKS  
CYAN - TEMPORARY WORKS

P01.4	11/11/19	Issued For F003	JE	CS	---
B01	12/11/19	Issued For F003	JE	CS	HS
P02.1	17/12/19	Issued for Construction	JE	HH	---
C01	18/12/19	Issued for Construction	JE	HH	HS
Rev	Date	Description of Revisions	Drawn	Chkd	Appr

Status	Suitability
Accepted for Stage 6	A6



Authorised	I.Carter	Signed	IC	Date	18/12/19
------------	----------	--------	----	------	----------

Contractor(s)  
Morgan Sindall Plc

Location/Level		No Specific Location	
Type	CAD Drawing	Sub-type	Section
Role	Civil Engineer	Discipline	Civils
Volume/System			
Phasing	Proposed	Grip Stage	6

Project  
Kings Cross Remodelling

Contract No.

Contract Title

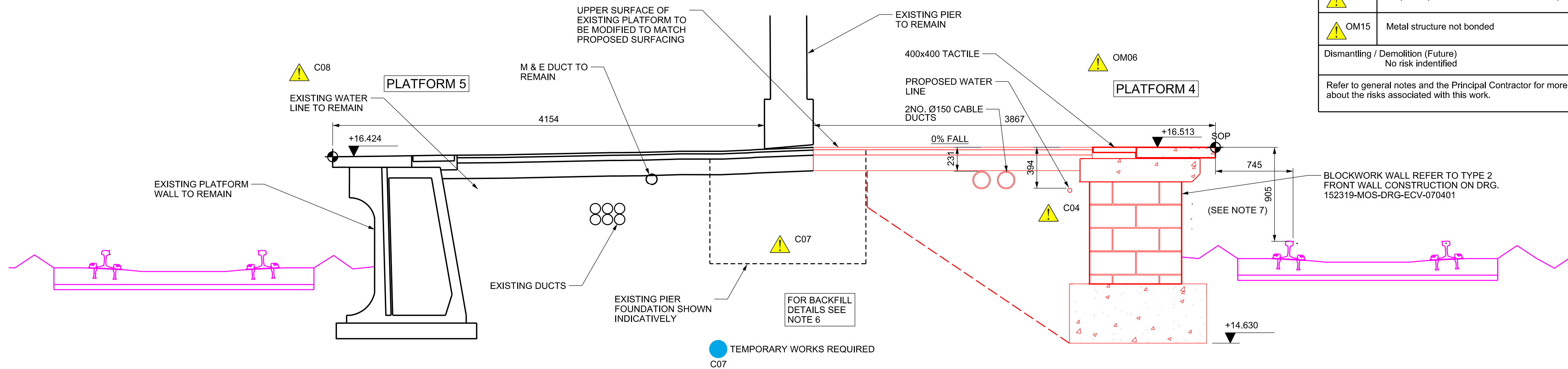
Drawing Title  
King's Cross Station  
Platform Extension and Modification  
Proposed Section A-A & B-B  
Platform 4/5

Designed		Signed	---	Date	
Drawn	J.ELLIS	Signed	JE	Date	17/12/19
Checked	H.HO	Signed	HH	Date	17/12/19
Approved	H.SIMPSON	Signed	HS	Date	17/12/19

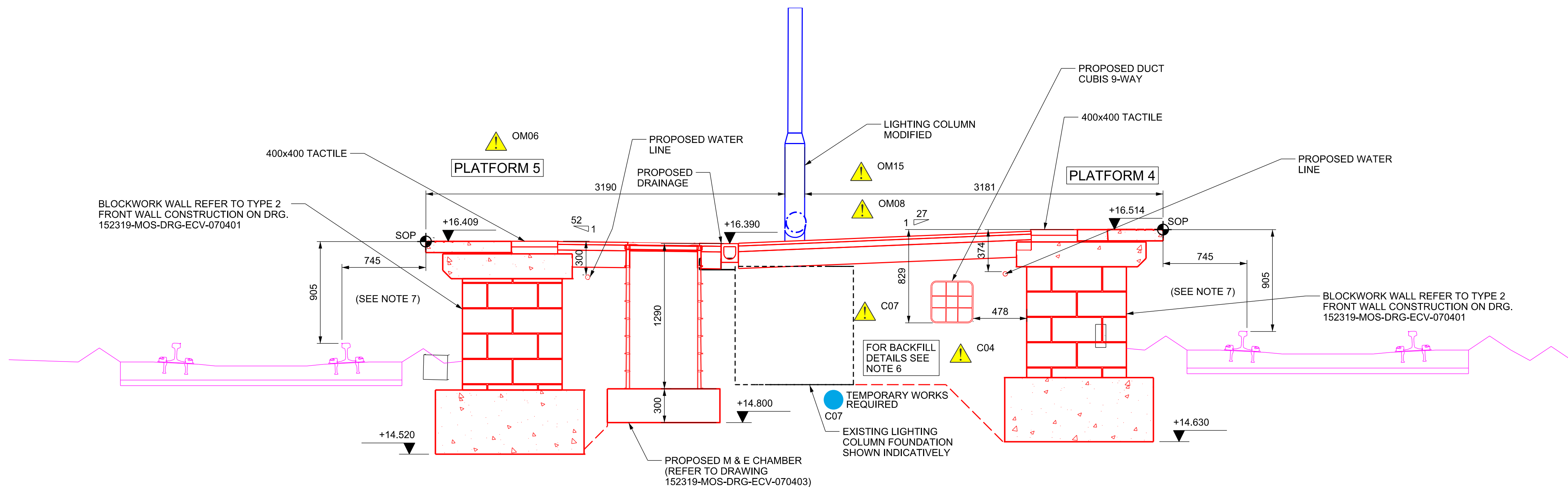
Scale(s)	1:25	ELR & Mileage	ECM1 to 0m 353yds
----------	------	---------------	-------------------

Alternative Reference		Sheet	1 of 1
-----------------------	--	-------	--------

Drawing Number	152319-MOS-DRG-ECV-070240	Revision	C01
----------------	---------------------------	----------	-----



PROPOSED PLATFORMS 4 & 5 SECTION A-A  
P5 CH +227.000



PROPOSED PLATFORMS 4 & 5 SECTION B-B  
P5 CH +272.000

