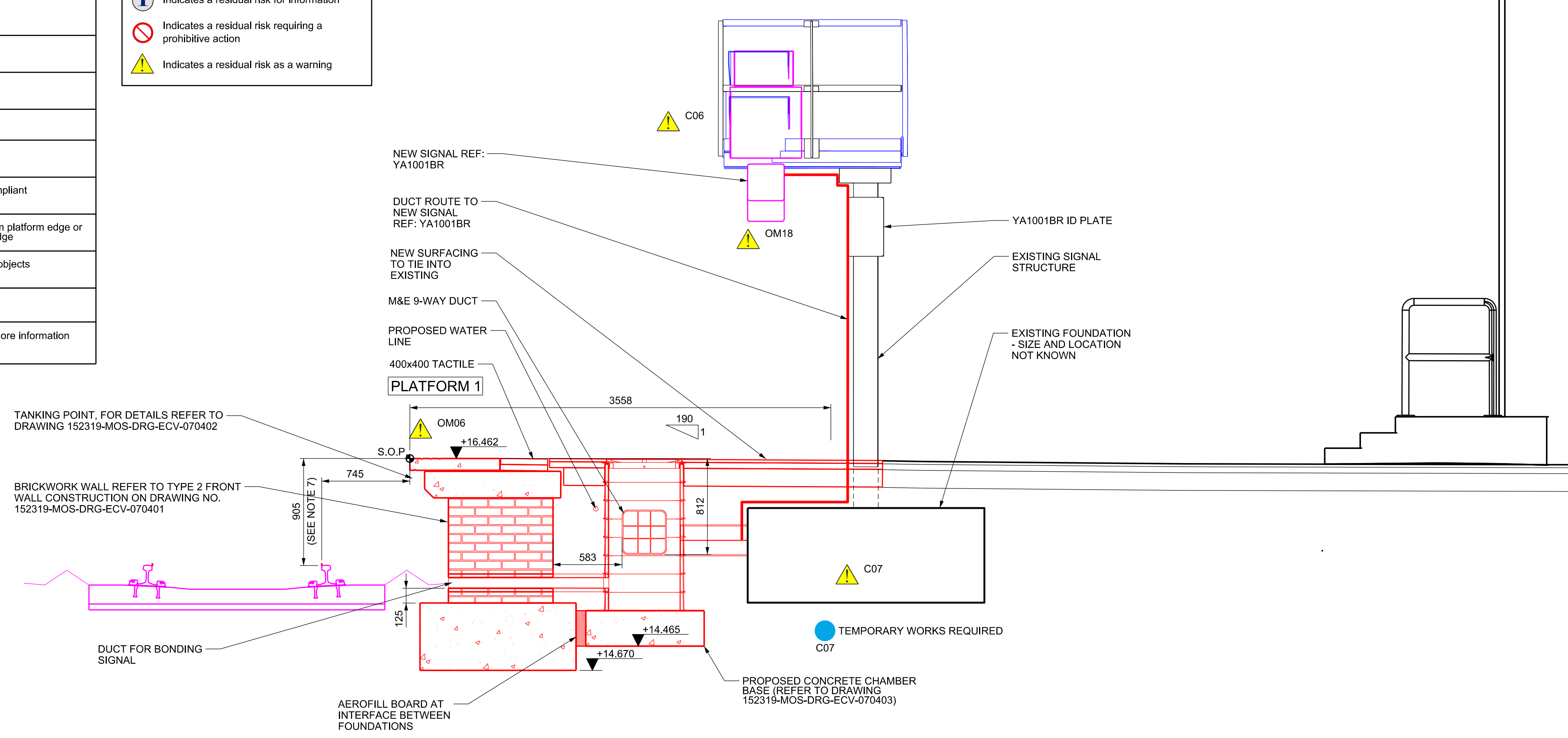


Safety, Health and Environmental Information	
Notes below are additional to hazards/risks normally associated with this type of work. Numbers correspond to Risk Register references - see General Notes drawing for details.	
Construction	
⚠️ C06	Working at height
⚠️ C07	Damage/stability of existing foundations
⚠️ C07	Damage/stability of existing foundations
Operations, Maintenance	
⚠️ OM06	Tanking points - slips, trips & falls
⚠️ OM08	Proposed platform cross falls are non-compliant
⚠️ OM14	Large obstructions less than 2500mm from platform edge or isolated columns less than 2m from the edge
⚠️ OM18	Reduced headroom from low suspended objects
Dismantling / Demolition (Future)	
No risk identified	
Refer to general notes and the Principal Contractor for more information about the risks associated with this work.	

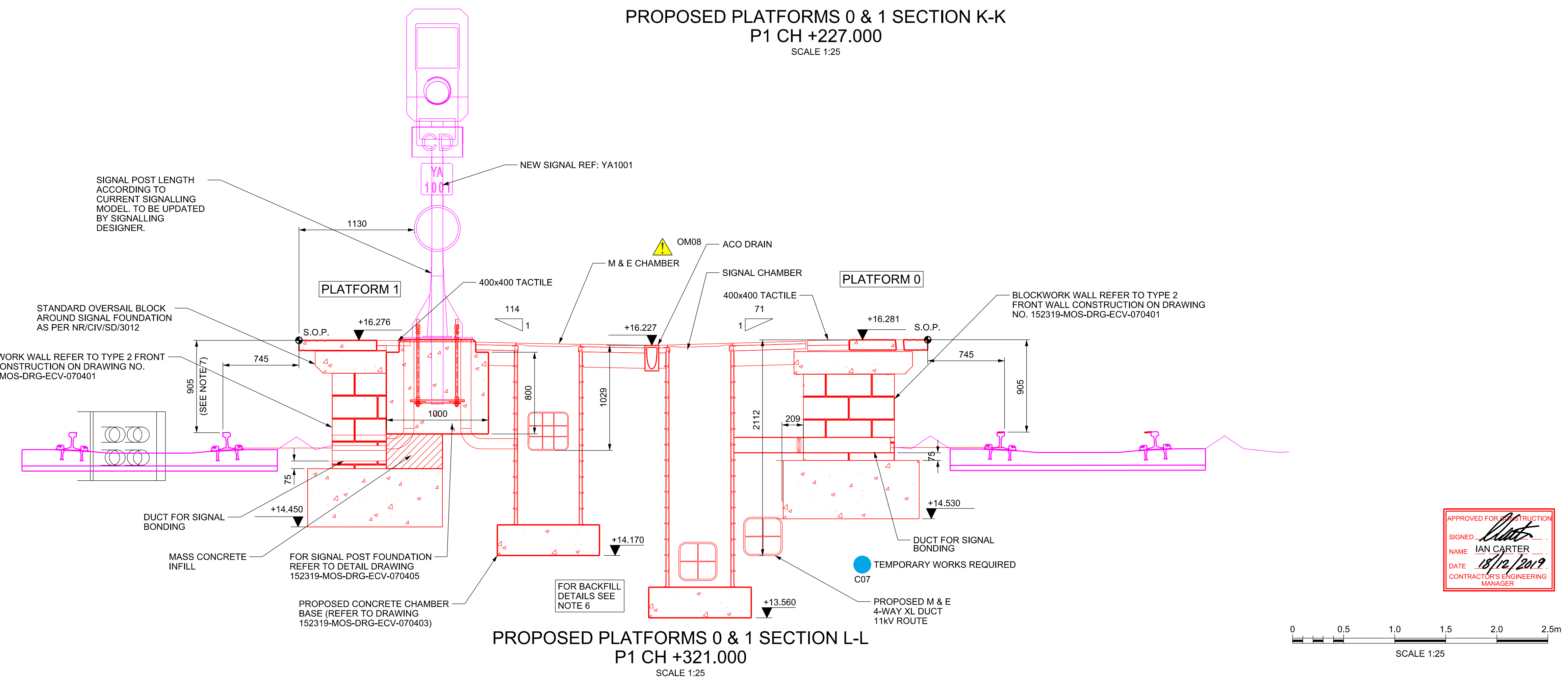
These notes are based on the use of experienced and competent contractors carrying out the work using an approved safe method of working

Key to Health and Safety Symbols

- ⚠️ Indicates a residual risk requiring a compulsory action
- ℹ️ Indicates a residual risk for information
- 🚫 Indicates a residual risk requiring a prohibitive action
- ⚠️ Indicates a residual risk as a warning

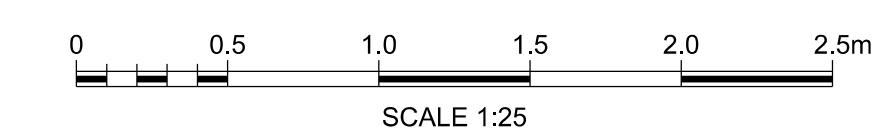


PROPOSED PLATFORMS 0 & 1 SECTION K-K
P1 CH +227.000
SCALE 1:25



PROPOSED PLATFORMS 0 & 1 SECTION L-L
P1 CH +321.000
SCALE 1:25

APPROVED FOR CONSTRUCTION
SIGNED: *[Signature]*
NAME: IAN CARTER
DATE: 18/12/2019
CONTRACTOR'S ENGINEERING MANAGER



- Legend/Notes
- DO NOT SCALE FROM DRAWING. USE FIGURED DIMENSIONS ONLY.
 - ALL DIMENSIONS ARE IN MILLIMETRES AND LEVELS ARE IN METRES AOD.
 - DRAWING TO READ IN CONJUNCTION WITH:
 - 152319-MOS-DRG-ECV-070011 - EXISTING PLATFORM 0/1 GENERAL ARRANGEMENT AND DEMOLITION PLAN - SUBSURFACE
 - 152319-MOS-DRG-ECV-070012 - EXISTING PLATFORM 0/1 GENERAL ARRANGEMENT AND DEMOLITION PLAN - SURFACE 1 OF 2
 - 152319-MOS-DRG-ECV-070013 - EXISTING PLATFORM 0/1 GENERAL ARRANGEMENT AND DEMOLITION PLAN - SURFACE 2 OF 2
 - 152319-MOS-DRG-ECV-070030 - EXISTING PLATFORM 0/1 DEMOLITION SECTIONS
 - 152319-MOS-DRG-ECV-070101 - PROPOSED PLATFORMS GENERAL ARRANGEMENT PLATFORM 0/1
 - 152319-MOS-DRG-ECV-070230 - PROPOSED SECTIONS - PLATFORM 0/1 SECTIONS B-B AND D-D
 - 152319-MOS-DRG-ECV-070231 - PROPOSED SECTIONS - PLATFORM 0/1 SECTION G-G
 - 152319-MOS-DRG-ECV-070232 - PROPOSED SECTIONS - PLATFORM 0/1 SECTION H-H AND J-J
 - 152319-ITD-DRG-ETR-107101 - PACKAGE 7 - HORIZONTAL ALIGNMENT - PLATFORMS 0 TO 10 - PERMANENT WAY - KINGS CROSS STATION / THROAT
 - THIS DESIGN HAS BEEN BASED UPON LDO 'KX Master Federated Model Tracker' AS EXPORTED ON 10/12/19.
 - ALL METAL STRUCTURES TO BE BONDED. DETAILS PROVIDED BY BONDING DESIGNER.
 - COMPACTED FILL MATERIAL AS PER NETWORK RAIL STANDARD DETAIL NR/CIV/SD/3012 OR AGRÉED RECOVERED AND REMEDIATED ALTERNATIVE FILL.
 - X AND Y VALUES INDICATIVE ONLY FOR SETTING OUT OF COPPER LINE AND TRACK X AND Y VALUES REFER TO 152319-AYS-REP-ETR-000057

COLOUR CONVENTIONS

- BLACK - EXISTING OR UNCHANGED
- BLUE - MODIFIED OR TO BE MOVED
- GREEN - REDUNDANT OR TO BE REMOVED
- RED - PROPOSED OR ADDITIONAL
- PURPLE - WORKS BY OTHERS
- ORANGE - FUTURE WORKS
- CYAN - TEMPORARY WORKS

Rev	Date	Description of Revisions	Drawn	Chkd	Appr
P01.4	11/11/19	Issued For F003	JE	CS	--
B01	12/11/19	Issued For F003	JE	CS	HS
P02.1	17/12/19	Issued for Construction	JE	HH	HS
C01	18/12/19	Issued for Construction	JE	HH	HS

Status: **Accepted for Stage 6** Suitability: **A6**



Authorised: I. Carter Signed: IC Date: 18/12/19

Contractor(s): **Morgan Sindall Plc**

Location/Level	No Specific Location	
Type	CAD Drawing	Sub-type Section
Role	Civil Engineer	Discipline Civils
Volume/System	No Specific Volume or System	
Phasing	Proposed	Grip Stage 6

Project: **Kings Cross Remodelling**

Contract No.:

Contract Title:

Drawing Title: **King's Cross Station Platform Extension and Modification Proposed Sections K-K and L-L Platform 0/1**

Designed	Signed	Date
J.ELLIS	JE	17/12/19
H.HO	HH	17/12/19
H.SIMPSON	HS	17/12/19

Scale(s): **As Shown** ELR & Mileage **ECM1** to **0m 353yds**

Alternative Reference: Sheet **4** of **4**

Drawing Number: **152319-MOS-DRG-ECV-070233** Revision: **C01**