

These notes are based on the use of experienced and competent contractors carrying out the work using an approved safe method of working

Key to Health and Safety Symbols

- Indicates a residual risk requiring a compulsory action
- ⓘ Indicates a residual risk for information
- ⊘ Indicates a residual risk requiring a prohibitive action
- ⚠ Indicates a residual risk as a warning

Safety, Health and Environmental Information

Notes below are additional to hazards/risks normally associated with this type of work. Numbers correspond to Risk Register references - see General Notes drawing for details.

Construction

● C07	Damage/stability of existing foundations
⚠ C08	Existing platform in construction area.

Operations, Maintenance

⚠ OM05	OLE masts - new climbing hazard
⚠ OM06	Tanking points - slips, trips & falls
⚠ OM15	Metal structures not bonded

Dismantling / Demolition (Future)

No risk identified

Refer to general notes and the Principal Contractor for more information about the risks associated with this work.

Legend/Notes

- DO NOT SCALE FROM DRAWING, USE FIGURED DIMENSIONS ONLY.
- ALL DIMENSIONS ARE IN MILLIMETRES AND LEVELS ARE IN METRES AOD.
- DRAWING TO READ IN CONJUNCTION WITH:
 - 152319-MOS-DRG-ECV-070011 - EXISTING PLATFORM 0/1 GENERAL ARRANGEMENT AND DEMOLITION PLAN - SUBSURFACE
 - 152319-MOS-DRG-ECV-070012 - EXISTING PLATFORM 0/1 GENERAL ARRANGEMENT AND DEMOLITION PLAN - SURFACE 1 OF 2
 - 152319-MOS-DRG-ECV-070013 - EXISTING PLATFORM 0/1 GENERAL ARRANGEMENT AND DEMOLITION PLAN - SURFACE 2 OF 2
 - 152319-MOS-DRG-ECV-070030 - EXISTING PLATFORM 0/1 DEMOLITION SECTIONS
 - 152319-MOS-DRG-ECV-070101 - PROPOSED PLATFORMS GENERAL ARRANGEMENT PLATFORM 0/1
 - 152319-MOS-DRG-ECV-070230 - PROPOSED SECTIONS - PLATFORM 0/1 SECTIONS B-B AND D-D
 - 152319-MOS-DRG-ECV-070231 - PROPOSED SECTIONS - PLATFORM 0/1 SECTION G-G
 - 152319-MOS-DRG-ECV-070233 - PROPOSED SECTIONS - PLATFORM 0/1 SECTION K-K AND L-L
 - 152319-ITD-DRG-ETR-107101 - PACKAGE 7 - HORIZONTAL ALIGNMENT - PLATFORMS 0 TO 10 - PERMANENT WAY - KINGS CROSS STATION / THROAT
- THIS DESIGN HAS BEEN BASED UPON LDO 'KX Master Federated Model Tracker' AS EXPORTED ON 04/12/19.
- ALL METAL STRUCTURES TO BE BONDED. DETAILS PROVIDED BY BONDING DESIGNER.
- COMPACTED FILL MATERIAL AS PER NETWORK RAIL STANDARD DETAIL NR/CIV/SD/3012 OR AGREED RECOVERED AND REMEDIATED ALTERNATIVE FILL.
- X AND Y VALUES INDICATIVE ONLY FOR SETTING OUT OF COPER LINE AND TRACK X AND Y VALUES REFER TO 152319-AYS-REP-ETR-000057

COLOUR CONVENTIONS

BLACK - EXISTING OR UNCHANGED
BLUE - MODIFIED OR TO BE MOVED
GREEN - REDUNDANT OR TO BE REMOVED
RED - PROPOSED OR ADDITIONAL
PURPLE - WORKS BY OTHERS
ORANGE - FUTURE WORKS
CYAN - TEMPORARY WORKS

P01.8	11/11/19	Issued For F003	JE	CS	---
B01	12/11/19	Issued For F003	JE	CS	HS
P02.1	17/12/19	Issued for Construction	JE	HH	---
C01	18/12/19	Issued for Construction	JE	HH	HS

Rev	Date	Description of Revisions	Drawn	Chkd	Appr
Status					Suitability

Accepted for Stage 6



Authorised	I. Carter	Signed	IC	Date	18/12/19
------------	-----------	--------	----	------	----------

Contractor(s)
Morgan Sindall Plc

Location/Level	No Specific Location
Type	CAD Drawing
Role	Civil Engineer
Volume/System	No Specific Volume or System
Phasing	Proposed
Project	Grip Stage 6

Kings Cross Remodelling

Contract No.

Contract Title

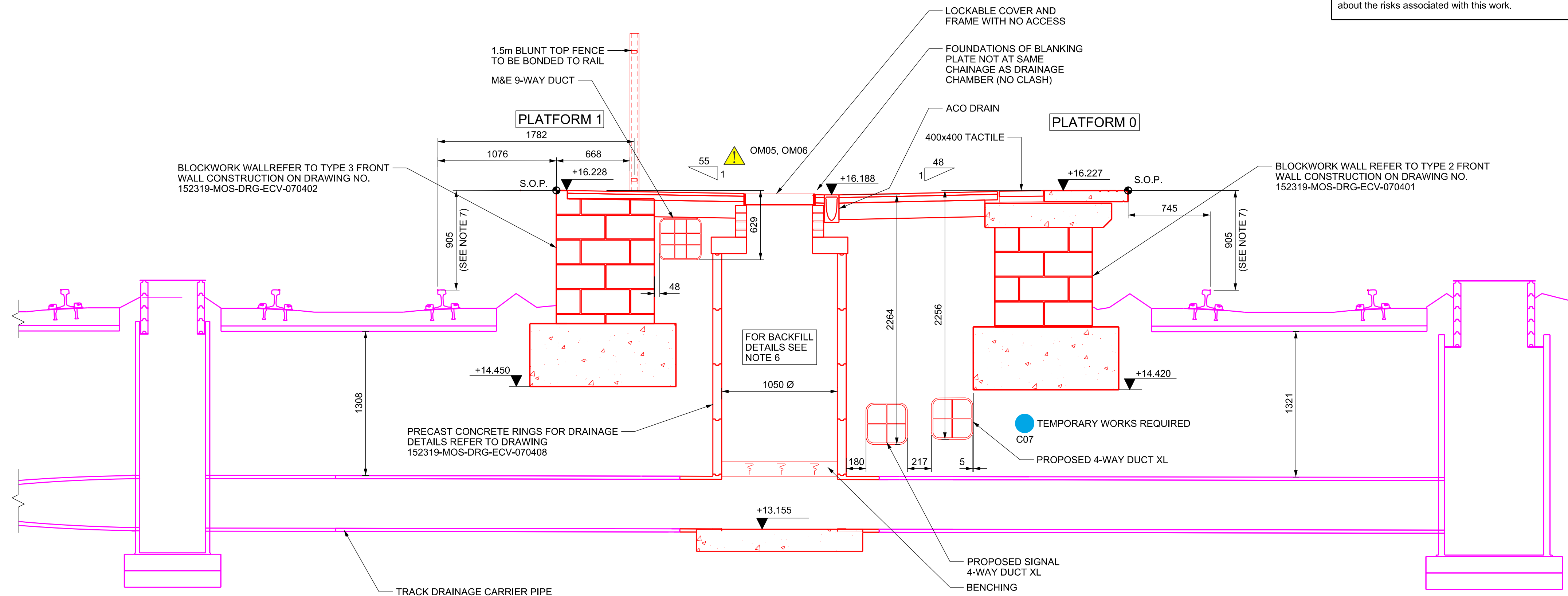
Drawing Title
**King's Cross Station
Platform Extension and Modification
Proposed Sections H-H and J-J
Platform 0/1**

Designed		Signed		Date	21/03/19
Drawn	J.ELLIS	Signed	JE	Date	17/12/19
Checked	H.HO	Signed	HH	Date	17/12/19
Approved	H.SIMPSON	Signed	HS	Date	17/12/19

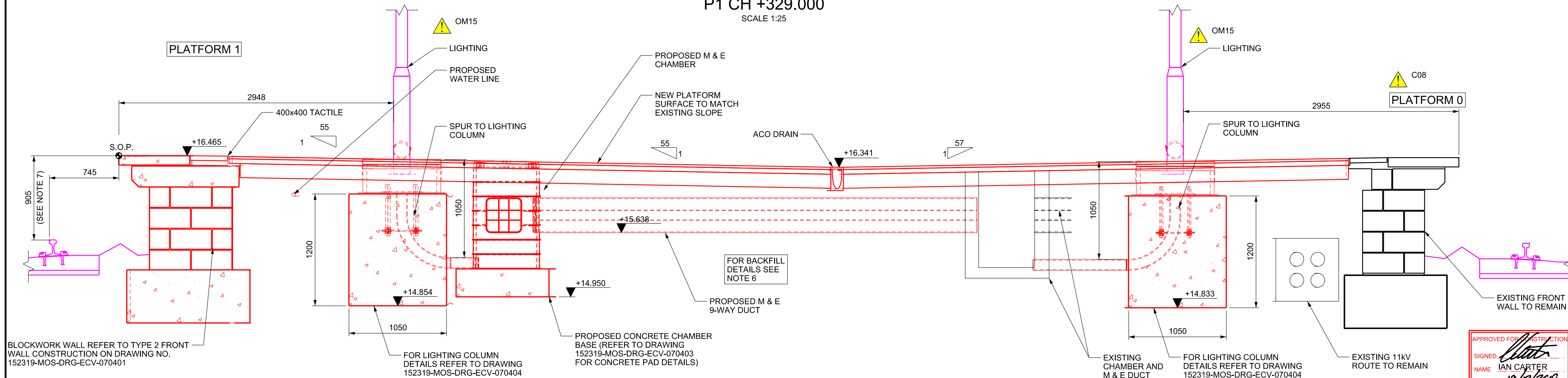
Scale(s)	ELR & Mileage	ECM1	to	0m 353yds
----------	---------------	------	----	-----------

As Shown	Alternative Reference	Sheet	3	of	4
----------	-----------------------	-------	---	----	---

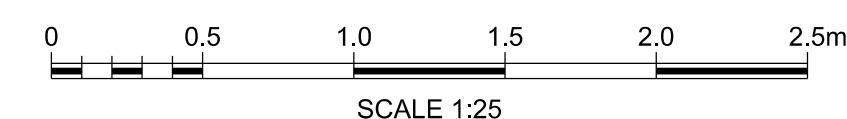
Drawing Number	152319-MOS-DRG-ECV-070232	Revision	C01
----------------	---------------------------	----------	-----



PROPOSED PLATFORMS 0 & 1 SECTION H-H
P1 CH +329.000
SCALE 1:25



PROPOSED PLATFORMS 0 & 1 SECTION J-J
P1 CH +254.000
SCALE 1:25



APPROVED FOR CONSTRUCTION
SIGNED: *[Signature]*
NAME: IAN CARTER
DATE: 18/12/2019
CONTRACTORS ENGINEERING MANAGER