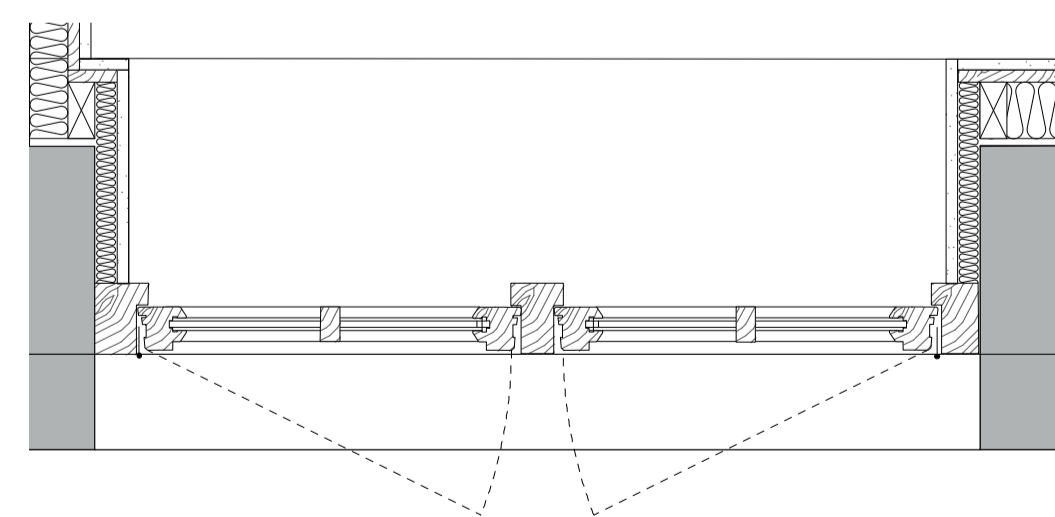
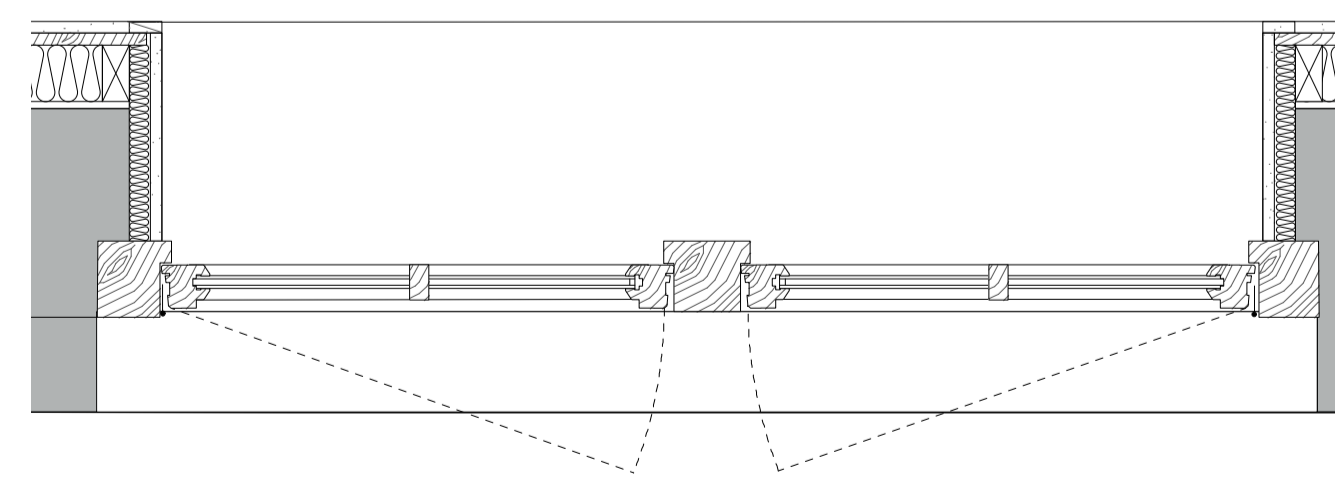


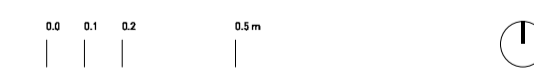
1ST FLOOR



WINDOW TYPE 04:
 REPLACEMENT DOUBLE CASEMENT TOP AND SIDE HUNG
 OPENABLE
 - HERITAGE STYLE DOUBLE GLAZED
 - ALL GLAZING TO TO BE SPECIFIED TO ACHIEVE
 A THERMAL RESISTANCE OF MIN. 1.60W/m2K.



WINDOW TYPE 05:
 REPLACEMENT DOUBLE CASEMENT TOP AND SIDE HUNG
 OPENABLE
 - HERITAGE STYLE DOUBLE GLAZED
 - ALL GLAZING TO TO BE SPECIFIED TO ACHIEVE
 A THERMAL RESISTANCE OF MIN. 1.60W/m2K.



CLARIDGEARCHITECTS

6 LONSDALE ROAD
 LONDON N1 6RD
 info@claridgearchitects.com
 +44(0)20 8969 9223

This drawing is the property of Claridge Architects Ltd. Copyright is reserved & this drawing is issued on the condition that it is not copied, reproduced, retained or disclosed to any unauthorised person, either wholly or in part, without our consent. Do not scale from this drawing. Check all dimensions on site.

22 TOWER STREET
 CLIENT - BRITISH RETAIL CONSORTIUM

TIMBER WINDOWS 02
 STATUS - PLANNING

DRAWN	CHECKED	REVISION
BS	SL	
SCALE	DRAWING	DATE
1:10 @ A1	18010_SW.02	15.01.21