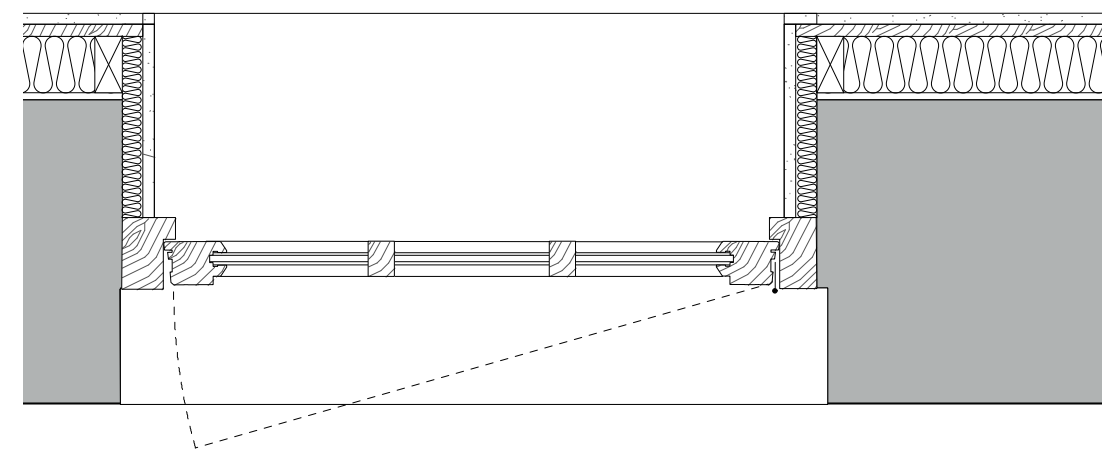


WINDOW TYPE 01:
REPLACEMENT DOUBLE CASEMENT TOP AND SIDE HUNG
OPENABLE
- HERITAGE STYLE DOUBLE GLAZED
- ALL GLAZING TO TO BE SPECIFIED TO ACHIEVE
A THERMAL RESISTANCE OF MIN. 1.60W/m2K.



WINDOW TYPE 02:
REPLACEMENT SINGLE CASEMENT TOP AND SIDE HUNG
OPENABLE
- HERITAGE STYLE DOUBLE GLAZED
- ALL GLAZING TO TO BE SPECIFIED TO ACHIEVE
A THERMAL RESISTANCE OF MIN. 1.60W/m2K.



CLARIDGEARCHITECTS

6 LONSDALE ROAD
LONDON NW6 6RD
info@claridgearchitects.com
+44(0)20 8969 9223

This drawing is the property of Claridge Architects Ltd. Copyright is reserved & this drawing is issued on the condition that it is not copied, reproduced, retained or disclosed to any unauthorised person, either wholly or in part, without our consent. Do not scale from this drawing, check all dimensions on site.

22 TOWER STREET

CLIENT - BRITISH RETAIL CONSORTIUM

TIMBER WINDOWS 01

STATUS - PLANNING

DRAWN	CHECKED	REVISION
BS	SL	-
SCALE	DRAWING	DATE
1:10	@ A1	18010_SW.01 15.01.21