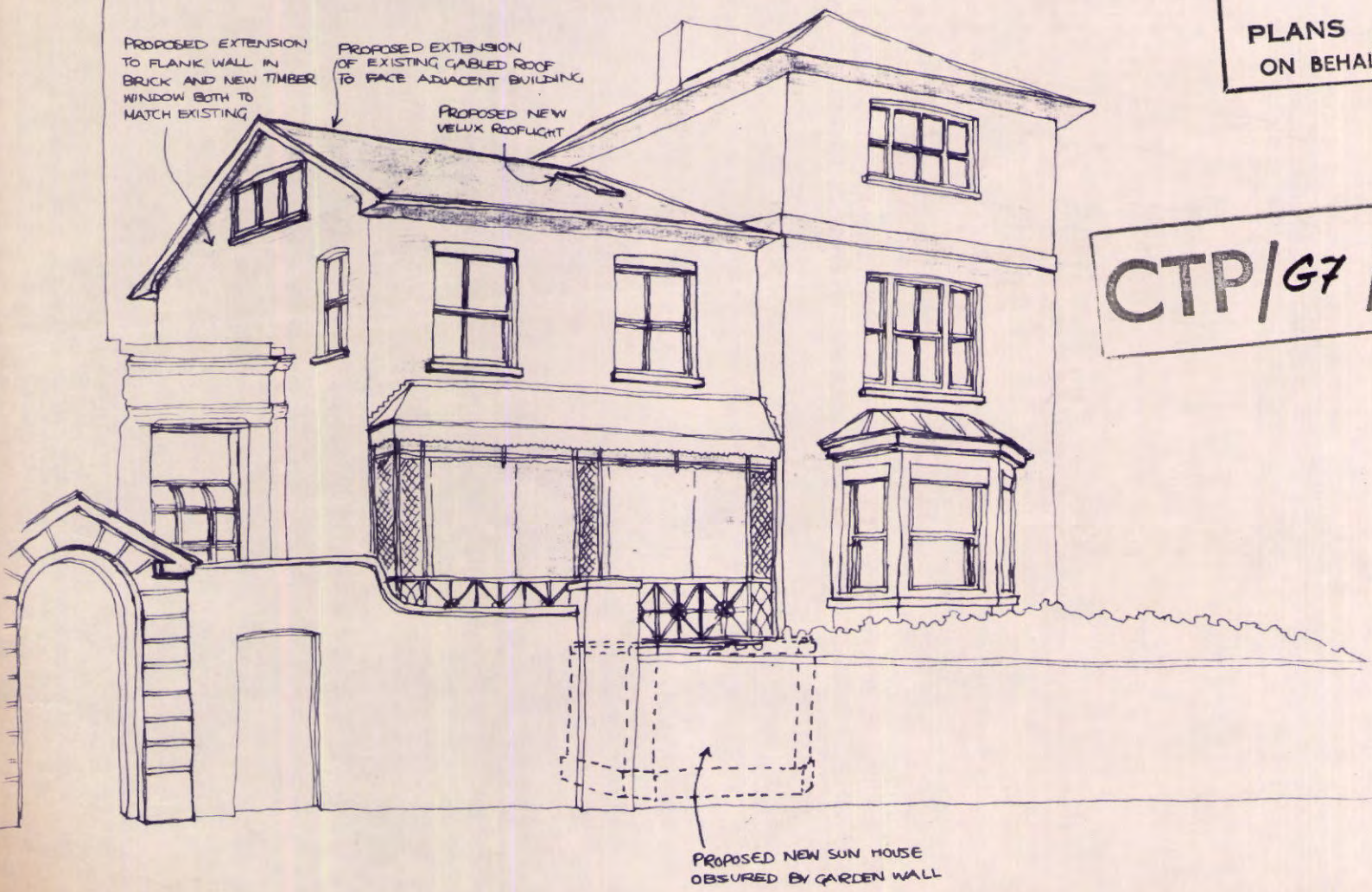


LONDON BOROUGH OF CAMDEN
 TOWN AND COUNTRY PLANNING ACTS
 29 OCT 1980
 PLANS APPROVED
 ON BEHALF OF THE COUNCIL



CTP/G7/11/11/31134

G7/11/11/31134

july '80	nt.s.	B33/06
25, COLLEGE CRESC. NW 3		
FRONT ELEVATION		
AS PROPOSED		
<h1>archinta</h1> <p>architects & interior design associates</p> <p>the studio 59, Chepstow road london W2 01-727 3503</p>		