

Radon Results

Client: Christiaan Steyn
RED Construction Group Ltd
41 - 43 Saffron Hill
London
EC1N 8FH

1 Drake Mews
Gadbrook Park
Cheshire
CW9 7XF

Tel: 01606 563042
info@properteco.co.uk
www.properteco.co.uk

Property:
20-23 Greville Street
London
EC1N 8SS

Date of Radon test: 5th -15th October 2020

Date of Report: 20th October 2020

About PropertECO

Thank you for choosing PropertECO for your 10 day radon test. We have been involved in the field for over 25 years and have unrivalled experience in the practical design and installation of radon remediation systems. Our clients range from private householders to high street retailers, financial institutions to hotels.

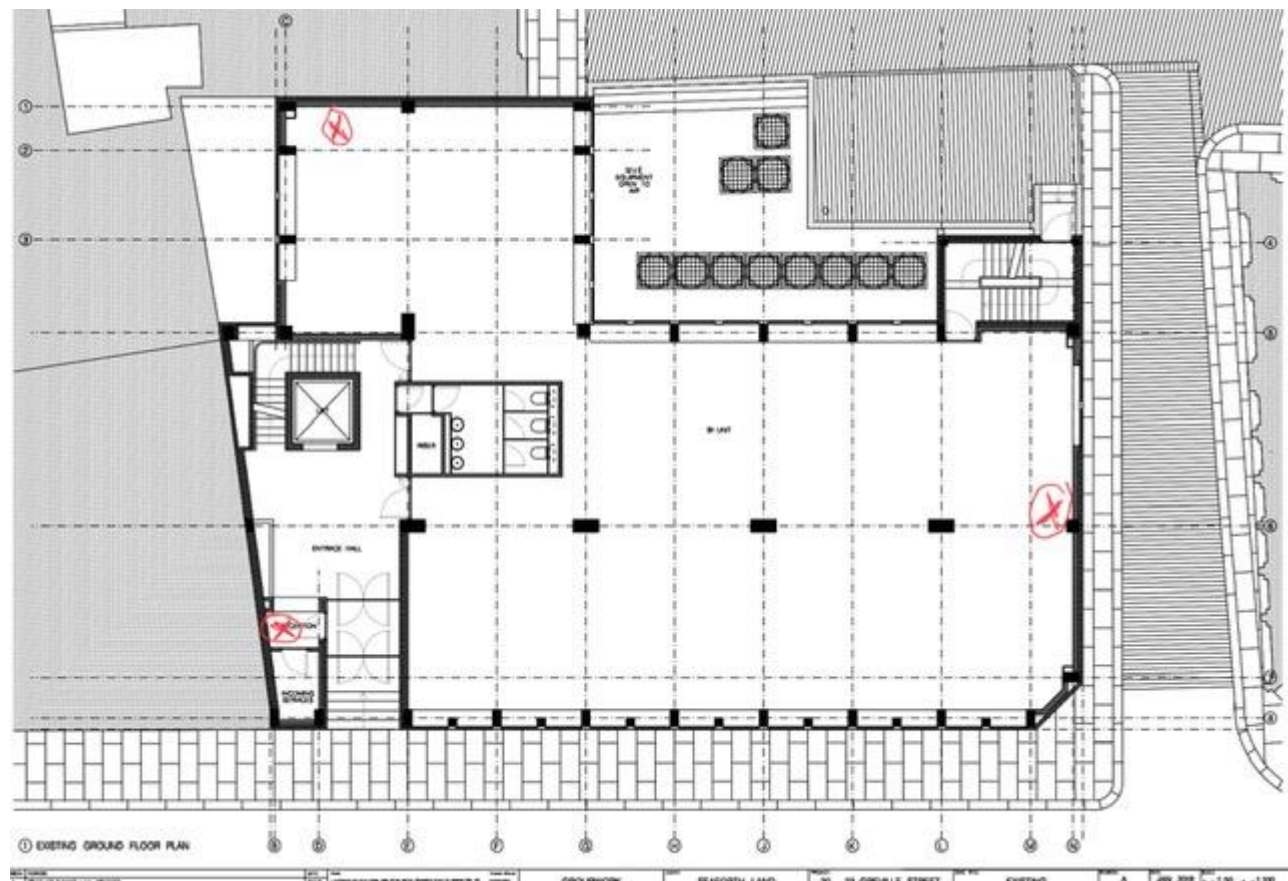
We are a multi-award winning business that is passionate about what we do and committed to delivering the best possible service to our clients.

Introduction

As instructed, PropertECO carried out radon testing in the above property for a period of ten days.

The detectors have now been processed at a third-party independent laboratory validated by Public Health England (formerly the Health Protection Agency).

① EXISTING LOWER GROUND FLOOR PLAN



Results

Detector Number	Location	Raw Radon Level (Bq/m ³)
4415405	Basement, Main office 1	5
4415475	Basement, Main Office 2	5
4415470	Basement, Main Office 3	5
4415434	Basement, Side area	5
4415478	Ground Floor, Main Office 1	23
4415447	Ground Floor, Main office 2	25
4415452	Ground Floor, Side office	5

Radon levels fluctuate throughout the year, and indeed from day to day, however it is not possible to apply seasonal correctional factors to short-term screening tests, and so the above result is the actual level recorded during the testing period.

Radon levels are likely to be highest during the winter months and lowest during the summer. *Due to this, we recommend carrying out a longer term (three month) test to confirm the above readings and ascertain whether the Target Level is exceeded.*

The Ionising Radiations Regulations 2017 (IRR17) apply when any part of a workplace exceeds an annual average level of 300 Bq/m³.

Although until a further 3-month test is carried out we cannot calculate the annual average, the raw radon level do not exceed the action level of Bq/m³, therefore, the Ionising Radiations Regulations 2017 are unlikely to apply.

If you have any queries or would like us to help you with advice or re-testing either within this property you have responsibility for please do not hesitate to contact us on 01606 563 042 or info@properteco.co.uk and we would be pleased to provide further guidance or advice.

Yours sincerely,

Charlotte Holmes

