

FIFTH FLOOR / ROOF

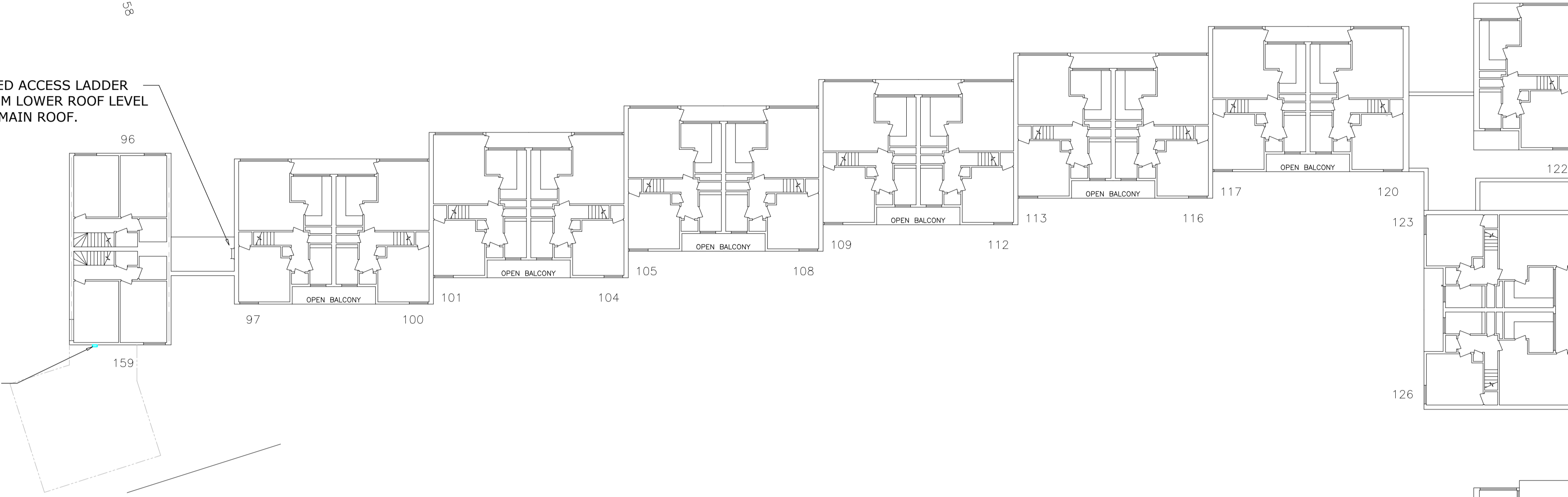
FIXED ACCESS LADDER FROM LOWER ROOF LEVEL TO MAIN ROOF.



FOURTH FLOOR

FIXED ACCESS LADDER FROM LOWER ROOF LEVEL TO MAIN ROOF.

WALL MOUNTED LIGHT FITTING OVER LANDING.



THIRD FLOOR

CEILING MOUNTED LIGHT FITTING.

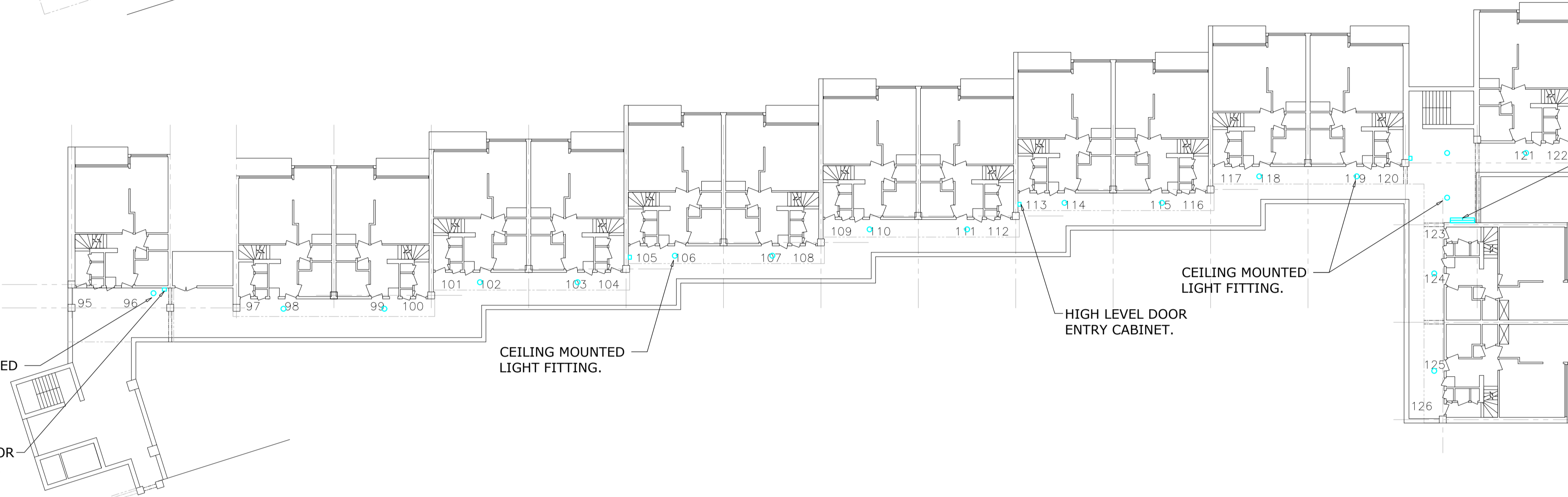
HIGH LEVEL DOOR ENTRY CABINET.

CEILING MOUNTED LIGHT FITTING.

HIGH LEVEL DOOR ENTRY CABINET.

CEILING MOUNTED LIGHT FITTING.

WALL MOUNTED LIGHTING & POWER CABINET.

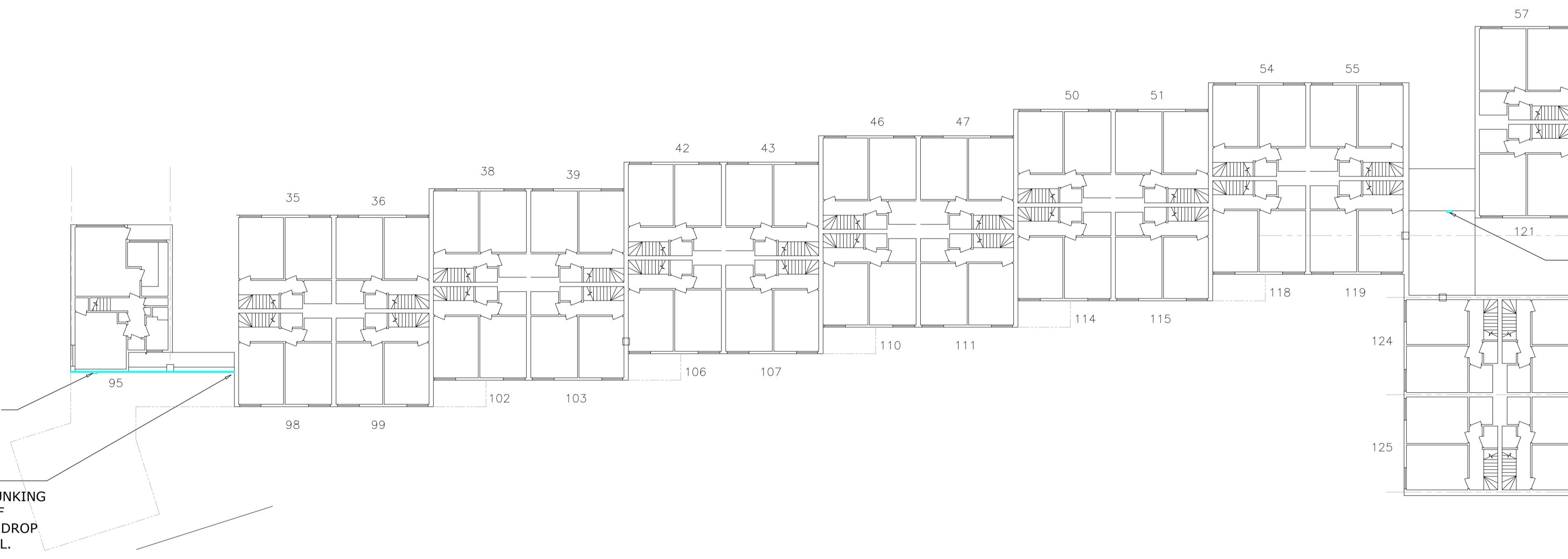


SECOND FLOOR

WALL MOUNTED LIGHT FITTING OVER LANDING.

GALVANISED ELECTRICAL TRUNKING RUN ON FACE OF BRICKWORK TO DROP TO LOWER LEVEL.

WALL MOUNTED LIGHT FITTING OVER LANDING.



FIRST FLOOR

CEILING MOUNTED LIGHT FITTING.

GALVANISED ELECTRICAL TRUNKING FROM HIGHER LEVEL TO TRANSITION TO BALCONY LEVEL.

Electrical intake/services

CEILING MOUNTED LIGHT FITTING.

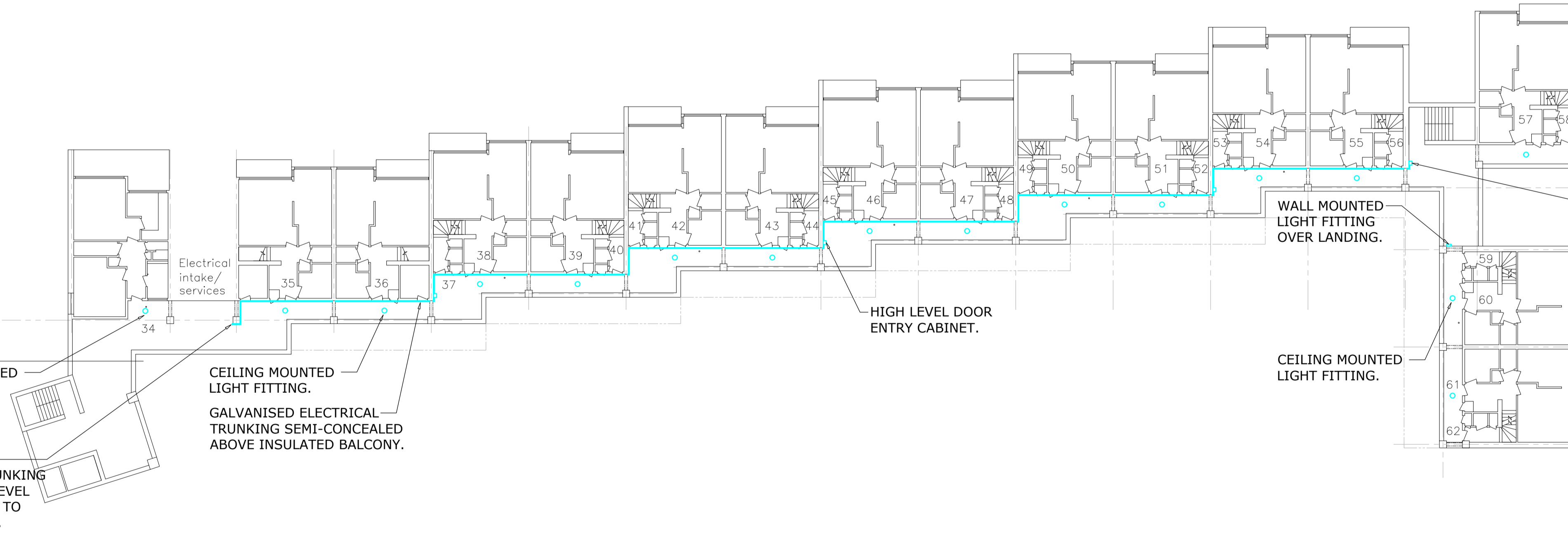
GALVANISED ELECTRICAL TRUNKING SEMI-CONCEALED ABOVE INSULATED BALCONY.

HIGH LEVEL DOOR ENTRY CABINET.

WALL MOUNTED LIGHT FITTING OVER LANDING.

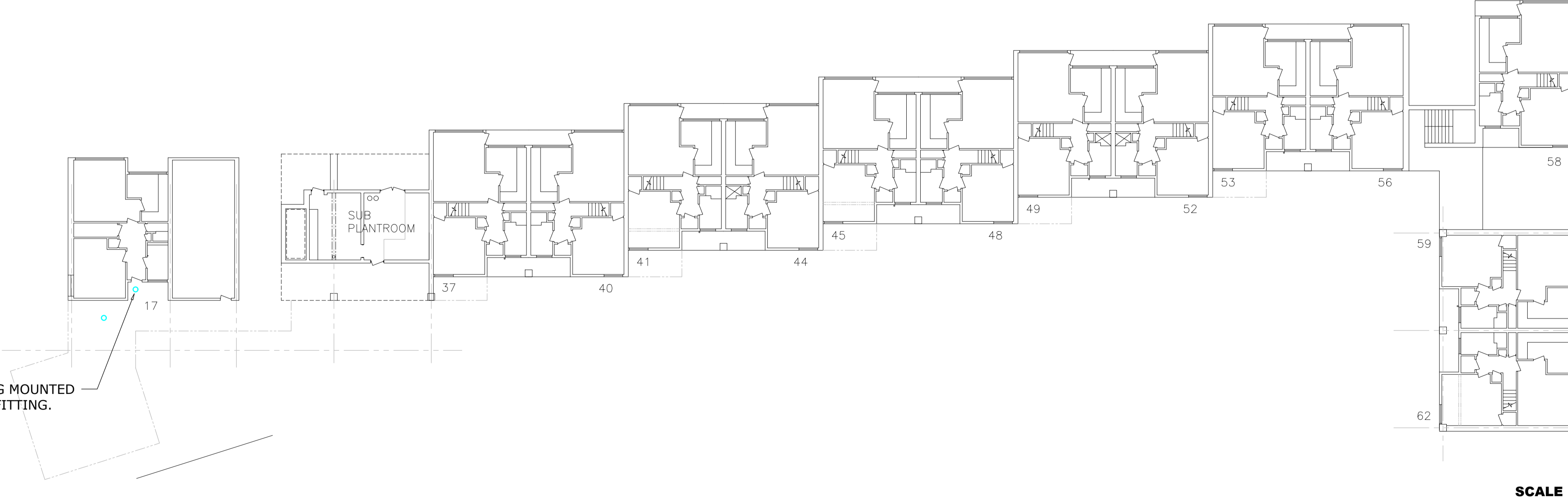
CEILING MOUNTED LIGHT FITTING.

HIGH LEVEL DOOR ENTRY CABINET.



GROUND FLOOR

CEILING MOUNTED LIGHT FITTING.



SCALE BAR 1:200

PLAN LAYOUT (Scale 1:200@A0)



ISSUED FOR APPROVAL

Status A
(Proceed - No further comments)

Status B
(Proceed incorporating comments)

Status C
(Revised)

Signed

Date

Copyright for this drawing remains the property of Invicta Building Services Ltd and copies can only be made with prior permission.

Notes:

ENCASEMENT:
2mm THICK PPC ALUMINIUM PIPE BOXING & ANGLE FRAMEWORK.
RAL COLOUR TBA.
VALVE ACCESS HATCHES SQUARE, FACE FIXED 2mm THICK PPC ALUMINIUM COVER PLATE WITH CORNER FIXINGS TO ALLOW FUTURE ACCESS. ALL SHARP EDGES TO BE REMOVED.

THIS DRAWING IS TO BE READ IN CONJUNCTION WITH PLANNING APPLICATION EXISTING ELEVATION DRAWING 11237/M/DET/SF9/17.
NEW LAYOUT AND DETAILS DRAWING 11237/M/DET/SF9 18, 19 & 20.
FURTHER REFERENCE IS TO BE MADE TO PRE-PLANNING DRAWING 11237/M/DET/SF9/11 AND ASSOCIATED DETAIL DRAWINGS VIEWS 'A' TO 'N' INCLUSIVE.

INVICTA Building Services Ltd

Weald Court, 101-103 Tonbridge Road, Hildenborough, Kent TN11 9HL
Telephone: 01732 833552
Facsimile: 01732 834768

CLIENT
LONDON BOROUGH OF CAMDEN

PROJECT
ST SILAS ESTATE HEATING SYSTEM INSTALLATION CONTRACT. LONDON NW5

TITLE
SOUTHFLEET BLOCK 9 PLANNING APPLICATION EXISTING PLAN LAYOUT DRAWING

Drawn: RDA Date: 08.01.21 Scale: 1:200@A0
Drawing No. 11237/M/DET/SF9/16 Rev. C

C	13.01.21	First application issue.	RDA
Rev	Date	Description	Drawn
Status: PLANNING APPLICATION			