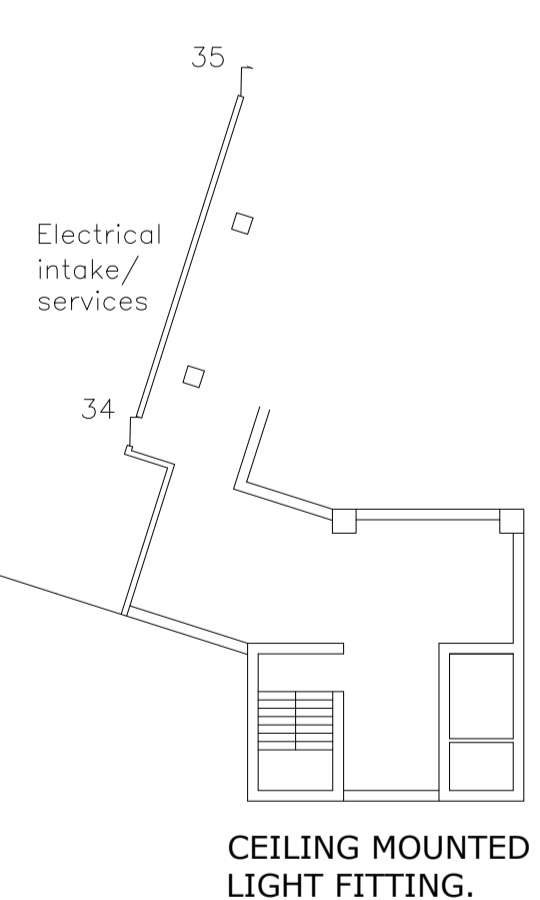
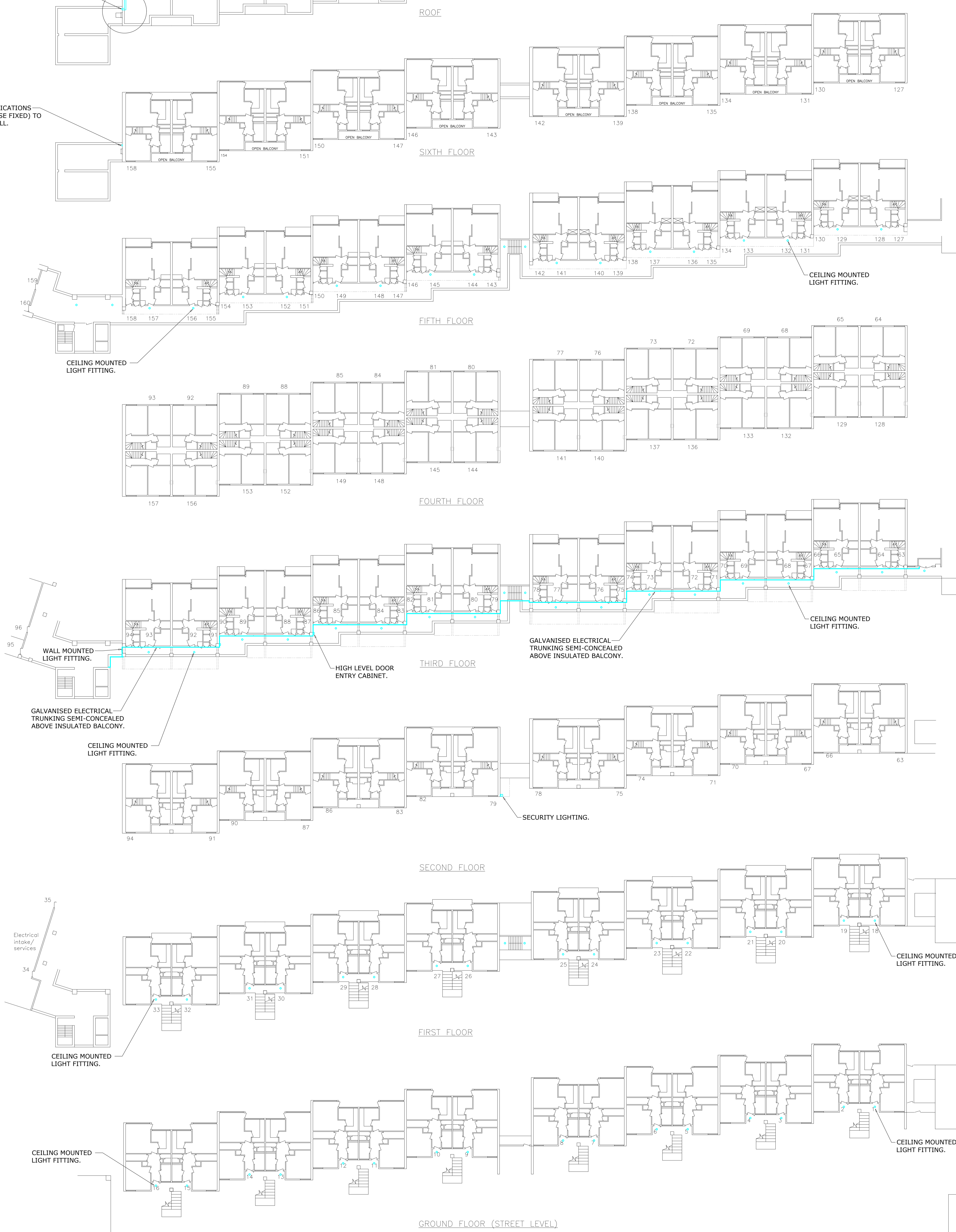
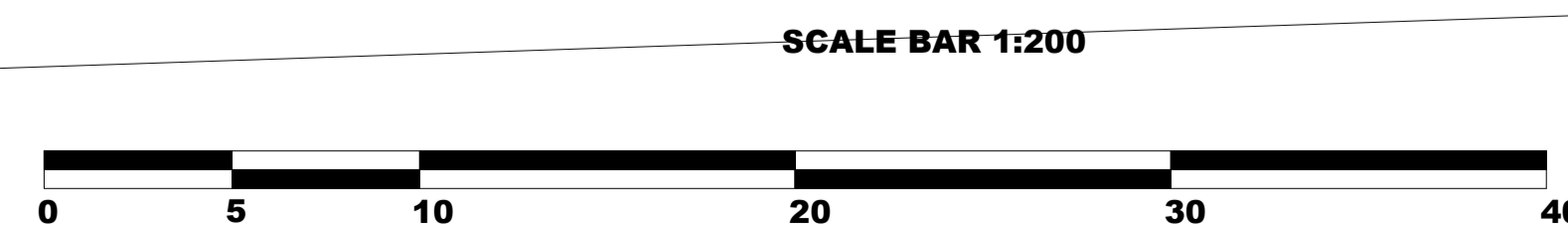


TELECOMMUNICATIONS CABLES (LOOSE FIXED) FROM BELOW TO ROOF LEVEL

TELECOMMUNICATIONS CABLES (LOOSE FIXED) TO VERTICAL WALL



PLAN LAYOUT (Scale 1:200@A0)
MALDEN ROAD



ISSUED FOR APPROVAL

- Status A
(Proceed - No further comments)
- Status B
(Proceed incorporating comments)
- Status C
(Revised)

Signed
Date

Copyright for this drawing remains the property of Invicta Building Services Ltd and copies can only be made with prior permission.

Notes:
ENCASEMENT:
2mm THICK PPC ALUMINIUM PIPE BOXING & ANGLE FRAMEWORK.
RAL COLOUR TBA.
VALVE ACCESS HATCHES SQUARE, FACE FIXED
2mm THICK PPC ALUMINIUM COVER PLATE WITH CORNER FIXINGS TO ALLOW FUTURE ACCESS.
ALL SHARP EDGES TO BE REMOVED.

THIS DRAWING IS TO BE READ IN CONJUNCTION WITH PLANNING APPLICATION EXISTING ELEVATION DRAWING 11237/M/DET/SF5/26.
NEW LAYOUT AND DETAILS DRAWING 11237/M/DET/SF5/27 & 28.
FURTHER REFERENCE IS TO BE MADE TO PRE-PLANNING DRAWING 11237/M/DET/SF5/1 AND ASSOCIATED DETAIL DRAWINGS VIEWS 'A' TO 'X' INCLUSIVE.

INVICTA
Building Services Ltd
Weald Court, 101-103 Tonbridge Road,
Hildenborough,
Kent TN11 9HL
Telephone: 01732 833552
Facsimile: 01732 834768

CLIENT
LONDON BOROUGH OF
CAMDEN
PROJECT
ST SILAS ESTATE HEATING
SYSTEM INSTALLATION
CONTRACT. LONDON NW5

TITLE
SOUTHFLEET BLOCK 5
PLANNING APPLICATION
EXISTING PLAN LAYOUT
DRAWING

C	13.01.21	First application issue.	RDA
Rev	Date	Description	Drawn
Status:	PLANNING APPLICATION		

Drawn: RDA	Date: 30.11.20	Scale: 1:200@A0
Drawing No. i1237/M/DET/SF5/25	Rev. C	