



HOK International Ltd.
Qube, 90 Whitfield Street
London W1T 4EZ United Kingdom
t +44 (0)20 7636 2006
f +44 (0)20 7636 1987

All reproduction & intellectual property rights reserved © 2019
In Association with

Alan Baxter Ltd
75 Cowcross Street
London, EC1M 6EL

TGA Consulting Engineers
The Rivergreen Centre, Aykley Heads
Durham, DH1 5TS

RICHARD IRELAND
Plaster & Paint: Consultancy &
Conservation of Historic Buildings
95A Edith Road, West Kensington,
London, W14 0TJ

Key Plan

Site verify all dimensions prior to construction
Report all discrepancies to HOK immediately
This drawing is to be read in conjunction with all relevant
documents and drawings

Rev.	Description	Date
P01	FOR PLANNING	05/01/2021

Drawn by: LC Reviewed by: SPD
Approved by: SPD Scale @ A1: As indicated

Project No: 19.33048.00

Sheet Title

PORTICO ELEVATION
EXISTING

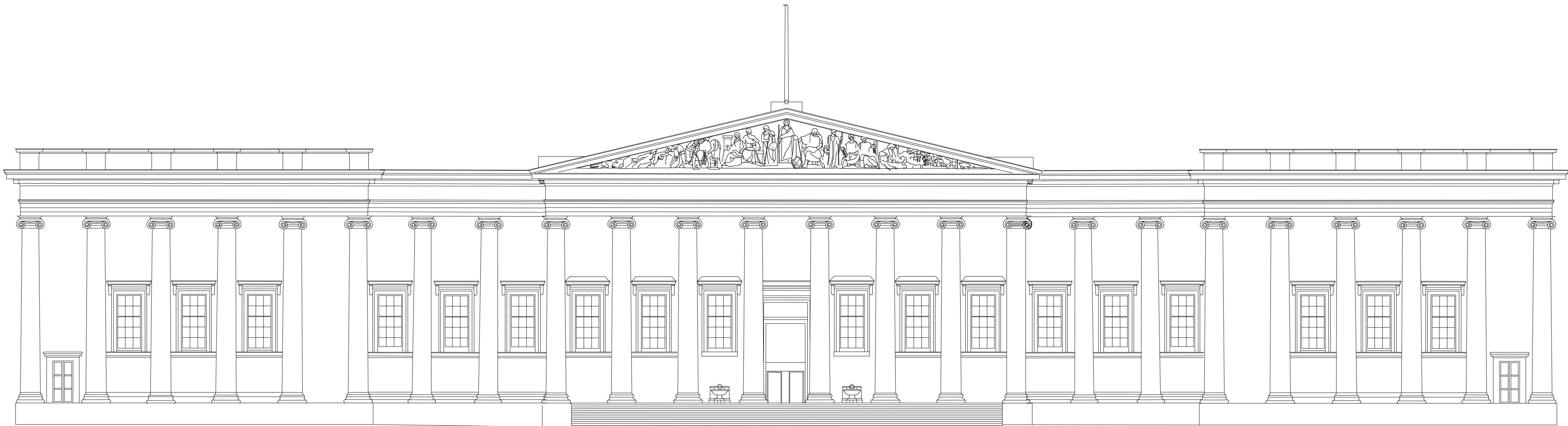
Original drawing is A1. Do not scale contents of this drawing.

Sheet Number

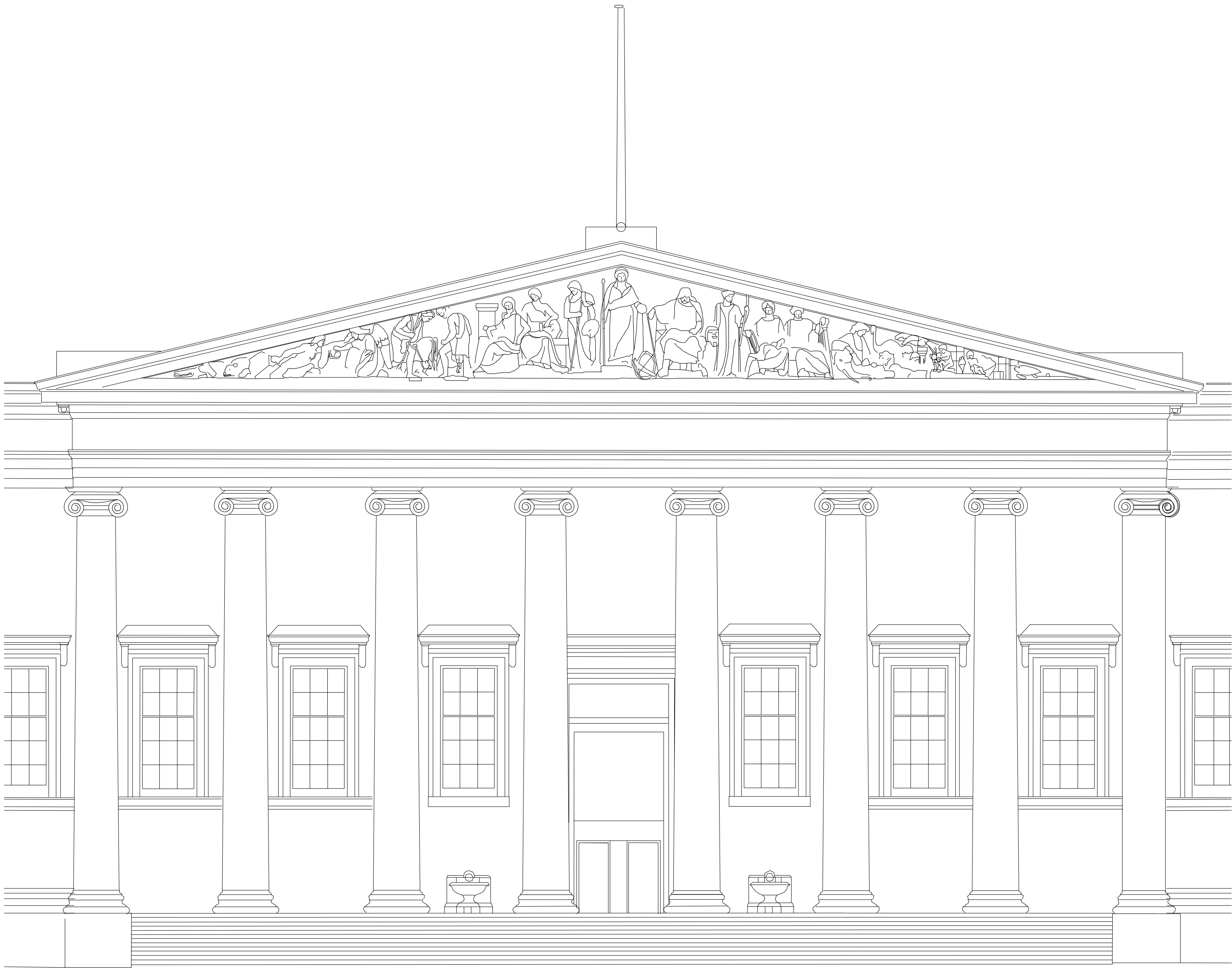
BMSC-HOK-ZZ-XX-DR-A-5004

Status: S1

Revision: P01



1 SOUTH ELEVATION
1 : 200



2 PORTICO ELEVATION - EXISTING
1 : 100

The South Colonnade
Progress of Civilisation statuary
Tympanum of the central Pediment

Sir Richard Westmacott's sculptural composition over the portico of the south entrance to the British Museum date from 1851 and was officially unveiled in 1852. Westmacott used Portland stone and the sculptures are the round and not in relief. The composition shows man's development through the ages, acquiring knowledge and skills in the arts and sciences, as well as natural history. There are 15 statues and 14 accessories and from the progression moves from left (west) to right (east):

- The Primitive Man
- Angel
- Hunter
- Tiller
- Architecture
- Sculpture
- Painting
- Astronomy
- Mathematics
- Drama
- Poetry
- Music
- The Educated Man
- Natural History specimens

Sculptures were carved from Portland stone