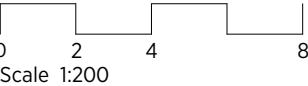


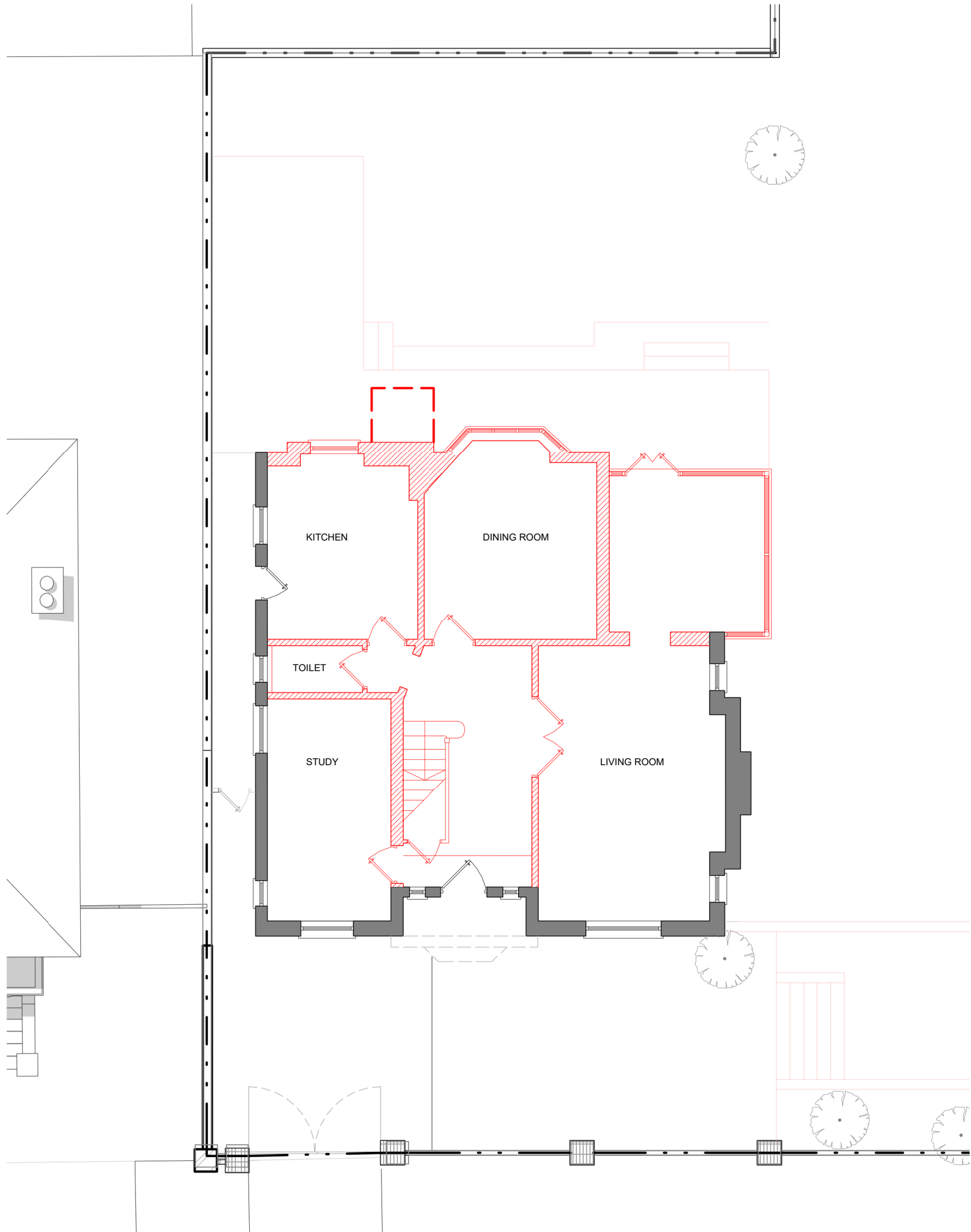
GENERAL NOTES:
This drawing is copyright of KSR architects.
This drawing must be read in conjunction with the Designer's Risk Assessment, specification and all other relevant documentation and drawings.
KSR architects accept no liability for any expense, loss or damage of whatsoever nature and however arising from any variation made to this drawing or in the execution of the work to which it relates which has not been referred to them and their approval obtained.
Areas are based on unchecked survey and are approximate only.
Do not scale from this drawing or the digital data, only figured dimensions are to be used. Refer to linear scale for guidance.
Check all dimensions on site prior to carrying out any works and advise any discrepancy

— = TO BE DEMOLISHED
▨ = PROPOSED OPENINGS / NEW ELEMENTS



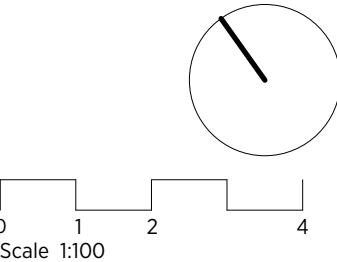
KSR ARCHITECTS & INTERIOR DESIGNERS
KSR Architects LLP
14 Greenland Street
London NW1 0ND
ma@ksrarchitects.com
t: +44 (0)20 7692 5000
www.ksrarchitects.com

12-13 Eldon Grove			
Demolition Ground Floor Site Plan			
Date: 06/01/21	Status: PLANNING		
Scale: 1:200 @ A3	© KSR Architects		
Project Ref:	Drawing No:	Revision:	
20012	D-001		



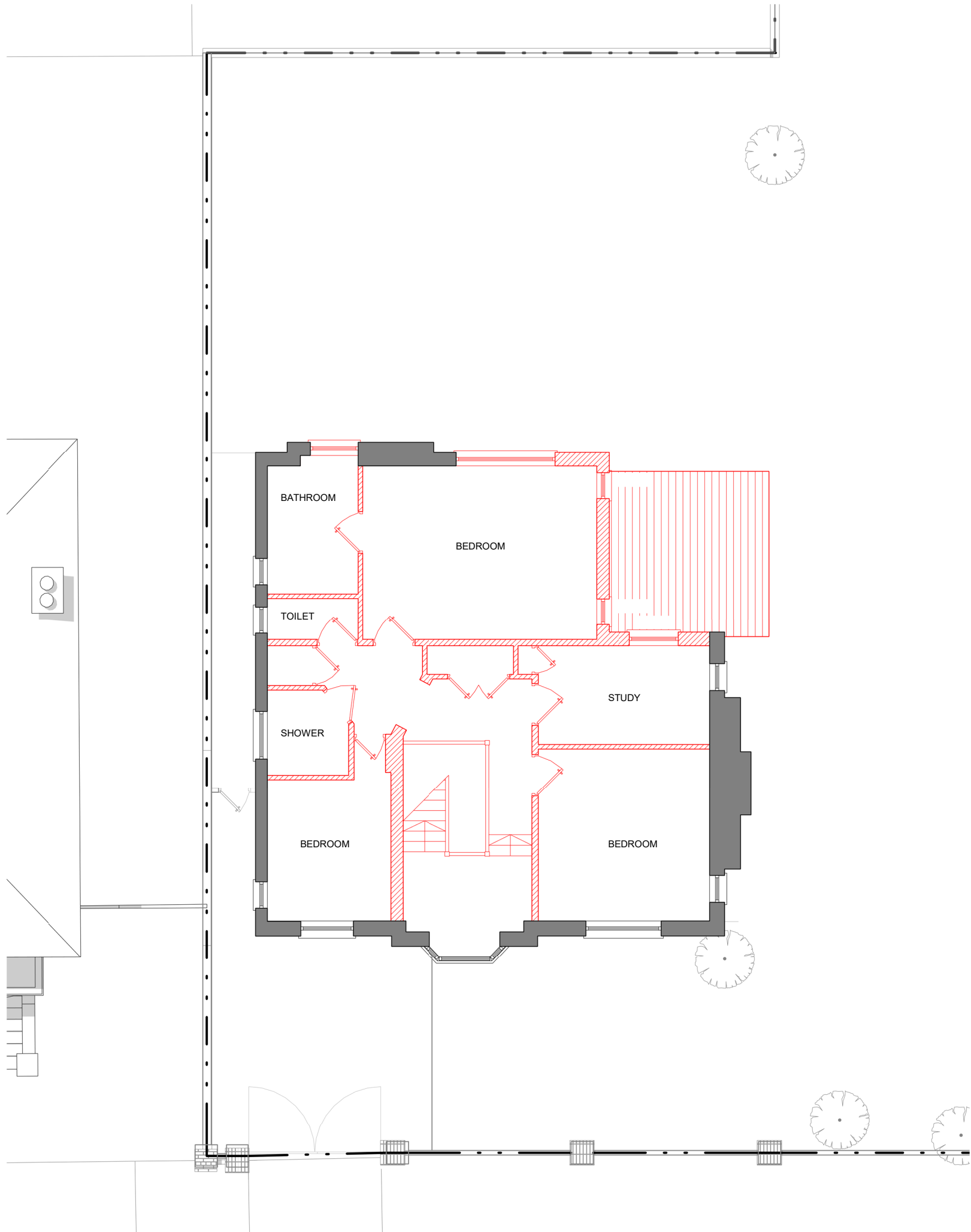
GENERAL NOTES:
This drawing is copyright of KSR architects.
This drawing must be read in conjunction with the Designer's Risk Assessment, specification and all other relevant documentation and drawings.
KSR architects accept no liability for any expense, loss or damage of whatsoever nature and however arising from any variation made to this drawing or in the execution of the work to which it relates which has not been referred to them and their approval obtained.
Areas are based on unchecked survey and are approximate only.
Do not scale from this drawing or the digital data, only figured dimensions are to be used. Refer to linear scale for guidance.
Check all dimensions on site prior to carrying out any works and advise any discrepancy

- = TO BE DEMOLISHED
- = PROPOSED OPENINGS / NEW ELEMENTS



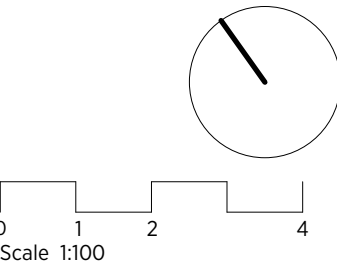
KSR ARCHITECTS & INTERIOR DESIGNERS
KSR Architects LLP
14 Greenland Street
London NW1 0ND
ma@ksrarchitects.com
t: +44 (0)20 7692 5000
www.ksrarchitects.com

12-13 Eldon Grove			
No.12, Demolition Ground Floor			
Date: 06/01/21	Status: PLANNING		
Scale: 1:100 @ A3	© KSR Architects		
Project Ref:	Drawing No:	Revision:	
20012	D-100-12		



GENERAL NOTES:
This drawing is copyright of KSR architects.
This drawing must be read in conjunction with the Designer's Risk Assessment, specification and all other relevant documentation and drawings.
KSR architects accept no liability for any expense, loss or damage of whatsoever nature and however arising from any variation made to this drawing or in the execution of the work to which it relates which has not been referred to them and their approval obtained.
Areas are based on unchecked survey and are approximate only.
Do not scale from this drawing or the digital data, only figured dimensions are to be used. Refer to linear scale for guidance.
Check all dimensions on site prior to carrying out any works and advise any discrepancy

- = TO BE DEMOLISHED
- ▨ = PROPOSED OPENINGS / NEW ELEMENTS

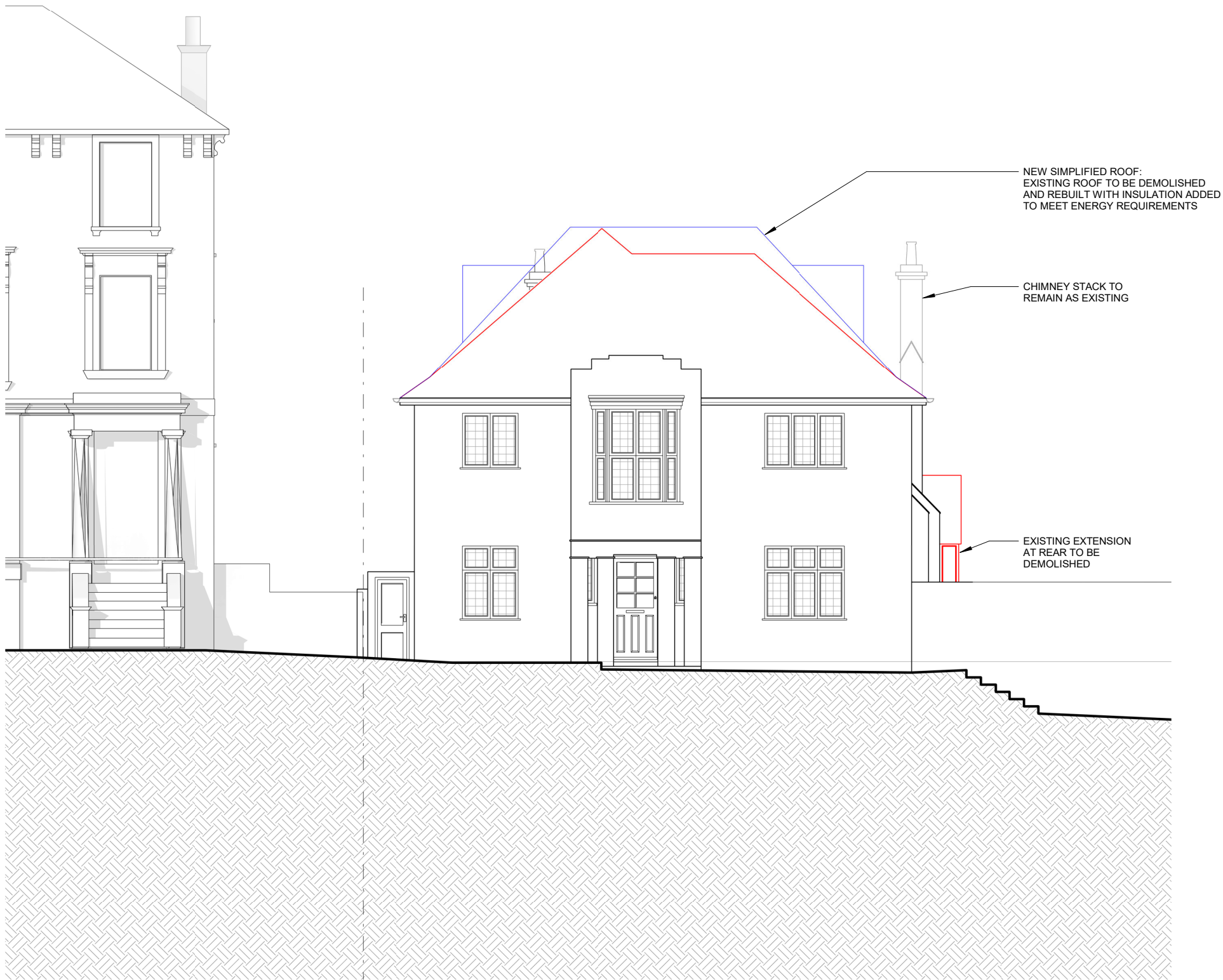


KSR ARCHITECTS & INTERIOR DESIGNERS
KSR Architects LLP
14 Greenland Street
London NW1 0ND
ma@ksrarchitects.com
t: +44 (0)20 7692 5000
www.ksrarchitects.com

12-13 Eldon Grove

No.12, Demolition First Floor

Date: 06/01/21	Status: PLANNING
Scale: 1:100 @ A3	© KSR Architects
Project Ref: 20012	Drawing No: D-110-12
	Revision:



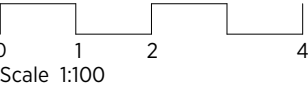
NEW SIMPLIFIED ROOF:
EXISTING ROOF TO BE DEMOLISHED
AND REBUILT WITH INSULATION ADDED
TO MEET ENERGY REQUIREMENTS

CHIMNEY STACK TO
REMAIN AS EXISTING

EXISTING EXTENSION
AT REAR TO BE
DEMOLISHED

GENERAL NOTES:
This drawing is copyright of KSR architects.
This drawing must be read in conjunction with the
Designer's Risk Assessment, specification and all other
relevant documentation and drawings.
KSR architects accept no liability for any expense, loss
or damage of whatsoever nature and however arising
from any variation made to this drawing or in the
execution of the work to which it relates which has not
been referred to them and their approval obtained.
Areas are based on unchecked survey and are
approximate only.
Do not scale from this drawing or the digital data, only
figured dimensions are to be used. Refer to linear scale
for guidance.
Check all dimensions on site prior to carrying out any
works and advise any discrepancy

— = TO BE DEMOLISHED
▨ = PROPOSED OPENINGS /
NEW ELEMENTS



KSR ARCHITECTS &
INTERIOR DESIGNERS
KSR Architects LLP
14 Greenland Street
London NW1 0ND
ma@ksrarchitects.com
t: +44 (0)20 7692 5000
www.ksrarchitects.com

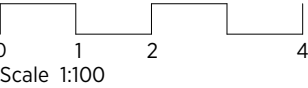
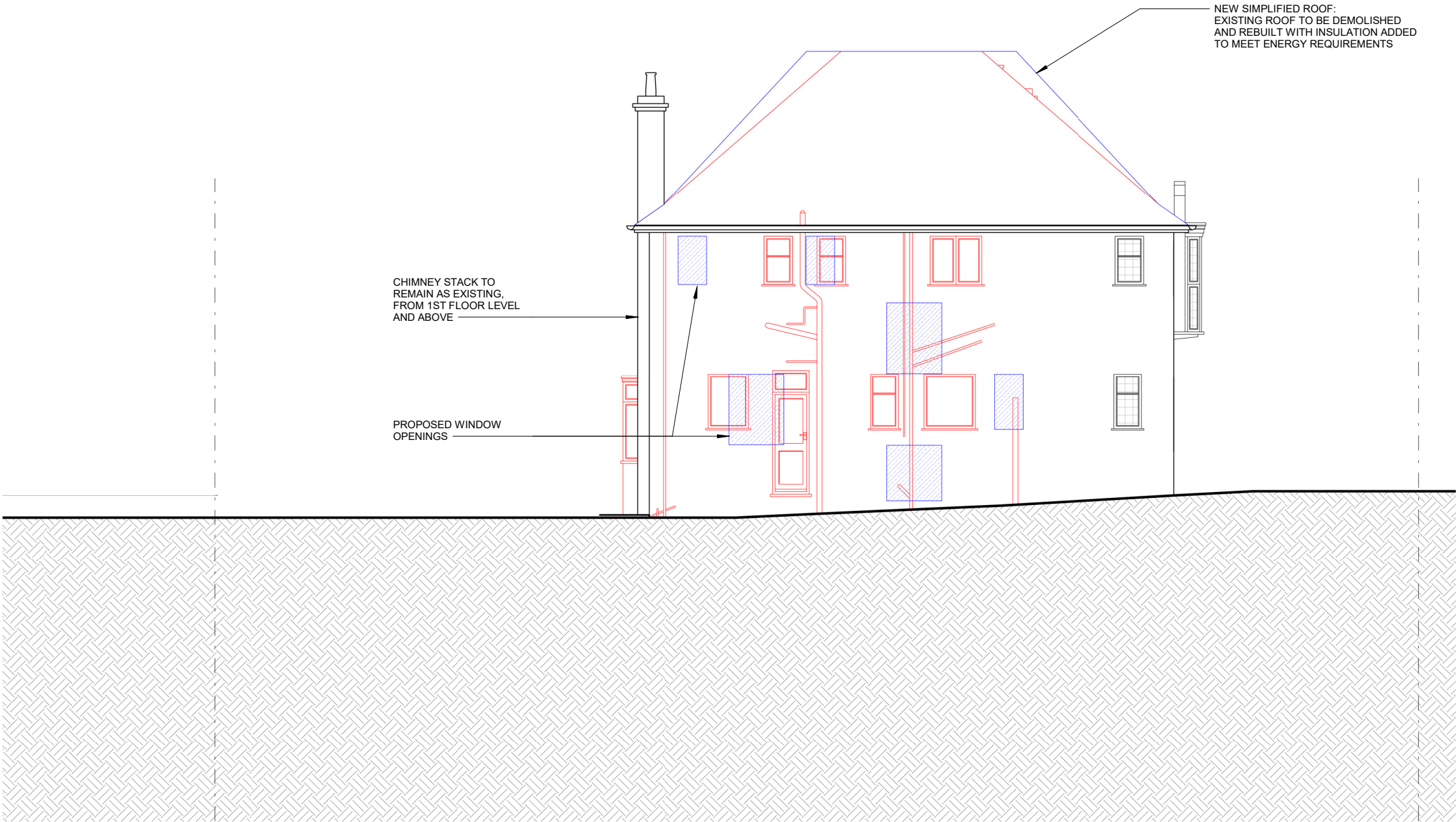
12-13 Eldon Grove

No.12, Demolition Front
Elevation

Date: 06/01/21	Status: PLANNING
Scale: 1:100 @ A3	© KSR Architects
Project Ref: 20012	Drawing No: D-300-12

GENERAL NOTES:
This drawing is copyright of KSR architects.
This drawing must be read in conjunction with the Designer's Risk Assessment, specification and all other relevant documentation and drawings.
KSR architects accept no liability for any expense, loss or damage of whatsoever nature and however arising from any variation made to this drawing or in the execution of the work to which it relates which has not been referred to them and their approval obtained.
Areas are based on unchecked survey and are approximate only.
Do not scale from this drawing or the digital data, only figured dimensions are to be used. Refer to linear scale for guidance.
Check all dimensions on site prior to carrying out any works and advise any discrepancy

— = TO BE DEMOLISHED
▨ = PROPOSED OPENINGS / NEW ELEMENTS

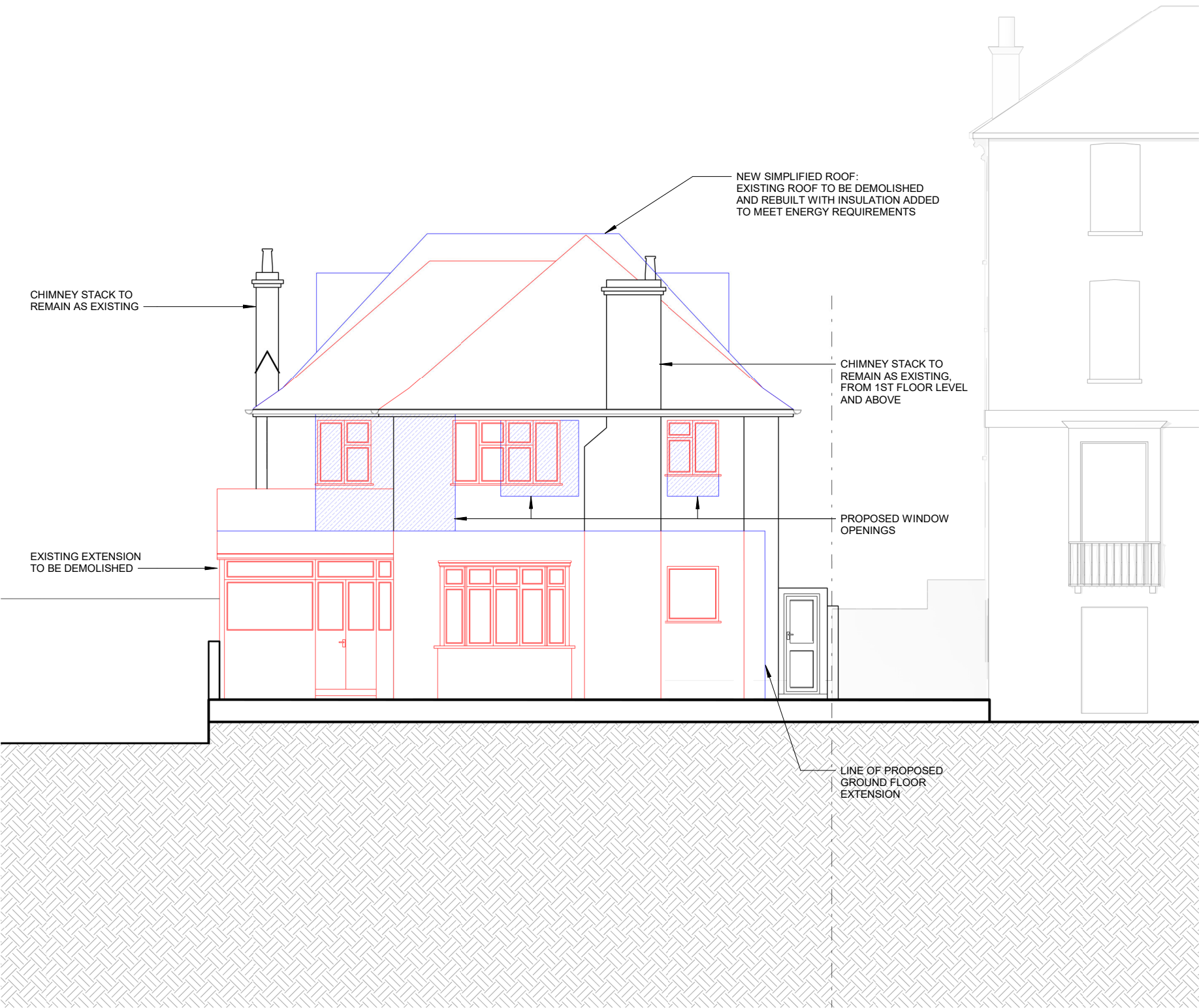


KSR ARCHITECTS & INTERIOR DESIGNERS
KSR Architects LLP
14 Greenland Street
London NW1 0ND
ma@ksrarchitects.com
t: +44 (0)20 7692 5000
www.ksrarchitects.com

12-13 Eldon Grove

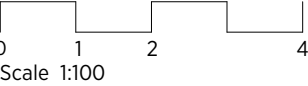
No.12, Demolition Side Elevation
1

Date: 06/01/21	Status: PLANNING
Scale: 1:100 @ A3	© KSR Architects
Project Ref: 20012	Drawing No: D-301-12



GENERAL NOTES:
This drawing is copyright of KSR architects.
This drawing must be read in conjunction with the Designer's Risk Assessment, specification and all other relevant documentation and drawings.
KSR architects accept no liability for any expense, loss or damage of whatsoever nature and however arising from any variation made to this drawing or in the execution of the work to which it relates which has not been referred to them and their approval obtained.
Areas are based on unchecked survey and are approximate only.
Do not scale from this drawing or the digital data, only figured dimensions are to be used. Refer to linear scale for guidance.
Check all dimensions on site prior to carrying out any works and advise any discrepancy

— = TO BE DEMOLISHED
▨ = PROPOSED OPENINGS / NEW ELEMENTS



KSR ARCHITECTS & INTERIOR DESIGNERS
KSR Architects LLP mal@ksrarchitects.com
14 Greenland Street t: +44 (0)20 7692 5000
London NW1 0ND www.ksrarchitects.com

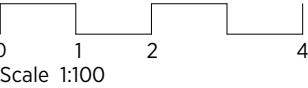
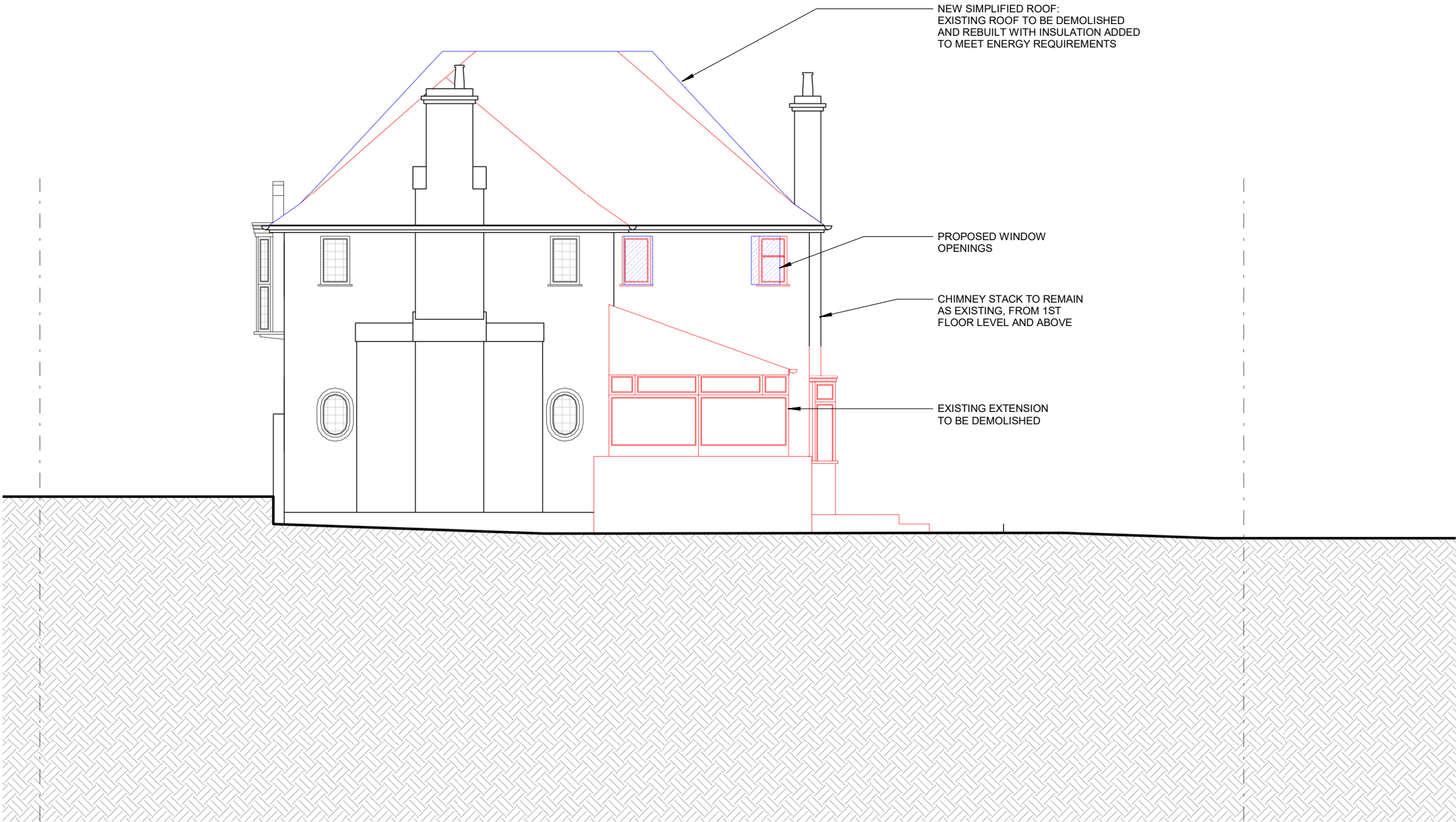
12-13 Eldon Grove

No.12, Demolition Rear Elevation

Date: 06/01/21	Status: PLANNING
Scale: 1:100 @ A3	© KSR Architects
Project Ref: 20012	Drawing No: D-302-12

GENERAL NOTES:
This drawing is copyright of KSR architects.
This drawing must be read in conjunction with the Designer's Risk Assessment, specification and all other relevant documentation and drawings.
KSR architects accept no liability for any expense, loss or damage of whatsoever nature and however arising from any variation made to this drawing or in the execution of the work to which it relates which has not been referred to them and their approval obtained.
Areas are based on unchecked survey and are approximate only.
Do not scale from this drawing or the digital data, only figured dimensions are to be used. Refer to linear scale for guidance.
Check all dimensions on site prior to carrying out any works and advise any discrepancy

— = TO BE DEMOLISHED
▨ = PROPOSED OPENINGS / NEW ELEMENTS



KSR ARCHITECTS &
INTERIOR DESIGNERS
KSR Architects LLP mal@ksrarchitects.com
14 Greenland Street t: +44 (0)20 7692 5000
London NW1 0ND www.ksrarchitects.com

12-13 Eldon Grove

No.12, Demolition Side Elevation
2

Date: 06/01/21	Status: PLANNING
Scale: 1:100 @ A3	© KSR Architects
Project Ref: 20012	Drawing No: D-303-12
Revision:	