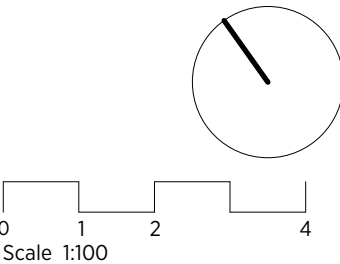
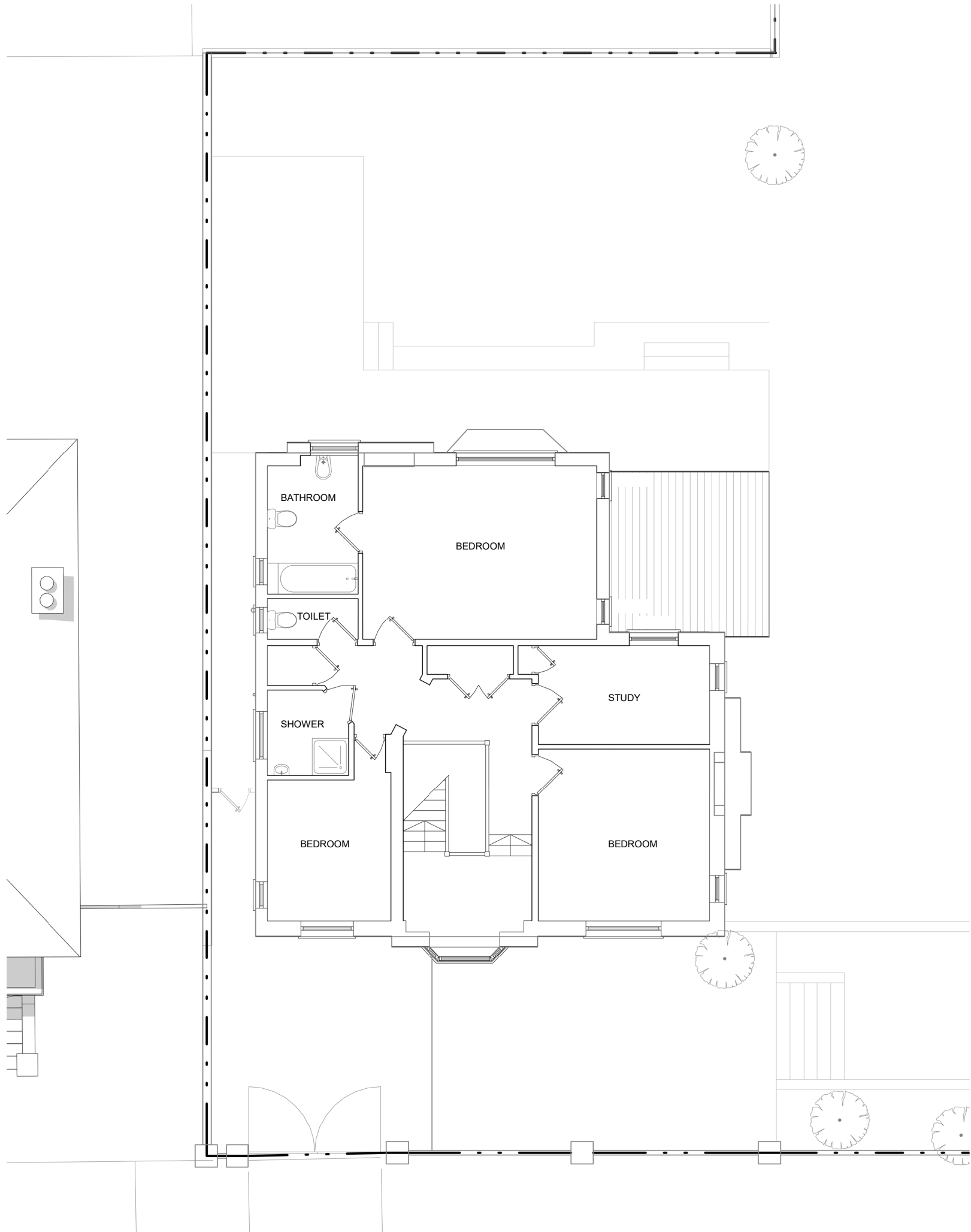


GENERAL NOTES:
This drawing is copyright of KSR architects.
This drawing must be read in conjunction with the Designer's Risk Assessment, specification and all other relevant documentation and drawings.
KSR architects accept no liability for any expense, loss or damage of whatsoever nature and however arising from any variation made to this drawing or in the execution of the work to which it relates which has not been referred to them and their approval obtained.
Areas are based on unchecked survey and are approximate only.
Do not scale from this drawing or the digital data, only figured dimensions are to be used. Refer to linear scale for guidance.
Check all dimensions on site prior to carrying out any works and advise any discrepancy

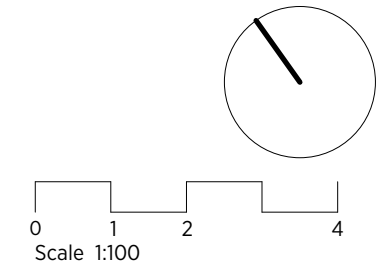


KSR ARCHITECTS & INTERIOR DESIGNERS
KSR Architects LLP
14 Greenland Street
London NW1 0ND
ma@ksrarchitects.com
t: +44 (0)20 7692 5000
www.ksrarchitects.com

12-13 Eldon Grove			
No.12, Existing Ground Floor Plan			
Date: 06/01/21	Status: PLANNING		
Scale: 1:100 @ A3	© KSR Architects		
Project Ref:	Drawing No:	Revision:	
20012	E-100-12		

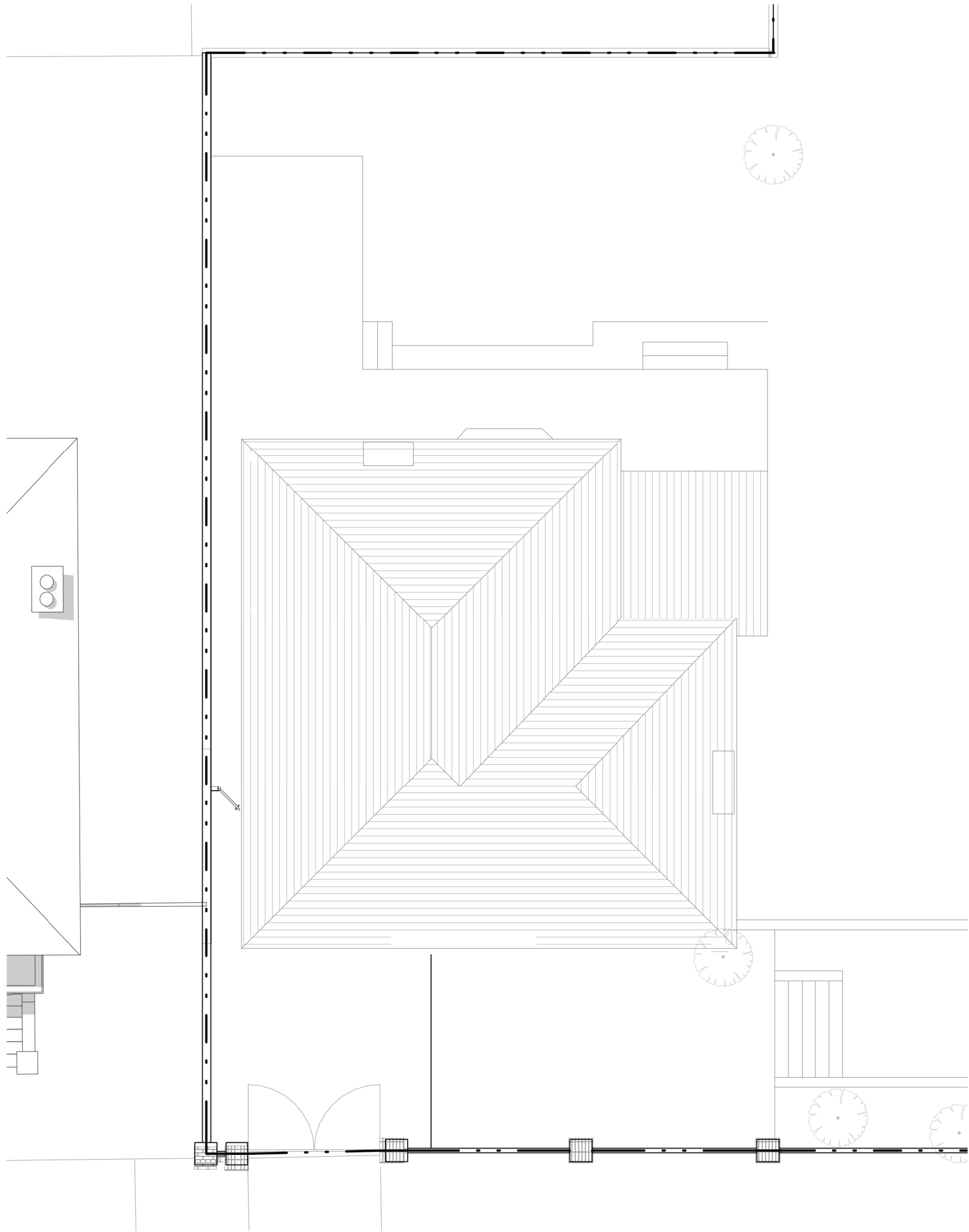


GENERAL NOTES:
This drawing is copyright of KSR architects.
This drawing must be read in conjunction with the Designer's Risk Assessment, specification and all other relevant documentation and drawings.
KSR architects accept no liability for any expense, loss or damage of whatsoever nature and however arising from any variation made to this drawing or in the execution of the work to which it relates which has not been referred to them and their approval obtained.
Areas are based on unchecked survey and are approximate only.
Do not scale from this drawing or the digital data, only figured dimensions are to be used. Refer to linear scale for guidance.
Check all dimensions on site prior to carrying out any works and advise any discrepancy

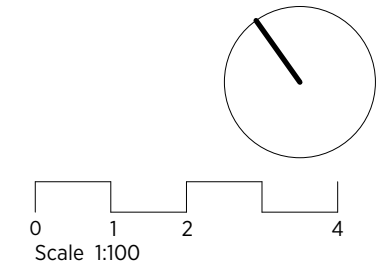


KSR ARCHITECTS & INTERIOR DESIGNERS
KSR Architects LLP mal@ksrarchitects.com
14 Greenland Street t: +44 (0)20 7692 5000
London NW1 0ND www.ksrarchitects.com

12-13 Eldon Grove			
No.12, Existing First Floor Plan			
Date: 06/01/21	Status: PLANNING		
Scale: 1:100 @ A3	© KSR Architects		
Project Ref:	Drawing No:	Revision:	
20012	E-110-12		



GENERAL NOTES:
This drawing is copyright of KSR architects.
This drawing must be read in conjunction with the Designer's Risk Assessment, specification and all other relevant documentation and drawings.
KSR architects accept no liability for any expense, loss or damage of whatsoever nature and however arising from any variation made to this drawing or in the execution of the work to which it relates which has not been referred to them and their approval obtained.
Areas are based on unchecked survey and are approximate only.
Do not scale from this drawing or the digital data, only figured dimensions are to be used. Refer to linear scale for guidance.
Check all dimensions on site prior to carrying out any works and advise any discrepancy

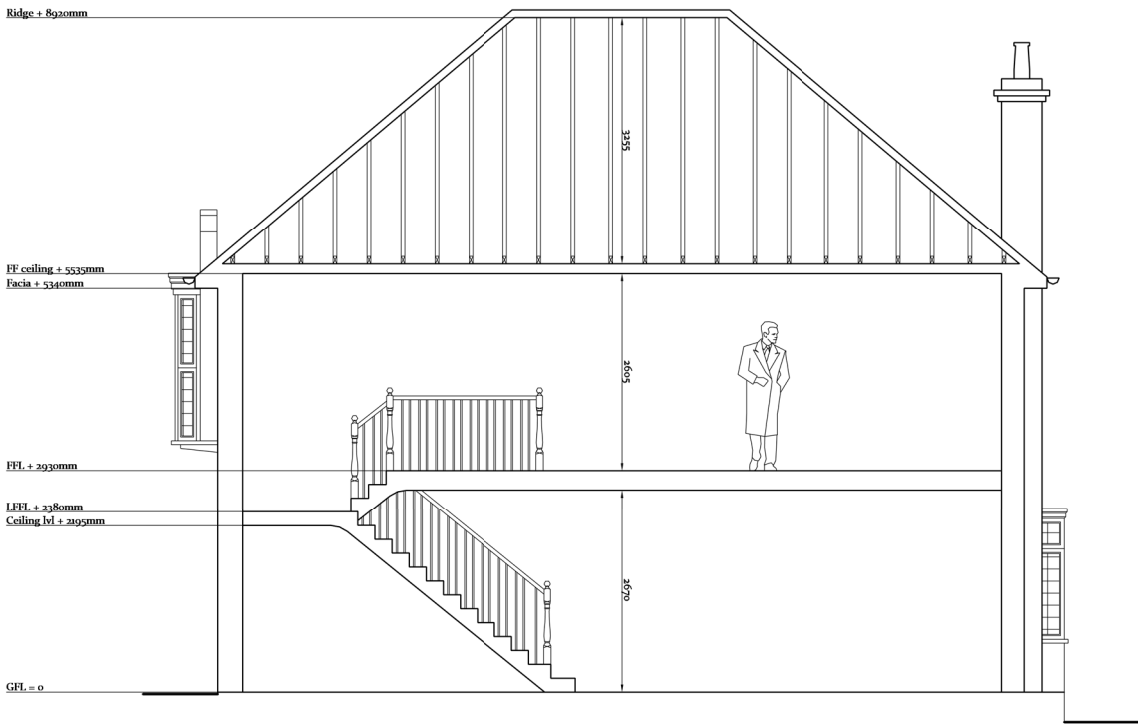


KSR ARCHITECTS &
INTERIOR DESIGNERS
KSR Architects LLP
14 Greenland Street
London NW1 0ND
ma@ksrarchitects.com
t: +44 (0)20 7692 5000
www.ksrarchitects.com

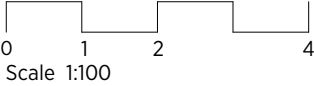
12-13 Eldon Grove

No.12, Existing Roof Plan

Date: 06/01/21	Status: PLANNING
Scale: 1:100 @ A3	© KSR Architects
Project Ref: 20012	Drawing No: E-130-12



GENERAL NOTES:
This drawing is copyright of KSR architects.
This drawing must be read in conjunction with the Designer's Risk Assessment, specification and all other relevant documentation and drawings.
KSR architects accept no liability for any expense, loss or damage of whatsoever nature and however arising from any variation made to this drawing or in the execution of the work to which it relates which has not been referred to them and their approval obtained.
Areas are based on unchecked survey and are approximate only.
Do not scale from this drawing or the digital data, only figured dimensions are to be used. Refer to linear scale for guidance.
Check all dimensions on site prior to carrying out any works and advise any discrepancy



KSR ARCHITECTS & INTERIOR DESIGNERS

KSR Architects LLP
14 Greenland Street
London NW1 0ND

ma@ksrarchitects.com
t: +44 (0)20 7692 5000
www.ksrarchitects.com

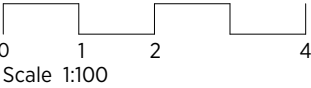
12-13 Eldon Grove

No.12, Existing Section

Date: 06/01/21	Status: PLANNING
Scale: 1:100 @ A3	© KSR Architects
Project Ref: 20012	Drawing No: E-200-12



GENERAL NOTES:
This drawing is copyright of KSR architects.
This drawing must be read in conjunction with the Designer's Risk Assessment, specification and all other relevant documentation and drawings.
KSR architects accept no liability for any expense, loss or damage of whatsoever nature and however arising from any variation made to this drawing or in the execution of the work to which it relates which has not been referred to them and their approval obtained.
Areas are based on unchecked survey and are approximate only.
Do not scale from this drawing or the digital data, only figured dimensions are to be used. Refer to linear scale for guidance.
Check all dimensions on site prior to carrying out any works and advise any discrepancy



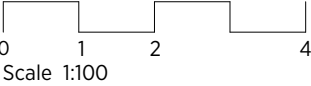
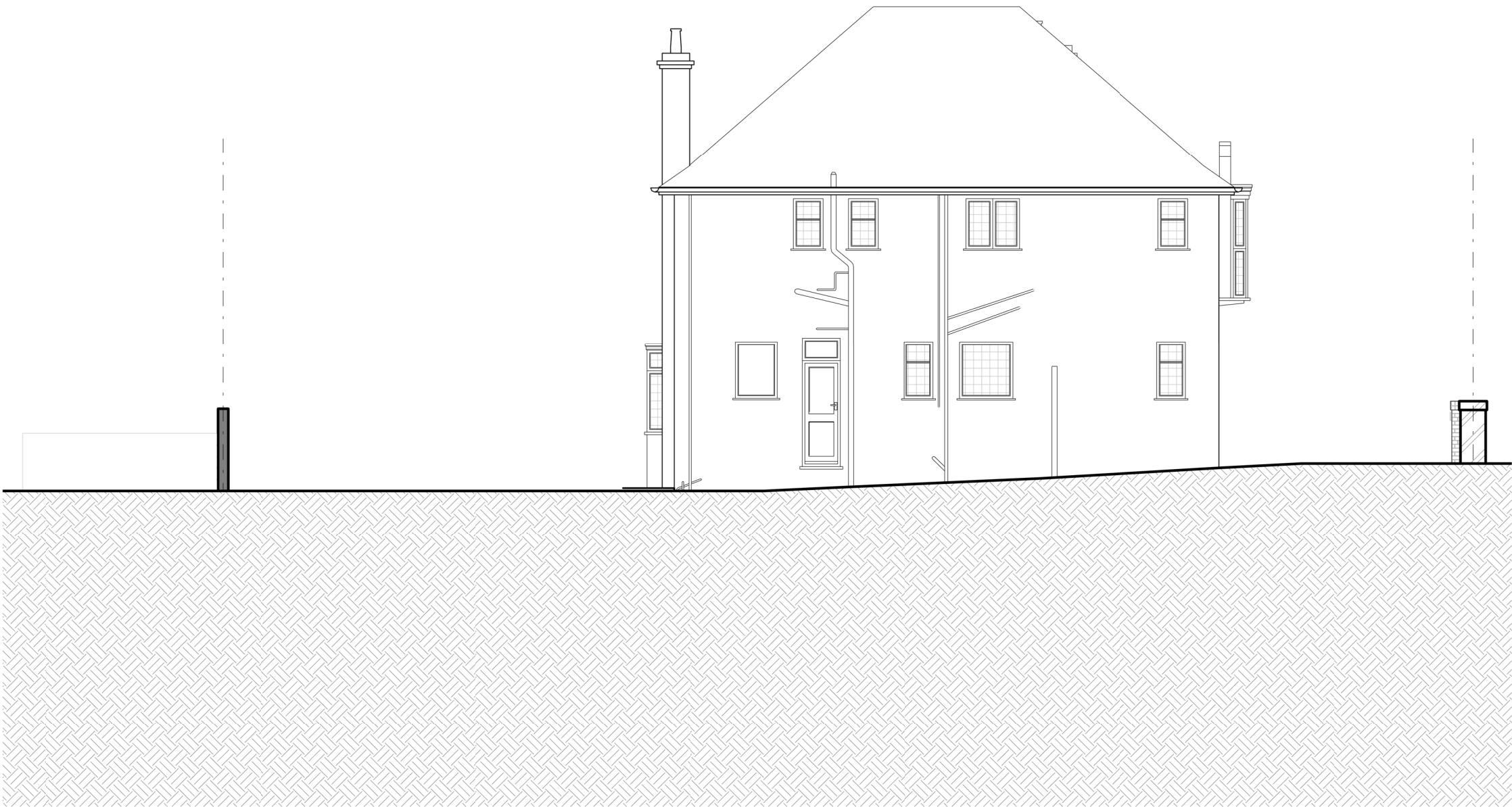
KSR ARCHITECTS &
INTERIOR DESIGNERS
KSR Architects LLP
14 Greenland Street
London NW1 0ND
ma@ksrarchitects.com
t: +44 (0)20 7692 5000
www.ksrarchitects.com

12-13 Eldon Grove

No.12, Existing Front Elevation

Date: 06/01/21	Status: PLANNING
Scale: 1:100 @ A3	© KSR Architects
Project Ref: 20012	Drawing No: E-300-12
	Revision:

GENERAL NOTES:
This drawing is copyright of KSR architects.
This drawing must be read in conjunction with the Designer's Risk Assessment, specification and all other relevant documentation and drawings.
KSR architects accept no liability for any expense, loss or damage of whatsoever nature and however arising from any variation made to this drawing or in the execution of the work to which it relates which has not been referred to them and their approval obtained.
Areas are based on unchecked survey and are approximate only.
Do not scale from this drawing or the digital data, only figured dimensions are to be used. Refer to linear scale for guidance.
Check all dimensions on site prior to carrying out any works and advise any discrepancy



KSR ARCHITECTS &
INTERIOR DESIGNERS
KSR Architects LLP
14 Greenland Street
London NW1 0ND
ma@ksrarchitects.com
t: +44 (0)20 7692 5000
www.ksrarchitects.com

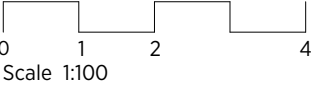
12-13 Eldon Grove

No.12, Existing Side Elevation 1

Date: 06/01/21	Status: PLANNING
Scale: 1:100 @ A3	© KSR Architects
Project Ref: 20012	Drawing No: E-301-12



GENERAL NOTES:
This drawing is copyright of KSR architects.
This drawing must be read in conjunction with the Designer's Risk Assessment, specification and all other relevant documentation and drawings.
KSR architects accept no liability for any expense, loss or damage of whatsoever nature and however arising from any variation made to this drawing or in the execution of the work to which it relates which has not been referred to them and their approval obtained.
Areas are based on unchecked survey and are approximate only.
Do not scale from this drawing or the digital data, only figured dimensions are to be used. Refer to linear scale for guidance.
Check all dimensions on site prior to carrying out any works and advise any discrepancy



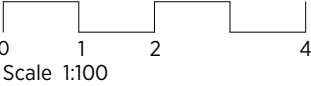
KSR ARCHITECTS &
INTERIOR DESIGNERS
KSR Architects LLP
14 Greenland Street
London NW1 0ND
ma@ksrarchitects.com
t: +44 (0)20 7692 5000
www.ksrarchitects.com

12-13 Eldon Grove

No.12, Existing Rear Elevation

Date: 06/01/21	Status: PLANNING
Scale: 1:100 @ A3	© KSR Architects
Project Ref: 20012	Drawing No: E-302-12

GENERAL NOTES:
This drawing is copyright of KSR architects.
This drawing must be read in conjunction with the Designer's Risk Assessment, specification and all other relevant documentation and drawings.
KSR architects accept no liability for any expense, loss or damage of whatsoever nature and however arising from any variation made to this drawing or in the execution of the work to which it relates which has not been referred to them and their approval obtained.
Areas are based on unchecked survey and are approximate only.
Do not scale from this drawing or the digital data, only figured dimensions are to be used. Refer to linear scale for guidance.
Check all dimensions on site prior to carrying out any works and advise any discrepancy



KSR ARCHITECTS &
INTERIOR DESIGNERS
KSR Architects LLP
14 Greenland Street
London NW1 0ND
ma@ksrarchitects.com
t: +44 (0)20 7692 5000
www.ksrarchitects.com

12-13 Eldon Grove

No.12, Existing Side Elevation 2

Date: 06/01/21	Status: PLANNING
Scale: 1:100 @ A3	© KSR Architects
Project Ref: 20012	Drawing No: E-303-12