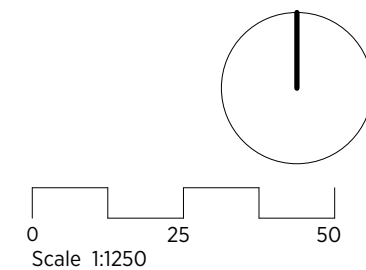
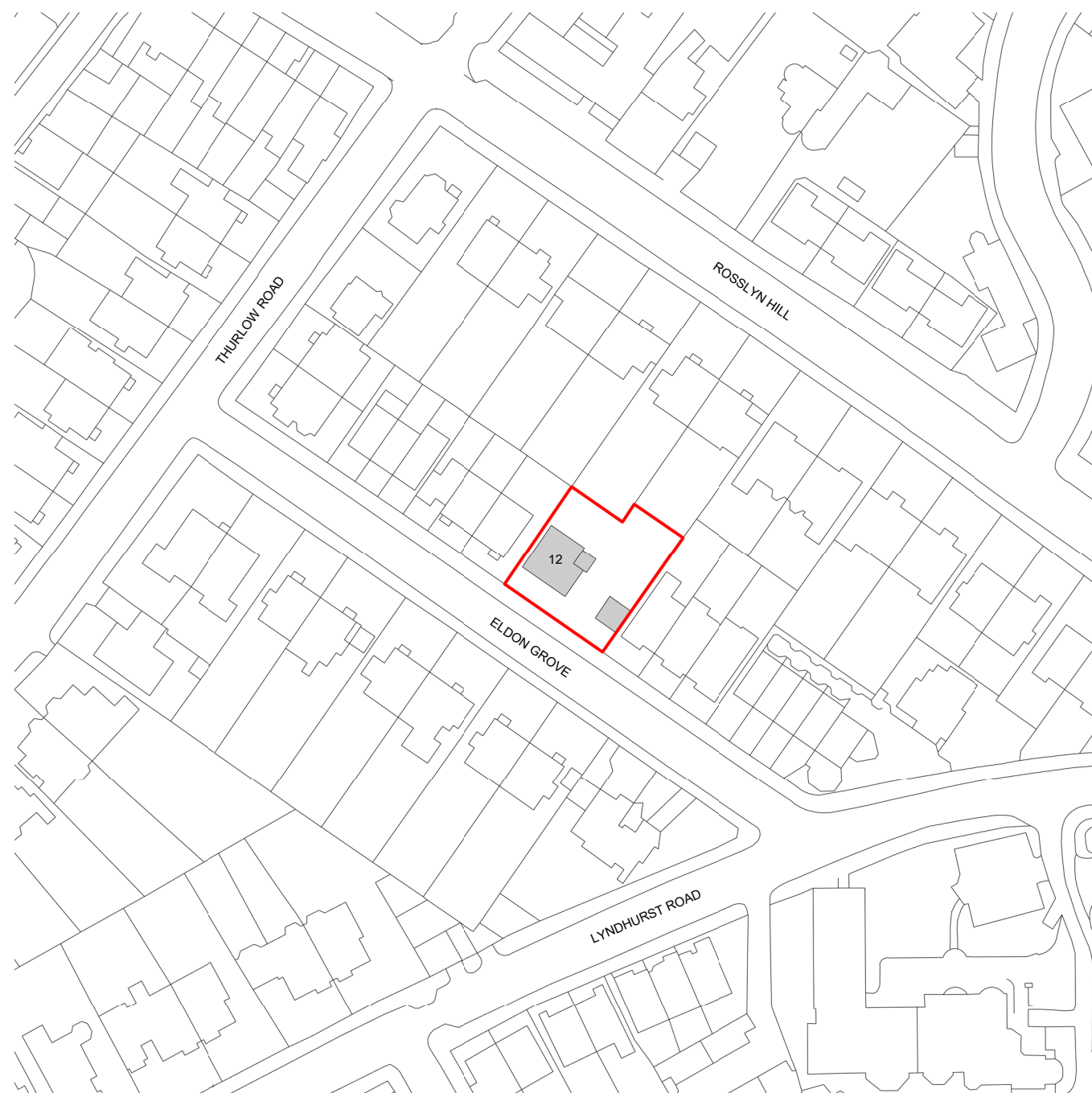


GENERAL NOTES:
This drawing is copyright of KSR architects.
This drawing must be read in conjunction with the Designer's Risk Assessment, specification and all other relevant documentation and drawings.
KSR architects accept no liability for any expense, loss or damage of whatsoever nature and however arising from any variation made to this drawing or in the execution of the work to which it relates which has not been referred to them and their approval obtained.
Areas are based on unchecked survey and are approximate only.
Do not scale from this drawing or the digital data, only figured dimensions are to be used. Refer to linear scale for guidance.
Check all dimensions on site prior to carrying out any works and advise any discrepancy



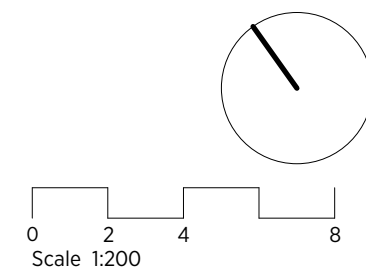
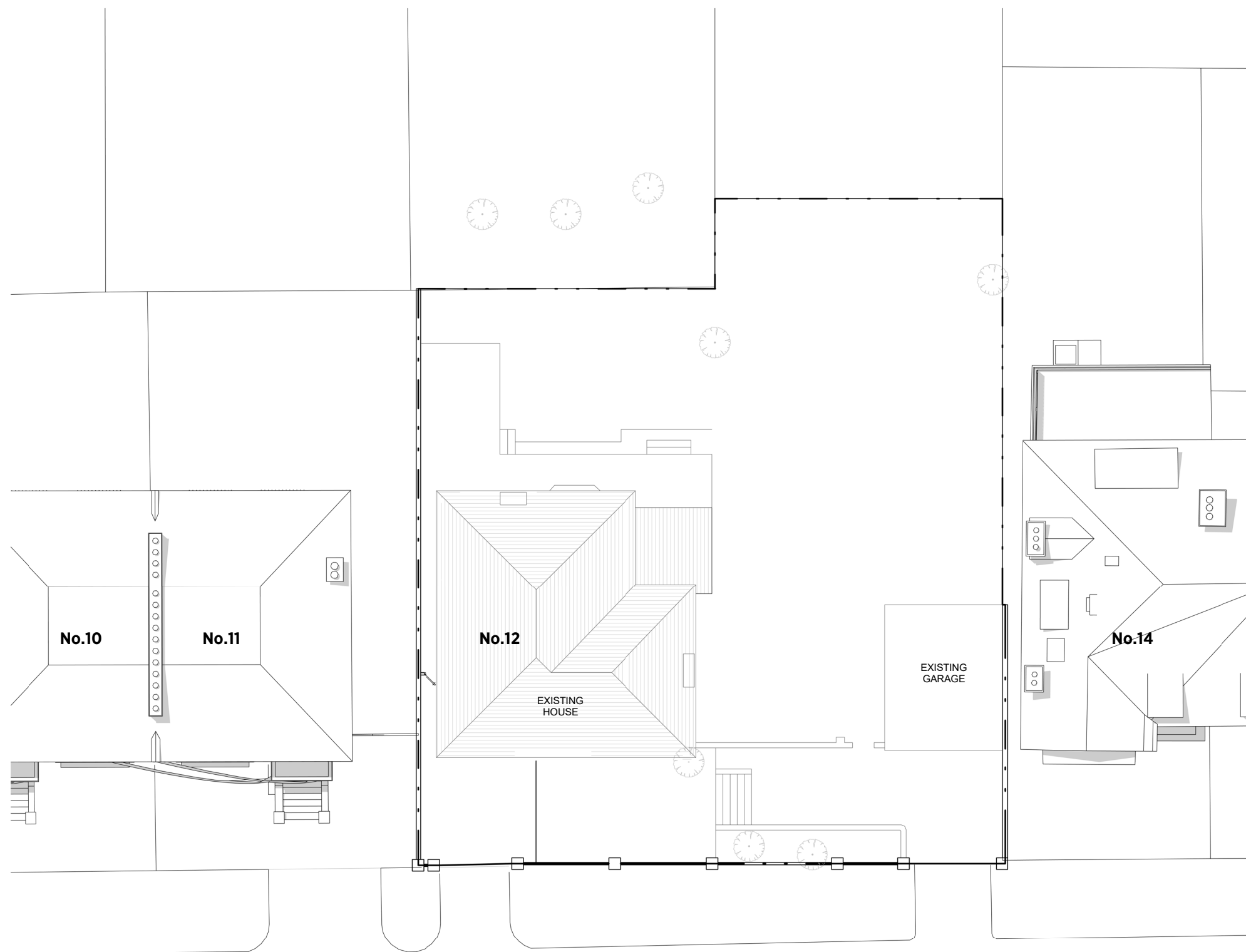
KSR ARCHITECTS & INTERIOR DESIGNERS
KSR Architects LLP mail@ksrarchitects.com
14 Greenland Street t: +44 (0)20 7692 5000
London NW1 0ND www.ksrarchitects.com

12-13 Eldon Grove

Location Plan

Date: 06/01/21	Status: PLANNING
Scale: 1:1250	© KSR Architects
Project Ref: 20012	Drawing No: E-001

GENERAL NOTES:
 This drawing is copyright of KSR architects.
 This drawing must be read in conjunction with the Designer's Risk Assessment, specification and all other relevant documentation and drawings.
 KSR architects accept no liability for any expense, loss or damage of whatsoever nature and however arising from any variation made to this drawing or in the execution of the work to which it relates which has not been referred to them and their approval obtained.
 Areas are based on unchecked survey and are approximate only.
 Do not scale from this drawing or the digital data, only figured dimensions are to be used. Refer to linear scale for guidance.
 Check all dimensions on site prior to carrying out any works and advise any discrepancy



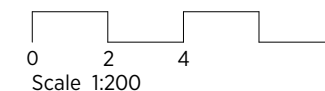
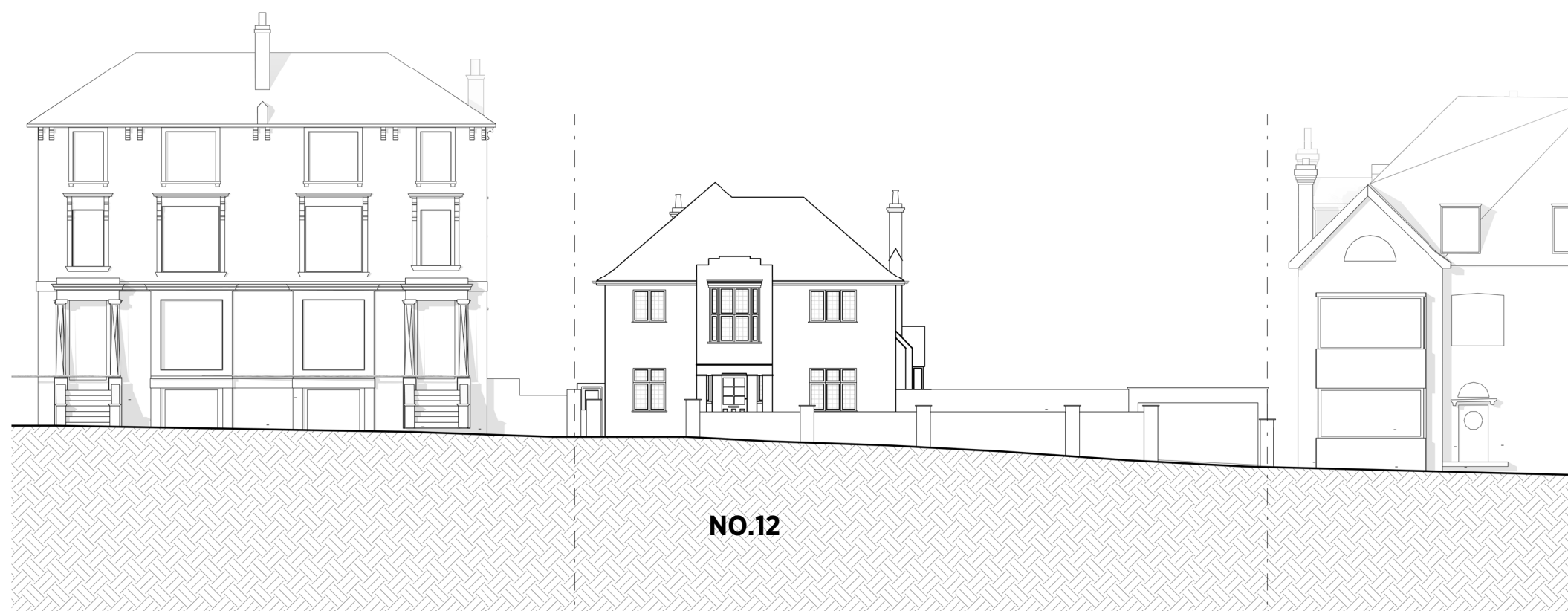
KSR ARCHITECTS & INTERIOR DESIGNERS
 KSR Architects LLP mail@ksrarchitects.com
 14 Greenland Street t: +44 (0)20 7692 5000
 London NW1 6ND www.ksrarchitects.com

12-13 Eldon Grove

Existing Site Plan

Date: 06/01/21	Status: PLANNING
Scale: 1:200 @ A3	© KSR Architects
Project Ref: 20012	Drawing No: E-002
	Revision:

GENERAL NOTES:
This drawing is copyright of KSR architects.
This drawing must be read in conjunction with the Designer's Risk Assessment, specification and all other relevant documentation and drawings.
KSR architects accept no liability for any expense, loss or damage of whatsoever nature and however arising from any variation made to this drawing or in the execution of the work to which it relates which has not been referred to them and their approval obtained.
Areas are based on unchecked survey and are approximate only.
Do not scale from this drawing or the digital data, only figured dimensions are to be used. Refer to linear scale for guidance.
Check all dimensions on site prior to carrying out any works and advise any discrepancy



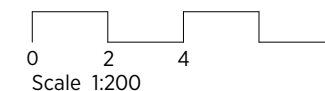
KSR ARCHITECTS & INTERIOR DESIGNERS
KSR Architects LLP mail@ksrarchitects.com
14 Greenland Street t: +44 (0)20 7692 5000
London NW1 0ND www.ksrarchitects.com

12-13 Eldon Grove

Existing Street Elevation

Date: 06/01/21	Status: PLANNING
Scale: 1:200 @ A3	© KSR Architects
Project Ref: 20012	Drawing No: E-003
	Revision:

GENERAL NOTES:
This drawing is copyright of KSR architects.
This drawing must be read in conjunction with the Designer's Risk Assessment, specification and all other relevant documentation and drawings.
KSR architects accept no liability for any expense, loss or damage of whatsoever nature and however arising from any variation made to this drawing or in the execution of the work to which it relates which has not been referred to them and their approval obtained.
Areas are based on unchecked survey and are approximate only.
Do not scale from this drawing or the digital data, only figured dimensions are to be used. Refer to linear scale for guidance.
Check all dimensions on site prior to carrying out any works and advise any discrepancy



KSR ARCHITECTS & INTERIOR DESIGNERS
KSR Architects LLP mail@ksrarchitects.com
14 Greenland Street t: +44 (0)20 7692 5000
London NW1 0ND www.ksrarchitects.com

12-13 Eldon Grove

Existing Rear Elevation

Date: 06/01/21	Status: PLANNING
Scale: 1:200 @ A3	© KSR Architects
Project Ref: 20012	Drawing No: E-004
	Revision: