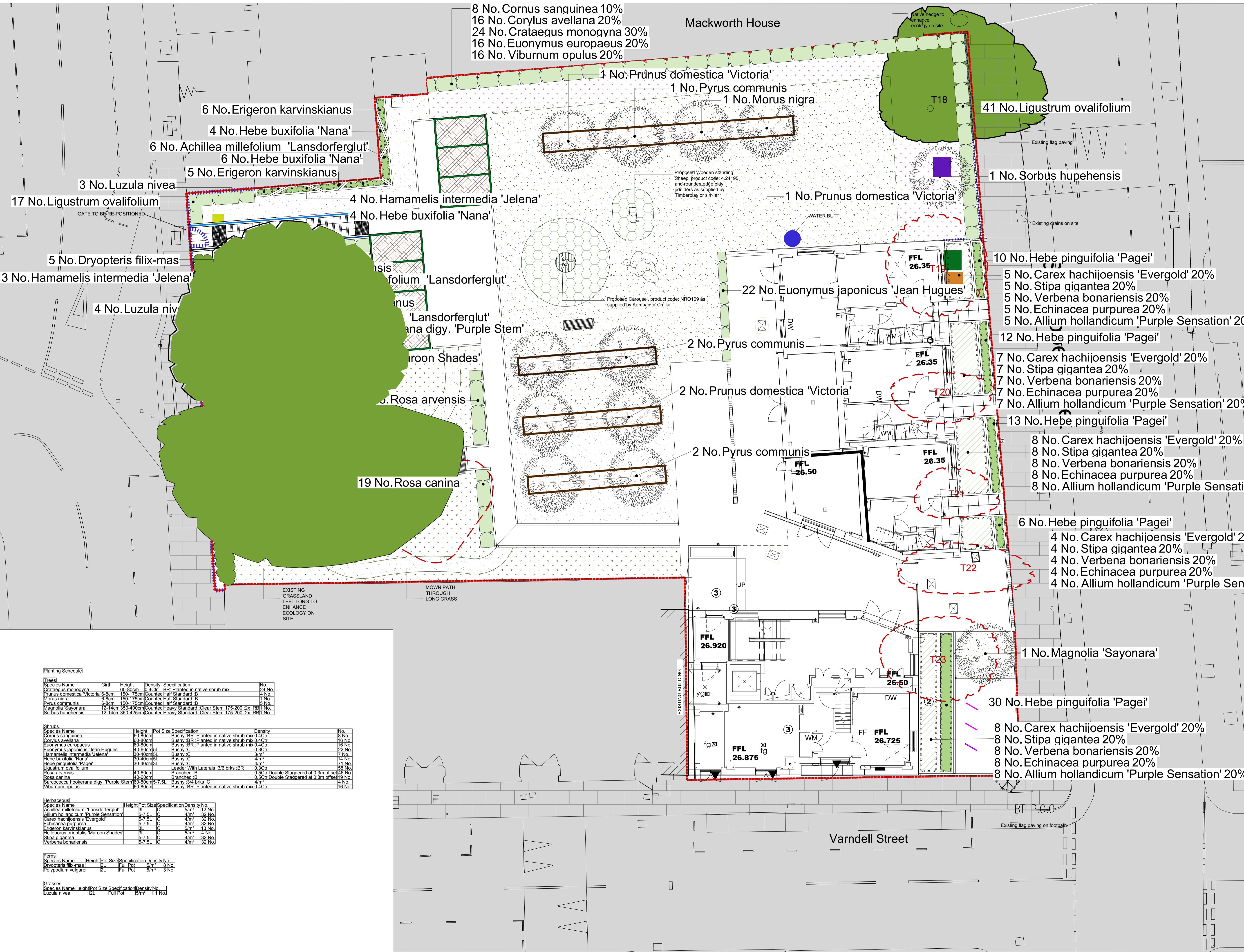


8 No. *Cornus sanguinea* 10%  
 16 No. *Corylus avellana* 20%  
 24 No. *Crataegus monogyna* 30%  
 16 No. *Euonymus europaeus* 20%  
 16 No. *Viburnum opulus* 20%

Mackworth House



Soft Landscape Legend

- Proposed site boundary
- Existing trees to be removed
- Existing trees to be retained and protected during construction
- Proposed tree planting within soft landscape. See detail
- Proposed shrub planting to receive 75mm bark mulch after planting operations
- Proposed hedge planting to be planted in a double staggered row 300mm apart and at 500mm centres in each row. To be maintained at 1m height
- Proposed mixed herbaceous planting to be planted in groups of 3-5no. of each species, and as above
- Proposed grass areas to receive good quality amenity grass turves laid in line with good horticultural practices
- Existing grassland to be retained and allowed to grow long. To be supplemented with EH1F Wild Flowers For Hedgerows mix. Sown at 5 grams per msq where there are bare patches in retained grass. Seed available from Emorsgate or similar. Tel: 01553 829028, www.wildseed.co.uk
- Proposed grassland areas, to be seeded with EM4 Meadow mixture for clay soils wild flower seed mix as supplied by Emorsgate seeds and sown at 5 grams per msq, or similar. To be maintained as long meadow grassland. Seed available from Emorsgate or similar. Tel: 01553 829028, www.wildseed.co.uk
- Proposed grassmats as supplied by Matta products or similar. To be installed in line with critical fall heights and ENBS1176 and ENBS1177
- Proposed 75mm depth of bark mulch for strips of orchard planting with timber board edging



| Rev | Date     | Details                                      | Drawn |
|-----|----------|--|-------|
| F   | 21.09.17 | Client Comments                              | CB    |
| E   | 19.09.17 | Client Comments                              | CB    |
| D   | 01.08.17 | Hedge added                                  | HC    |
| C   | 11.07.17 | Layout revisions in line with external works | HC    |
| B   | 15.04.16 | Client comments                              | JS    |
| A   | 25.02.16 | VE changes                                   | JS    |
| Rev | Date     | Details                                      | Drawn |



ACD ENVIRONMENTAL  
 HEAD OFFICE  
 Rodbourne Rail Business Centre, Grange Lane,  
 Malmesbury, SN16 0ES  
 Tel: 01666 825646  
 Courtyard House, Mill Lane, Godalming, GU7 1EY  
 Tel: 01483 425714  
 Suite 6, Crescent House, Yonge Close, Eastleigh, SO50 9SX  
 Tel: 02382 026300  
 9 Brownlow Road, Cambridge, CB4 3NC  
 Tel: 07825 868654  
 email: mail@acdenv.co.uk  
 www.acdenvironmental.co.uk

Lovell Partnerships Limited

scheme: Varndell Street,  
 Regents Park Estate  
 client: Lovell Homes  
 drawing: Soft Landscape Plan  
 date: JULY 2017  
 scale: 1:100@A1  
 drawing no: LOV20034-11F  
 drawn: AB/HG checked: JS

Copyright of ACD Environmental Ltd. All rights described in Chapter IV of the Copyright, Designs and Patents Act 1988 have been generally asserted. 2011. Copyright of this plan remains with ACD until all fees have been paid in full.

Planting Schedule

| Species Name                       | Grtn    | Height    | Density | Specification                            | No.    |
|------------------------------------|---------|-----------|---------|--|--------|
| <i>Crataegus monogyna</i>          | 80-80cm | 0.4Cr     | BR      | Planted in native shrub mix              | 24 No. |
| <i>Prunus domestica 'Victoria'</i> | 8-8cm   | 150-175cm | counted | Half Standard B                          | 4 No.  |
| <i>Morus nigra</i>                 | 8-8cm   | 150-175cm | counted | Half Standard B                          | 1 No.  |
| <i>Pyrus communis</i>              | 8-8cm   | 150-175cm | counted | Half Standard B                          | 5 No.  |
| <i>Magnolia 'Sayonara'</i>         | 12-14cm | 350-400cm | counted | Heavy Standard Clear Stem 175-200 2x RBT | 1 No.  |
| <i>Sorbus hupehensis</i>           | 12-14cm | 350-425cm | counted | Heavy Standard Clear Stem 175-200 2x RBT | 1 No.  |

| Species Name                                    | Height  | Pot Size | Specification        | Density                     | No.                                    |        |
|---|---------|----------|----------------------|-----------------------------|--|--------|
| <i>Cornus sanguinea</i>                         | 80-80cm | Bushy    | BR                   | Planted in native shrub mix | 8 No.                                  |        |
| <i>Corylus avellana</i>                         | 80-80cm | Bushy    | BR                   | Planted in native shrub mix | 4 Cr                                   |        |
| <i>Euonymus europaeus</i>                       | 80-80cm | Bushy    | BR                   | Planted in native shrub mix | 16 No.                                 |        |
| <i>Euonymus japonicus 'Jean Hugues'</i>         | 40-60cm | 5L       | Bushy                | C                           | 22 No.                                 |        |
| <i>Hamamelis intermedia 'Jelena'</i>            | 30-40cm | 5L       | Bushy                | C                           | 4 No.                                  |        |
| <i>Hebe buxifolia 'Nana'</i>                    | 30-40cm | 5L       | Bushy                | C                           | 14 No.                                 |        |
| <i>Hebe pinguifolia 'Pagei'</i>                 | 30-40cm | 3L       | Bushy                | C                           | 71 No.                                 |        |
| <i>Ligustrum ovalifolium</i>                    | 30-40cm | 3L       | leader with laterals | 3/6 brks BR                 | 98 No.                                 |        |
| <i>Rosa arvensis</i>                            | 40-60cm | 3L       | Branched             | B                           | 0.5 Cr Double Staggered at 0.3m offset |        |
| <i>Rosa canina</i>                              | 40-60cm | 3L       | Branched             | B                           | 0.5 Cr Double Staggered at 0.3m offset |        |
| <i>Sarcococca hookerana digy. 'Purple Stem'</i> | 60-80cm | 7.5L     | Bushy                | 3/4 brks C                  | 4 No.                                  |        |
| <i>Viburnum opulus</i>                          | 80-80cm | 4L       | Bushy                | BR                          | Planted in native shrub mix            | 16 No. |

| Species Name                                 | Height | Pot Size | Specification | Density          | No.    |
|--|--------|----------|---------------|------------------|--------|
| <i>Achillea millefolium 'Lansdorferglut'</i> | 3L     | C        |               | 5/m <sup>2</sup> | 12 No. |
| <i>Allium hollandicum 'Purple Sensation'</i> | 5.7 SL | C        |               | 4/m <sup>2</sup> | 32 No. |
| <i>Carex hachijoensis 'Evergold'</i>         | 5.7 SL | C        |               | 4/m <sup>2</sup> | 32 No. |
| <i>Echinacea purpurea</i>                    | 5.7 SL | C        |               | 4/m <sup>2</sup> | 32 No. |
| <i>Erigeron karvinskianus</i>                | 3L     | C        |               | 5/m <sup>2</sup> | 13 No. |
| <i>Helleborus orientalis 'Maroon Shades'</i> | 3L     | C        |               | 5/m <sup>2</sup> | 4 No.  |
| <i>Stipa gigantea</i>                        | 5.7 SL | C        |               | 4/m <sup>2</sup> | 32 No. |
| <i>Verbena bonariensis</i>                   | 5.7 SL | C        |               | 4/m <sup>2</sup> | 32 No. |

| Species Name                | Height | Pot Size | Specification    | Density | No. |
|-----------------------------|--------|----------|------------------|---------|-----|
| <i>Dryopteris filix-mas</i> | 2L     | Full Pot | 5/m <sup>2</sup> | 8 No.   |     |
| <i>Polypodium vulgare</i>   | 2L     | Full Pot | 5/m <sup>2</sup> | 8 No.   |     |

| Species Name        | Height | Pot Size | Specification    | Density | No. |
|---------------------|--------|----------|------------------|---------|-----|
| <i>Luzula nivea</i> | 2L     | Full Pot | 5/m <sup>2</sup> | 11 No.  |     |