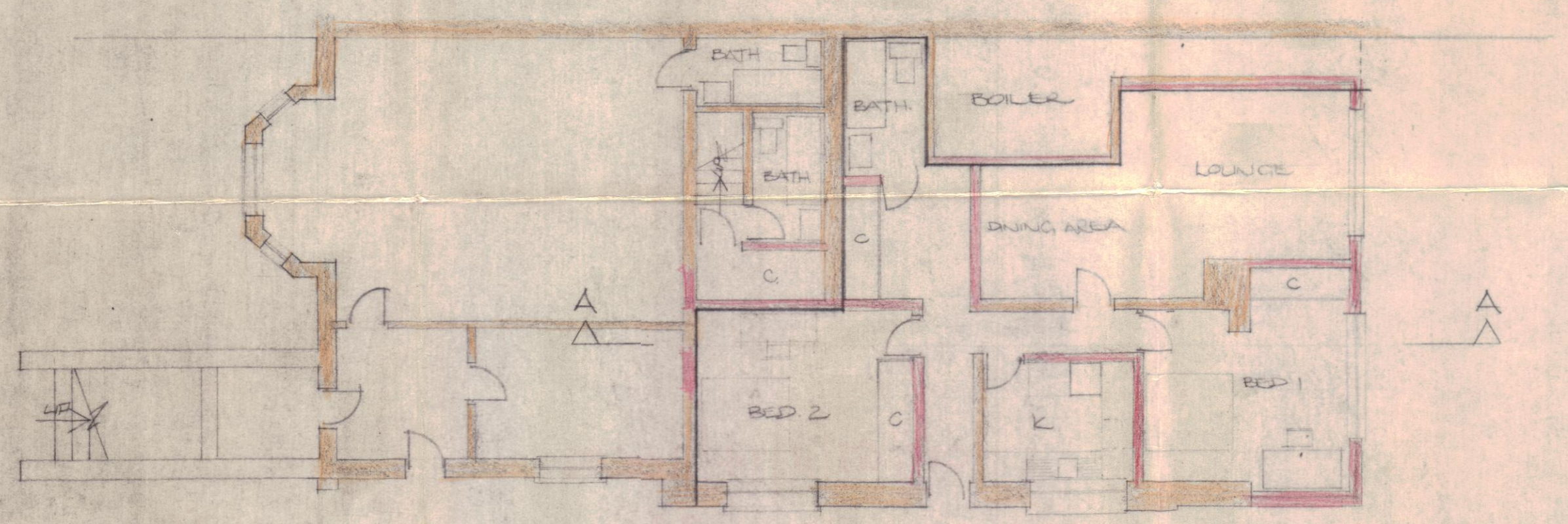
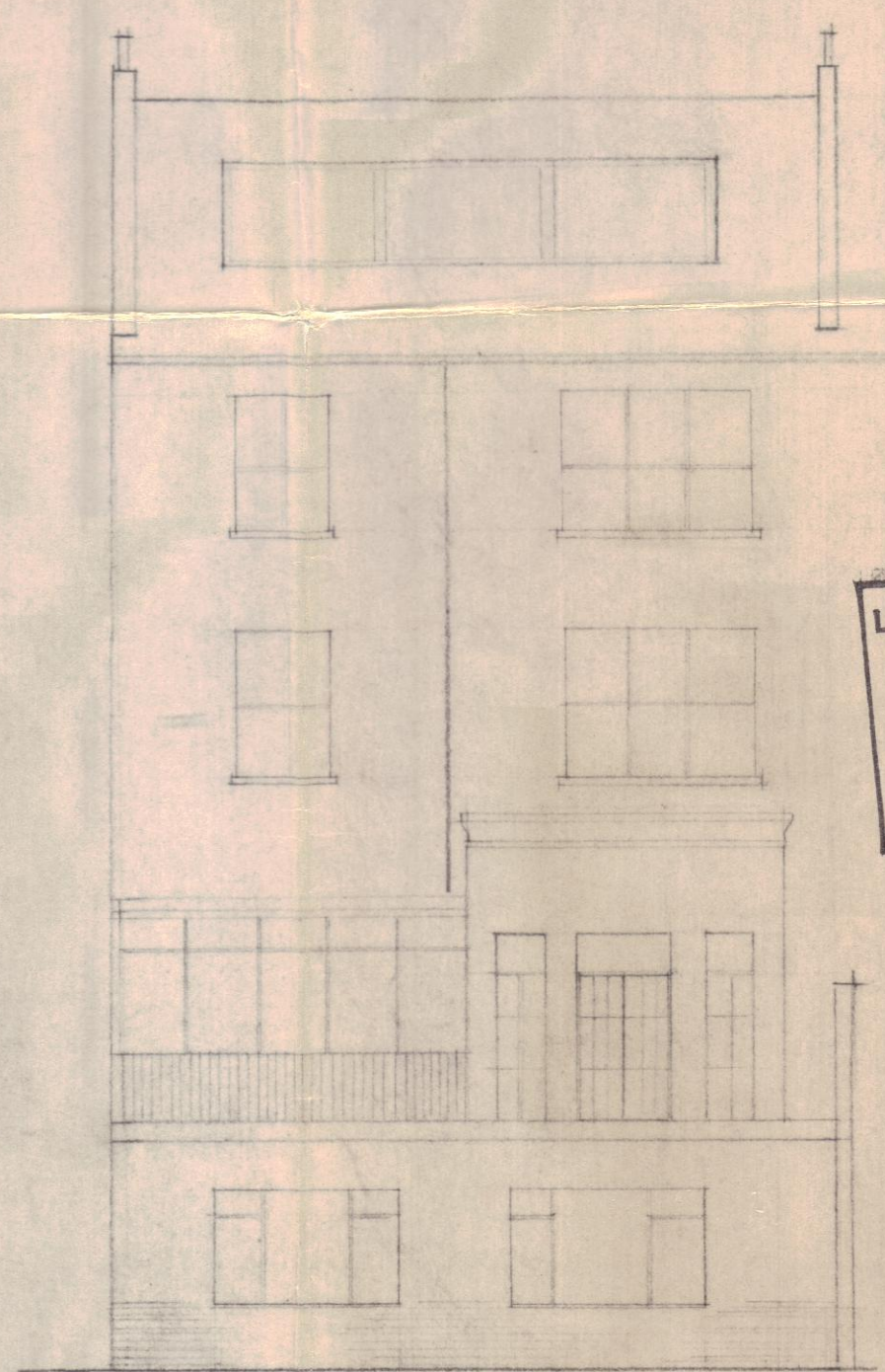


EXISTING PLAN ON BASEMENT

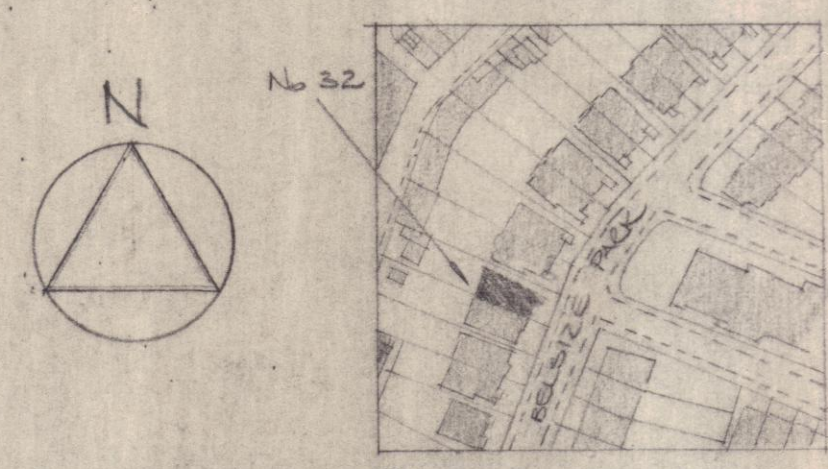


PROPOSED PLAN ON BASEMENT

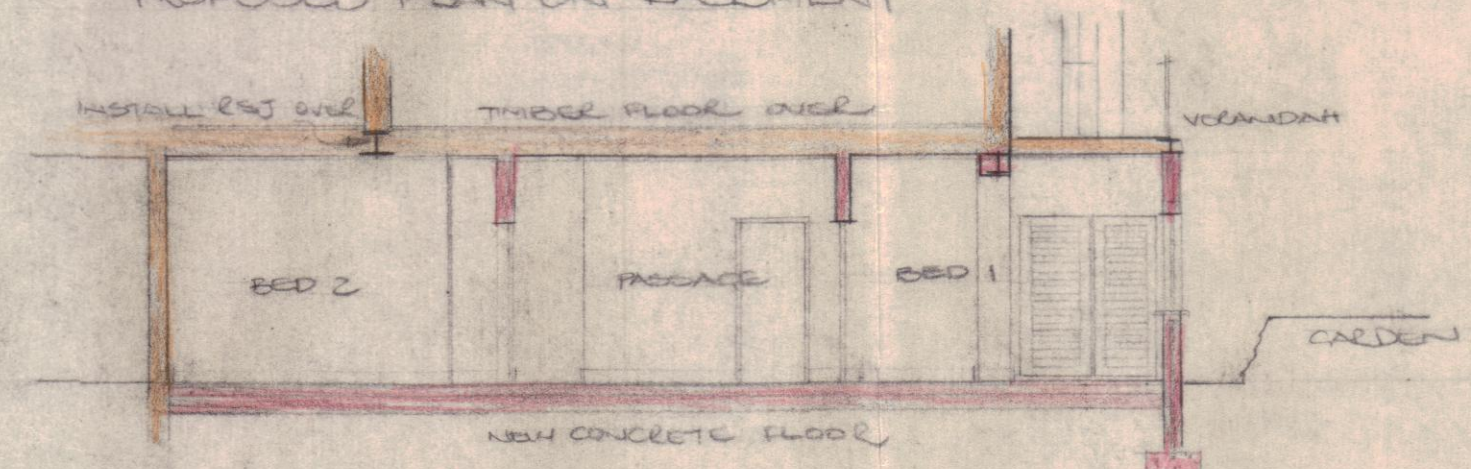


REAR ELEVATION

LONDON BOROUGH OF CAMDEN
 PLANS APPROVED
 27 APR 1971
 ON BEHALF OF THE COUNCIL



BLOCK PLAN
 SCALE 1:2500



SECTION A-A

CTP/G7/11/14/10536

PROPOSED CONVERSION TO FORM SELF-CONTAINED FLAT AT:
 No. 32 BELSIZE PARK LONDON NW3

SCALE: 1/8" TO 1'0"

DATE JAN 1971

H.J. BEBBINGTON
 8 SOUTH HILL MANSIONS
 SOUTH HILL PARK
 LONDON NW3
 402-6691