

NOTE

When this drawing is issued in uncontrolled CAD format it will be accompanied by a PDF version and is issued to enable the recipient to prepare their own documents / models / drawings for which they are solely responsible. The recipient should report all drawing errors, omissions and discrepancies to the architect. All dimensions should be checked on site by the contractor and such dimensions shall be the contractor's responsibility.

studio H A Limited accepts no responsibility or liability for:-

- any use of this drawing by parties other than the party for whom it was prepared or for purposes other than those for which it was prepared
- any alterations or additions to or discrepancies arising out of changes to the background information on which the drawings are based that was current at the time of issue, and which occur after it has been issued by sHA
- any loss or degradation of the information held in this drawing resulting from the translation from the original file format to any other file format or from the recipient's reading of it in any other programme or any version of the programme other than that which was used to prepare it
- the accuracy of survey information provided by others or for any costs, claims, proceedings and expenses arising out of reliance on such information
- any scaling from this drawing other than by the local planning authority solely for the purposes of the planning application to which it relates

KEY

ISSUED REVISIONS

REV	DATE	NOTES
01	22.02.20	Issued for information
02	10.03.20	Issued for information
03	16.03.20	Text updated
04	25.07.20	Text updated
05	15.10.20	Rear elevation window text updated to timber
06	28.11.20	Rear elevation window text updated to metal
07	07.01.21	Front elevation window text updated to refurbishment

CONSULTANTS	NAME
STRUCTURAL ENGINEER:	HEYNE TILLET STEEL LTD

LOCATION

studioHA 23 Drysdale Street
Shoreditch, London, N1 6ND

Job title
FLAT 2, 43 ROSSLYN HILL, HAMPSTEAD

drawing title / location
GROUND FLOOR PLAN - PROPOSED

scale
1:100@A3; 1:200@A4

status
PLANNING

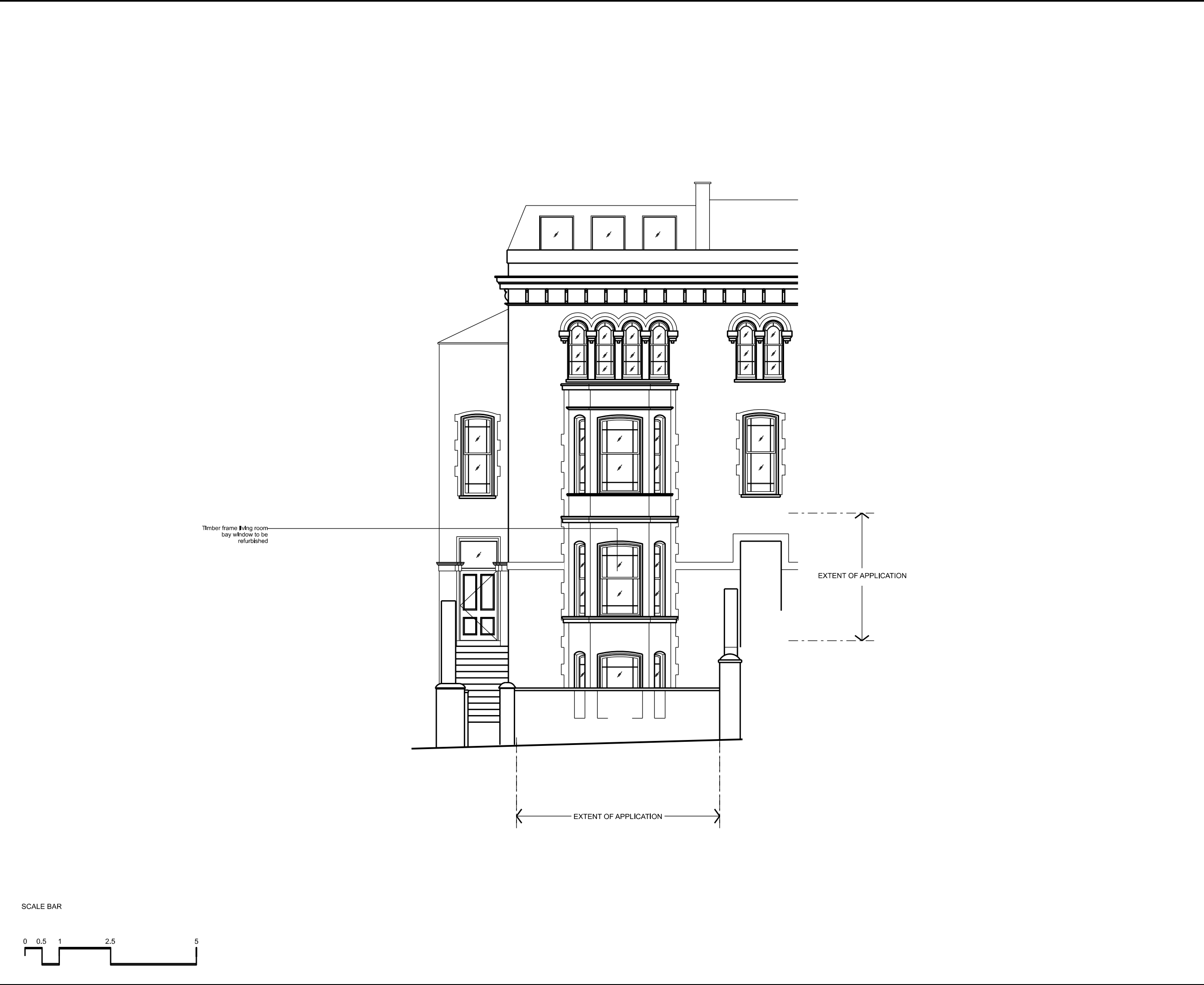
project
18001

source
A

drawing no.
P_00_100

revision
07

studioHA Ltd



NOTE

When this drawing is issued in uncontrolled CAD format it will be accompanied by a PDF version and is issued to enable the recipient to prepare their own documents / models / drawings for which they are solely responsible. The recipient should report all drawing errors, omissions and discrepancies to the architect. All dimensions should be checked on site by the contractor and such dimensions shall be the contractor's responsibility.

StudioHA Limited accepts no responsibility or liability for:-

- any use of this drawing by parties other than the party for whom it was prepared or for purposes other than those for which it was prepared
- any alterations or additions to or discrepancies arising out of changes to the background information on which the drawings are based that was current at the time of issue, and which occur to that information after it has been issued by AHMM
- any loss or degradation of the information held in this drawing resulting from the translation from the original file format to any other file format or from the recipient's reading of it in any other programme or any version of the programme other than that which was used to prepare it
- the accuracy of survey information provided by others or for any costs, claims, proceedings and expenses arising out of reliance on such information
- any scaling from this drawing other than by the local planning authority solely for the purposes of the planning application to which it relates

KEY

ISSUED REVISIONS

REV	DATE	NOTES
01	22.02.20	Issued for Information
02	16.03.20	Text updated
03	07.01.21	Text updated

CONSULTANTS	NAME
STRUCTURAL ENGINEER:	HEYNE TILLET STEEL LTD

LOCATION

studioHA 23 Drysdale Street
Shoreditch, London, N1 6ND

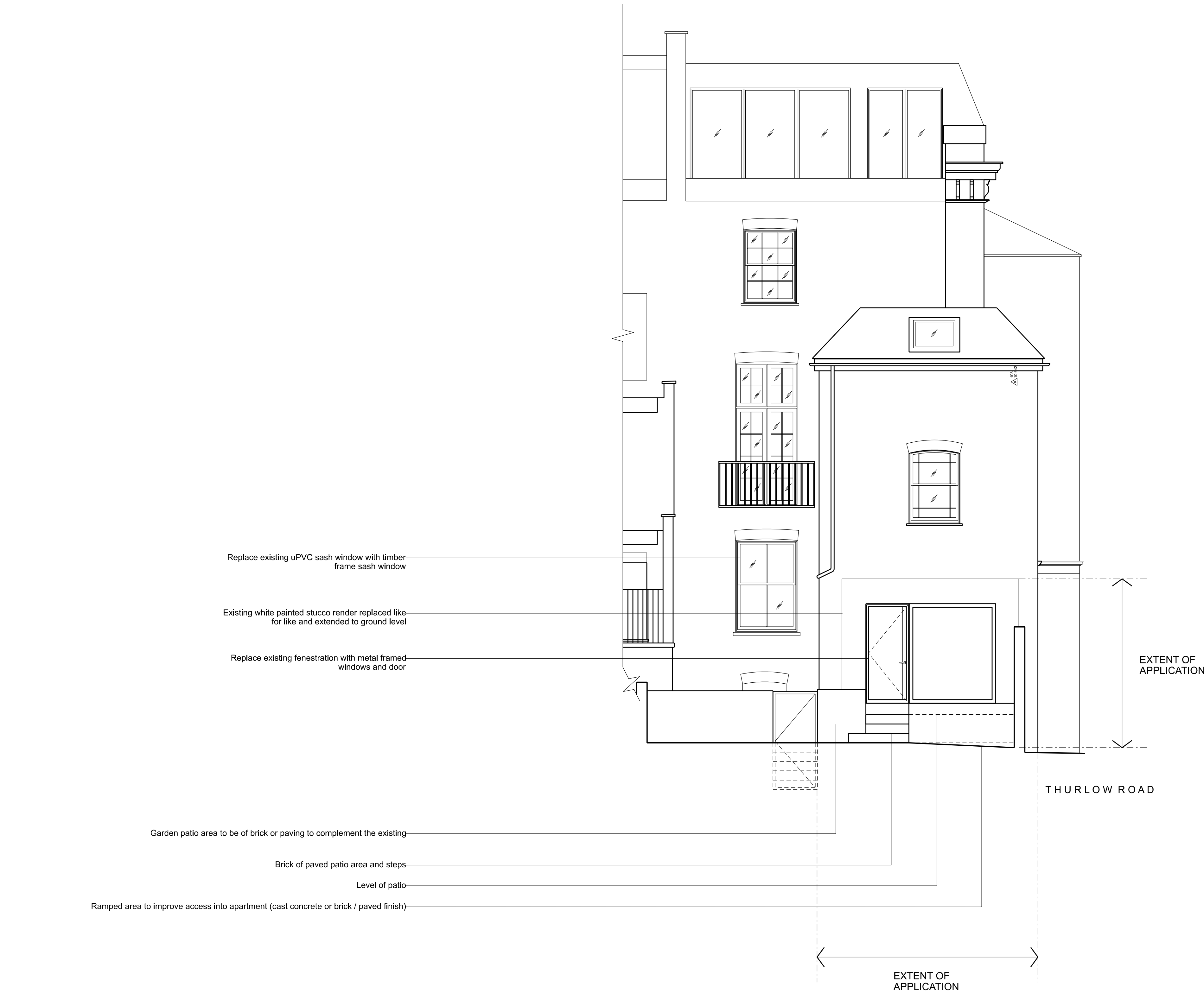
Job title
FLAT 2, 43 ROSSLYN HILL, HAMPSTEAD

Drawing title / location
NORTH ELEVATION - PROPOSED

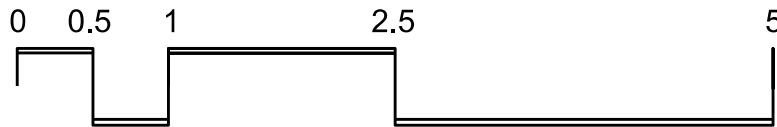
scale	status
1:100@A3; 1:200@A4	PLANNING

project	source	drawing no.	revision
18001	A	P_00_200	03

studioHA Ltd



SCALE BAR



NOTE

When this drawing is issued in uncontrolled CAD format it will be accompanied by a PDF version and is issued to enable the recipient to prepare their own documents / models / drawings for which they are solely responsible.

The recipient should report all drawing errors, omissions and discrepancies to the architect. All dimensions should be checked on site by the contractor and such dimensions shall be the contractor's responsibility.

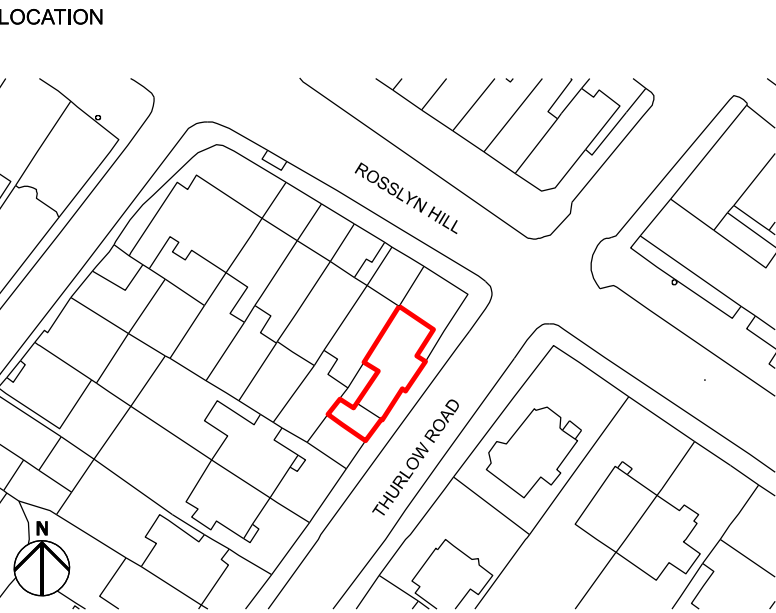
studio H A Limited accepts no responsibility or liability for:-

- any use of this drawing by parties other than the party for whom it was prepared or for purposes other than those for which it was prepared
- any alterations or additions to or discrepancies arising out of changes to the background information on which the drawings are based that was current at the time of issue, and which occur to that information after it has been issued by sHA
- any loss or degradation of the information held in this drawing resulting from the translation from the original file format to any other file format or from the recipients reading of it in any other programme or any version of the programme other than that which was used to prepare it
- the accuracy of survey information provided by others or for any costs, claims, proceedings and expenses arising out of reliance on such information
- any scaling from this drawing other than by the local planning authority solely for the purposes of the planning application to which it relates

KEY

ISSUED REVISIONS		
REV	DATE	NOTES
01	22.02.20	Issued for information
02	16.03.20	Text updated
03	15.10.20	Rear elevation window text updated to timber
04	28.11.20	Text updated
05	11.01.21	Text updated

CONSULTANTS	NAME
STRUCTURAL ENGINEER:	HEYNE TILLET STEEL LTD



studioHA 23 Drysdale Street
Shoreditch, London, N1 6ND

job title
FLAT 2, 43 ROSSLYN HILL, HAMPSTEAD

drawing title / location
SOUTH ELEVATION - PROPOSED

scale
1:100@A3; 1:200@A4

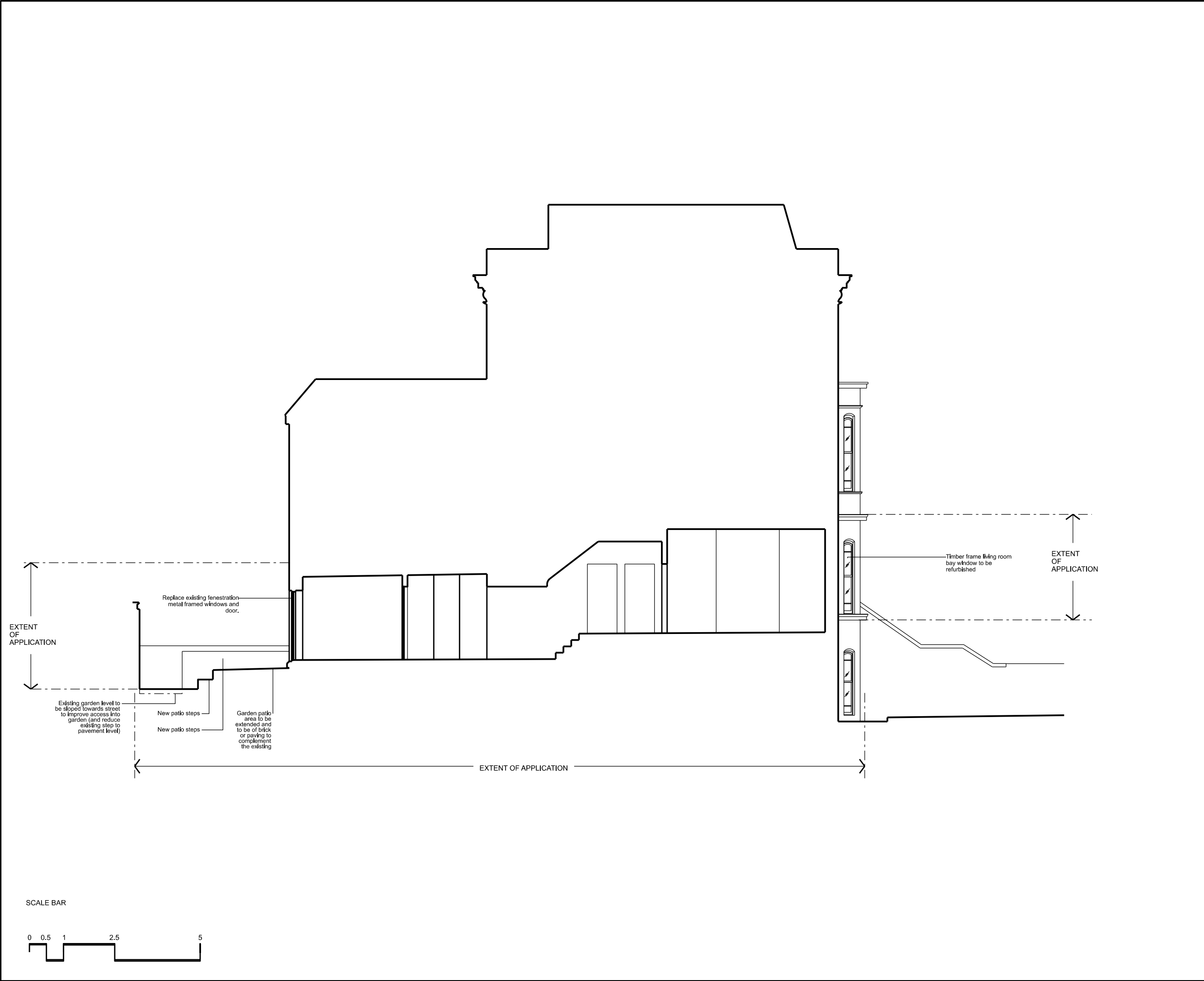
status
PLANNING

project
18001

source
A

drawing no.
P_00_201

revision
05



NOTE

When this drawing is issued in uncontrolled CAD format it will be accompanied by a PDF version and is issued to enable the recipient to prepare their own documents / models / drawings for which they are solely responsible. The recipient should report all drawing errors, omissions and discrepancies to the architect. All dimensions should be checked on site by the contractor and such dimensions shall be the contractor's responsibility.

studio H A Limited accepts no responsibility or liability for:-

- any use of this drawing by parties other than the party for whom it was prepared or for purposes other than those for which it was prepared
- any alterations or additions to or discrepancies arising out of changes to the background information on which the drawings are based that was current at the time of issue, and which occur to that information after it has been issued by sHA
- any loss or degradation of the information held in this drawing resulting from the translation from the original file format to any other file format or from the recipient's reading of it in any other programme or any version of the programme other than that which was used to prepare it
- the accuracy of survey information provided by others or for any costs, claims, proceedings and expenses arising out of reliance on such information
- any scaling from this drawing other than by the local planning authority solely for the purposes of the planning application to which it relates

KEY

ISSUED REVISIONS

REV	DATE	NOTES
01	22.02.20	Issued for Information
02	16.03.20	Text updated
03	15.10.20	Rear elevation window text updated to timber
04	28.11.20	Section updated to cut through patio stairs
05	07.01.21	Text updated

CONSULTANTS	NAME
STRUCTURAL ENGINEER:	HEYNE TILLET STEEL LTD

LOCATION

studioHA 23 Drysdale Street
Shoreditch, London, N1 6ND

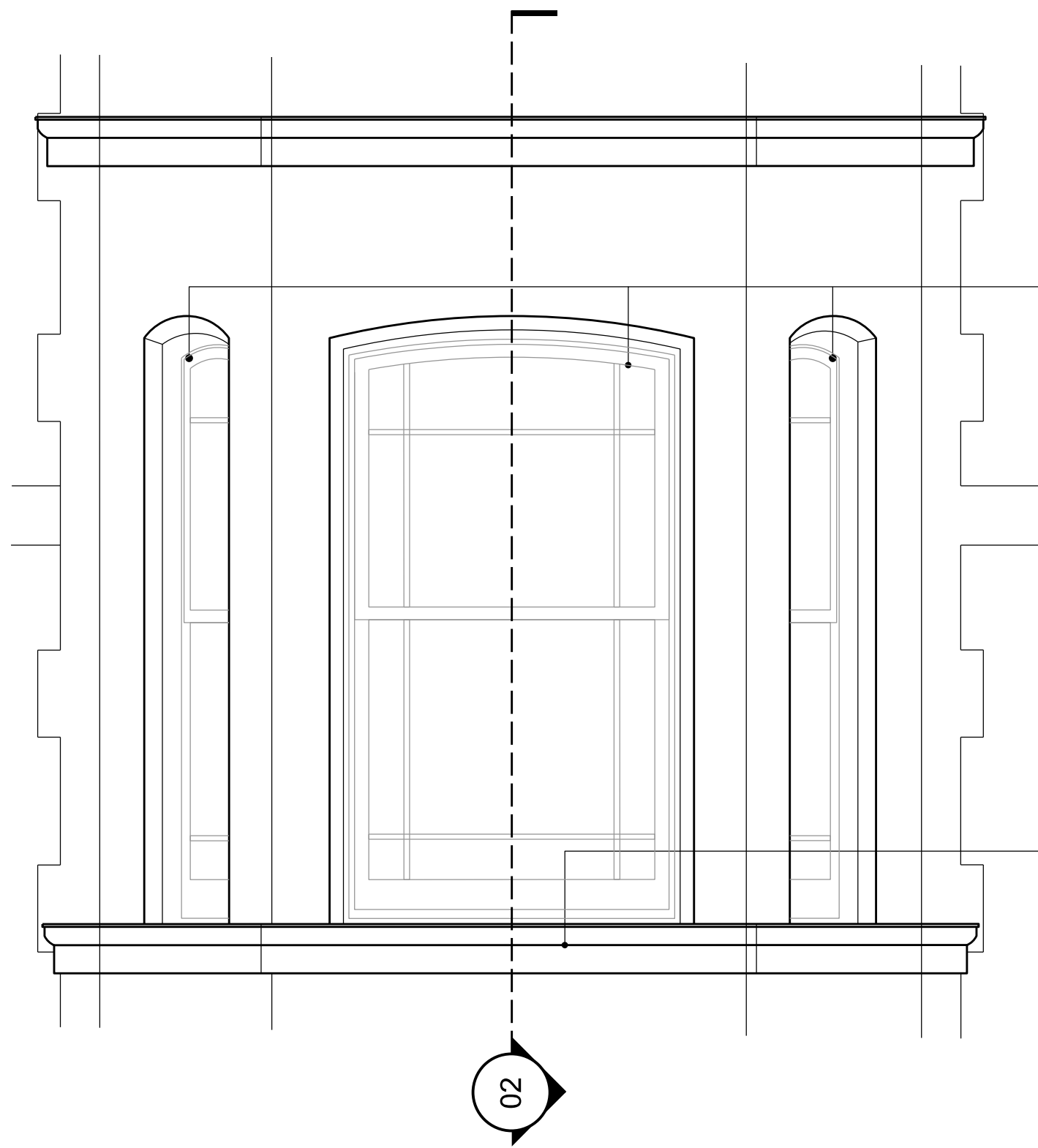
Job title
FLAT 2, 43 ROSSLYN HILL, HAMPSTEAD

drawing title / location
SECTION A -A PROPOSED

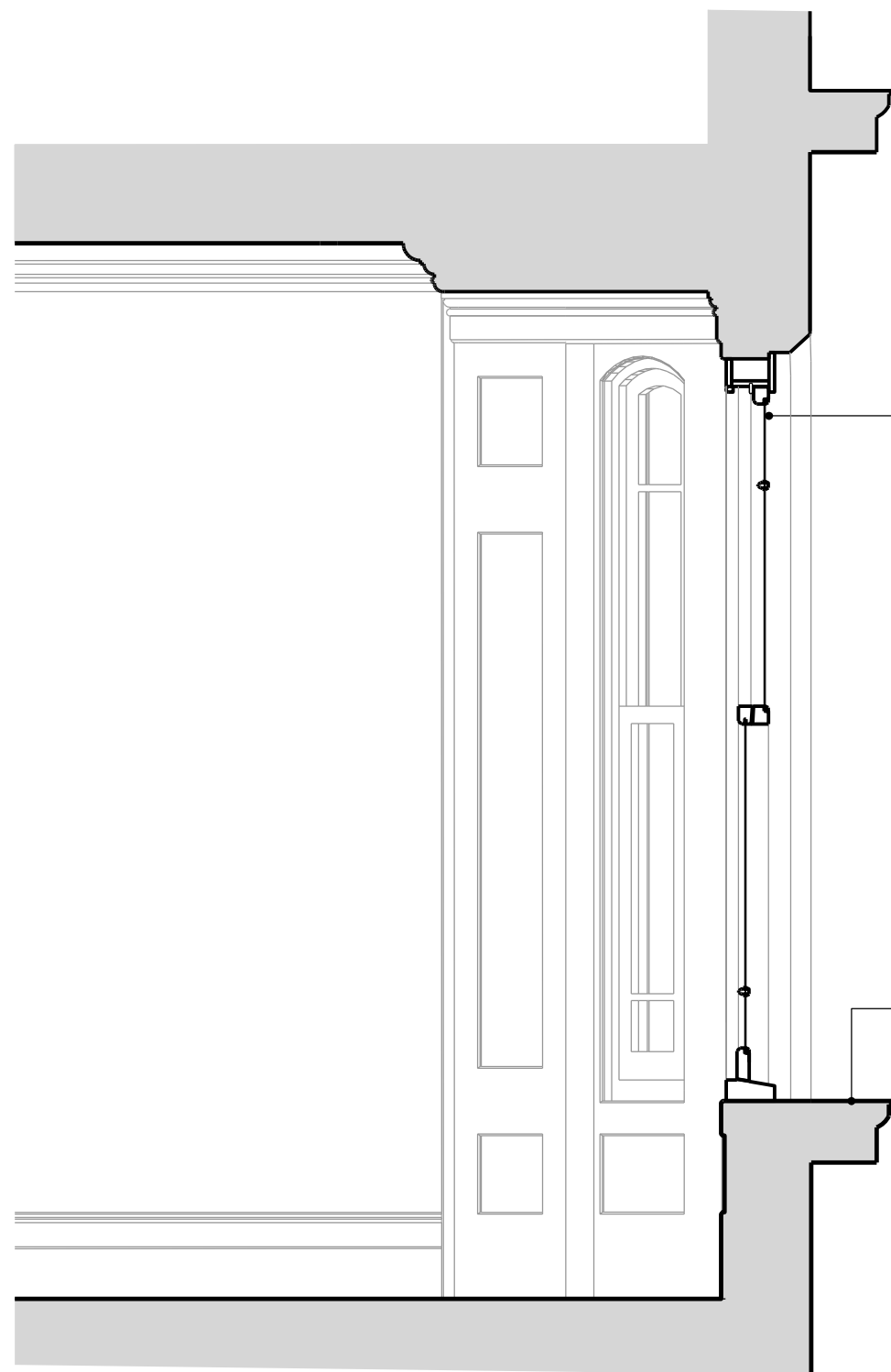
scale	status
1:100@A3; 1:200@A4	PLANNING

project	source	drawing no.	revision
18001	A	P_00_300	05

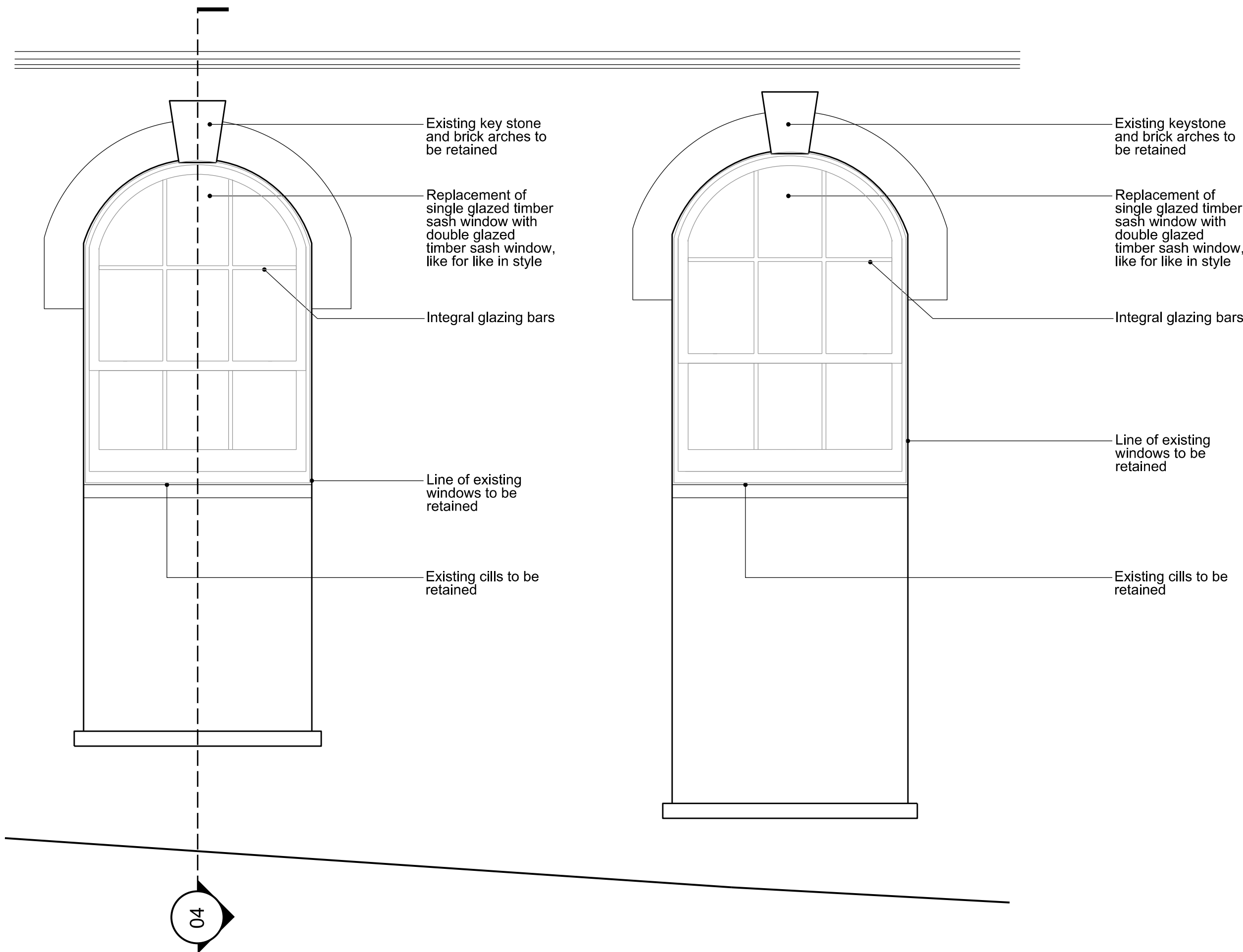
studioHA Ltd



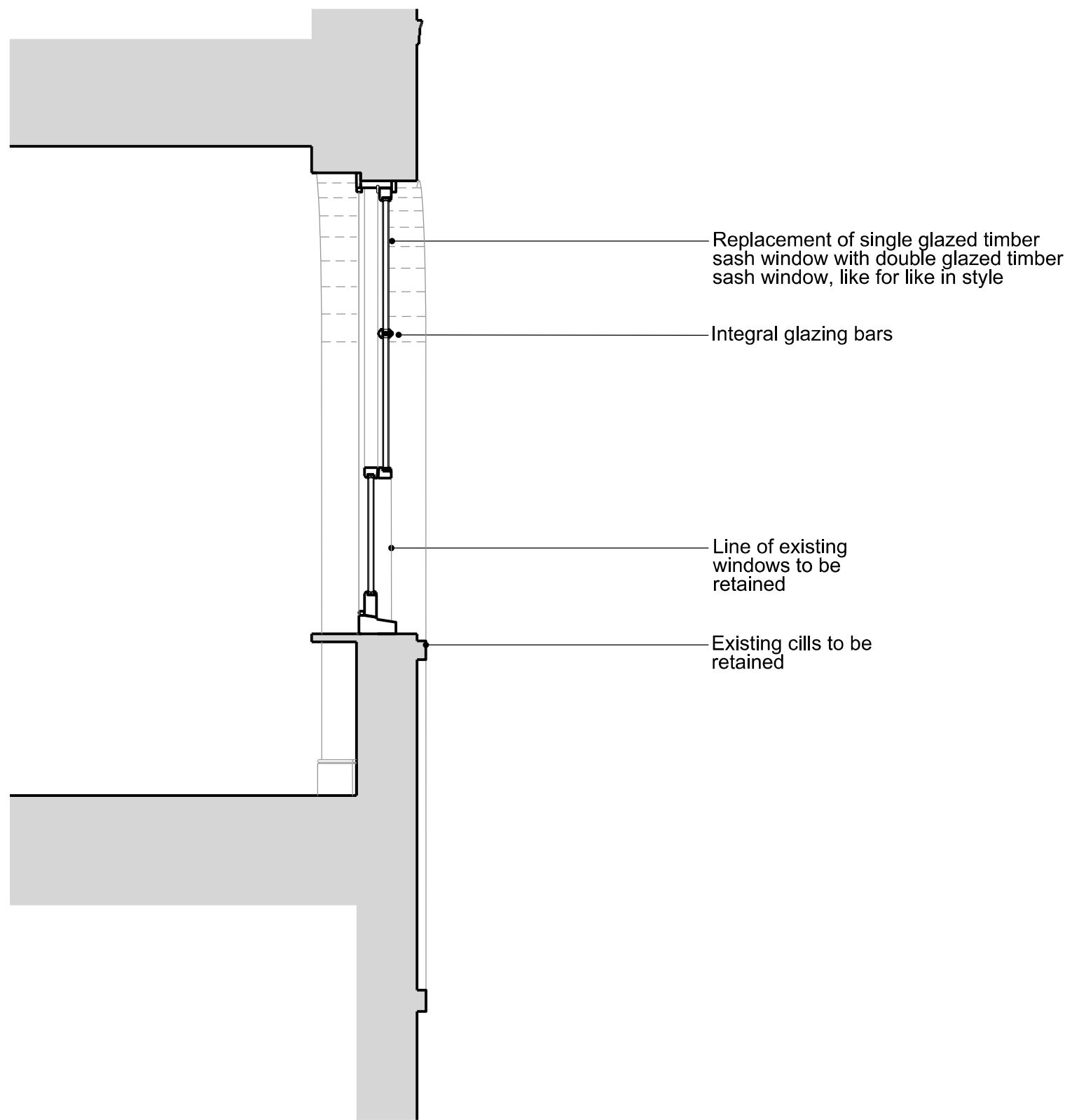
01 NORTH ELEVATION - REFURBISHMENT OF TIMBER SASH BAY WINDOWS



02 SECTION THROUGH NORTH ELEVATION WINDOW



03 EAST ELEVATION - REPLACEMENT OF NO.2 ARCHED TIMBER SASH WINDOWS LIKE FOR LIKE IN STYLE



04 SECTION THROUGH EAST ELEVATION WINDOWS

NOTE

When this drawing is issued in uncontrolled CAD format it will be accompanied by a PDF version and is issued to enable the recipient to prepare their own documents / models / drawings for which they are solely responsible.

The recipient should report all drawing errors, omissions and discrepancies to the architect. All dimensions should be checked on site by the contractor and such dimensions shall be the contractor's responsibility.

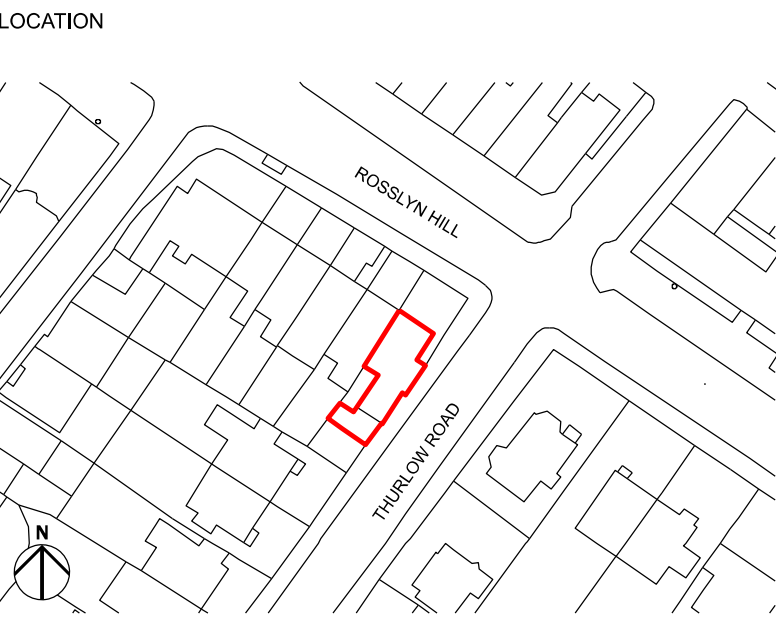
studio H A Limited accepts no responsibility or liability for:-

- any use of this drawing by parties other than the party for whom it was prepared or for purposes other than those for which it was prepared
- any alterations or additions to or discrepancies arising out of changes to the background information on which the drawings are based that was current at the time of issue, and which occur to that information after it has been issued by studio H A
- any loss or degradation of the information held in this drawing resulting from the translation from the original file format to any other file format or from the recipient's reading of it in any other programme or any version of the programme other than that which was used to prepare it
- the accuracy of survey information provided by others or for any costs, claims, proceedings and expenses arising out of reliance on such information
- any scaling from this drawing other than by the local planning authority solely for the purposes of the planning application to which it relates

NOTES

ISSUED REVISIONS		
REV	DATE	NOTES
P01	23.11.20	For PLANNING
P02	27.11.20	For PLANNING
P03	07.01.21	For PLANNING

CONSULTANTS	NAME
STRUCTURAL ENGINEER:	HEYNE TILLET STEEL LTD



studio H A 23 Drysdale Street
Shoreditch, London, N1 6ND

Job title
FLAT 2, 43 ROSSLYN HILL, HAMPSTEAD

drawing title / location
WINDOW DETAILS 01 - PROPOSED

scale
1:20@A1

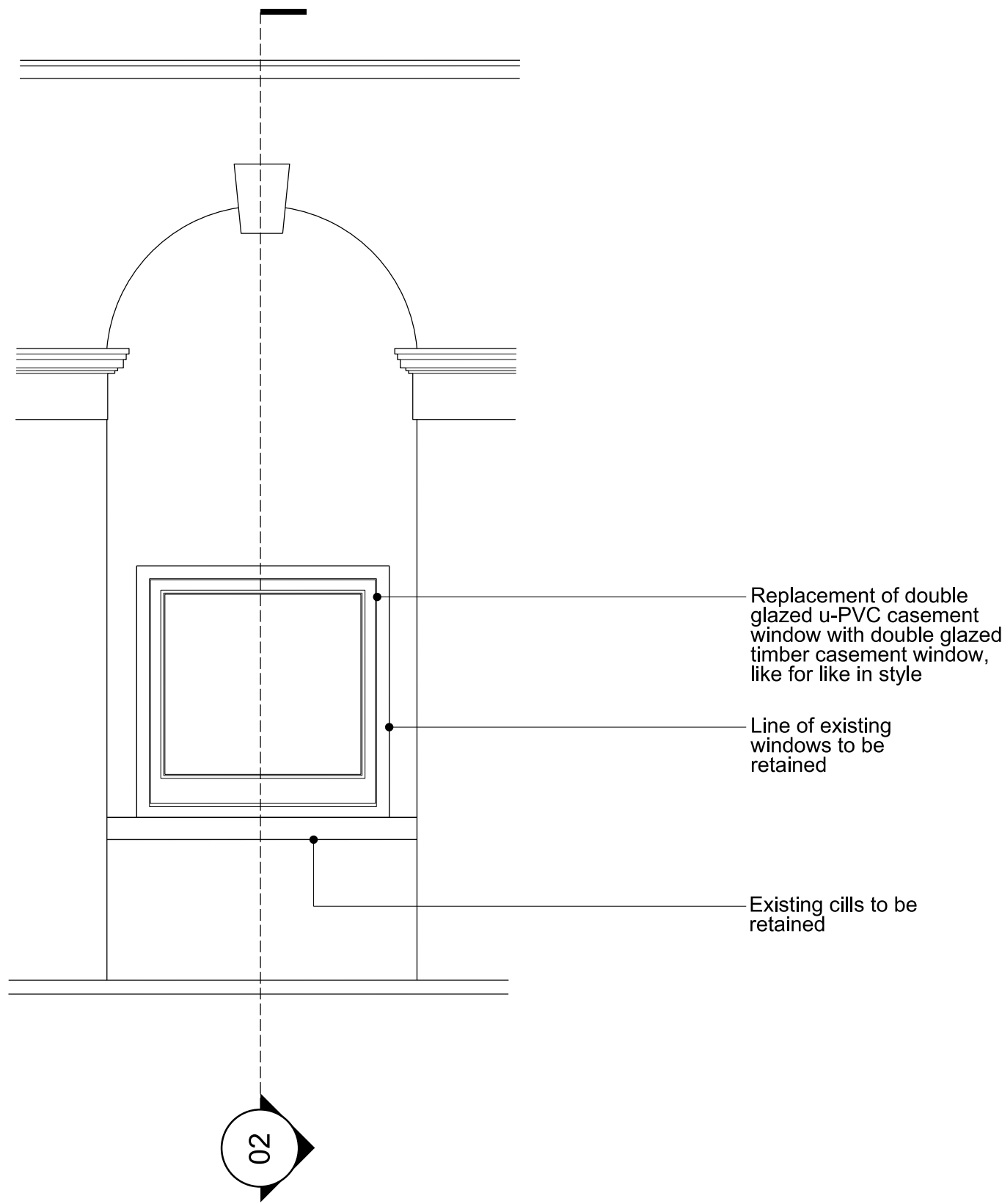
status
PLANNING

project
18001

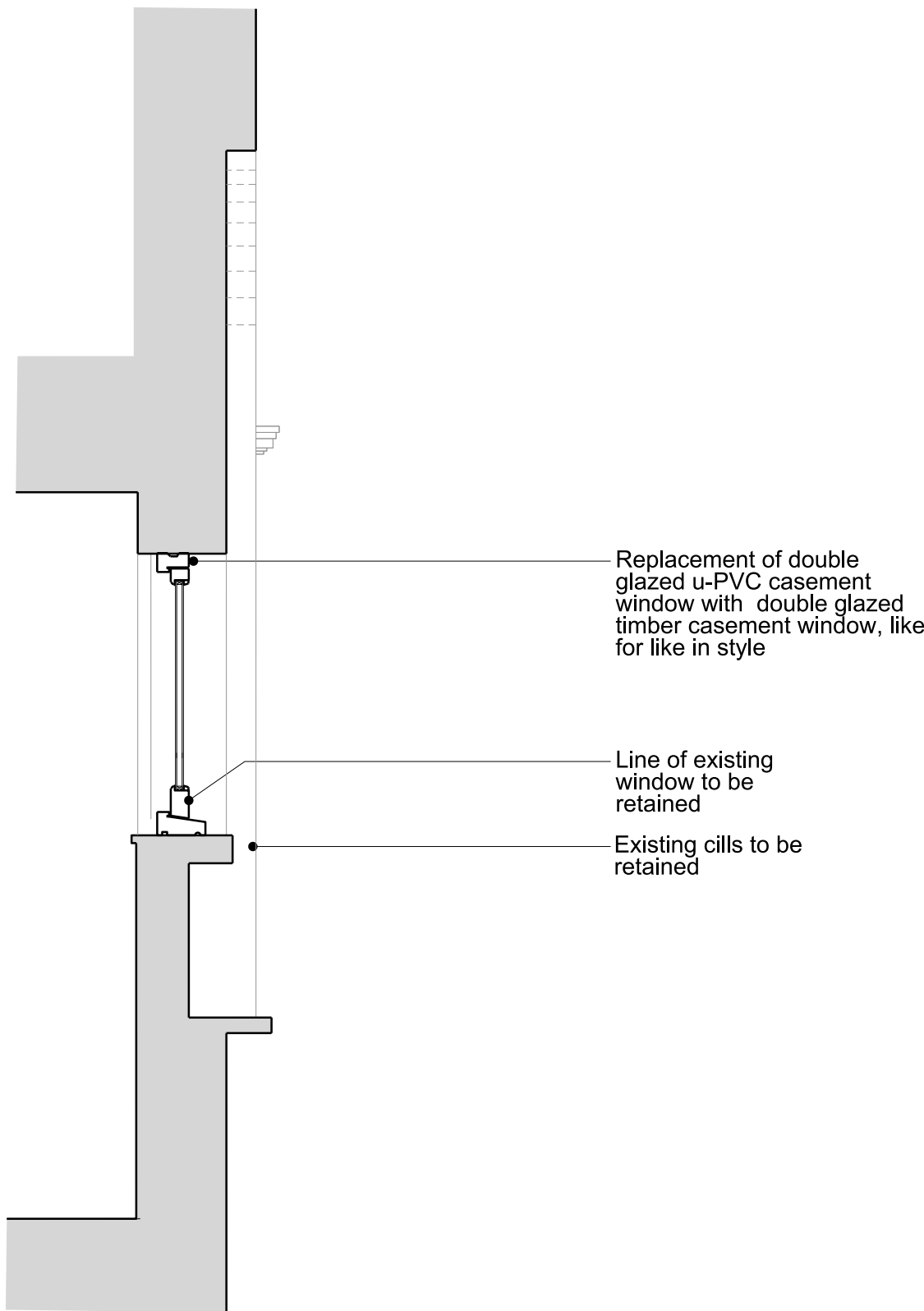
source
P

drawing no.
00_400

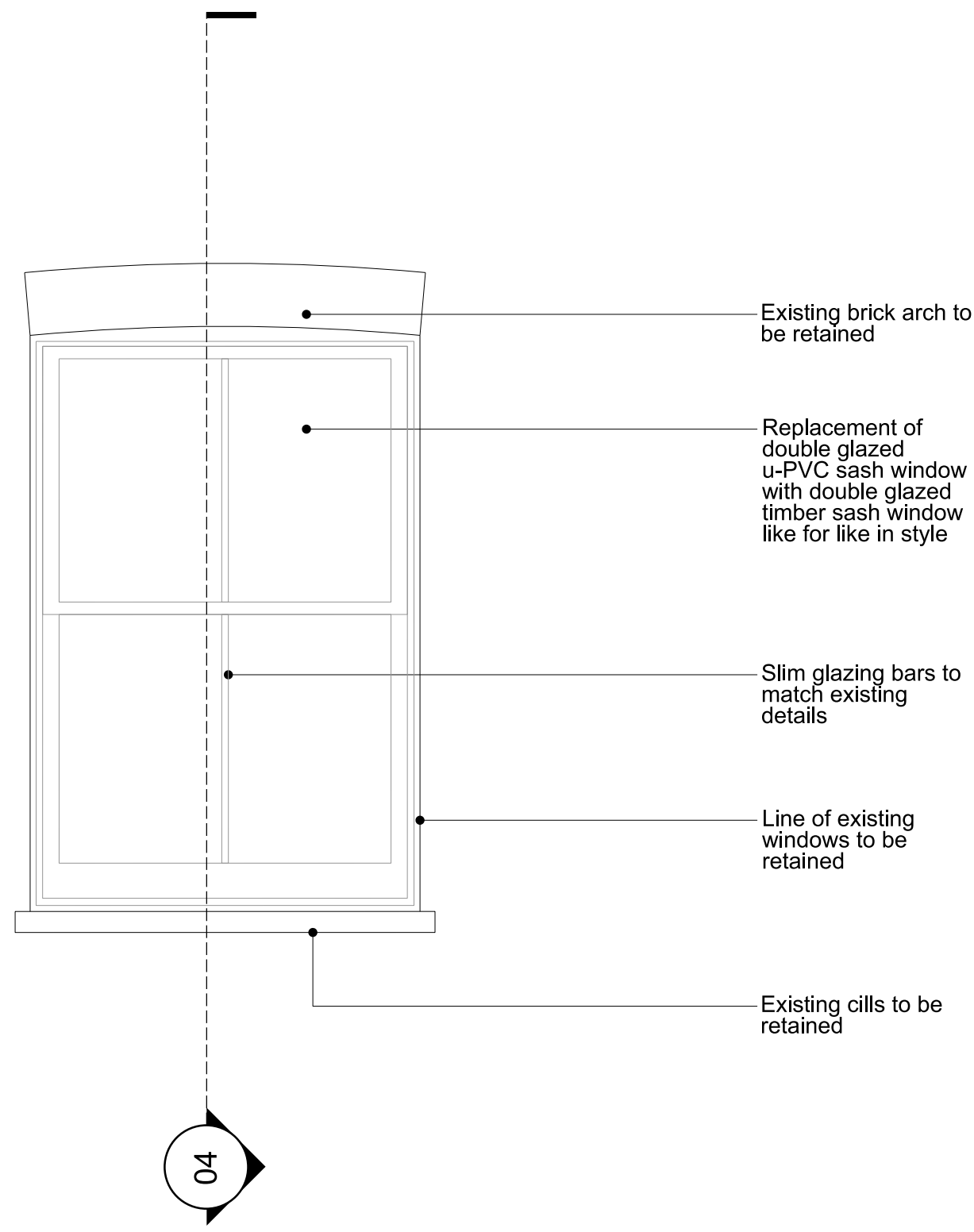
revision
P03



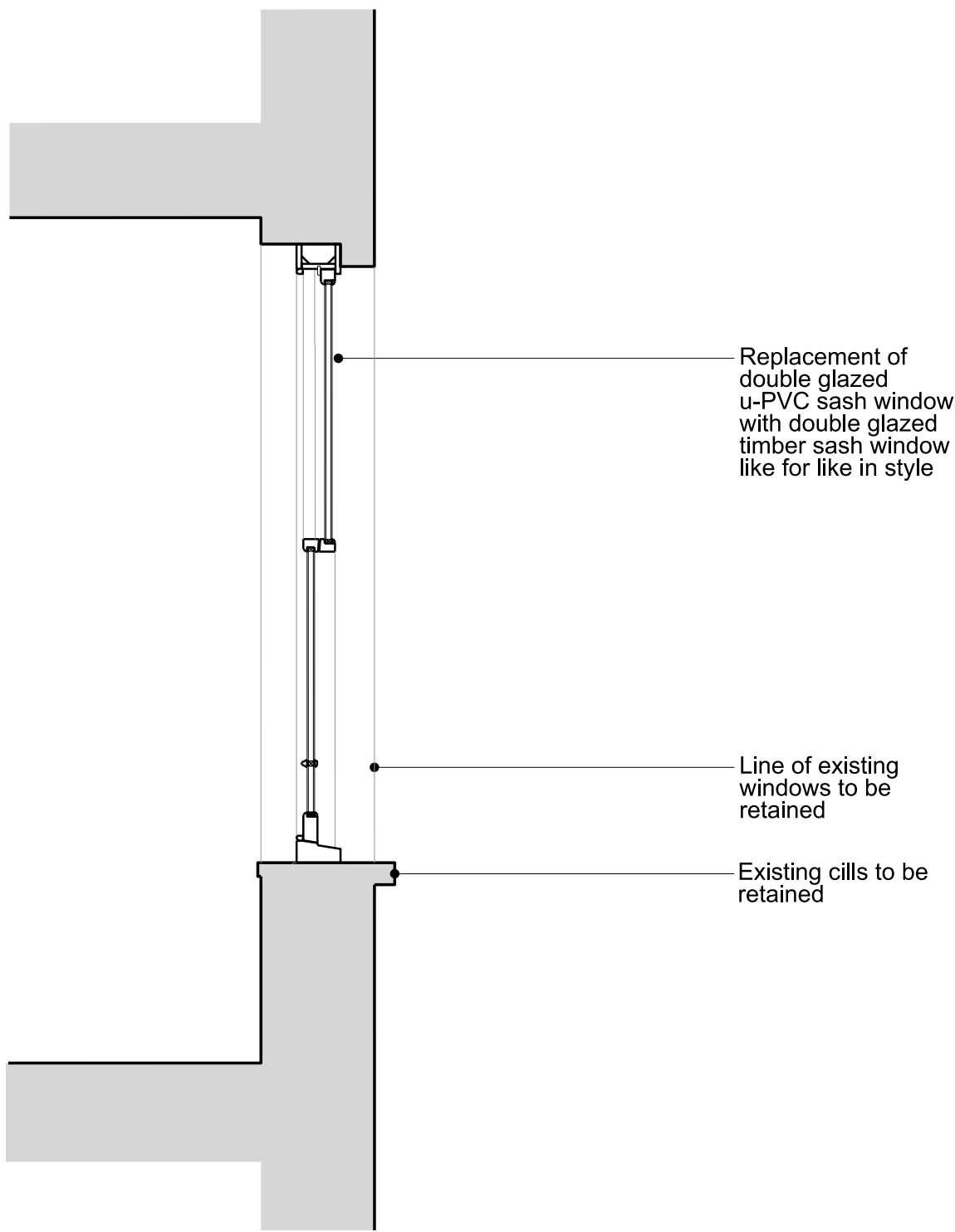
01 EAST ELEVATION - REPLACEMENT OF U-PVC CASEMENT WINDOW WITH TIMBER FRAME CASEMENT WINDOW LIKE FOR LIKE IN STYLE



02 SECTION THROUGH EAST ELEVATION WINDOW



03 SOUTH ELEVATION - REPLACEMENT U-PVC SASH WINDOW WITH TIMBER FRAME SASH WINDOW LIKE FOR LIKE IN STYLE



04 SECTION THROUGH SOUTH ELEVATION WINDOW

NOTE

When this drawing is issued in uncontrolled CAD format it will be accompanied by a PDF version and is issued to enable the recipient to prepare their own documents / models / drawings for which they are solely responsible.

The recipient should report all drawing errors, omissions and discrepancies to the architect. All dimensions should be checked on site by the contractor and such dimensions shall be the contractor's responsibility.

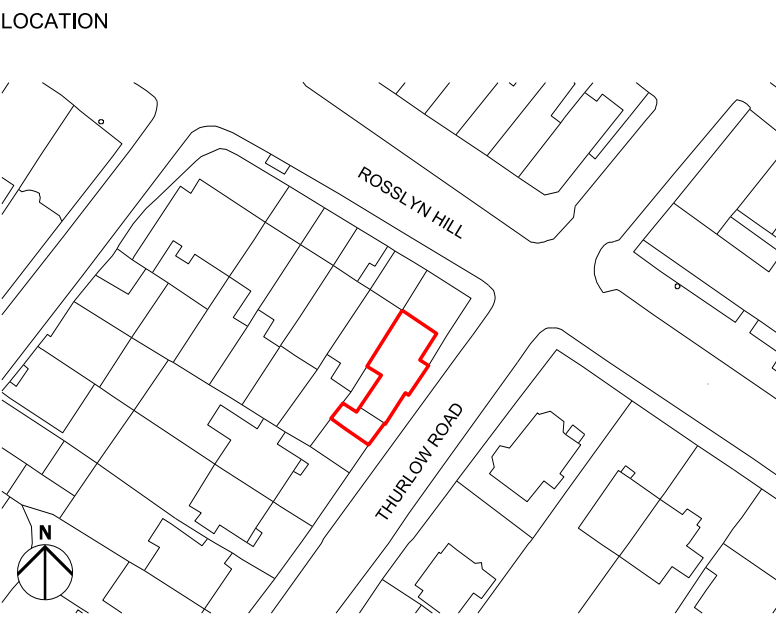
studio H A Limited accepts no responsibility or liability for:-

- any use of this drawing by parties other than the party for whom it was prepared or for purposes other than those for which it was prepared
- any alterations or additions to or discrepancies arising out of changes to the background information on which the drawings are based that was current at the time of issue, and which occur to that information after it has been issued by studio H A
- any loss or degradation of the information held in this drawing resulting from the translation from the original file format to any other file format or from the recipient's reading of it in any other programme or any version of the programme other than that which was used to prepare it
- the accuracy of survey information provided by others or for any costs, claims, proceedings and expenses arising out of reliance on such information
- any scaling from this drawing other than by the local planning authority solely for the purposes of the planning application to which it relates

KEY

ISSUED REVISIONS		
REV	DATE	NOTES
P01	23.11.20	For PLANNING
P02	27.11.20	For PLANNING

CONSULTANTS	NAME
STRUCTURAL ENGINEER:	HEYNE TILLET STEEL LTD



studio H A 23 Drysdale Street
Shoreditch, London, N1 6ND

job title
FLAT 2, 43 ROSSLYN HILL, HAMPSTEAD

drawing title / location
WINDOW DETAILS 02 - PROPOSED

scale
1:20@A1

status
PLANNING

project source drawing no. revision
18001 P 00_401 P02