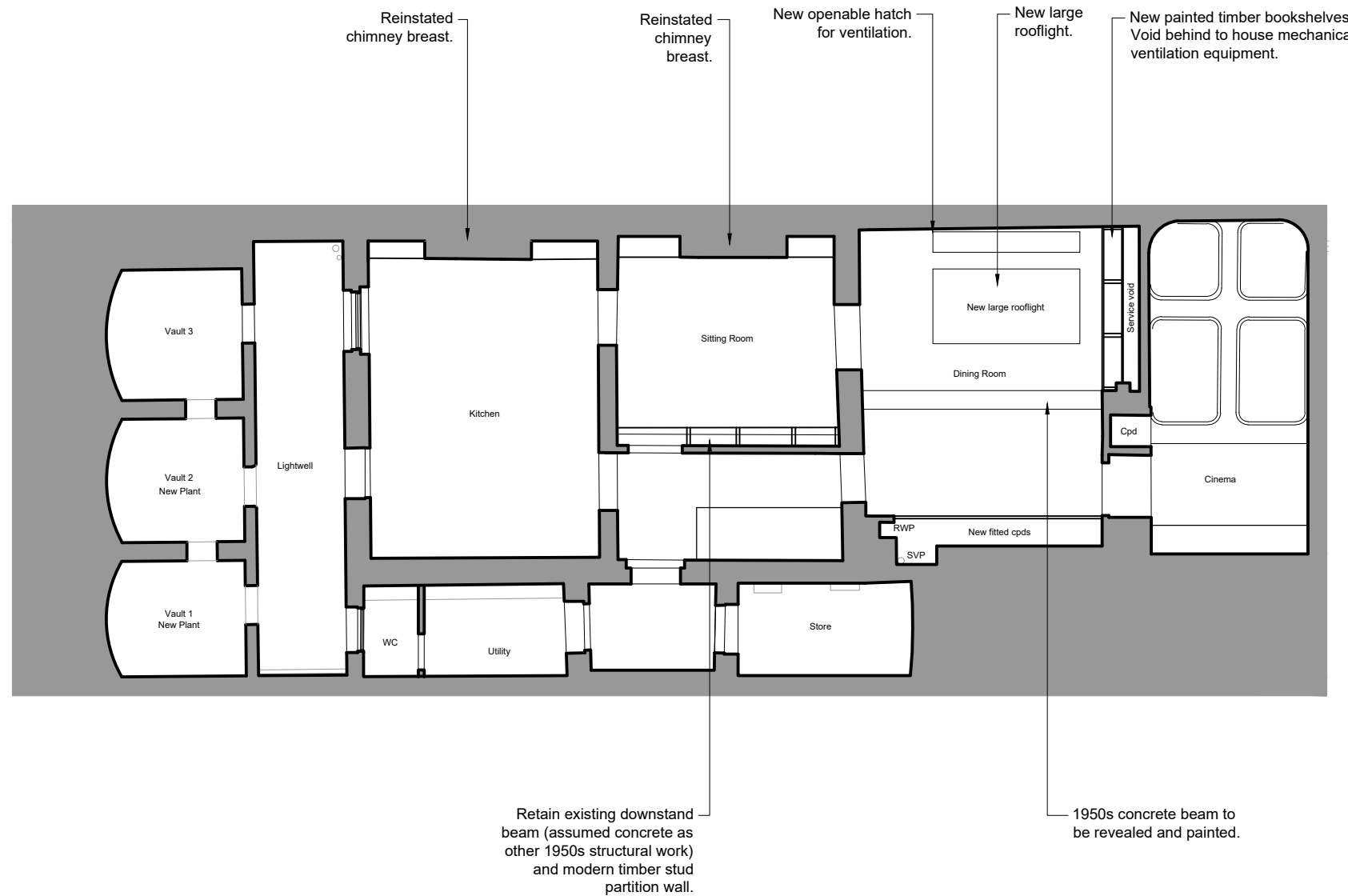
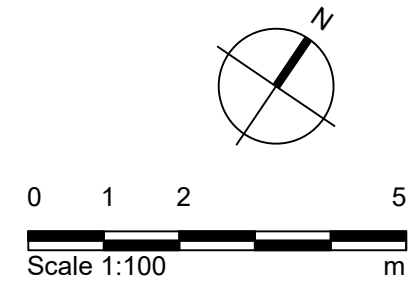


NOTES:

- Cinema room to be retained and protected.



01 Basement Reflected Ceiling Plan
2500 1:100 @ A3



Notes

- Any dwg format drawing is to be read in conjunction with and at the scale of the accompanying pdf.
- Where colours other than black or grey are used, the drawing must be plotted in colour.
- For status 'C' (Construction) drawings all dimensions are to be checked on site by the contractor, scaling is for Local Authority purposes only.
- Unless otherwise indicated, all dimensions are in millimeters.
- All information on this drawing is to be read in conjunction with the relevant Donald Insall Associates specification and trade contractors' drawings and information by specialists.
- In the event of any discrepancy, please contact us immediately.
- This drawing may contain survey information by others and is to be used solely for the purposes for which it was issued.
- These are uncontrolled documents issued for information purposes only. If you have any queries regarding the drawings, please contact DIA immediately.
- Please note DIA cannot be held responsible for any errors arising from changes made to an uncontrolled dwg file.

© 2019 DONALD INSALL ASSOCIATES LTD

Rev	Date	Dwn	Auth	Revision
1	16-12-20	TOB	-	Revised layout
0	24-10-19	EKN	TOB	Initial Issue

Purpose of Issue:
FOR_PLANNING

Donald Insall Associates
Chartered Architects and Historic Building Consultants

12 Devonshire Street
London W1G 7AB
(+44) 020 7245 9888
london@insall-architects.co.uk

1 Crestfield Street

Project	CS1.01	No	2500
Scale (A3)	1:100	Status	P
		Revision	1

Basement Reflected Ceiling Plan
Proposed