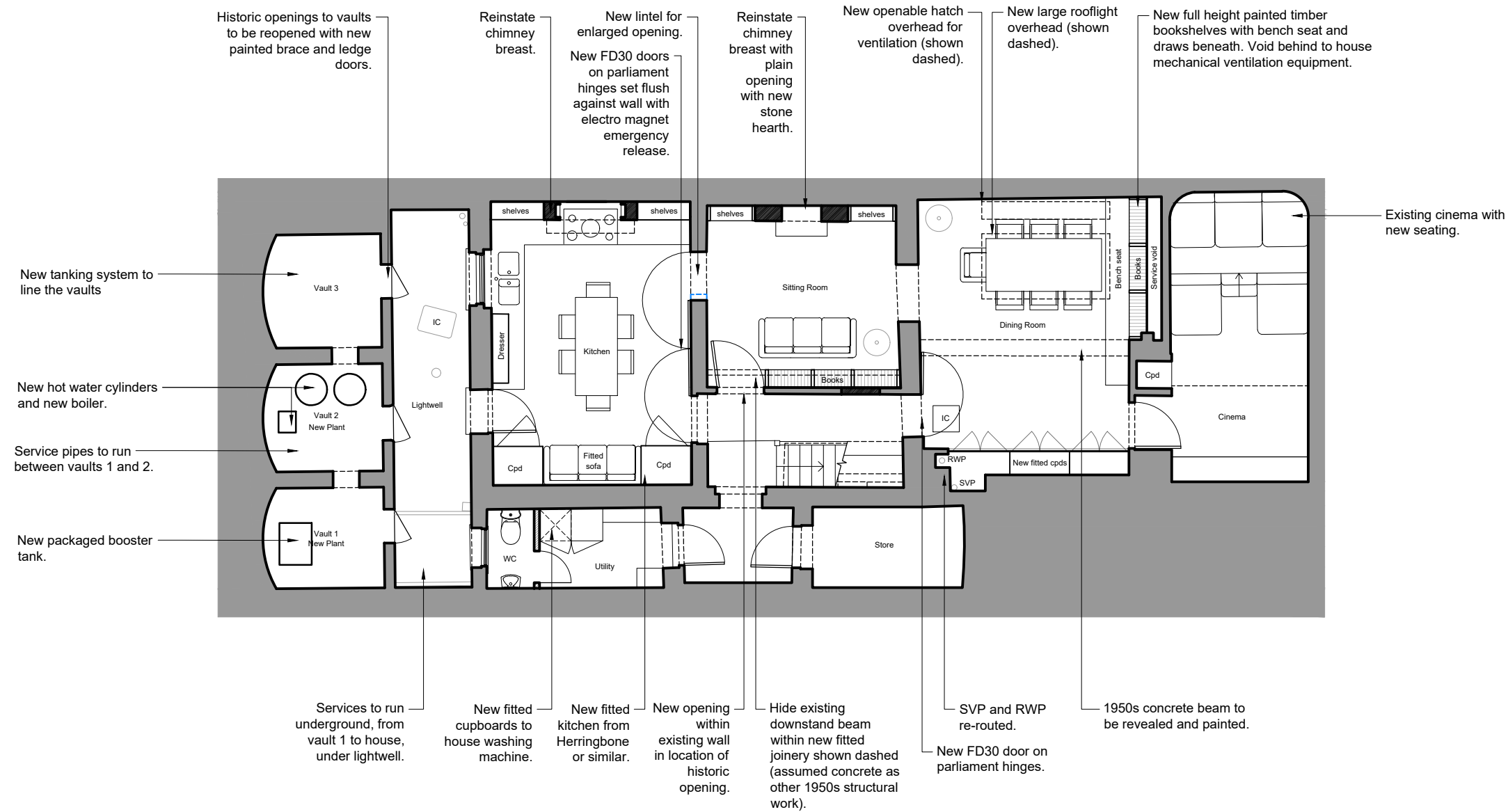
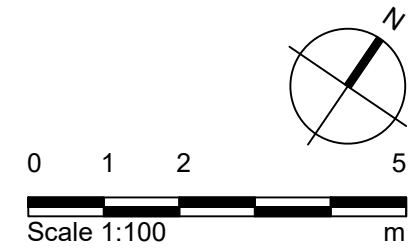


NOTES:

- Existing flag stones to be lifted and set aside for reuse.
- New underfloor heating system to sitting room, kitchen and dining room.
- New timber floor finish to sitting room, kitchen and dining room.



01 Basement Plan
2000 1:100 @ A3



Purpose of Issue:
FOR_PLANNING

Notes

1. Any dwg format drawing is to be read in conjunction with and at the scale of the accompanying pdf.
2. Where colours other than black or grey are used, the drawing must be plotted in colour.
3. For status 'C' (Construction) drawings all dimensions are to be checked on site by the contractor, scaling is for Local Authority purposes only.
4. Unless otherwise indicated, all dimensions are in millimeters.
5. All information on this drawing is to be read in conjunction with the relevant Donald Insall Associates specification and trade contractors' drawings and information by specialists.
6. In the event of any discrepancy, please contact us immediately.
7. This drawing may contain survey information by others and is to be used solely for the purposes for which it was issued.
8. These are uncontrolled documents issued for information purposes only. If you have any queries regarding the drawings, please contact DIA immediately.
9. Please note DIA cannot be held responsible for any errors arising from changes made to an uncontrolled dwg file.

© 2019 DONALD INSALL ASSOCIATES LTD

Rev	Date	Dwn	Auth	Revision
5	16-12-20	JXL	TOB	Revised Layout
4	19-08-20	JXL	TOB	Location of plant in vaults
3	31-01-20	-	TOB	Cost Estimate
2	06-01-20	JXL	TOB	Updates to openings following Pre-App
1	24-10-19	EKN	TOB	Initial for Pre-App
0	02-08-19	JXL	TOB	Initial Issue

Donald Insall Associates
Chartered Architects and Historic Building Consultants

12 Devonshire Street
London W1G 7AB
(+44) 020 7245 9888
london@insall-architects.co.uk

1 Crestfield Street

Project	CS1.01	No	2000
Scale (A3)	1:100	Status	P
		Revision	5

Basement Floor Plan
Proposed