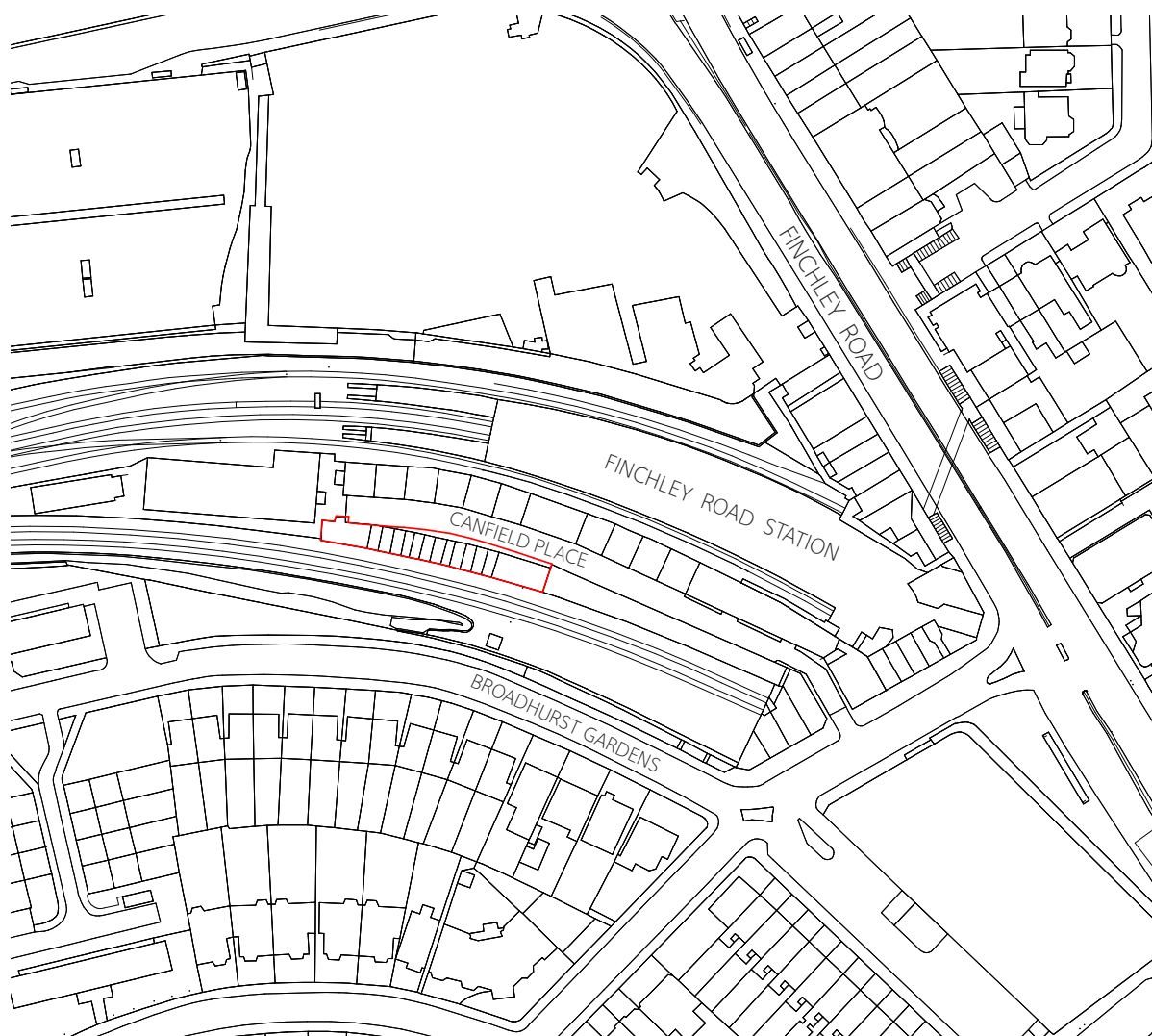


DESIGN AND ACCESS STATEMENT - ADDENDUM (August 2020)

*Canfield Place
London NW6*



www.czwg.com

17 Bowling Green Lane
London EC1R 0QB
020 7253 2523
mail@czwgarchitects.co.uk

CONTENTS

0.1	Introduction	p.3
1.0	FLOOR PLANS	
1.1	Ground Floor	p.4
1.2	First Floor	p.5
1.3	Second Floor	p.6
1.4	Roof	p.7
2.0	SECTIONS	
2.1	Three Storeys	p.8
2.2	Two Storeys	p.9
3.0	ELEVATIONS	
3.1	North Elevation	p.10
3.2	South Elevation	p.11
4.0	AXONOMETRICS	
5.0	HOUSE TYPE PLANS	
5.1	House Type A	p.14
5.2	House Type B	p.15
5.3	House Type C	p.16
5.4	House Type D	p.17
6.0	CGI VIEWS	
6.1	View from Canfield Place (Central)	p.18
6.2	View from Canfield Place (west)	p.19
6.3	View from Broadhurst Gardens (north east)	p.20
6.4	View from Broadhurst Gardens (West)	p.21

0.1 Introduction

This Design and Access Statement Addendum provides details of revisions to previous proposals as a result of discussions with Network Rail Asset Protection;

1. Ground Floor 1m set-back from existing retaining wall as required by Network Rail to allow for access for maintenance (min height at No.26 = 2.175m) as shown on pages 4 and 14-17.
2. Ground floor south elevation revised to show recessed ground floor plan. Upper floors as previous as shown (see pages 11 and 12).
3. Minor upper window amendments in Type D (Wheelchair Unit), new window added to living space onto Canfield Place, matching Ground Floor window below (see pages 13 and 17).
4. Type B revised from 2B4P to 2B3P; Type D revised from 2B4P WC to 2B3P WC. (No change in unit mix for Type A and C)
5. Views from Broadhurst Gardens revised to show ground floor set-back as shown on pages 18 and 19. (Canfield Mews views unchanged)

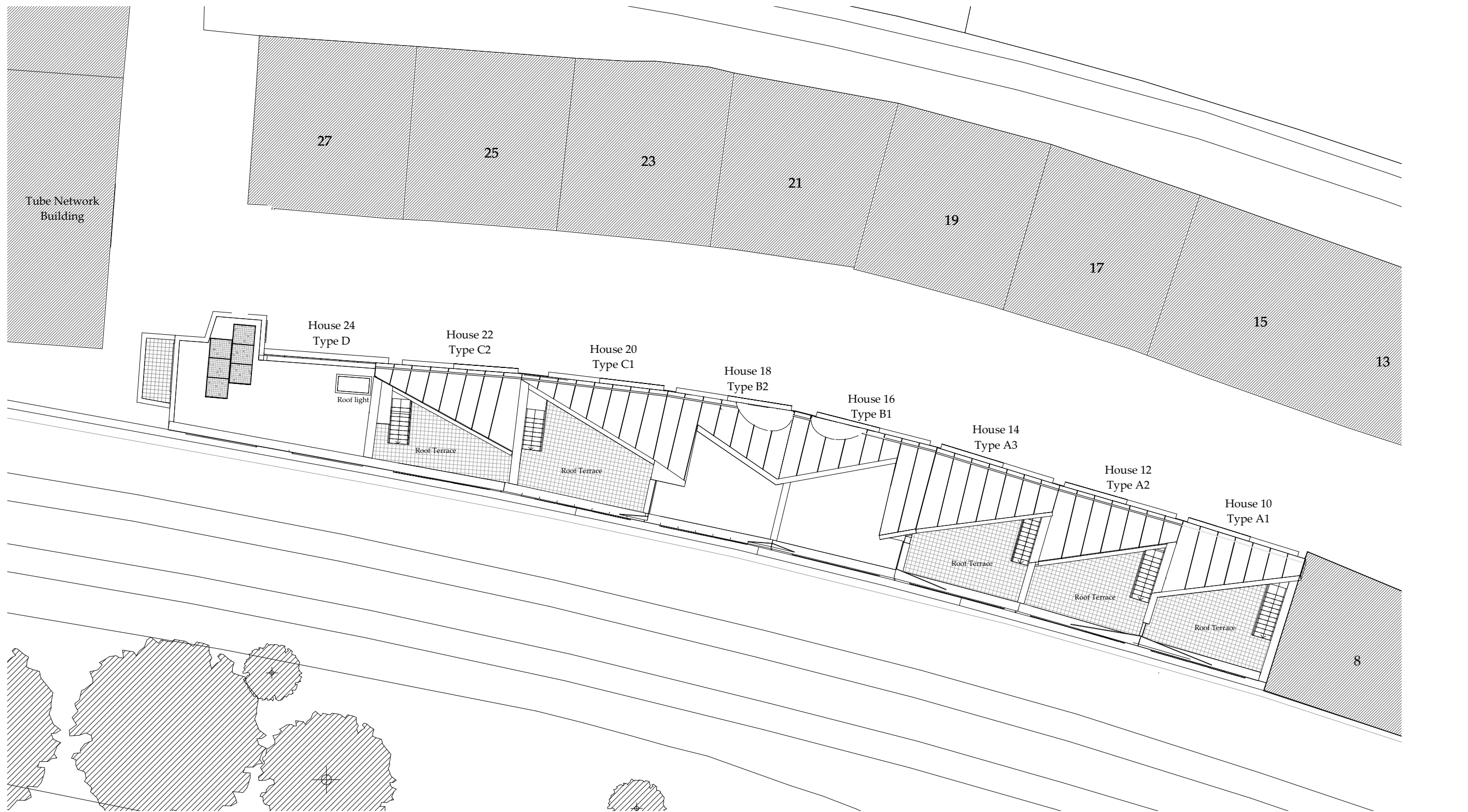




1.2 First Floor



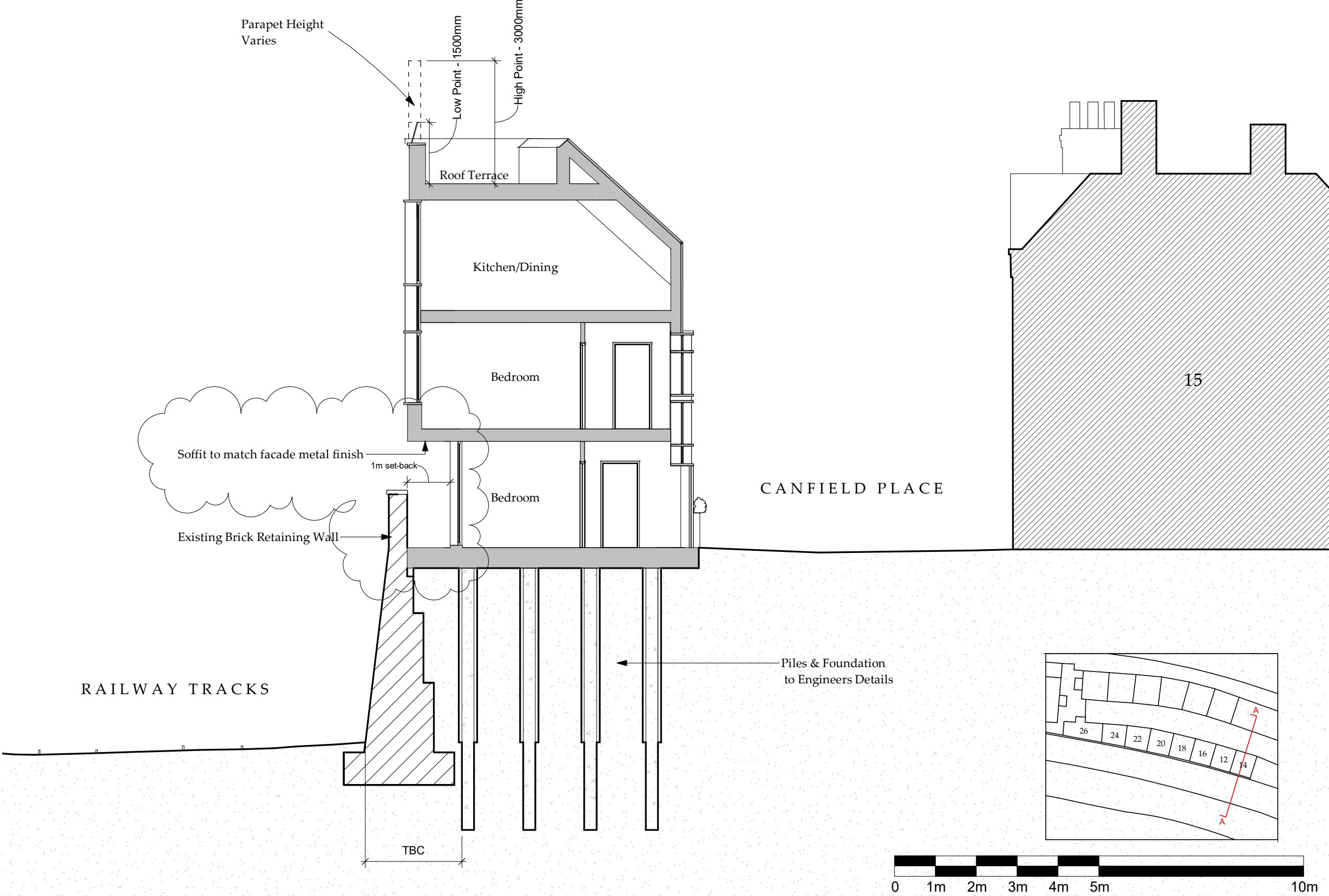
1.3 Second Floor



1.4 Roof

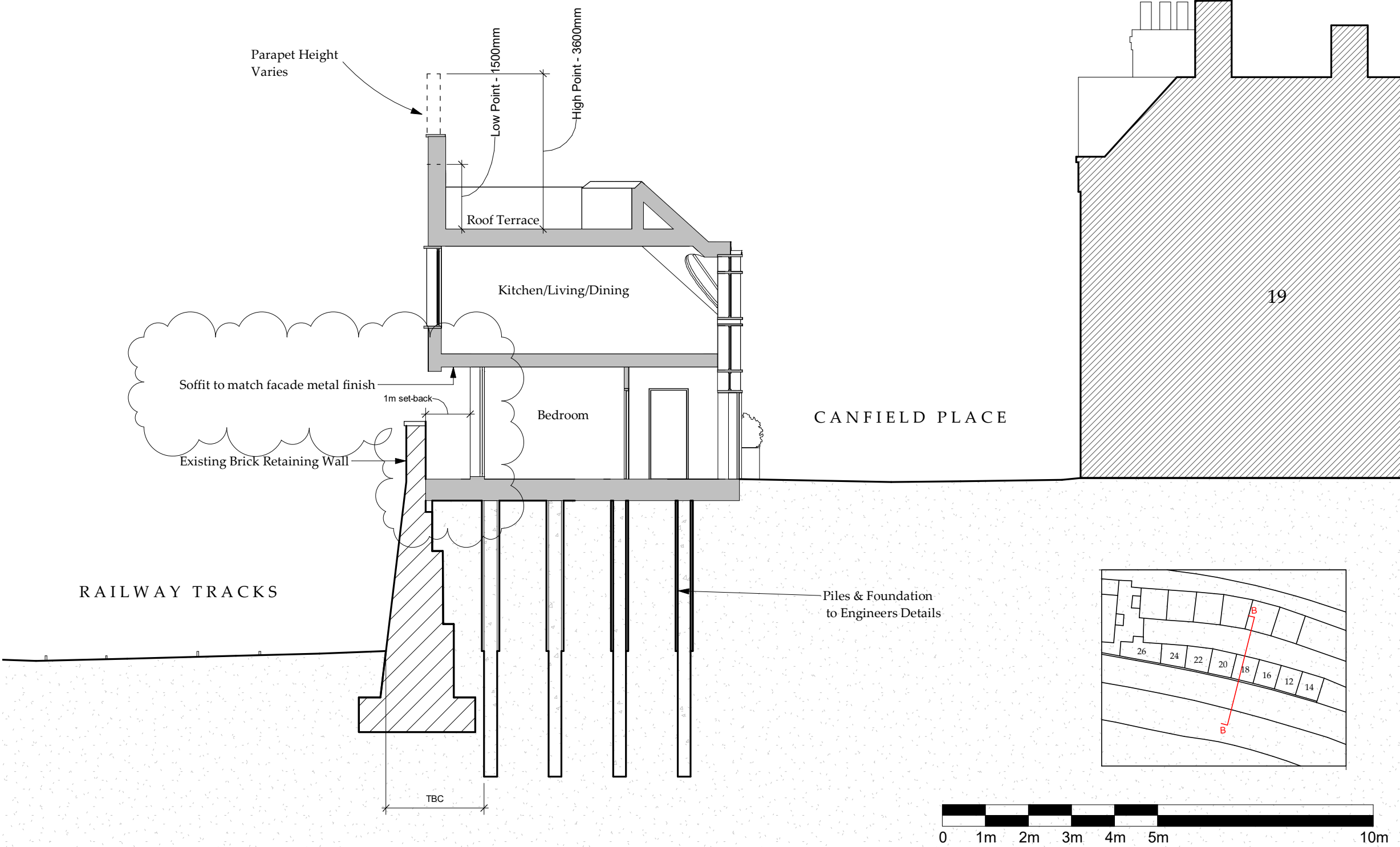
2.0 SECTIONS

2.1 Three Storeys



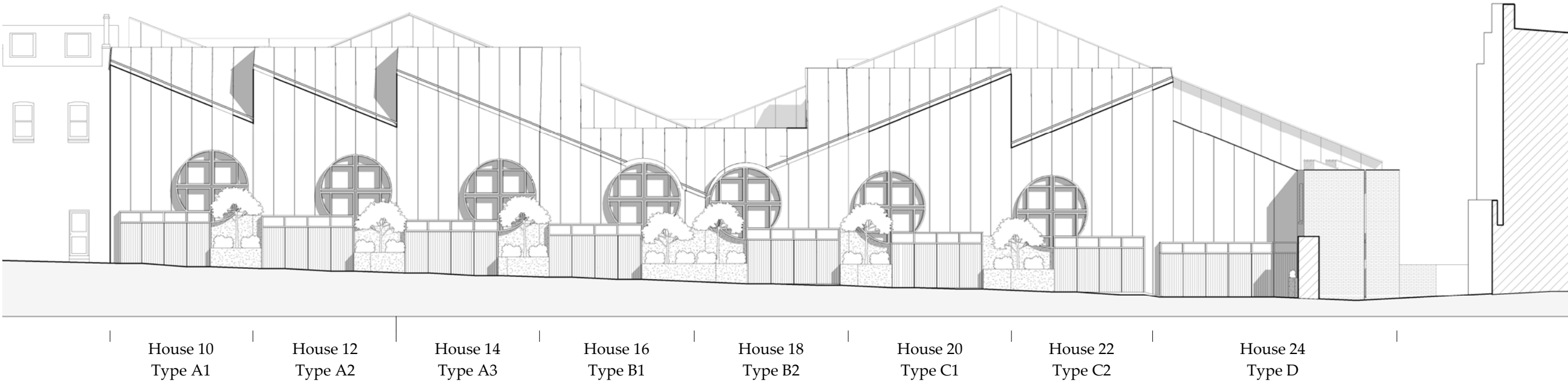
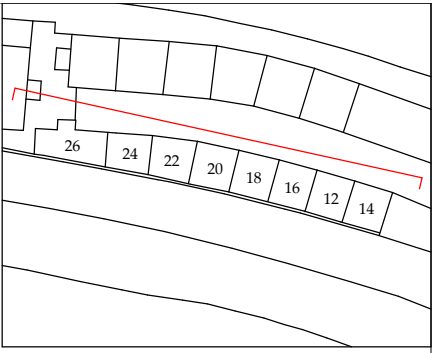
SECTION THROUGH HOUSE 14, TYPE A1

2.2 Two Storeys



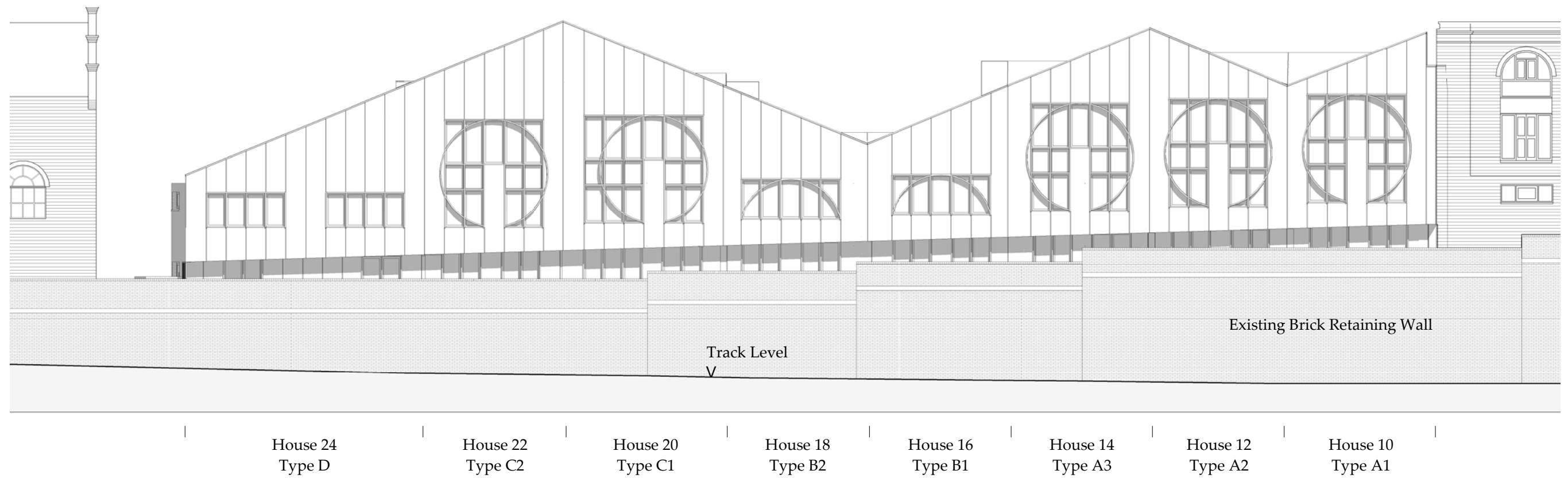
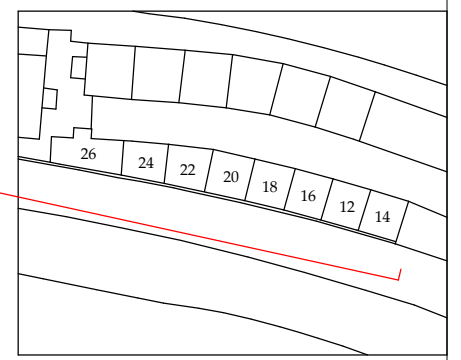
SECTION THROUGH HOUSE 18, TYPE B1

3.0 ELEVATIONS



3.1 North Elevation

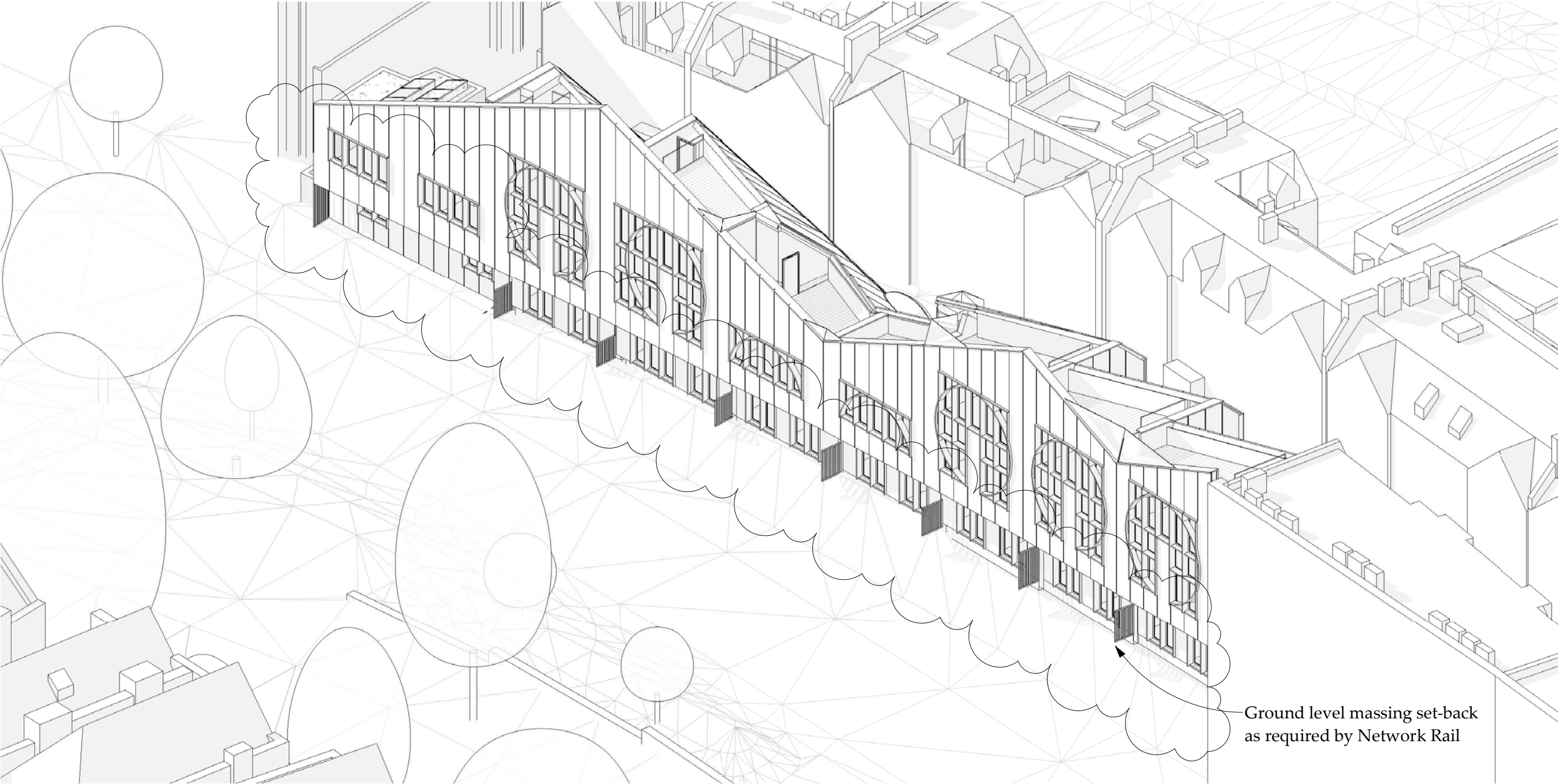




3.2 South Elevation



4.0 AXONOMETRICS



Ground level massing set-back
as required by Network Rail

FIGURE 7 AERIAL VIEW FROM SOUTHEAST

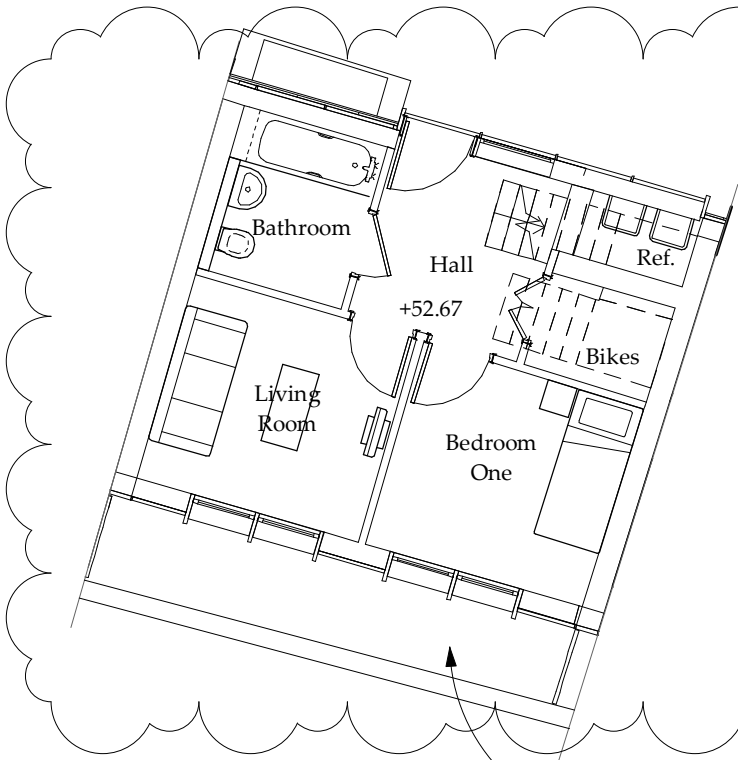


FIGURE 8 AERIAL VIEW FROM NORTHEAST

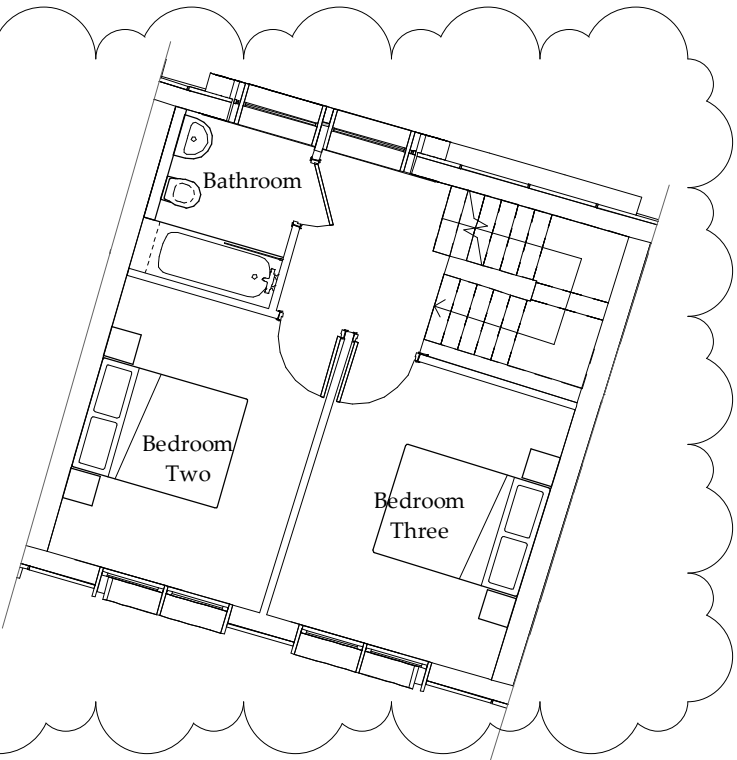
5.0 HOUSE TYPE PLANS

5.1 House Type A

Ground Floor

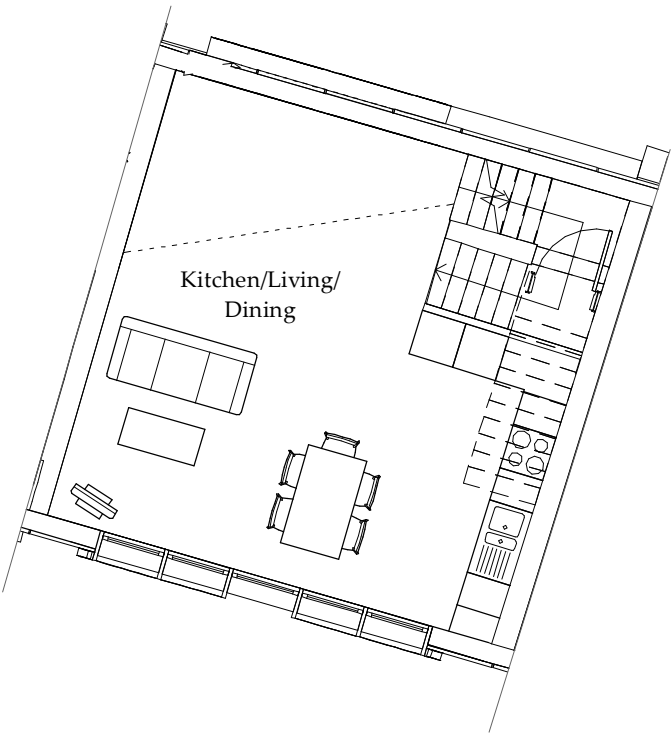


First Floor

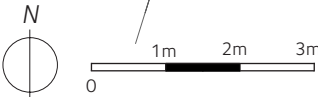
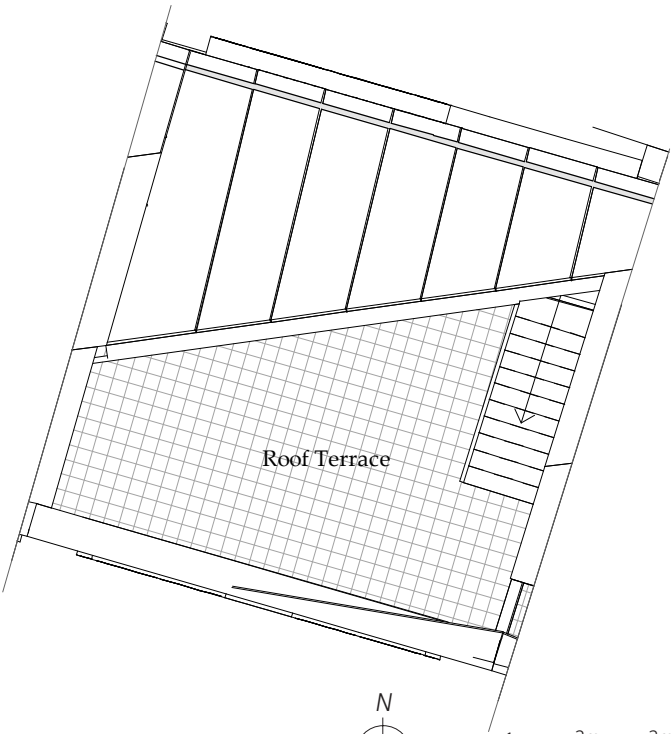


Reduced Ground Floor; Layout adjustment to Ground and First Floor

Second Floor

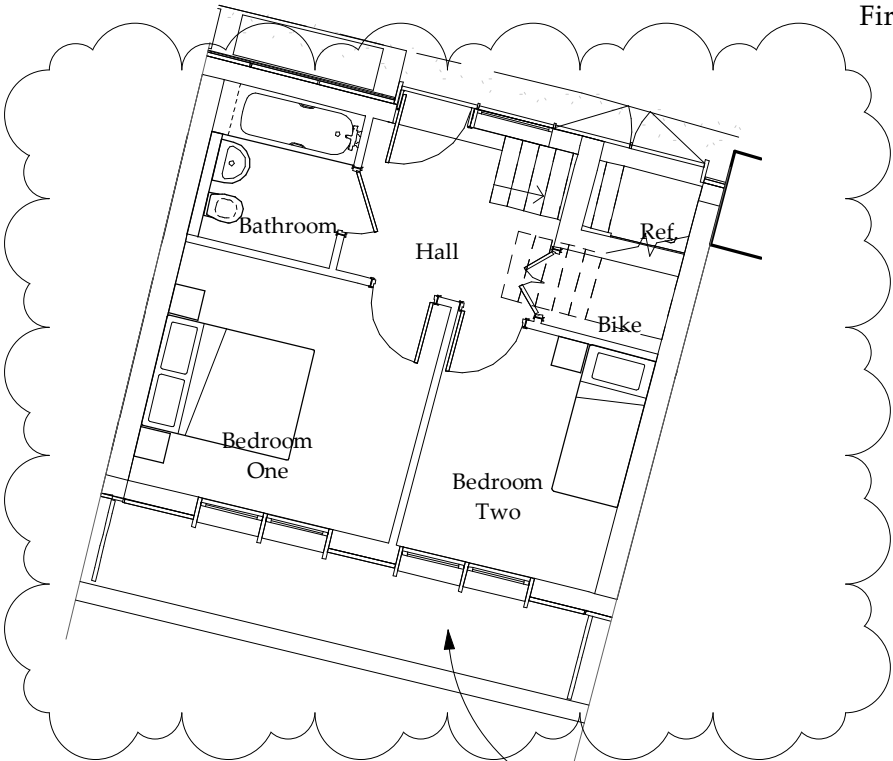


Roof

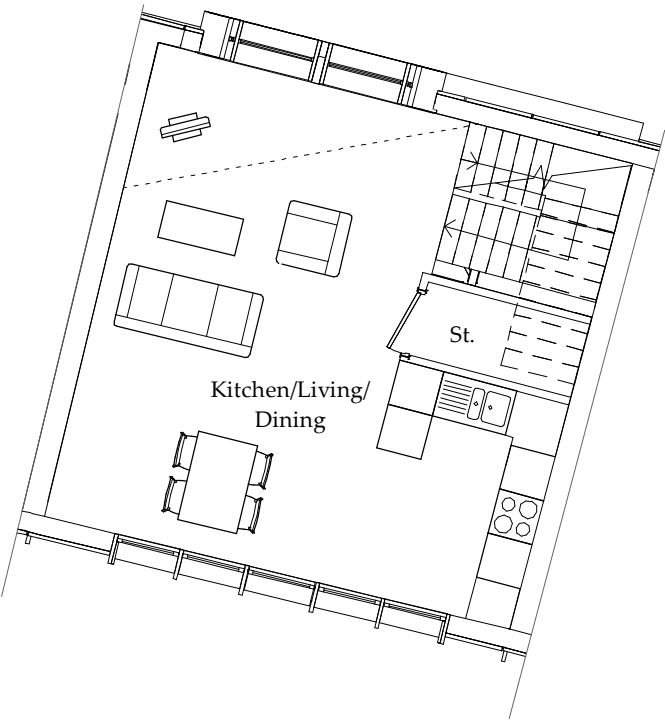


5.2 House Type B

Ground Floor

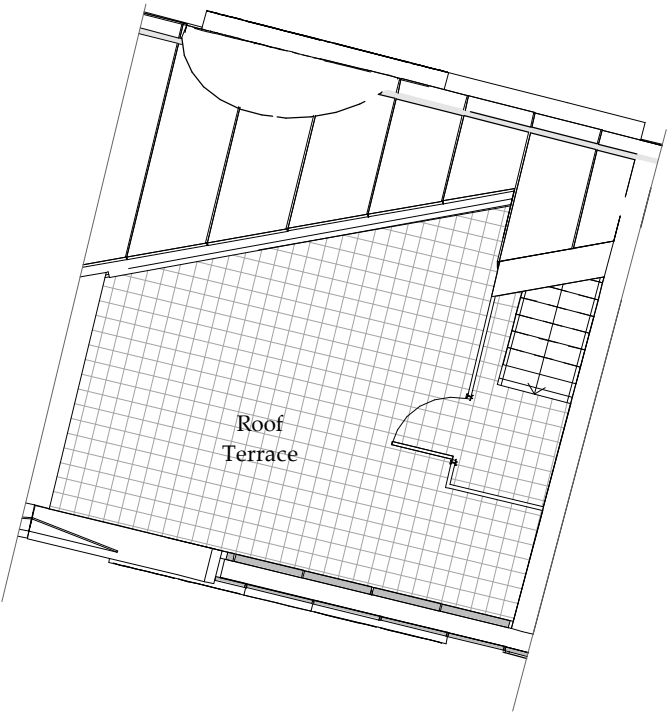


First Floor



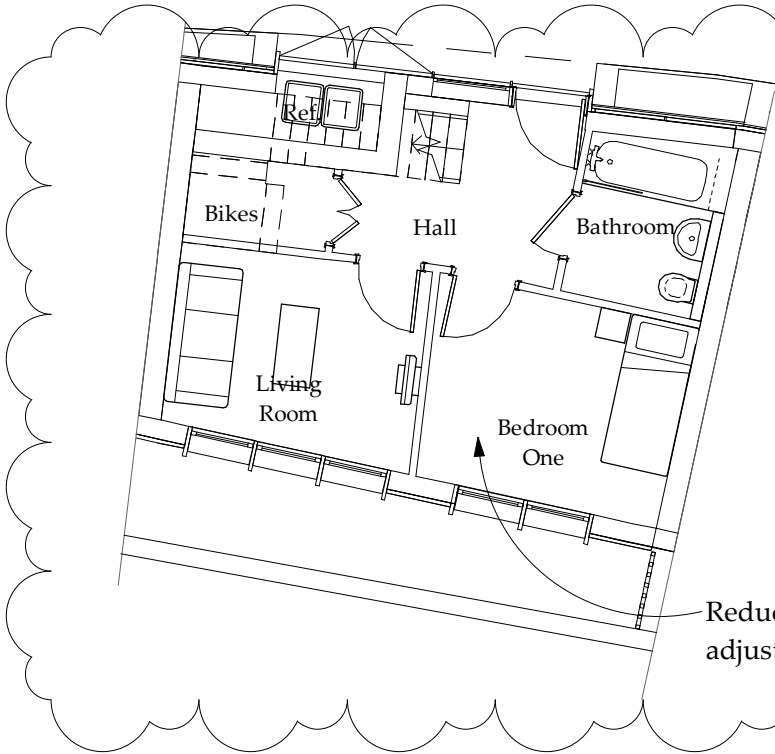
Reduced Ground Floor; 2B4P to 2B3P

Roof

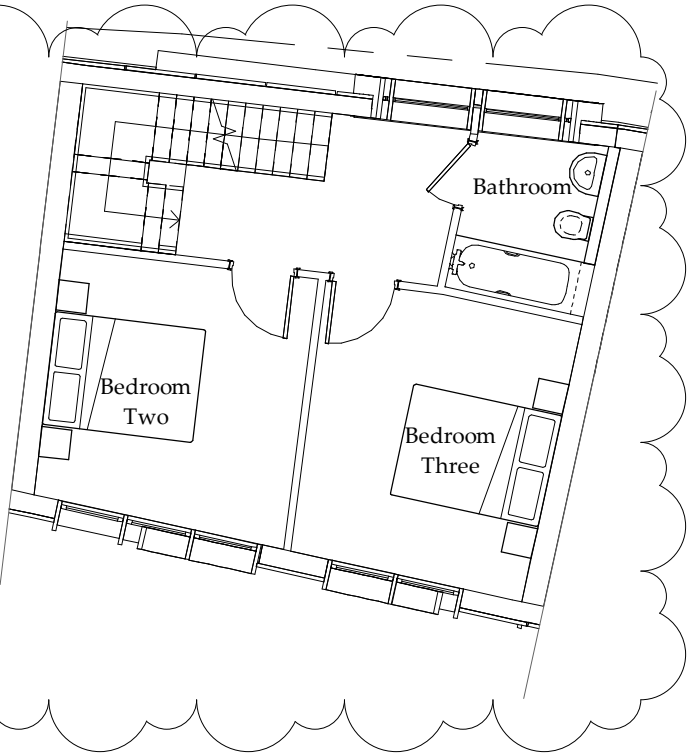


5.3 House Type C

Ground Floor

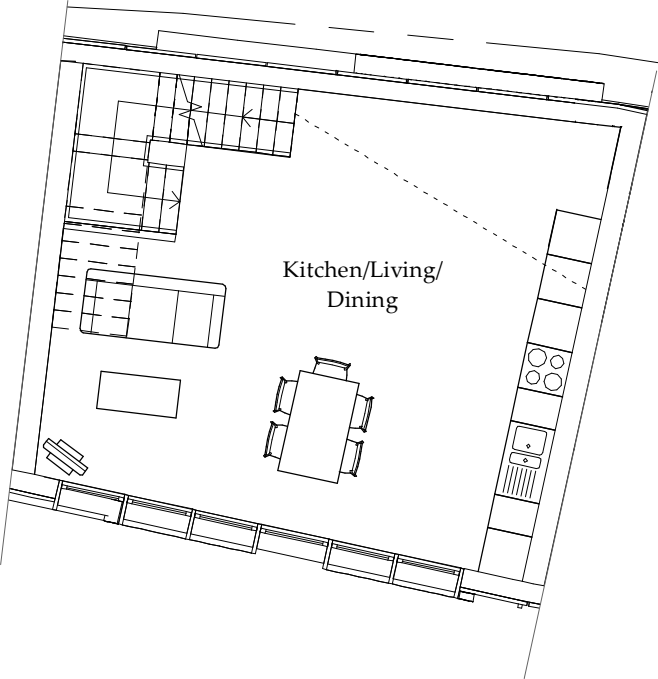


First Floor

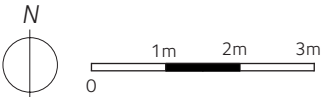
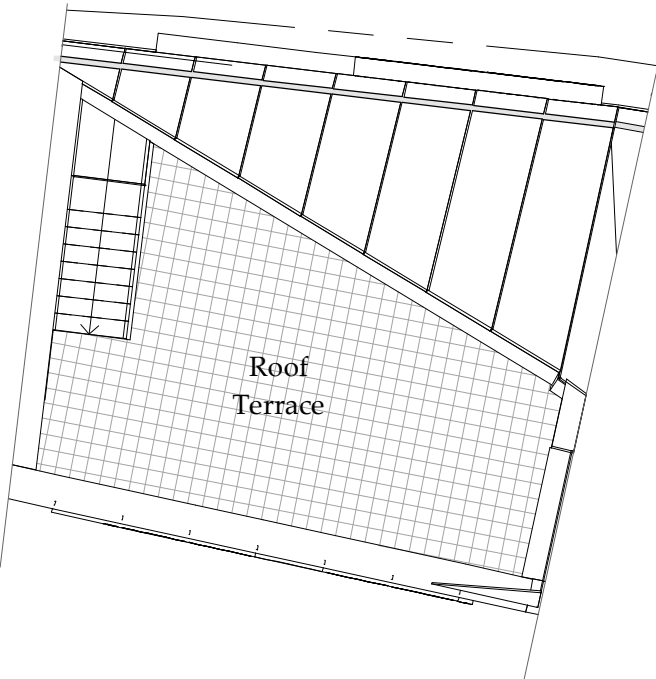


Reduced Ground Floor; Layout adjustment to Ground and First Floor

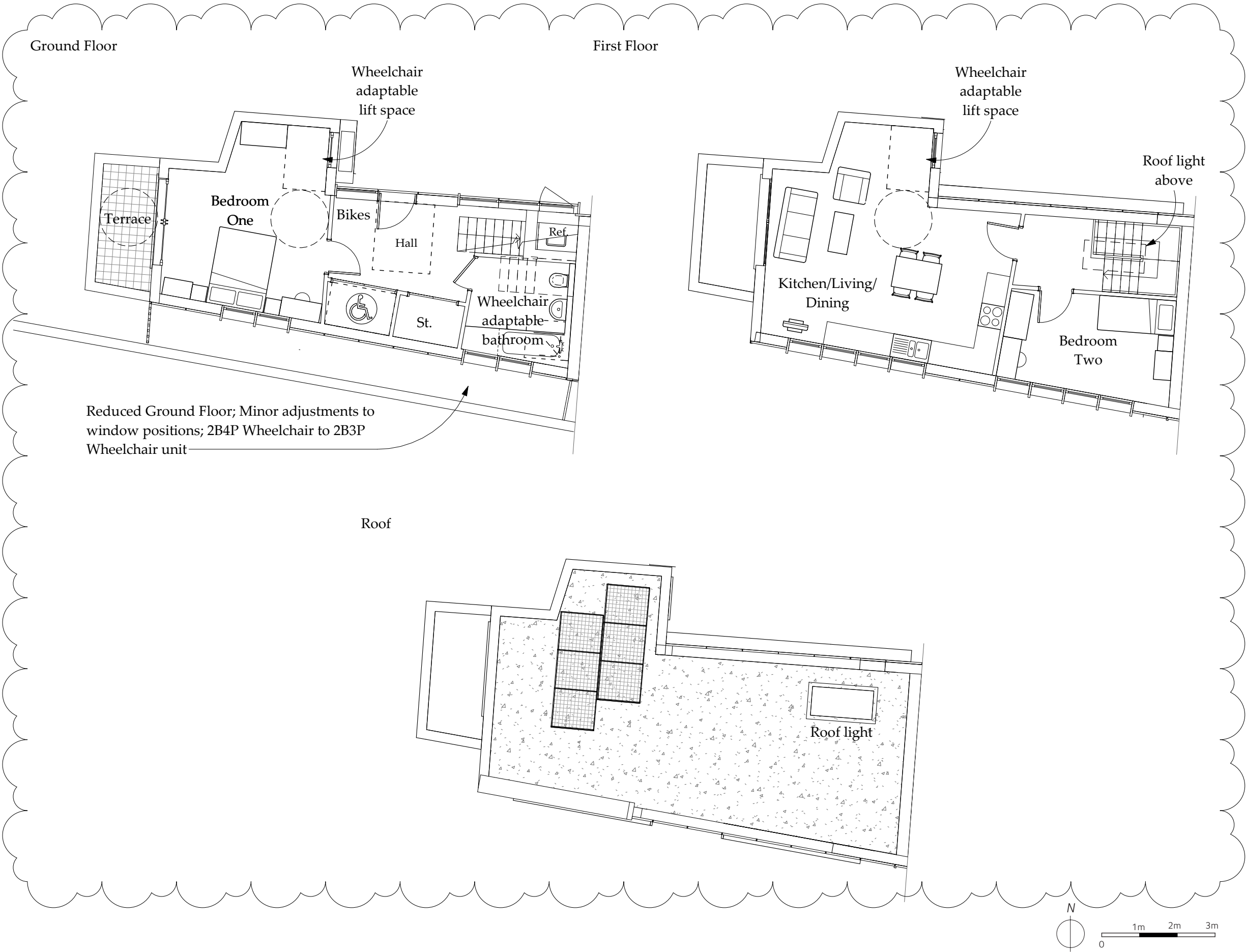
Second Floor



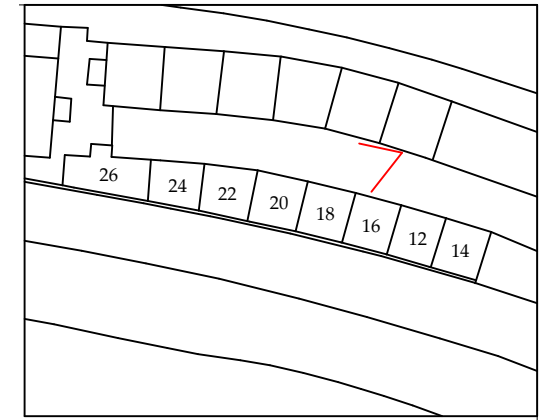
Roof



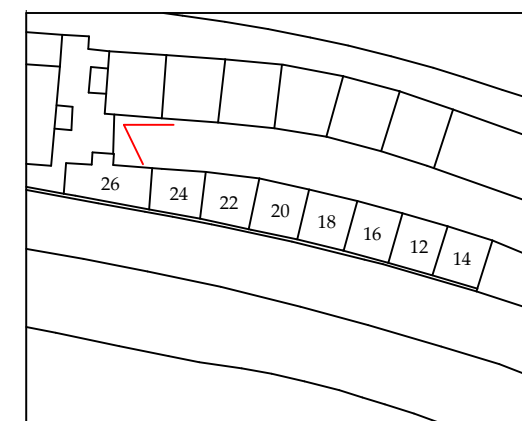
5.4 House Type D



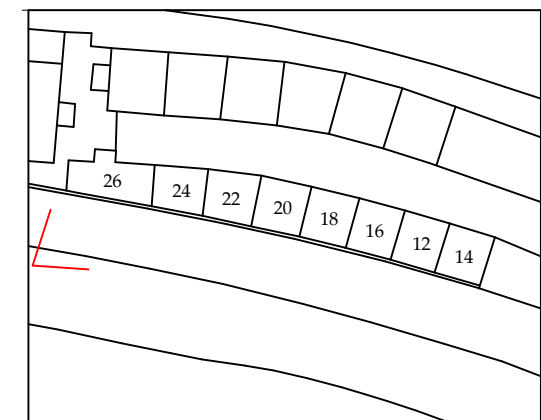
6.0 CGI VIEWS



6.1 View from Canfield Place (Central)



6.2 View from Canfield Place (west)



6.3 View from Broadhurst Gardens (north east)



6.4 View from Broadhurst Gardens (West)