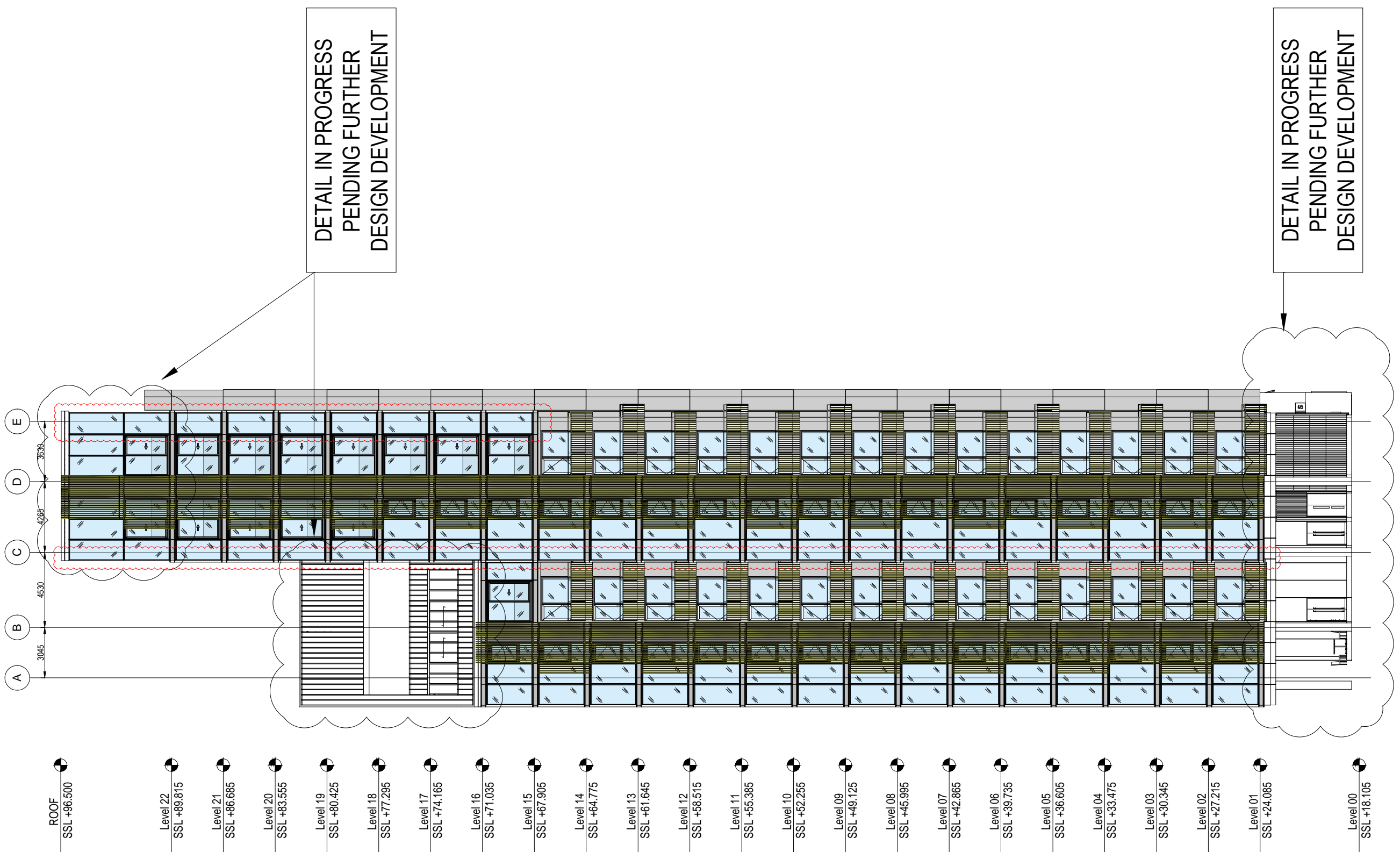


Proprietary Note:
 The copyright of this drawing remains with us. No copies may be taken without our written consent nor the drawing made available to third parties. Legal action will be taken in case of breach of the above requirement.

NOTES:



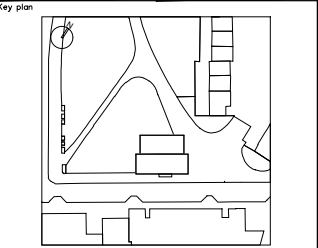
- ROOF
SSL +96.500
- Level 22
SSL +89.815
- Level 21
SSL +86.685
- Level 20
SSL +83.555
- Level 19
SSL +80.425
- Level 18
SSL +77.295
- Level 17
SSL +74.165
- Level 16
SSL +71.035
- Level 15
SSL +67.905
- Level 14
SSL +64.775
- Level 13
SSL +61.645
- Level 12
SSL +58.515
- Level 11
SSL +55.385
- Level 10
SSL +52.255
- Level 09
SSL +49.125
- Level 08
SSL +45.995
- Level 07
SSL +42.865
- Level 06
SSL +39.735
- Level 05
SSL +36.605
- Level 04
SSL +33.475
- Level 03
SSL +30.345
- Level 02
SSL +27.215
- Level 01
SSL +24.085
- Level 00
SSL +18.105

Design Architect
Stiff + Trevillon Architects Ltd
 16 Woodfield Road, London W9 2BE

Client
Henry Construction Projects Ltd
 Church Rd, Cranford, Middlesex, TW5 9RY

Rev	Date	By	Description
01	23.12.2020	AZ	REVISED AS NOTED

Project name
BRILL PALCE RESIDENTIAL TOWER
 Brill Place, London



Project No. _____ Lot No. _____

bluesteel
 CONSULTING ARCHITECTURE
 Via Vittorio Veneto, 11 - 31014 San Martino di Castellina (TV) Italy
 Phone 0438-500103 - Fax 0438-500498

Title
WEST ELEVATION

Drawn by
 A. Zanin

Checked by
 D. Da Re

Approved by
 L. De Noni

Scale (A3 size)
 1:250

Print date of issue
 26.10.2020

Status Drawing No.
 - **0182-1023-01**

Revision No.
 01

DIVULGATION AND REPRODUCTION FORBIDDEN BY LAW