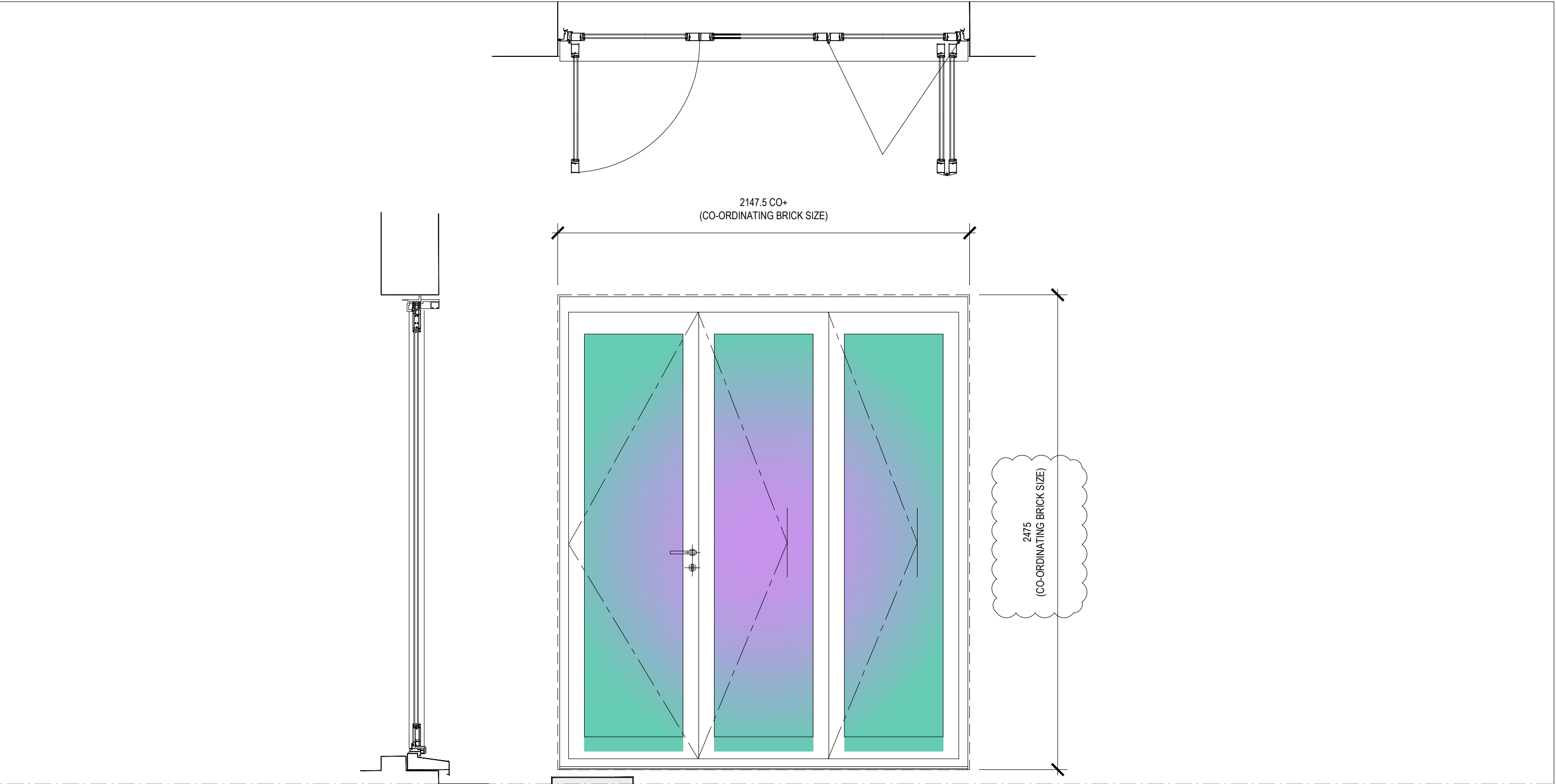


1-D01

FIRST FLOOR OUTWARD OPENING 5-LEAF BI-FOLDING DOORS.	
FRAMES: ALUMINIUM DOOR LEAFS: ALUMINIUM FINISH: POWDERCOATED - WHITE	
DOOR GLAZING: CLEAR DOUBLE GLAZING, TOUGHENED / LAMINATED AS NOTED ON ELEVATIONS.	
'U' VALUE RATING - 0.18W/m ² K OR BETTER.	
1-D01: <u>IRONMONGERY - OUTWARD OPENING LEAFS</u> <u>FINISH TO MATCH JOINERY</u>	
HINGES:	2 PAIR PER LEAF.
HANDLE:	LEVER HANDLE WITH MINIMUM 5 POINT LOCKING MECHANISM
LOCKING:	KEY OPERATED MORTICE DEAD BOLT WITH INTERNAL THUMBTURN CONCEALED JAMB FITTED TPWER BOLTS TOP AND BOTTOM TO SLAVE LEAF.
OTHER:	BI-FOLD RUNNING GEAR



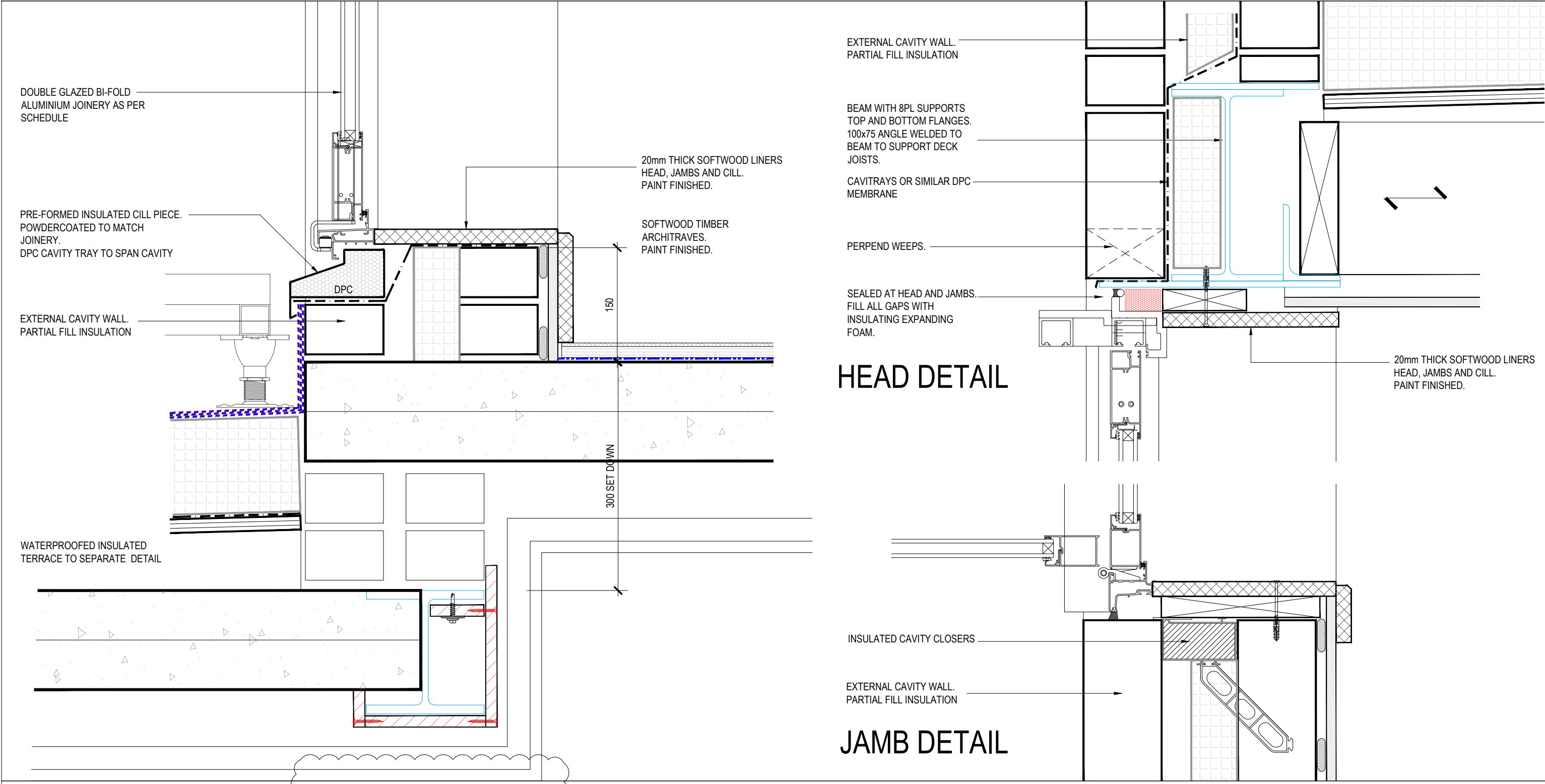
2-D01

SECOND FLOOR OUTWARD OPENING 2-LEAF BI-FOLDING DOOR / 1 LEAF HINGED.	
FRAMES: ALUMINIUM DOOR LEAFS: ALUMINIUM FINISH: POWDERCOATED - WHITE	
DOOR GLAZING: CLEAR DOUBLE GLAZING TOUGHENED / LAMINATED AS NOTED ON ELEVATIONS.	
'U' VALUE RATING - 0.18W/m ² K OR BETTER.	
2-D01: <u>IRONMONGERY - OUTWARD OPENING LEAFS</u> <u>FINISH TO MATCH JOINERY</u>	
HINGES:	1 1/2 PAIR PER LEAF.
HANDLE:	LEVER HANDLE WITH MINIMUM 5 POINT LOCKING MECHANISM
LOCKING:	KEY OPERATED MORTICE DEAD BOLT WITH INTERNAL THUMBTURN CONCEALED JAMB FITTED TPWER BOLTS TOP AND BOTTOM TO SLAVE LEAF.
OTHER:	BI-FOLD RUNNING GEAR

SCALE 1:20@A1

FIRST FLOOR REAR FACADE

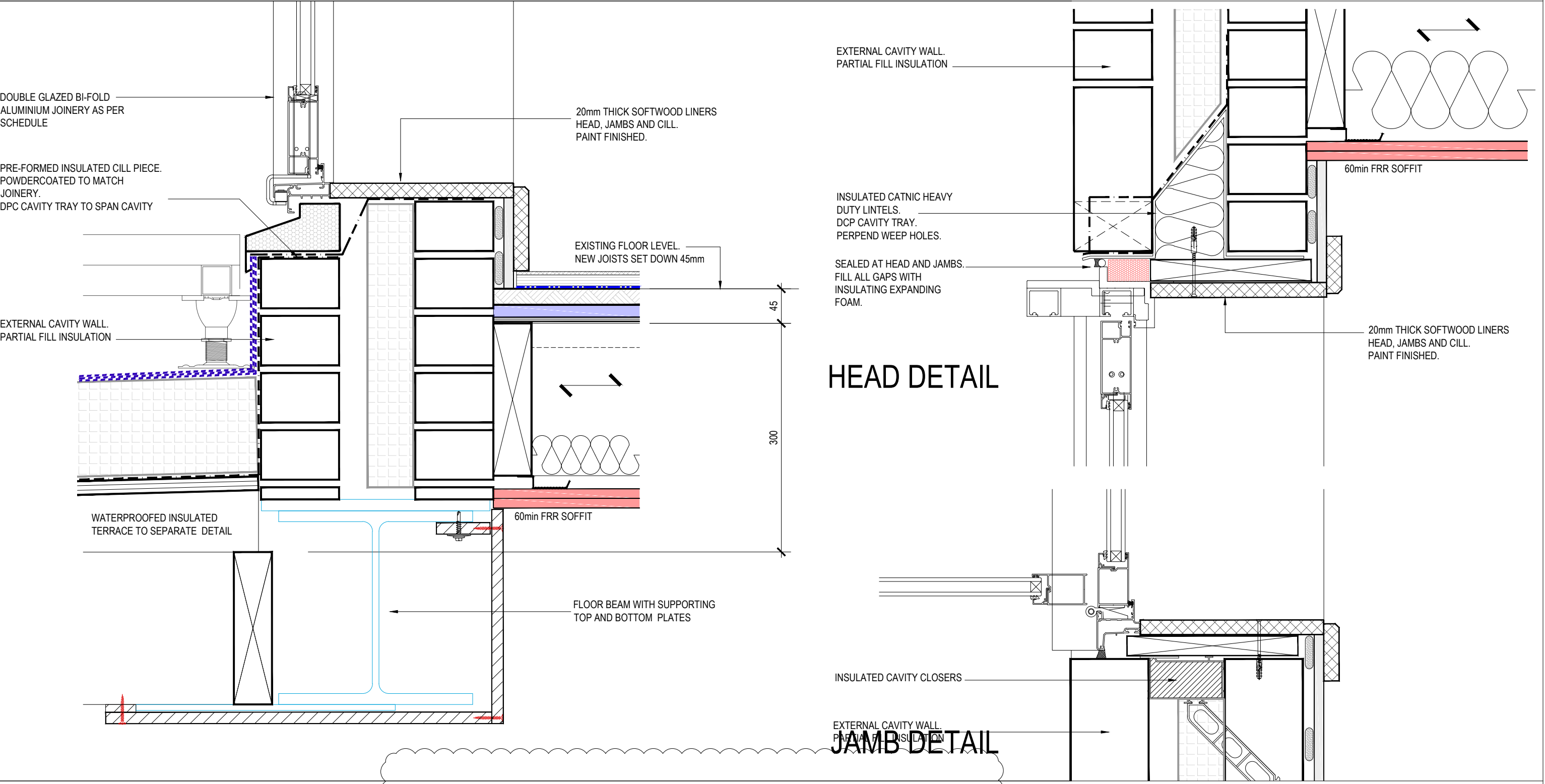
SECOND FLOOR REAR FACADE



SCALE 1:5@A1

CILL DETAIL

FIRST FLOOR REAR FACADE



CILL DETAIL

SECOND FLOOR REAR FACADE

EXTERNAL WINDOWS AND DOORS 3 of 4

notes: This drawing is copyright. Do not scale from drawing. The Main Contractor is to check all dimensions and report any discrepancies to the Project Architect prior to work on site.

A	20-03-06	UPDATED AS CLOUDED
-	20-02-07	UPDATED FOR SITE ISSUE
rev.	date	notes

KLT
KLT

drawn by

client	CREATE REIT LTD		
project	283 GRAYS INN ROAD LONDON WC1		
title	EXTERNAL WINDOWS 3of4		
scale	1:5@A1		
date	JAN 20	status	DRAFT
drawn by	KLT	checked by	MNA
job no.	1264	dwg no.	D-022 A

MNA
MARK NEWTON ASSOCIATES

SOUTH LODGE,
HOWE GREEN, HERTFORD, HERTFORDSHIRE, SG13 8LH
t - 01707 256366 m - 07966 380613
e - mark@marknewtonassociates.com