

## Proposed and Existing Photo Sheet – The Henson Building

### Existing – Decking to Balconies, Penthouse Terraces and Courtyard

Combustible timber decking boards.

### Proposed – Decking to Balconies, Penthouse Terraces and Courtyard

Blazeboard is a non-combustible, re-enforced concrete composite decking suitable for high-rise balconies and terraces, which replicates the look, feel and slip resistance of hardwood.

<https://blazeboard.co.uk/>

#### *Alternative Product – Adek20*

*Adek is a non-combustible, lightweight, engineered aluminium decking system. Any RAL colour can be ordered.*

<https://ecodek.co.uk/adek-non-combustible-aluminium-decking-system/>



Blazeboard:



*Alternative Product: Adek 20:*



**Existing – Soffits to Balconies**

Combustible timber soffit boards.



**Proposed – Soffits to Balconies**

Blazeboard is a non-combustible, re-enforced concrete composite decking suitable for high-rise balconies and terraces, which replicates the look, feel and slip resistance of hardwood.

<https://blazeboard.co.uk/>

*Alternative Product – Adek20*

*Adek is a non-combustible, lightweight, engineered aluminium decking system. Any RAL colour can be ordered.*

<https://ecodek.co.uk/adek-non-combustible-aluminium-decking-system/>

Blazeboard:



*Alternative Product: Adek 20:*



**Existing - Soffits at Ground Level**

Combustible timber soffit boards.

**Proposed – Soffits at Ground Level**

Blazeboard is a non-combustible, re-enforced concrete composite decking suitable for high-rise balconies and terraces, which replicates the look, feel and slip resistance of hardwood.

<https://blazeboard.co.uk/>

*Alternative Product – Adek20*

*Adek is a non-combustible, lightweight, engineered aluminium decking system. Any RAL colour can be ordered.*

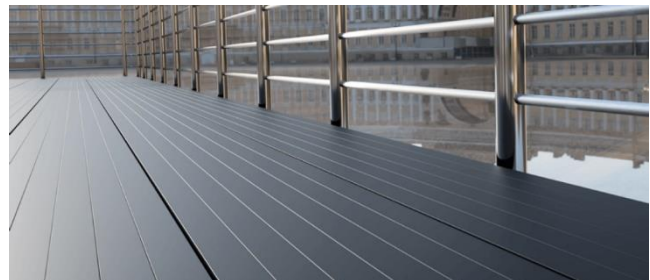
<https://ecodek.co.uk/adek-non-combustible-aluminium-decking-system/>



Blazeboard:



*Alternative Product: Adek 20:*





**Existing - Vertical Cladding at Ground Level**

Combustible timber cladding

**Proposed - Vertical Cladding at Ground Level**

Vulcan VitraDual, non-combustible aluminium cladding. Can be cut to size and timber effect finish applied.

<https://valcan.co.uk/product/vitradual/>

*Alternative Product – Ash & Lacey LineAL-x Plank Non-combustible aluminium plank façade system which is suitable for both vertical or horizontal application and in a timber effect finish.*

<https://www.ashandlacy.com/construction/products/facade/lineal-x/>



Vulcan VitraDual:



MATCHING COLOURS



6300 Classic Oak



6355 Elegant Teak

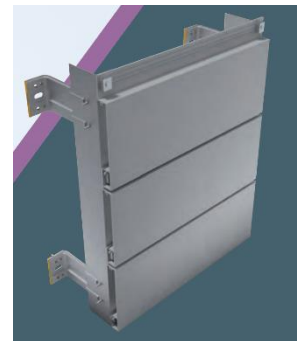


6385 Ascot Teak



6399 Majestic Alder

*Alternative Product: Ash & Lacey LineAL-x Plank*



**Existing – Insulated Render Systems**

Combustible insulated EPS render system.

**Proposed – Insulated Render Systems**

StoTherm Mineral K Non-combustible Render System. Colour and texture of rendered finish to match existing.

<http://www.sto.co.uk/en/products/external-wall-insulation/stootherm-mineral/system-variants.html>



**Existing – Vertical Curtain Walling**

Combustible insulation located behind the vertical aluminium curtain walling panels

**Proposed – Vertical Curtain Walling**

Combustible insulation to be replaced with non-combustible insulation and the existing vertical aluminium curtain walling panels are to be reinstalled. If the aluminium curtain walling panels are required to be replaced they will match the existing panels on a like for like basis.



N/A