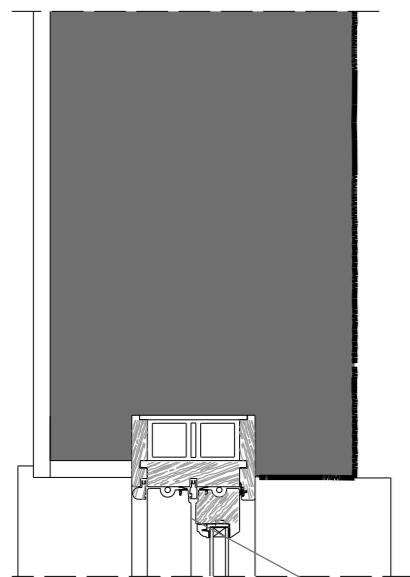


INTERIOR

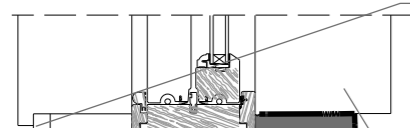
EXTERIOR



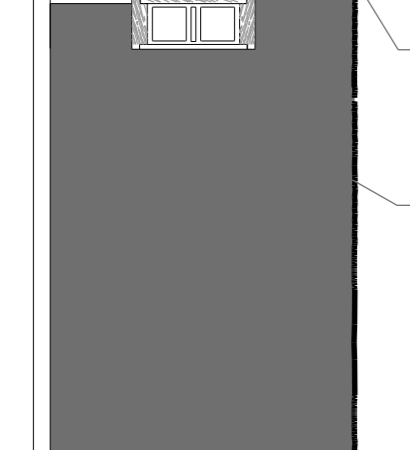
PAINTED TIMBER BOX SASH WINDOW



TILE FINISH TO BATHROOMS



MASONRY SUB CILL

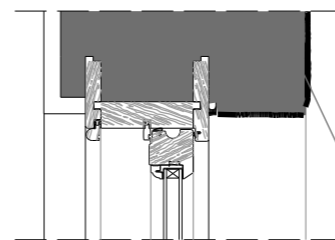


PAINTED MASONRY WALL

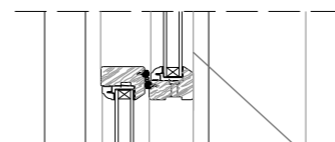
70
A SASH WINDOW PLAN SECTION

INTERIOR

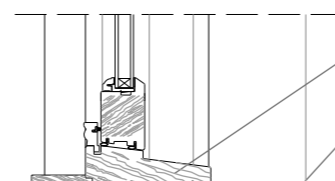
EXTERIOR



PAINTED BRICK EXTERNAL WALL



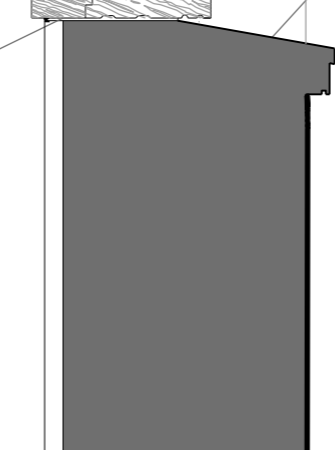
PAINTED TIMBER SASH WINDOW AND CILL. LOW-E GLASS.



HARDWOOD CILL

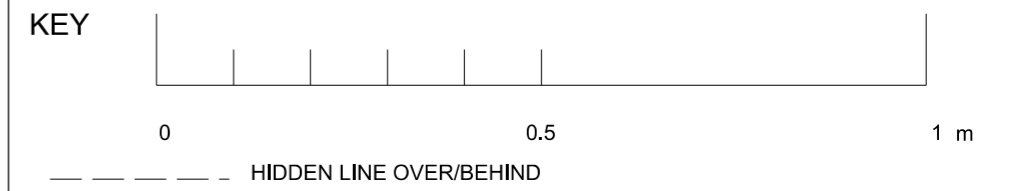
MASONRY SUB-CILL

PAINTED SOFTWOOD WINDOW BOARD. SQUARE EDGE WITH PENCIL ROUND CORNERS OR TILED TO MATCH BATHROOM TILING



70
B SASH WINDOW SECTION

THESE TYPICAL SASH WINDOW DETAILS APPLY TO THE PROPOSED NEW WINDOWS W.G.06 AND W.B.05 IN THE CLOSET WING AT GROUND AND LOWER GROUND FLOORS AND W.B.03 IN THE SIDE LIGHTWELL.



REVISIONS

NOTES
1. ALL DIMENSIONS TO BE CHECKED ON SITE
2. THIS DRAWING IS © OF PICARDI ARCHITECTS
3. ALL STRUCTURE TO STRUCTURAL ENGINEER'S DETAIL AND DESIGN

PICARDI ARCHITECTS		119 OXFORD GARDENS LONDON W10 6NE TEL. 020-89600383	
TITLE		JOB NO	OS20
70 OAKLEY SQUARE, LONDON NW1		DRG NO	70 REV
ALTERATIONS AND REFURBISHMENT		DATE	DEC 2020
PROPOSED CLOSET WING SASH WINDOW DETAILS		SCALE	1:10@A3