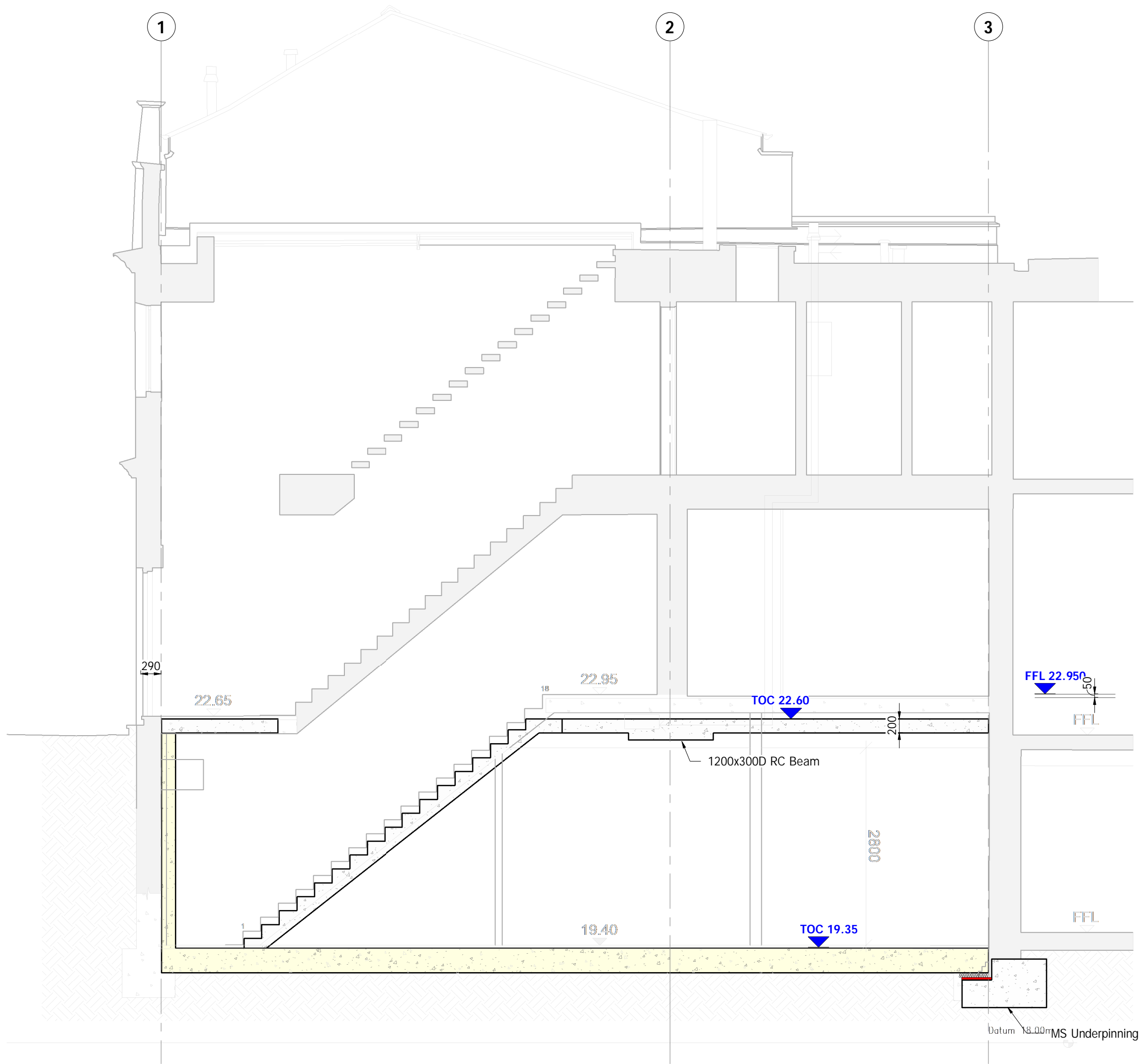



GENERAL NOTES:

1. Do not scale this drawing in either paper or digital form. Use figured dimensions only.
2. All 'Ross & Partners' drawings to be read in conjunction with all relevant Architect's drawings and any discrepancies reported to all relevant parties.
3. This drawing is to be read in conjunction with other 'Ross & Partners' drawings and 'Ross & Partners' Structural Specification documents and any discrepancies reported to all relevant parties.
4. Setting out will be in accordance with the Architect's dimensions and as discussed and agreed between Client, Contractor and the Architects and any discrepancies reported to all relevant parties.
5. For General Notes refer to drawings:
 - 2012-RP-XX-XX-FN-S-001
 - 2012-RP-XX-XX-FN-S-002
 - 2012-RP-XX-XX-FN-S-003



A Section A-A
S-202 1 : 50

3	P03	AA	Issued for Planning Application	2020 12 03
2	P02	AA	Updated to comments	2020 11 06
1	P01	AA	Issued for Comments	2020 08 20
No.	Rev.	By	Description	Date
CLIENT				
COLIN FRASER				
PROJECT MANAGER				
ARCHITECT				
SMITH C-H ARCHITECTS				
M+E ENGINEER				
<div><div></div><div>ROSS & PARTNERS Consulting Civil & Structural Engineers 1 Bastwick Street, Clerkenwell, London, EC1V 3NU tel. 020 755 360 50 ross-partners.co.uk</div></div>				
JOB TITLE				
25 JOHN'S MEWS LONDON				
DRG TITLE				
BUILDING SECTION A				
DRN:	AA	CHKD:	MO'R	DATE: JULY 2020
STATUS:	S4 - FOR STAGE APPROVAL			SCALE: 1 : 50 @ A2
Project/DRG No.		Rev.		
2012-RP-XX- ZZ-DR- S-301		P03		