

KEY

PLANNING APPROVAL BOUNDARY
Application 2015/4819/P

SOFT LANDSCAPE

SHRUB PLANTING AREAS
To Tom Stuart-Smith details and specifications

PROPOSED TREE PLANTING
To Tom Stuart-Smith details and specifications

PROPOSED MULTI-STEMMED TREE PLANTING
To Tom Stuart-Smith details and specifications

HARD SURFACING: SANDSTONE

PAVING TYPE 1a: To Pavements
600mm - 900mm length x 600mm width x 50mm depth
Diamond Wire Cut Scoutmoor Yorkstone by Marshalls or equal and approved
6mm mortar joints
Refer to drawing ALD766A_LD701

PAVING TYPE 2: R3 Envelope
400mm length x 200mm width x 50mm depth
Diamond Wire Cut Scoutmoor Yorkstone by Marshalls or equal and approved
6mm mortar joints
Refer to drawing ALD766A_LD702 & ALD766A_LD722

PAVING TYPE 3: To Jellicoe Gardens
ROW A: 644/744/844mm length x 744mm width x 50mm depth
ROW B: 644/744/844mm length x 644mm width x 50mm depth
ROW C: 544/744/844mm length x 544mm width x 50mm depth
ROW D: 444/544/644mm length x 444mm width x 50mm depth
Diamond Wire Cut Scoutmoor Yorkstone by Marshalls or equal and approved
6mm mortar joints
Refer to drawing ALD766A_LD703

TACTILE PAVING: Corduroy paving - Jellicoe Garden steps
length varies x 394mm width x 50mm depth tactile corduroy Scoutmoor Yorkstone by Marshalls or equal and approved.
ALD766A_LD750 - LD760 for details

STEP UNIT: Jellicoe Garden steps
Solid Scoutmoor Yorkstone step units with black granite nosing by Maylms or equal and approved. With stainless steel handrails and integrated lighting. Refer to drawings ALD766A_LD750 - LD760 for details

PAVING ADJUSTMENT ROWS
Reduced width and/or angled rows of Scoutmoor Yorkstone paving to achieve alignments with other paving features (tactile paving, granite setts etc.)

HARD SURFACING: GRANITE

PAVING TYPE 4: West of R3
200mm / 250mm / 300mm lengths x 100mm width x 150mm depth
Granite setts bush hammered by Maylms or equal & approved
Colour mix: 85% millennium mauve
15% millennium pink
10-15mm mortar joint
Refer to drawing ALD766A_LD704

TREE SURROUND
6-10mm Royal White Granite Stone Chippings with metal edge frame and rough reclaimed granite sett surround, precured from site and/or approved source. Contractor to confirm mix availability.
Refer to drawing ALD766A_LD706 & ALD766A_LD770

WATER FEATURE: GRANITE

WATER FEATURE: RILLS & POOLS
Angola Black Granite, Flamed finish by Maylms or Equal & approved, dimensions vary, for granite details refer to drawings ALD766A_LD715 - LD747, ALD766A_WF321 - WF324 for water feature details refer to The Fountain Workshop drawings

KERBS & EDGES

GRANITE KERBS
300mm wide x 200mm depth x 900mm length
Royal White granite stone kerb, Fine Picked by Maylms
Refer to Stantec drawings for details

STRETCHER COURSE 2: around building R3
400mm wide (oversized) x 600mm long x 50mm depth Scoutmoor Yorkstone stretcher course. Diamond Wire Cut by Marshalls or equal & approved. Oversized width - to be cut on site to suit R3 facade.
Refer to drawing ALD766A_LD712

ALUMINIUM ANGLE EDGE: To Jellicoe Garden Planters
6.5mm wide x 75mm High rigid aluminium edge. Atuxcel by Kinley Systems or equal & approved. Note: Special edge units required at level transitions adjacent steps. Refer to drawing ALD766A_LD713 & ALD766A_LD750 - LD760

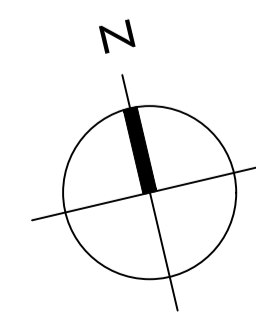
FURNITURE

BENCH TYPE 1
To Jellicoe Gardens, Meko bench seasoned european oak
2000mm length x 471mm width x 448mm height by Wales and Wales or equal and approved

LIGHTING FITTINGS
to Spiers and Major details and specifications

PAVILLION
To Bell Phillip Associates details and specification

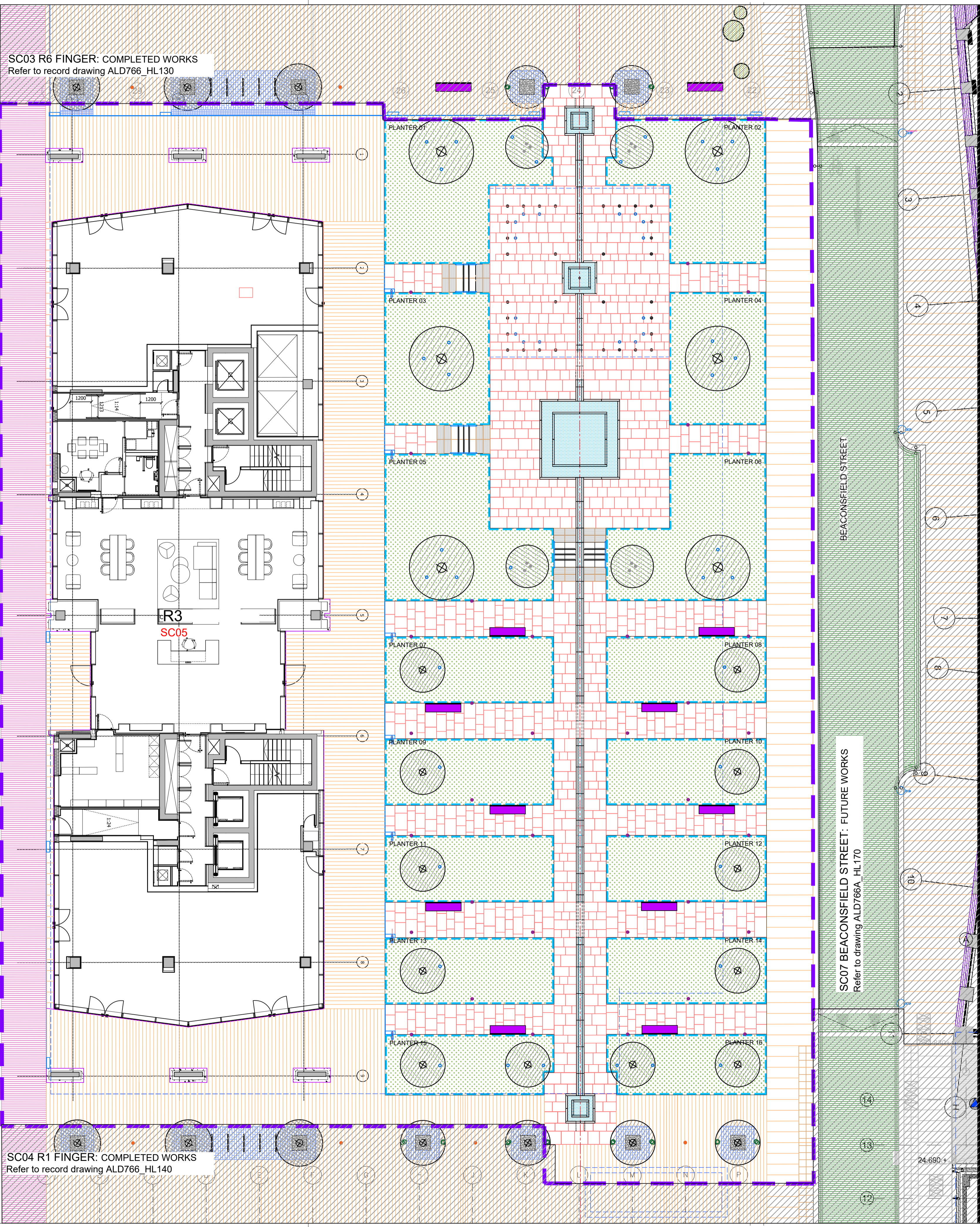
DEMARICATION STUD
To demarcate spillout areas and loading bays
30mm Ø stainless steel Grade 316 demarcation stud by Kent Stainless or equal and approved. Refer to drawing



CUBITT PARK

SC03 R6 FINGER: COMPLETED WORKS
Refer to record drawing ALD766_HL130

SC04 R1 FINGER: COMPLETED WORKS
Refer to record drawing ALD766_HL140



All dimensions to be verified on site. Figure dimensions to take precedence to these scaled. Any areas indicated on this drawing are for guidance only, no responsibility is taken for their accuracy.
The drawing is the property of Applied Landscape Design Limited. Copyright is reserved by them and the drawing is issued on the condition that it is not copied, reproduced, retained or disclosed to any unauthorized person, either wholly or in part without the written consent in writing of Applied Landscapes.
© 2020 Applied Landscape Design Limited. All rights reserved.

CDM/H&S:
The works illustrated on this drawing have been reviewed against the Design CDM Risk Register and significant risks are noted as:
Construction:
• Handling heavy materials
• Working at height
• Working adjacent to existing structures and buildings
• Trees in Highways
Maintenance:
• Light bulb changing

NOTES / KEY:

REFERENCE DRAWINGS/DOCUMENTS

no.	issued	date
P01	Issue for Planning	22.12.2020

REVISIONS

no.	issued	date
-----	--------	------

CLIENT:
maylim

LANDSCAPE ARCHITECT:
The Threshing Barn
Bignell Park Barns
Chatterton, Nr. Bicester
Oxfordshire, OX26 1TD
Tel: 01865 249776
Email: mail@appliedlandscapes.co.uk
ALD
applied landscape design

PROJECT:
**JELICOE GARDENS
KINGS CROSS CENTRAL**

DRAWING TITLE:
**R3 & JELICOE GARDENS
HARD LANDSCAPE LAYOUT
SC05 & SC06**

no.	issued	date
P01	Issue for Planning	22.12.2020

CLIENT:
maylim

LANDSCAPE ARCHITECT:
The Threshing Barn
Bignell Park Barns
Chatterton, Nr. Bicester
Oxfordshire, OX26 1TD
Tel: 01865 249776
Email: mail@appliedlandscapes.co.uk
ALD
applied landscape design

PROJECT:
**JELICOE GARDENS
KINGS CROSS CENTRAL**

DRAWING TITLE:
**R3 & JELICOE GARDENS
HARD LANDSCAPE LAYOUT
SC05 & SC06**

drawn:	scale:	
CW	1:125 @ A1	
checked:	status:	
KmJ	Planning	
date:	xref file ref:	
06.03.2017	ALD766_HLbaseSC05-06	
PROJECT NO.	DRAWING NUMBER:	REVISION:
ALD766P	HL192	P01