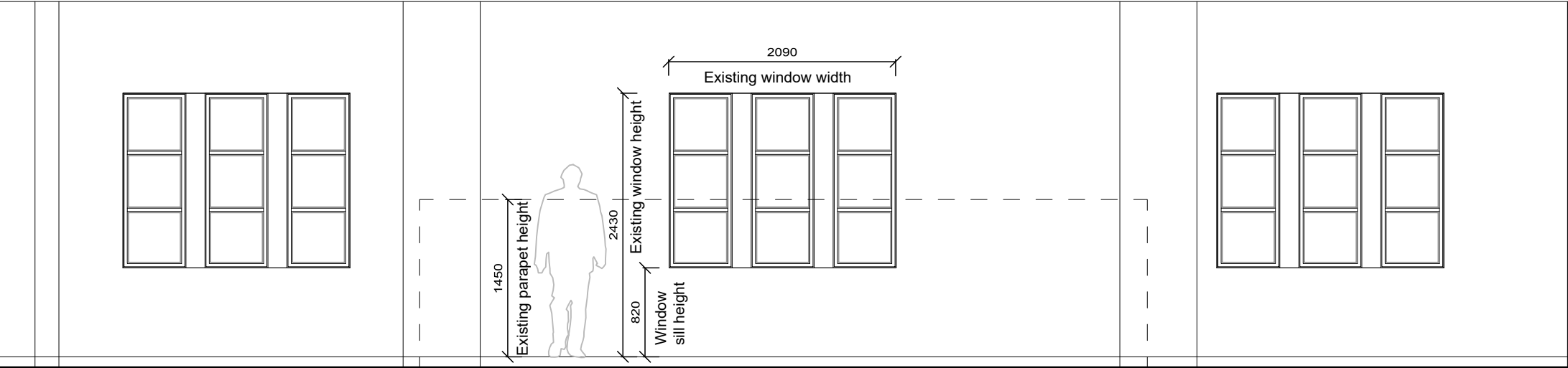


Proposed door

Metal framed, thermally broken, double glaze doors, to match window materials and colour. Height and width as existing window opening

Active leaf (right side) 1350x20 Satin finished SS Pull handle. Manual deadlock, key on inside. Passive leaf (left side) top and bottom concealed shoot bolts. Both leaves with concealed adjustable friction door restrictor stay.

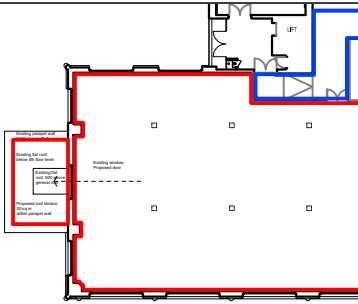


Existing Window

Fourth floor interior looking south



Based on information supplied by others
Do not scale from this drawing



| | | | |
|---|----|----------|-------------------------|
| B | AA | 17/12/20 | Ironmongery notes added |
| A | AA | 14/12/20 | Additional notes |

| Rev | Drawn | Date | Description |
|-----|-------|------|-------------|
|-----|-------|------|-------------|

4

Contract
Greater London House
Hampstead Road
London NW1 7QX

Drawing Title
Fourth Floor
Roof Terrace (South)
Existing window

EXISTING

cds

CDS PROJECTS LTD
22 Woodbastwick Road, London SE26 5LH
M 07802 441750

| | | | |
|-------------|--------------|------------|---------------|
| Scales | 1/50 (at A3) | Date | November 2020 |
| Drawn | AA | Checked | |
| Contract No | 20/10/Li | Drawing No | P/03 |
| | | Revision | B |