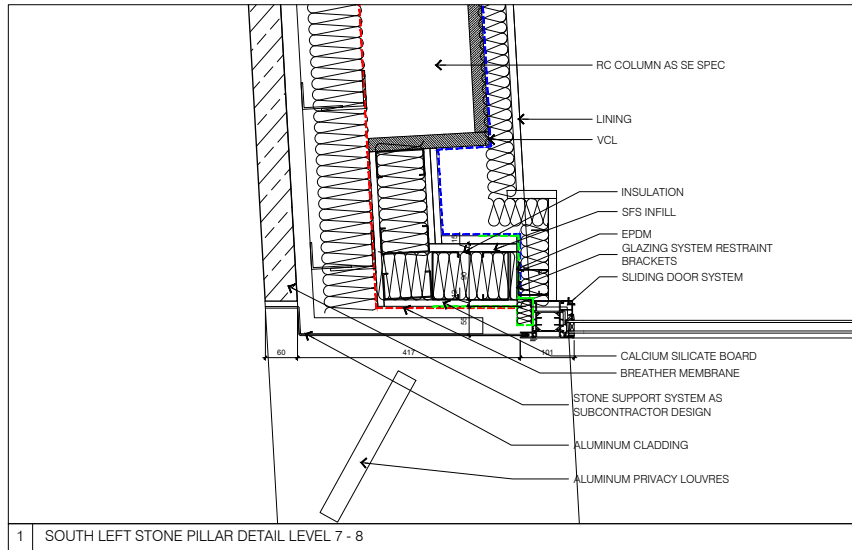


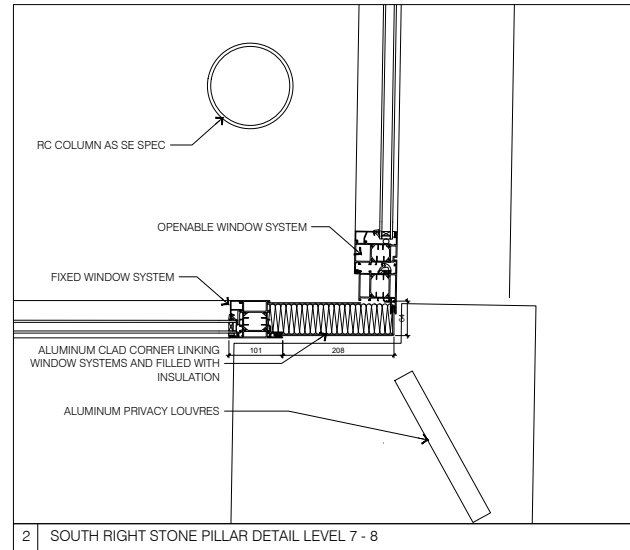
PLANNING ISSUE

GENERAL NOTES

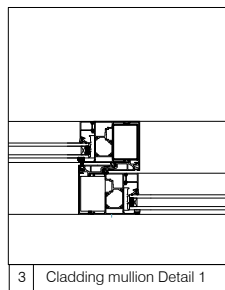
- A. Do not scale from drawings. Check all dimensions and conditions on site.
- B. All works to be carried out in accordance with current health and safety including CDM regulations. All works to comply with current British standards and regulations, codes of practice and building regulations, and appropriate European standards.
- C. All structural work is to be carried out in accordance with the structural engineers details and calculations.
- D. Precise positions of all fixtures and fittings are subject to confirmation on site.
- E. All drawings are to be read in conjunction with the relevant specification and schedules.



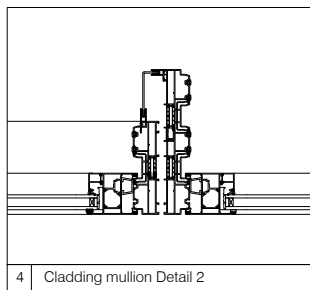
1 SOUTH LEFT STONE PILLAR DETAIL LEVEL 7 - 8



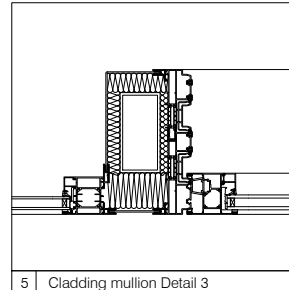
2 SOUTH RIGHT STONE PILLAR DETAIL LEVEL 7 - 8



3 Cladding mullion Detail 1



4 Cladding mullion Detail 2



5 Cladding mullion Detail 3

P1	30.11.20	Planning Issue	JM	KS
rev	date	description	drawn	checked

20004
 294-295 High Holborn
 South External Details level 7 to 8 and mullions
 1:5 @ A1, 1:10 @ A3

3013