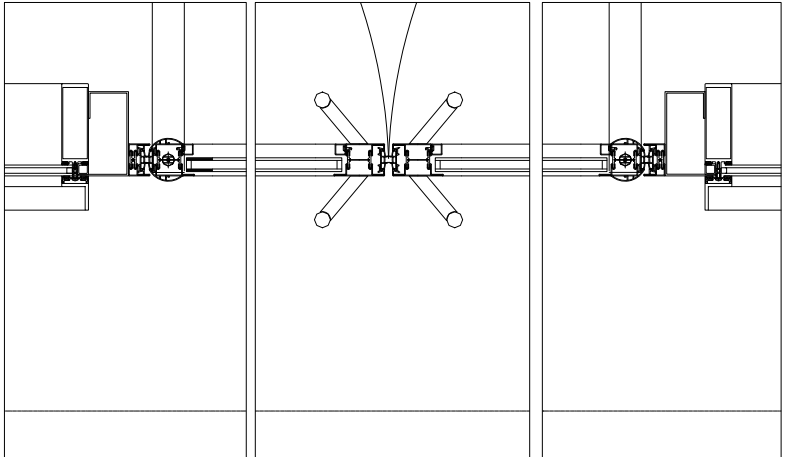
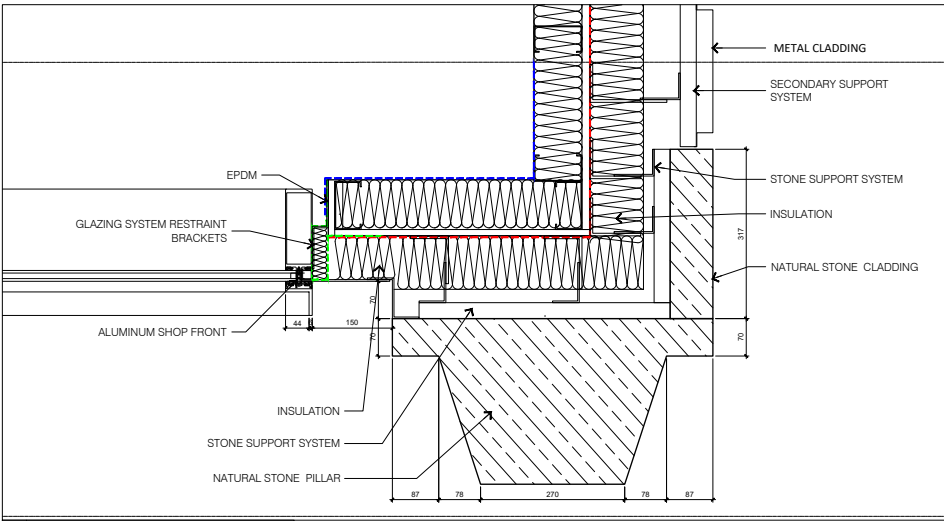


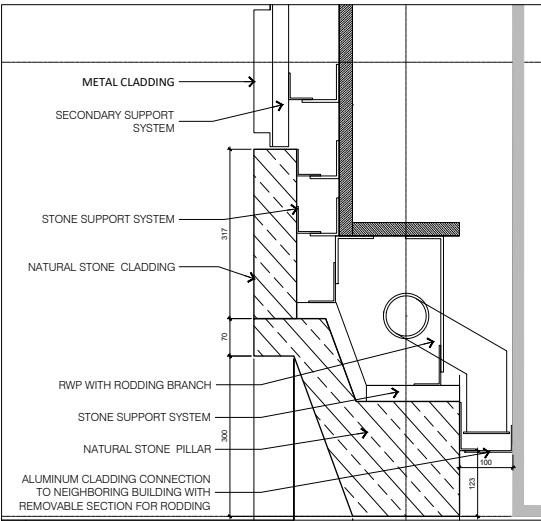
1 SHOP FRONT ENTRANCE DETAILS



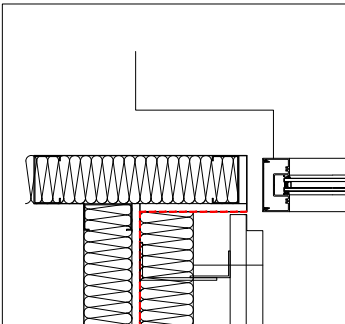
2 SHOP FRONT ENTRANCE DOOR DETAILS



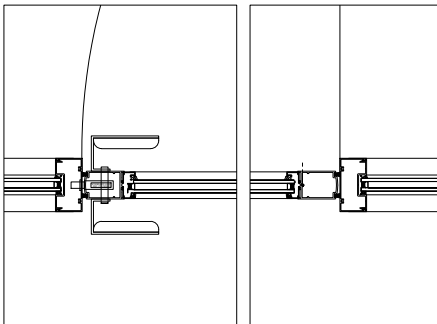
3 RESIDENTS ENTRANCE DETAILS



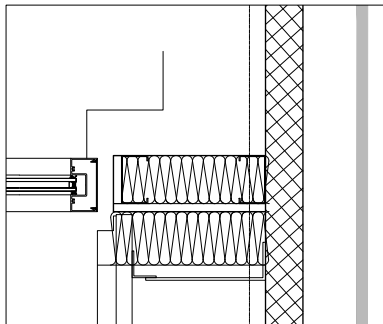
4 RESIDENTS ENTRANCE DETAILS



5 RESIDENTS ENTRANCE DOOR DETAILS



6 RESIDENTS ENTRANCE DOOR DETAILS



7 RESIDENTS ENTRANCE DOOR DETAILS

PLANNING ISSUE

- GENERAL NOTES
- A. Do not scale from drawings. Check all dimensions and conditions on site.
 - B. All works to be carried out in accordance with current health and safety including CDM regulations. All works to comply with current British standards and regulations, codes of practice and building regulations, and appropriate European standards.
 - C. All structural work is to be carried out in accordance with the structural engineers details and calculations.
 - D. Precise positions of all fixtures and fittings are subject to confirmation on site.
 - E. All drawings are to be read in conjunction with the relevant specification and schedules.

P1	30.11.20	Planning Issue	JM	KS
rev	date	description	drawn	checked
001				
002				
003				
004				
005				
006				
007				
008				
009				
010				
011				
012				
013				
014				
015				
016				
017				
018				
019				
020				
021				
022				
023				
024				
025				
026				
027				
028				
029				
030				
031				
032				
033				
034				
035				
036				
037				
038				
039				
040				
041				
042				
043				
044				
045				
046				
047				
048				
049				
050				
051				
052				
053				
054				
055				
056				
057				
058				
059				
060				
061				
062				
063				
064				
065				
066				
067				
068				
069				
070				
071				
072				
073				
074				
075				
076				
077				
078				
079				
080				
081				
082				
083				
084				
085				
086				
087				
088				
089				
090				
091				
092				
093				
094				
095				
096				
097				
098				
099				
100				

