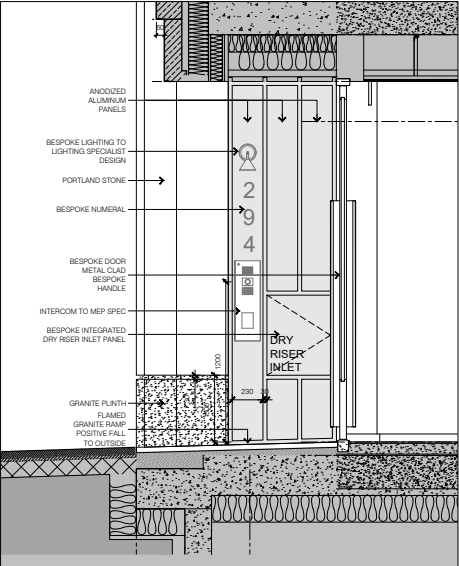
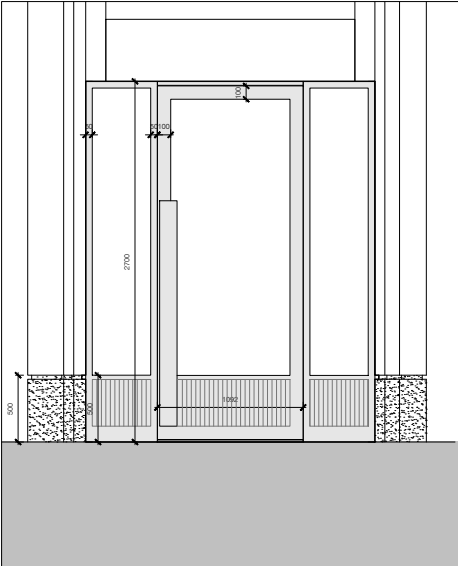


GENERAL NOTES

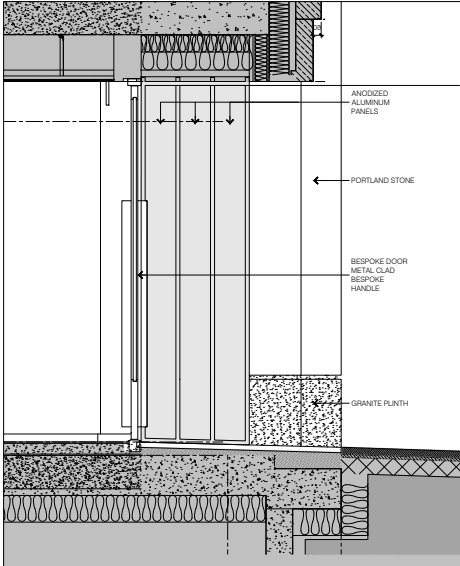
- A. Do not scale from drawings. Check all dimensions and conditions on site.
- B. All works to be carried out in accordance with current health and safety including CDM regulations. All works to comply with current British standards and regulations, codes of practice and building regulations, and appropriate European standards.
- C. All structural work is to be carried out in accordance with the structural engineers details and calculations.
- D. Precise positions of all fixtures and fittings are subject to confirmation on site.
- E. All drawings are to be read in conjunction with the relevant specification and schedules.



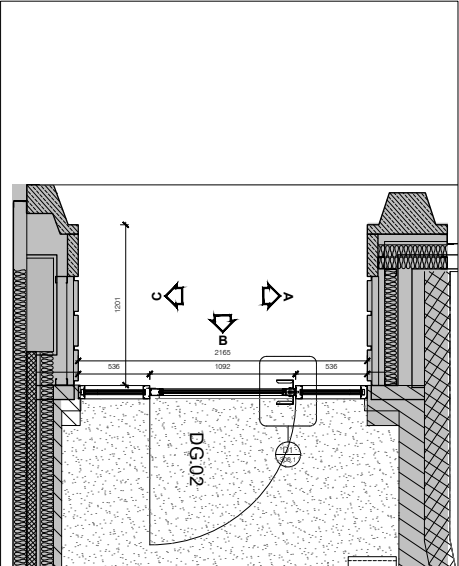
Residential Entrance Elevation A



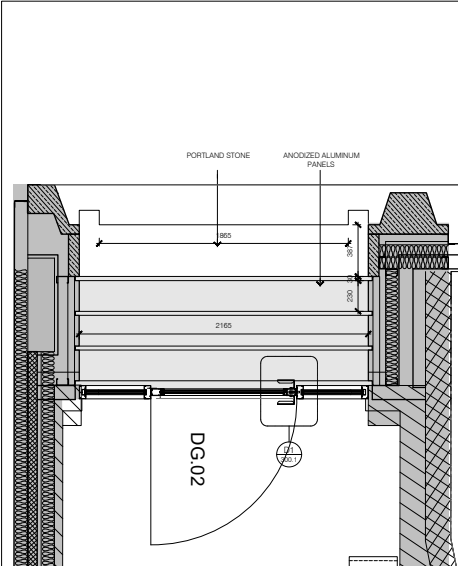
Residential Entrance Elevation B



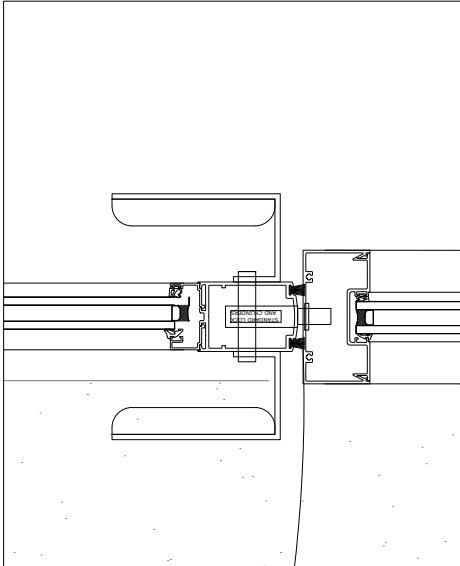
Residential Entrance Elevation C



Residential Entrance Plan



Residential Entrance RCP



DOOR HANDLE @ 1:2