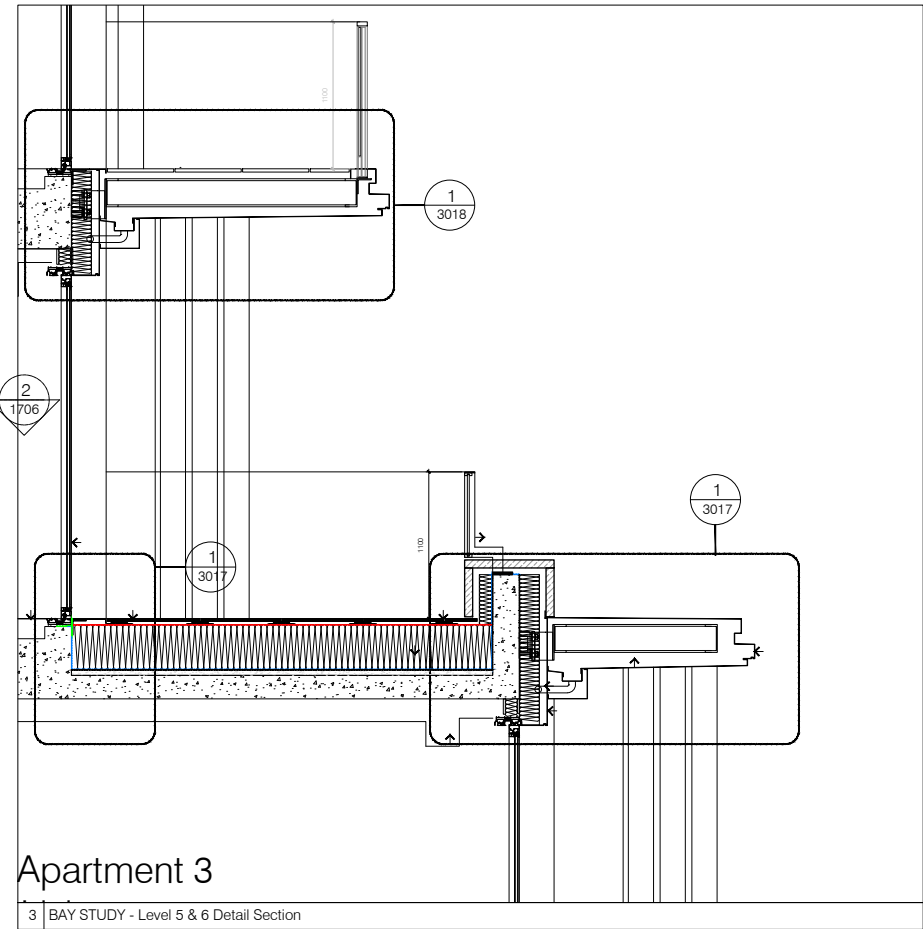
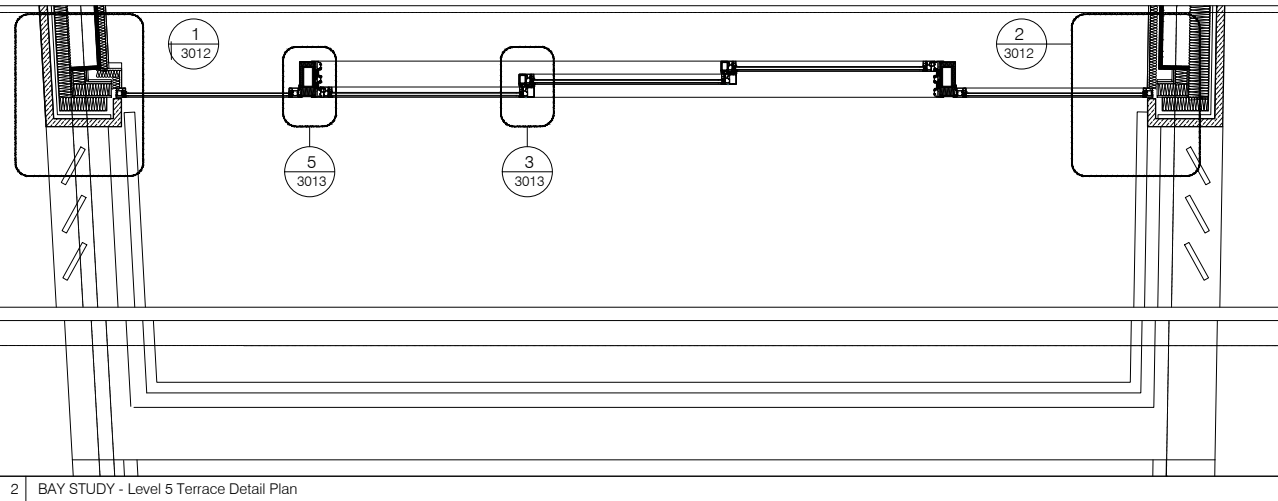


1 BAY STUDY - South Detail Elevation



### Apartment 3

3 BAY STUDY - Level 5 & 6 Detail Section



2 BAY STUDY - Level 5 Terrace Detail Plan

### PLANNING ISSUE

#### GENERAL NOTES

- A. Do not scale from drawings. Check all dimensions and conditions on site.
- B. All works to be carried out in accordance with current health and safety including CDM regulations. All works to comply with current British standards and regulations, codes of practice and building regulations, and appropriate European standards.
- C. All structural work is to be carried out in accordance with the structural engineers details and calculations.
- D. Precise positions of all fixtures and fittings are subject to confirmation on site.
- E. All drawings are to be read in conjunction with the relevant specification and schedules.

rev	date	description	drawn	checked
P1	30.11.20	Planning Issue	JM	KS
chng no.		job no.	20004	
		1706		
		294-295 High Holborn		
		Bay Study - South Elevation - 5th Floor		
		1:10 @ A1, 1:20 @ A3		