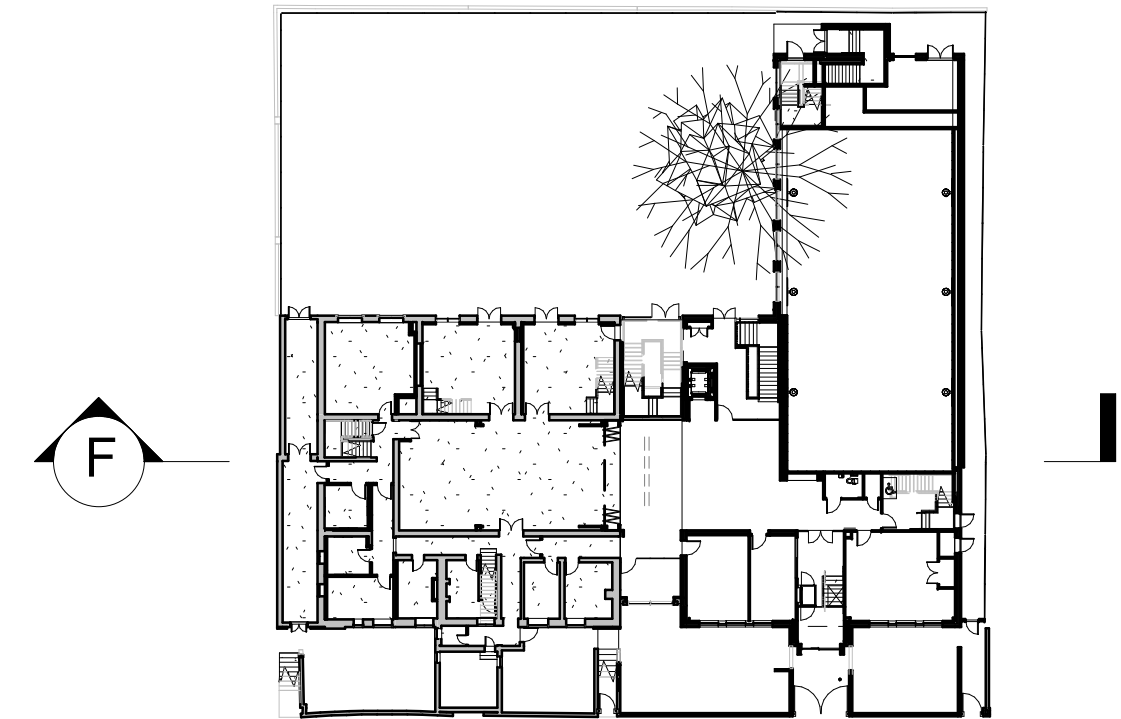




Proposed Section F  
1 : 100



Reference Plan

**Notes**

This drawing is subject to full verification by measured and structural survey, engineering design, confirmation of boundaries, easements and covenants.

This drawing is subject to full consultation with statutory bodies and associated consents.

The information is based upon OS information and topographical information supplied by third parties.

0 5 10 m

DATE	REVISION	REV	DR	CHK
08.05.17	Revised layout, massing and details in response to consultation comments response to consultation comments	A	JL	JL
25.09.18	Reduced Scheme for Pre Application	B	CM	KSB
04.03.19	PLANNING	C	CM	KSB
26.11.20	PLANNING	D	SC	KSB

This drawing has been prepared solely for the use of The Hall School and there are no representations of any kind made by NORR Consultants Limited to any party with whom NORR Consultants Limited has not entered into a contract

This drawing must not be used, reproduced or revised without written permission.

This drawing shall not be used for construction purposes until the "CONSTRUCTION" status appears under the Sheet Status.

Constructors must only work to figured dimensions which are to be checked on site. Do not scale from hard copy drawings

Keyplan

North Arrow

Detail Symbol

Detail No.  
Sheet No.

**NORR**  
NORR Consultants Limited.  
An Ingenium International Company

Tennyson House,  
159 - 165 Great Portland Street,  
London W1W 5PA  
England, UK  
norr.com

Drawn CB	Date 4.11.16
Checked KS	Date 4.11.16
Scale As indicated @ A1	
Client The Hall School	
Project The Hall Senior School	
Drawing Title Proposed Section F	
Sheet Status PLANNING	
Project No. IALN14-0046	
Drawing No. P32-SC-16	Rev. D