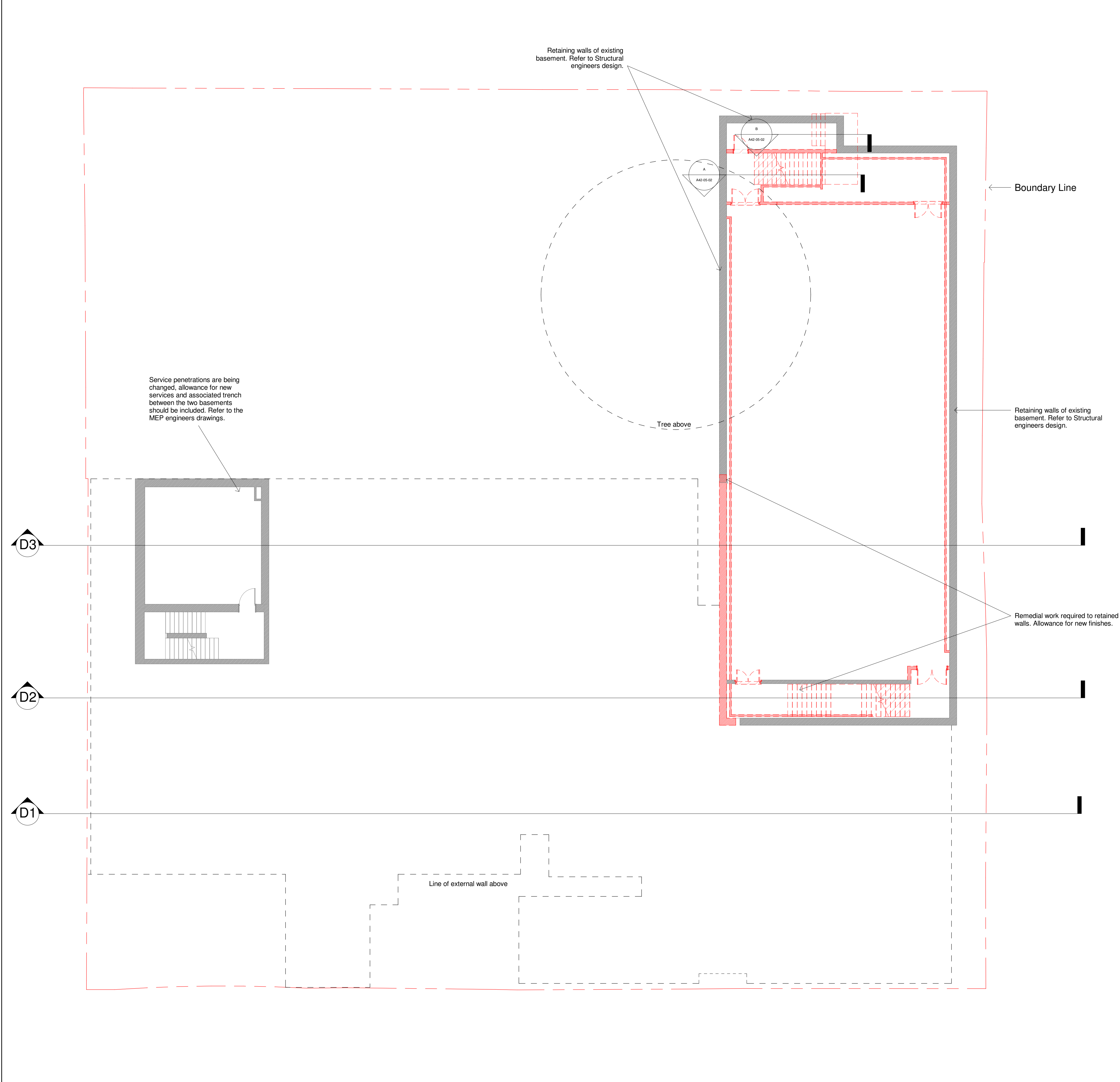


ISO A1 - 594mmx841mm



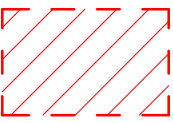
Notes

This drawing is subject to full verification by measured and structural survey, engineering design, confirmation of boundaries, easements and covenants.

This drawing is subject to full consultation with statutory bodies and associated consents.

The information is based upon OS information and topographical information supplied by third parties.

Demolition Legend



Area to be Demolished, include forming new openings in structure, removal / relocation of M+E services to suit, removal of existing windows / doors / stairs / louvres / lighting fixtures.

IMPORTANT NOTE: READ IN CONJUNCTION WITH:

- NBS C20, C30, C40, C41, C42, C51, C90 CLAUSES

- A40-SH-01.02.03 RDS REFURB SCHEDULE AND THE RELEVANT A40 OR A41 RDS'S.

DATE	REVISION	REV	DRW	CHK
28.06.19	STAGE 4 - Interim Submission	P01	CM	KSB
02.08.19	STAGE 4 ISSUE	P02	CM / SC / IIP	KSB

This drawing has been prepared solely for the use of The Hall School and there are no representations of any kind made by NORR Consultants Limited to any party with whom NORR Consultants Limited has not entered into a contract

This drawing must not be used, reproduced or revised without written permission.

This drawing shall not be used for construction purposes until the "CONSTRUCTION" status appears under the Sheet Status.

Constructors must only work to figured dimensions which are to be checked on site. Do not scale from hard copy drawings

Keyplan

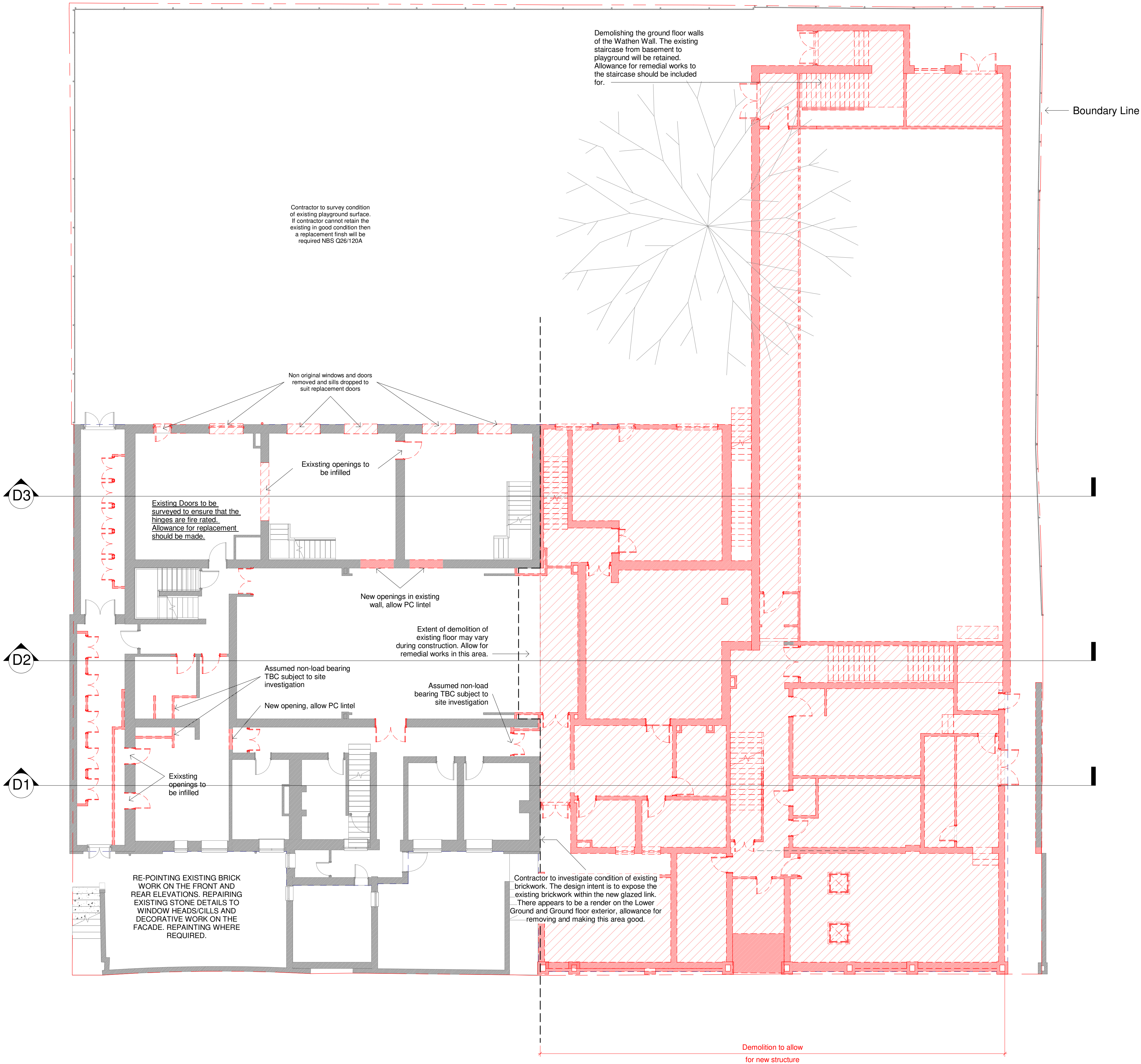
North Arrow

Detail Symbol

NORR
NORR Consultants Limited.
An Ingenium International Company

Tennyson House,
159 - 165 Great Portland Street,
London W1W 5PA
England, UK
norr.com

Drawn CM	Date 19.06.19
Checked KS	Date 19.06.19
Scale 1 : 100 @ A1	
Client The Hall School	
Project The Hall Senior School	
Drawing Title Demolition Plans- Basement	
Sheet Status D2 - FOR TENDER	
Project No. IALN14-0046	
Drawing No. A80-B1-00	Rev. P02



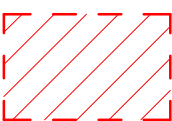
Notes

This drawing is subject to full verification by measured and structural survey, engineering design, confirmation of boundaries, easements and covenants.

This drawing is subject to full consultation with statutory bodies and associated consents.

The information is based upon OS information and topographical information supplied by third parties.

Demolition Legend

 Area to be Demolished, include forming new openings in structure, removal / relocation of M+E services to suit, removal of existing windows / doors / stairs / louvres / lighting fixtures.

IMPORTANT NOTE: READ IN CONJUNCTION WITH:

- NBS C20, C30, C40, C41, C42, C51, C90 CLAUSES

- A40-SH-01.02.03 RDS REFURB SCHEDULE AND THE RELEVANT A40 OR A41 RDS'S.

DATE	REVISION	REV	DRW	CHK
28.06.19	STAGE 4 - Interim Submission	P01	CM	KSB
02.08.19	STAGE 4 ISSUE	P02	CM / SC / IIP	KSB

This drawing has been prepared solely for the use of The Hall School and there are no representations of any kind made by NORR Consultants Limited to any party with whom NORR Consultants Limited has not entered into a contract

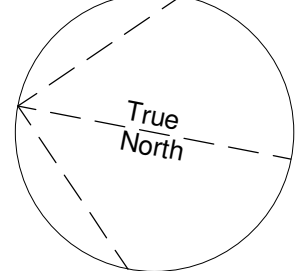
This drawing must not be used, reproduced or revised without written permission.

This drawing shall not be used for construction purposes until the "CONSTRUCTION" status appears under the Sheet Status.

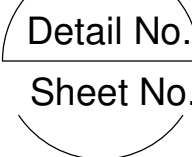
Constructors must only work to figured dimensions which are to be checked on site. Do not scale from hard copy drawings

Keyplan

North Arrow



Detail Symbol




NORR Consultants Limited.
An Ingenium International Company

Tennyson House,
159 - 165 Great Portland Street,
London W1W 5PA
England, UK
norrr.com

Drawn CM	Date 19.06.19
Checked KS	Date 19.06.19
Scale 1 : 100 @ A1	
Client The Hall School	
Project The Hall Senior School	
Drawing Title Demolition Plans- Lower Ground Floor	
Sheet Status D2 - FOR TENDER	
Project No. IALN14-0046	
Drawing No. A80-LG-00	Rev. P02

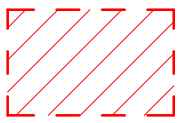
Notes

This drawing is subject to full verification by measured and structural survey, engineering design, confirmation of boundaries, easements and covenants.

This drawing is subject to full consultation with statutory bodies and associated consents.

The information is based upon OS information and topographical information supplied by third parties.

Demolition Legend

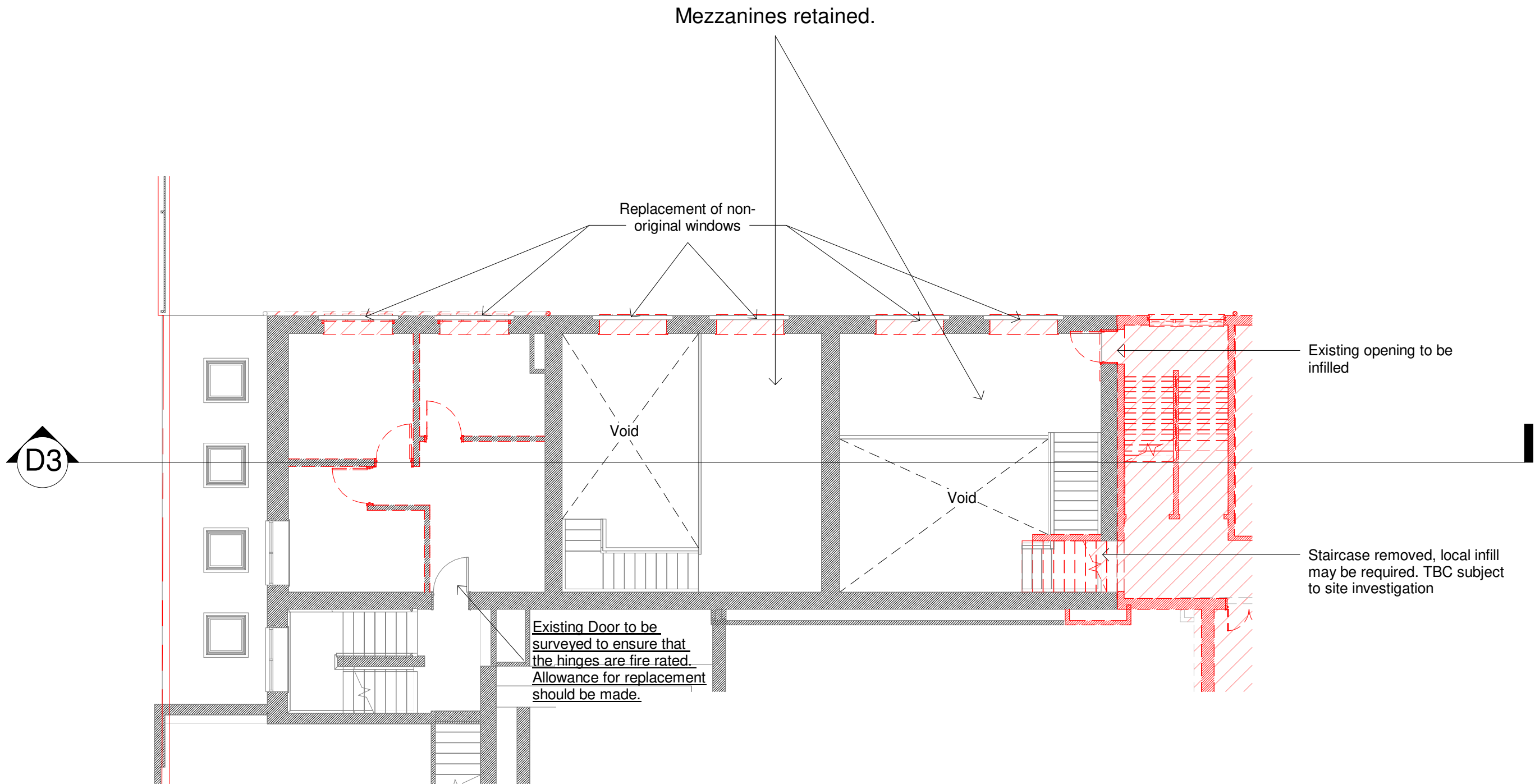


Area to be Demolished, include forming new openings in structure, removal / relocation of M+E services to suit, removal of existing windows / doors / stairs / louvres / lighting fixtures.

IMPORTANT NOTE: READ IN CONJUNCTION WITH:

- NBS C20, C30, C40, C41, C42, C51, C90 CLAUSES

- A40-SH-01.02.03 RDS REFURB SCHEDULE AND THE RELEVANT A40 OR A41 RDS'S.



DATE	REVISION	REV	DRW	CHK
28.06.19	STAGE 4 - Interim Submission	P01	CM	KSB
02.08.19	STAGE 4 ISSUE	P02	CM / SC / IIP	KSB

This drawing has been prepared solely for the use of The Hall School and there are no representations of any kind made by NORR Consultants Limited to any party with whom NORR Consultants Limited has not entered into a contract

This drawing must not be used, reproduced or revised without written permission.

This drawing shall not be used for construction purposes until the "CONSTRUCTION" status appears under the Sheet Status.

Constructors must only work to figured dimensions which are to be checked on site. Do not scale from hard copy drawings

Keyplan

North Arrow

Detail Symbol

Detail No.

Sheet No.

NORR

NORR Consultants Limited.

An Ingenium International Company

Tennyson House,

159 - 165 Great Portland Street,

London W1W 5PA

England, UK

norrr.com

Drawn CM	Date 19.06.19
Checked KS	Date 19.06.19
Scale 1 : 100 @ A1	
Client The Hall School	
Project The Hall Senior School	
Drawing Title Demolition Plans- Mezzanine	
Sheet Status D2 - FOR TENDER	
Project No. IALN14-0046	
Drawing No. A80-M1-00	Rev. P02

Notes

This drawing is subject to full verification by measured and structural survey, engineering design, confirmation of boundaries, easements and covenants.

This drawing is subject to full consultation with statutory bodies and associated consents.

The information is based upon OS information and topographical information supplied by third parties.

Demolition Legend

Area to be Demolished, include forming new openings in structure, removal / relocation of M+E services to suit, removal of existing windows / doors / stairs / louvres / lighting fixtures.

IMPORTANT NOTE: READ IN CONJUNCTION WITH:

- NBS C20, C30, C40, C41, C42, C51, C90 CLAUSES

- A40-SH-01,02,03 RDS REFURB SCHEDULE AND THE RELEVANT A40 OR A41 RDS'S.

DATE	REVISION	REV	DRW	CHK
28.06.19	STAGE 4 - Interim Submission	P01	CM	KSB
02.08.19	STAGE 4 ISSUE	P02	CM / SC / IIP	KSB

This drawing has been prepared solely for the use of The Hall School and there are no representations of any kind made by NORR Consultants Limited to any party with whom NORR Consultants Limited has not entered into a contract

This drawing must not be used, reproduced or revised without written permission.

This drawing shall not be used for construction purposes until the "CONSTRUCTION" status appears under the Sheet Status.

Constructors must only work to figured dimensions which are to be checked on site. Do not scale from hard copy drawings

Keyplan

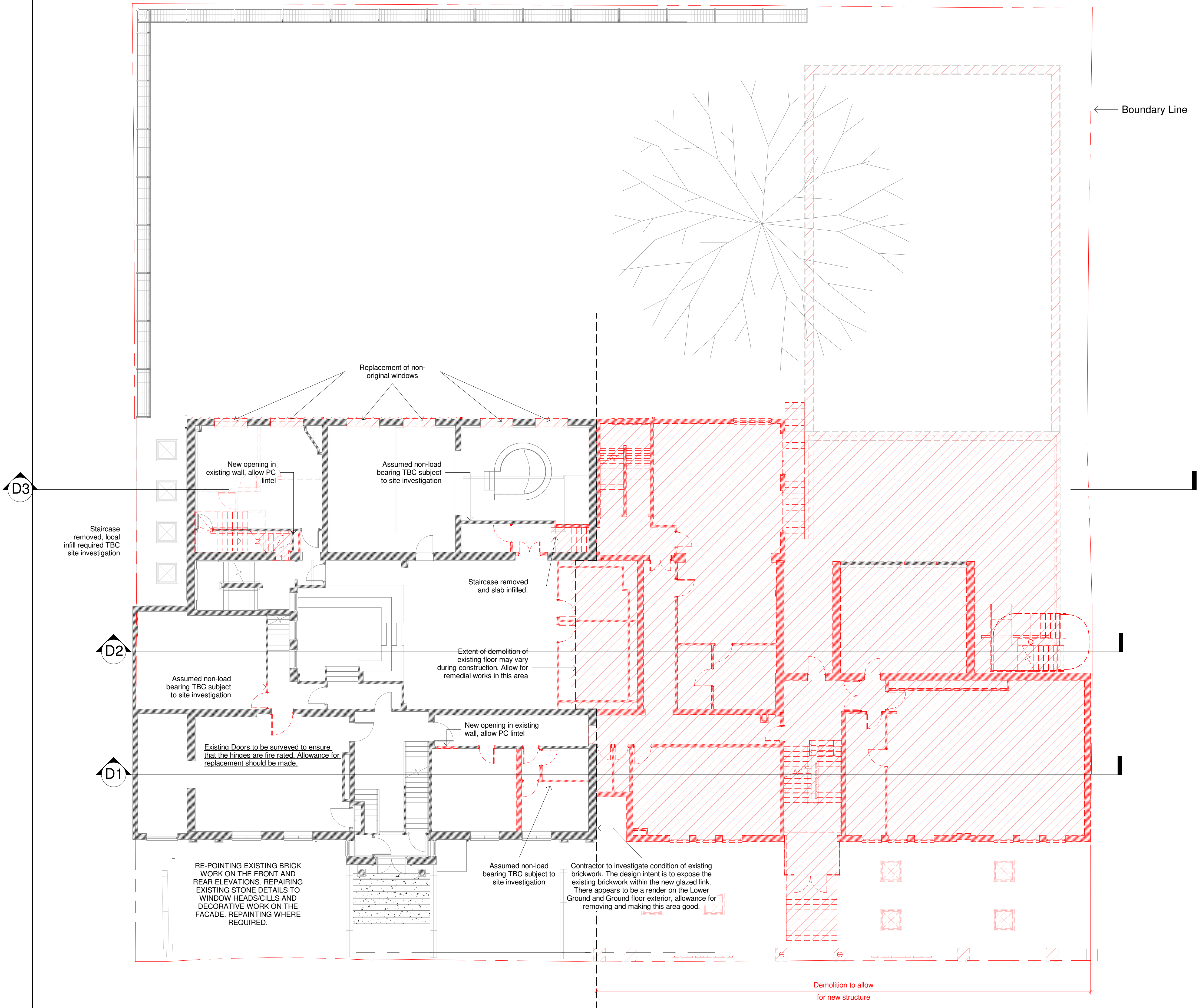
North Arrow

Detail Symbol

NORR
NORR Consultants Limited.
An Ingenium International Company

Tennyson House,
159 - 165 Great Portland Street,
London W1W 5PA
England, UK
norr.com

Drawn CM	Date 19.06.19
Checked KS	Date 19.06.19
Scale 1 : 100 @ A1	
Client The Hall School	
Project The Hall Senior School	
Drawing Title Demolition Plans- Ground Floor	
Sheet Status D2 - FOR TENDER	
Project No. IALN14-0046	
Drawing No. A80-00-00	Rev. P02



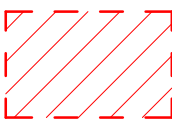
Notes

This drawing is subject to full verification by measured and structural survey, engineering design, confirmation of boundaries, easements and covenants.

This drawing is subject to full consultation with statutory bodies and associated consents.

The information is based upon OS information and topographical information supplied by third parties.

Demolition Legend



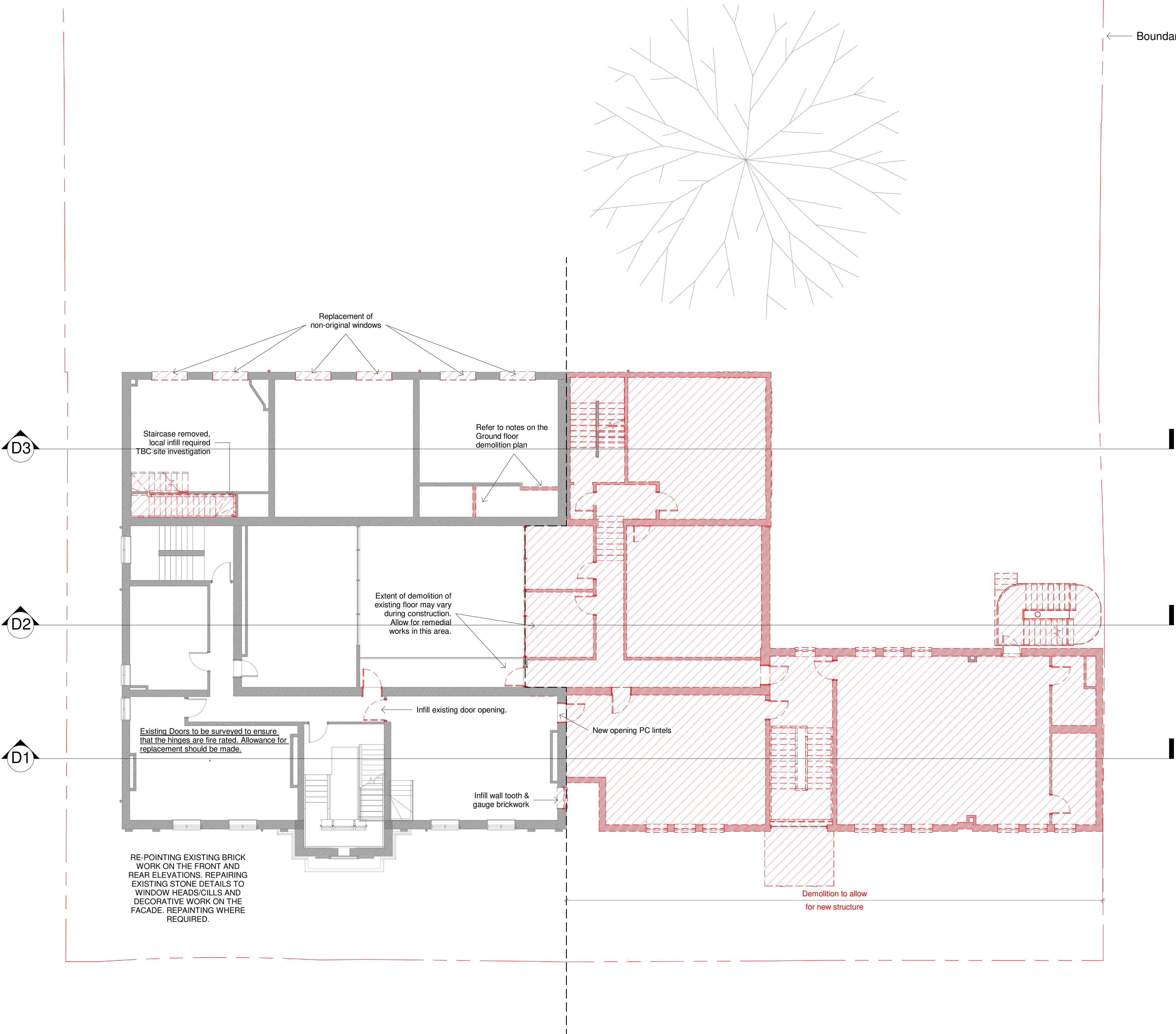
Area to be Demolished, include forming new openings in structure, removal / relocation of M+E services to suit, removal of existing windows / doors / stairs / louvres / lighting fixtures.

IMPORTANT NOTE: READ IN CONJUNCTION WITH:

- NBS C20, C30, C40, C41, C42, C51, C90 CLAUSES

- A40-SH-01,02,03 RDS REFURB SCHEDULE AND THE RELEVANT A40 OR A41 RDS'S.

← Boundary Line



DATE	REVISION	REV	DRW	CHK
28.06.19	STAGE 4 - Interim Submission	P01	CM	KSB
02.08.19	STAGE 4 ISSUE	P02	CM / SC / IIP	KSB

This drawing has been prepared solely for the use of The Hall School and there are no representations of any kind made by NORR Consultants Limited to any party with whom NORR Consultants Limited has not entered into a contract

This drawing must not be used, reproduced or revised without written permission.

This drawing shall not be used for construction purposes until the "CONSTRUCTION" status appears under the Sheet Status.

Constructors must only work to figured dimensions which are to be checked on site. Do not scale from hard copy drawings

Keyplan

North Arrow

Detail Symbol

NORR
NORR Consultants Limited.
An Ingenium International Company

Tennyson House,
159 - 165 Great Portland Street,
London W1W 5PA
England, UK
norr.com

Drawn CM	Date 19.06.19
Checked KS	Date 19.06.19
Scale 1 : 100 @ A1	
Client The Hall School	
Project The Hall Senior School	
Drawing Title Demolition Plans- First Floor	
Sheet Status D2 - FOR TENDER	
Project No. IALN14-0046	
Drawing No. A80-01-00	Rev. P02

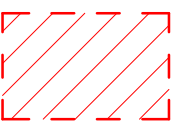
Notes

This drawing is subject to full verification by measured and structural survey, engineering design, confirmation of boundaries, easements and covenants.

This drawing is subject to full consultation with statutory bodies and associated consents.

The information is based upon OS information and topographical information supplied by third parties.

Demolition Legend



Area to be Demolished, include forming new openings in structure, removal / relocation of M+E services to suit, removal of existing windows / doors / stairs / louvres / lighting fixtures.

IMPORTANT NOTE: READ IN CONJUNCTION WITH:

- NBS C20, C30, C40, C41, C42, C51. C90 CLAUSES

- A40-SH-01,02,03 RDS REFURB SCHEDULE AND THE RELEVANT A40 OR A41 RDS'S.

DATE	REVISION	REV	DRW	CHK
28.06.19	STAGE 4 - Interim Submission	P01	CM	KSB
02.08.19	STAGE 4 ISSUE	P02	CM / SC / IIP	KSB

This drawing has been prepared solely for the use of The Hall School and there are no representations of any kind made by NORR Consultants Limited to any party with whom NORR Consultants Limited has not entered into a contract

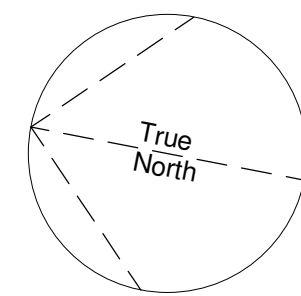
This drawing must not be used, reproduced or revised without written permission.

This drawing shall not be used for construction purposes until the "CONSTRUCTION" status appears under the Sheet Status.

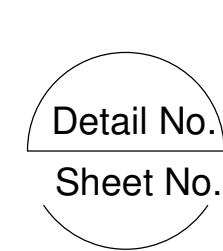
Constructors must only work to figured dimensions which are to be checked on site. Do not scale from hard copy drawings

Keyplan

North Arrow



Detail Symbol

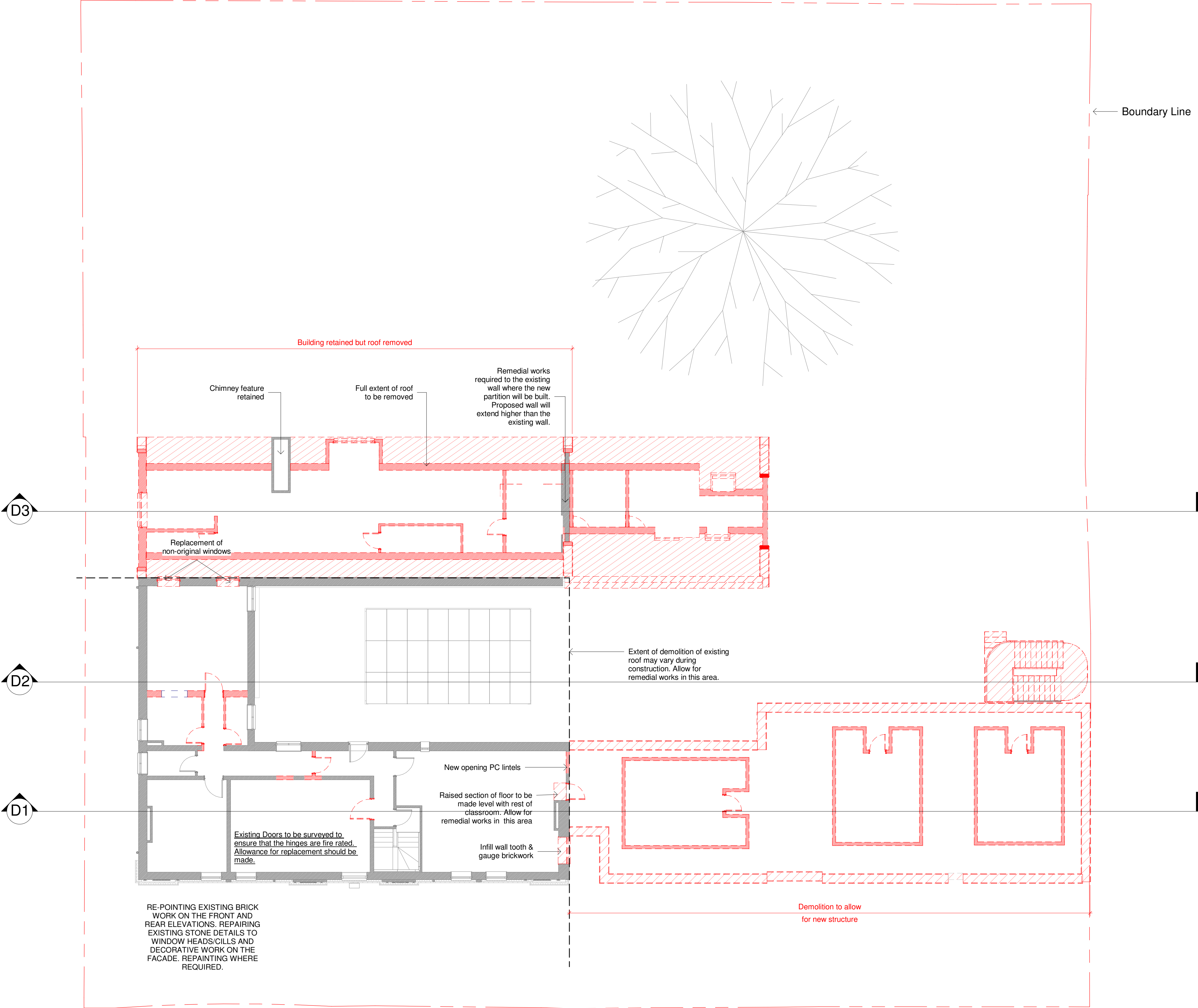


NORR

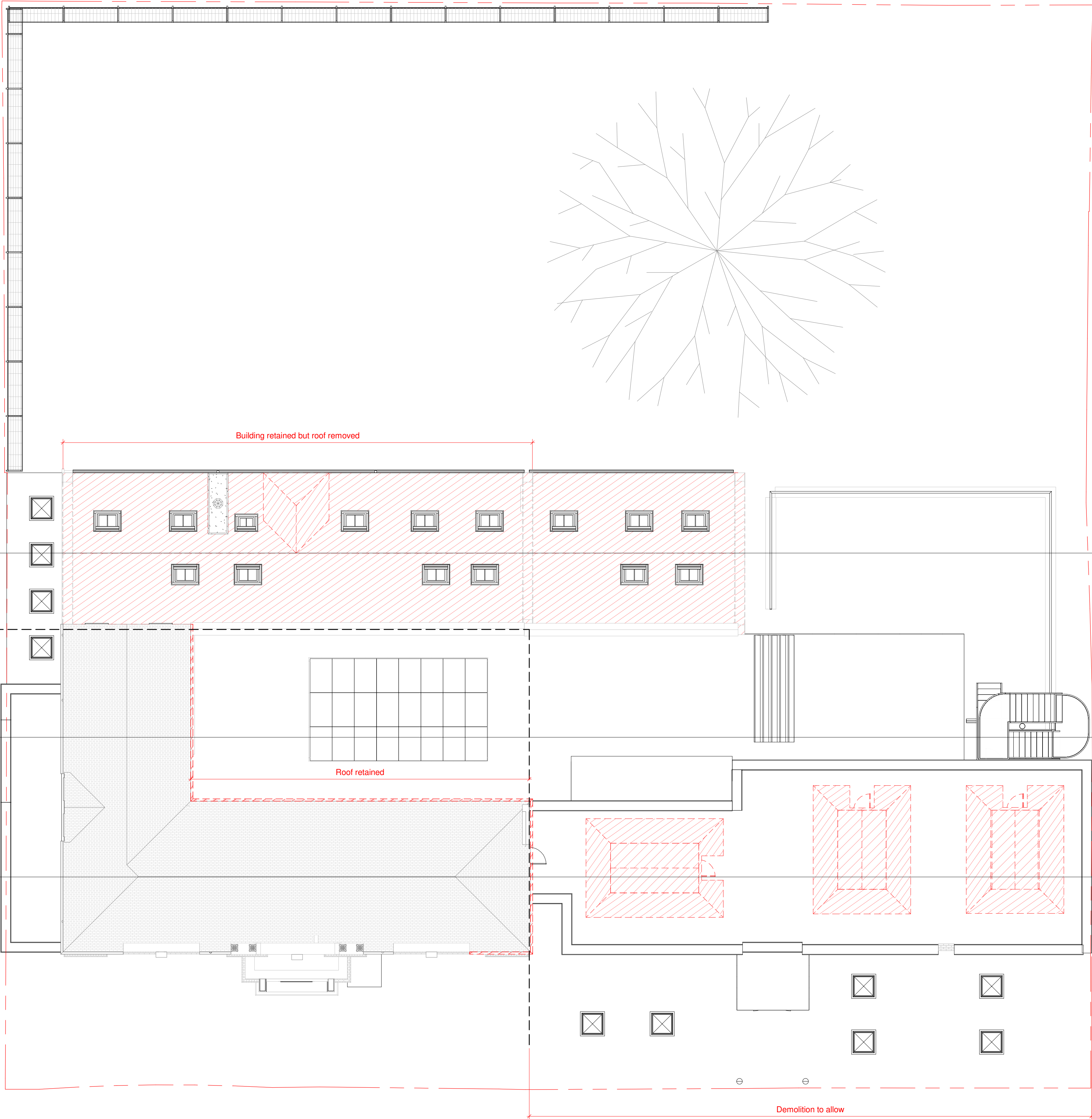
NORR Consultants Limited.
An Ingenium International Company

Tennyson House,
159 - 165 Great Portland Street,
London W1W 5PA
England, UK
norrr.com

Drawn CM	Date 19.06.19
Checked KS	Date 19.06.19
Scale 1 : 100 @ A1	
Client The Hall School	
Project The Hall Senior School	
Drawing Title Demolition Plans- Second Floor	
Sheet Status D2 - FOR TENDER	
Project No. IALN14-0046	
Drawing No. A80-02-00	Rev. P02



ISO A1 - 594mmx841mm



DATE	REVISION	REV	DRW	CHK
28.06.19	STAGE 4 - Interim Submission	P01	CM	KSB
02.08.19	STAGE 4 ISSUE	P02	CM / SC / IIP	KSB

Demolition Legend

Area to be Demolished, include forming new openings in structure, removal / relocation of M+E services to suit, removal of existing windows / doors / stairs / louvres / lighting fixtures.

IMPORTANT NOTE: READ IN CONJUNCTION WITH:

- NBS C20, C30, C40, C41, C42, C51, C90 CLAUSES
- A40-SH-01,02,03 RDS REFURB SCHEDULE AND THE RELEVANT A40 OR A41 RDS'S.

This drawing has been prepared solely for the use of The Hall School and there are no representations of any kind made by NORR Consultants Limited to any party with whom NORR Consultants Limited has not entered into a contract

This drawing must not be used, reproduced or revised without written permission.

This drawing shall not be used for construction purposes until the "CONSTRUCTION" status appears under the Sheet Status.

Constructors must only work to figured dimensions which are to be checked on site. Do not scale from hard copy drawings

Keyplan

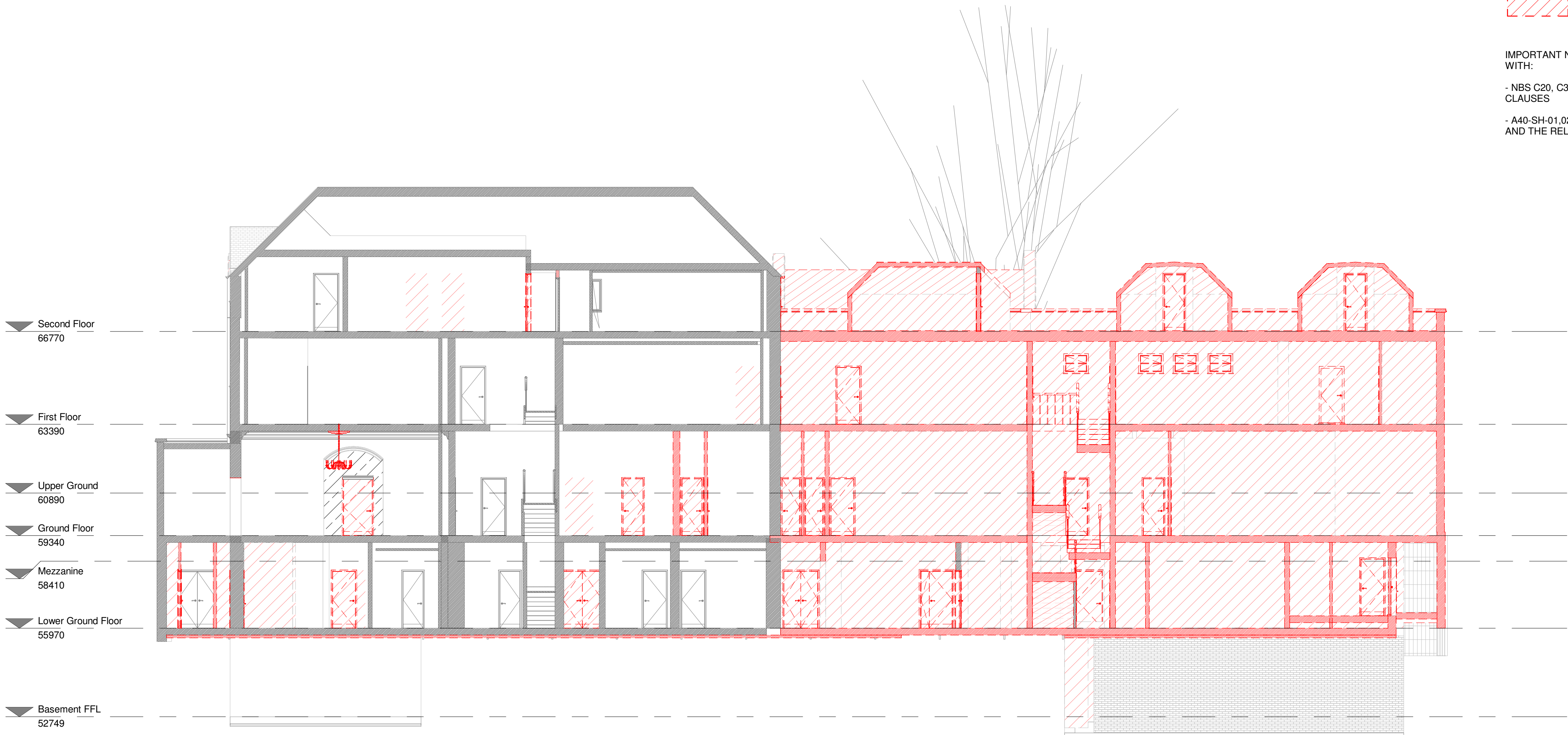
North Arrow

Detail Symbol

NORR
NORR Consultants Limited.
An Ingenium International Company

Tennyson House,
159 - 165 Great Portland Street,
London W1W 5PA
England, UK
norr.com

Drawn CM	Date 19.06.19
Checked KS	Date 19.06.19
Scale 1 : 100 @ A1	
Client The Hall School	
Project The Hall Senior School	
Drawing Title Demolition Plans- Roof	
Sheet Status D2 - FOR TENDER	
Project No. IALN14-0046	
Drawing No. A80-03-00	Rev. P02



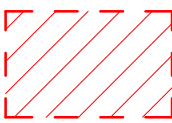
Notes

This drawing is subject to full verification by measured and structural survey, engineering design, confirmation of boundaries, easements and covenants.

This drawing is subject to full consultation with statutory bodies and associated consents.

The information is based upon OS information and topographical information supplied by third parties.

Demolition Legend



Area to be Demolished, include forming new openings in structure, removal / relocation of M+E services to suit, removal of existing windows / doors / stairs / louvres / lighting fixtures.

IMPORTANT NOTE: READ IN CONJUNCTION WITH:

- NBS C20, C30, C40, C41, C42, C51. C90 CLAUSES

- A40-SH-01,02,03 RDS REFURB SCHEDULE AND THE RELEVANT A40 OR A41 RDS'S.

DATE	REVISION	REV	DRW	CHK
28.06.19	STAGE 4 - Interim Submission	P01	CM	KSB
02.08.19	STAGE 4 ISSUE	P02	CM / SC / IIP	KSB

This drawing has been prepared solely for the use of The Hall School and there are no representations of any kind made by NORR Consultants Limited to any party with whom NORR Consultants Limited has not entered into a contract

This drawing must not be used, reproduced or revised without written permission.

This drawing shall not be used for construction purposes until the "CONSTRUCTION" status appears under the Sheet Status.

Constructors must only work to figured dimensions which are to be checked on site. Do not scale from hard copy drawings

Keyplan

North Arrow

Detail Symbol

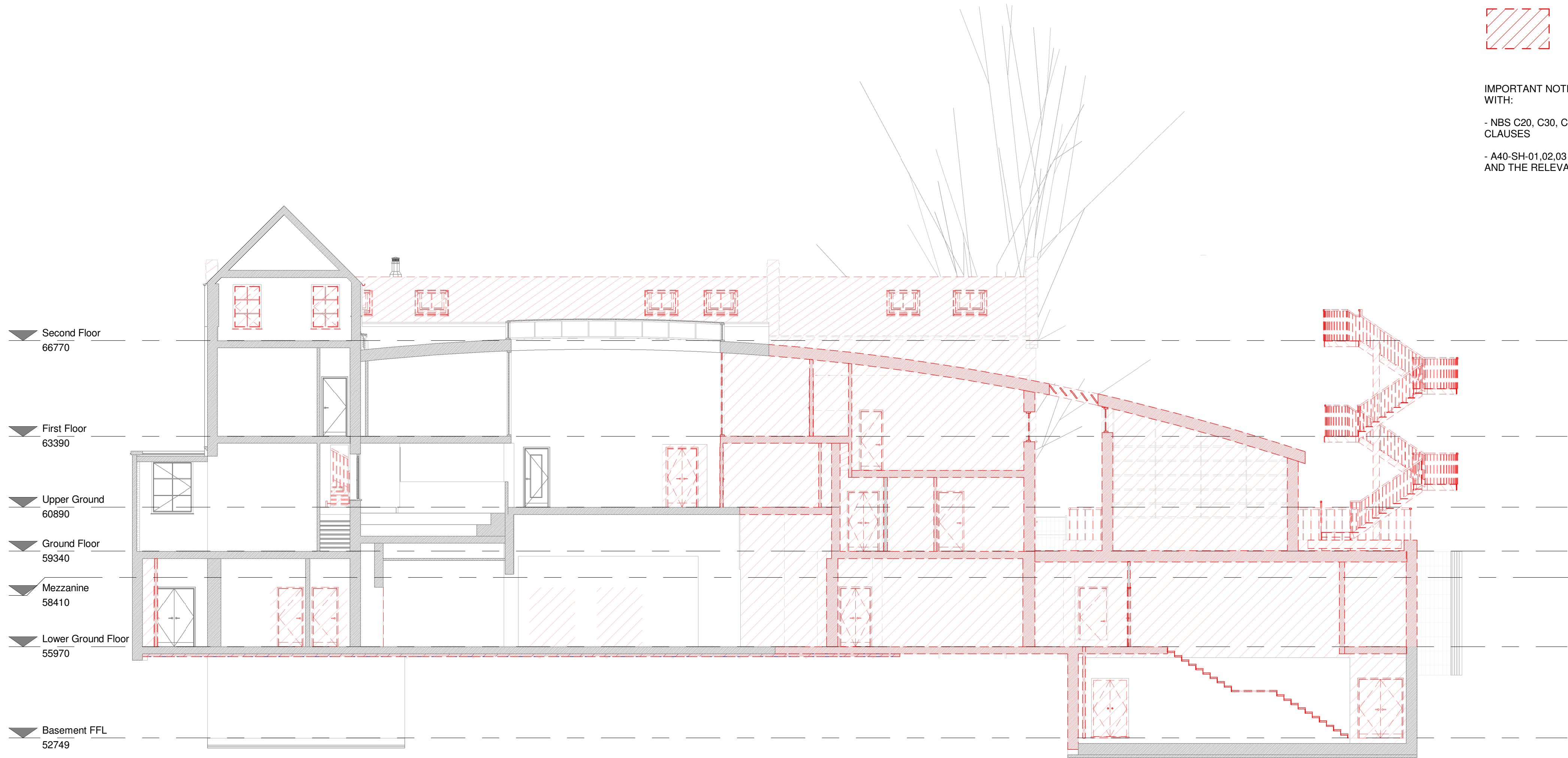
Detail No.

Sheet No.

NORR
NORR Consultants Limited.
An Ingenium International Company

Tennyson House,
159 - 165 Great Portland Street,
London W1W 5PA
England, UK
norr.com

Drawn CM	Date 19.06.19
Checked KSB	Date 19.06.19
Scale 1 : 100 @ A1	
Client The Hall School	
Project The Hall Senior School	
Drawing Title Demolition Section - D1	
Sheet Status D2 - FOR TENDER	
Project No. IALN14-0046	
Drawing No. A80-SC-11	Rev. P02



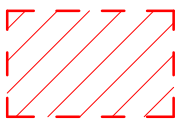
Notes

This drawing is subject to full verification by measured and structural survey, engineering design, confirmation of boundaries, easements and covenants.

This drawing is subject to full consultation with statutory bodies and associated consents.

The information is based upon OS information and topographical information supplied by third parties.

Demolition Legend



Area to be Demolished, include forming new openings in structure, removal / relocation of M+E services to suit, removal of existing windows / doors / stairs / louvres / lighting fixtures.

IMPORTANT NOTE: READ IN CONJUNCTION WITH:

- NBS C20, C30, C40, C41, C42, C51. C90 CLAUSES

- A40-SH-01 02.03 RDS REFURB SCHEDULE AND THE RELEVANT A40 OR A41 RDS'S.

DATE	REVISION	REV	DRW	CHK
28.06.19	STAGE 4 - Interim Submission	P01	CM	KSB
02.08.19	STAGE 4 ISSUE	P02	CM / SC / IIP	KSB

This drawing has been prepared solely for the use of The Hall School and there are no representations of any kind made by NORR Consultants Limited to any party with whom NORR Consultants Limited has not entered into a contract

This drawing must not be used, reproduced or revised without written permission.

This drawing shall not be used for construction purposes until the "CONSTRUCTION" status appears under the Sheet Status.

Constructors must only work to figured dimensions which are to be checked on site. Do not scale from hard copy drawings

Keyplan

North Arrow

Detail Symbol

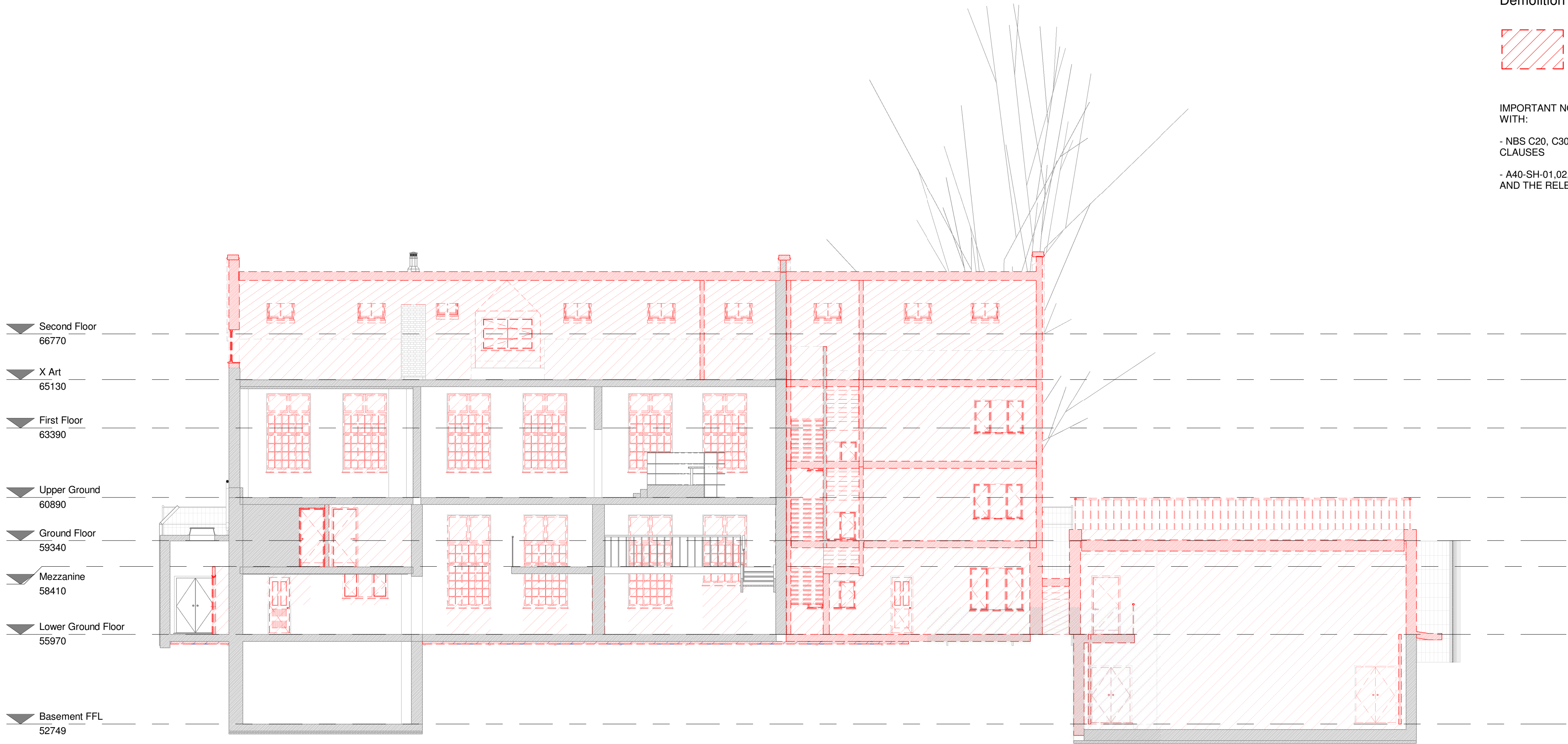
Detail No.

Sheet No.

NORR
NORR Consultants Limited.
An Ingenium International Company

Tennyson House,
159 - 165 Great Portland Street,
London W1W 5PA
England, UK
norrr.com

Drawn CM	Date 19.06.19
Checked KSB	Date 19.06.19
Scale 1 : 100 @ A1	
Client The Hall School	
Project The Hall Senior School	
Drawing Title Demolition Section - D2	
Sheet Status D2 - FOR TENDER	
Project No. IALN14-0046	
Drawing No. A80-SC-12	Rev. P02



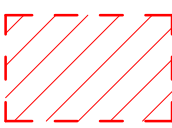
Notes

This drawing is subject to full verification by measured and structural survey, engineering design, confirmation of boundaries, easements and covenants.

This drawing is subject to full consultation with statutory bodies and associated consents.

The information is based upon OS information and topographical information supplied by third parties.

Demolition Legend



Area to be Demolished, include forming new openings in structure, removal / relocation of M+E services to suit, removal of existing windows / doors / stairs / louvres / lighting fixtures.

IMPORTANT NOTE: READ IN CONJUNCTION WITH:

- NBS C20, C30, C40, C41, C42, C51, C90 CLAUSES

- A40-SH-01,02,03 RDS REFURB SCHEDULE AND THE RELEVANT A40 OR A41 RDS'S.

DATE	REVISION	REV	DRW	CHK
28.06.19	STAGE 4 - Interim Submission	P01	CM	KSB
02.08.19	STAGE 4 ISSUE	P02	CM / SC / IIP	KSB

This drawing has been prepared solely for the use of The Hall School and there are no representations of any kind made by NORR Consultants Limited to any party with whom NORR Consultants Limited has not entered into a contract

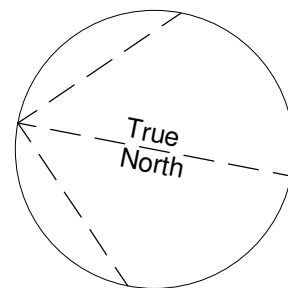
This drawing must not be used, reproduced or revised without written permission.

This drawing shall not be used for construction purposes until the "CONSTRUCTION" status appears under the Sheet Status.

Constructors must only work to figured dimensions which are to be checked on site. Do not scale from hard copy drawings

Keyplan

North Arrow



Detail Symbol

Detail No.
Sheet No.

NORR
NORR Consultants Limited.
An Ingenium International Company

Tennyson House,
159 - 165 Great Portland Street,
London W1W 5PA
England, UK
norrr.com

Drawn CM	Date 19.06.19
Checked KSB	Date 19.06.19
Scale 1 : 100 @ A1	
Client The Hall School	
Project The Hall Senior School	
Drawing Title Demolition Section - D3	
Sheet Status D2 - FOR TENDER	
Project No. IALN14-0046	
Drawing No. A80-SC-13	Rev. P02