

HEAT PUMP SCHEDULE (OUTDOOR)							
REF	LOCATION	MANUFACTURER	MODEL	RUNNING CURRENT (A)	ELECTRICAL DETAILS (V/F/Hz)	SPACE TEMPERATURE SENSOR	WEIGHT (kg)
C01	EXTERNAL	DAKIN	REYQ54U	24.6A	400/3/50	-	317
			REYQ18U	24.6A			317
			REYQ18U	24.6A			317
C02	EXTERNAL	DAKIN	RXM35N9	4.40	230/1/50	-	32
C03	EXTERNAL	DAKIN	RXM42N9	5.2	230/1/50	-	50
C04	EXTERNAL	DAKIN	RXM42N9	5.2	230/1/50	-	50
C05	EXTERNAL	DAKIN	RXM42N9	5.2	230/1/50	-	50

GENERAL NOTES

- THIS DRAWING SHALL BE READ IN CONJUNCTION WITH ALL ASSOCIATED SERVICES DRAWINGS, ARCHITECTS AND STRUCTURAL DRAWINGS TOGETHER WITH THE SCHEMATIC DRAWINGS AND ALL MECHANICAL, ELECTRICAL AND OTHER RELEVANT SPECIFICATIONS.
- ALL SERVICES INSTALLATIONS SHALL BE CO-ORDINATED AND FULLY INTEGRATED WITH THE MECHANICAL AND ELECTRICAL SERVICES, ARCHITECTURAL FEATURES, SPECIALIST PLANT AND STRUCTURAL ELEMENTS.
- THE SERVICES CONTRACTORS SHALL FAMILIARISE THEMSELVES WITH THE MECHANICAL AND ELECTRICAL SERVICES, ARCHITECTURAL FEATURES, SPECIALIST PLANT AND STRUCTURAL ELEMENTS.
- THE INSTALLING SUB-CONTRACTOR SHALL ISSUE FULL WORKING DRAWINGS IN LINE WITH THE SPECIFICATION PROVIDED. THE WORKING DRAWINGS SHALL BE ISSUED TO ALL DESIGN TEAM MEMBERS FOR THEIR COMMENT PRIOR TO INSTALLATION. THE INSTALLATION AND CO-ORDINATION OF SERVICES WITH OTHER SERVICES, THIRD PARTY SUPPLIERS AND THE BUILDING FABRIC IS THE RESPONSIBILITY OF THE INSTALLING SUB-CONTRACTOR.

This drawing is the property of DDA Ltd Consultant Engineers. It must not be reproduced in whole or in part, nor the design used without prior written consent. This drawing and associated documents are strictly private and confidential and should not be disclosed with anyone other than members of the design team. Do not scale from this drawing.

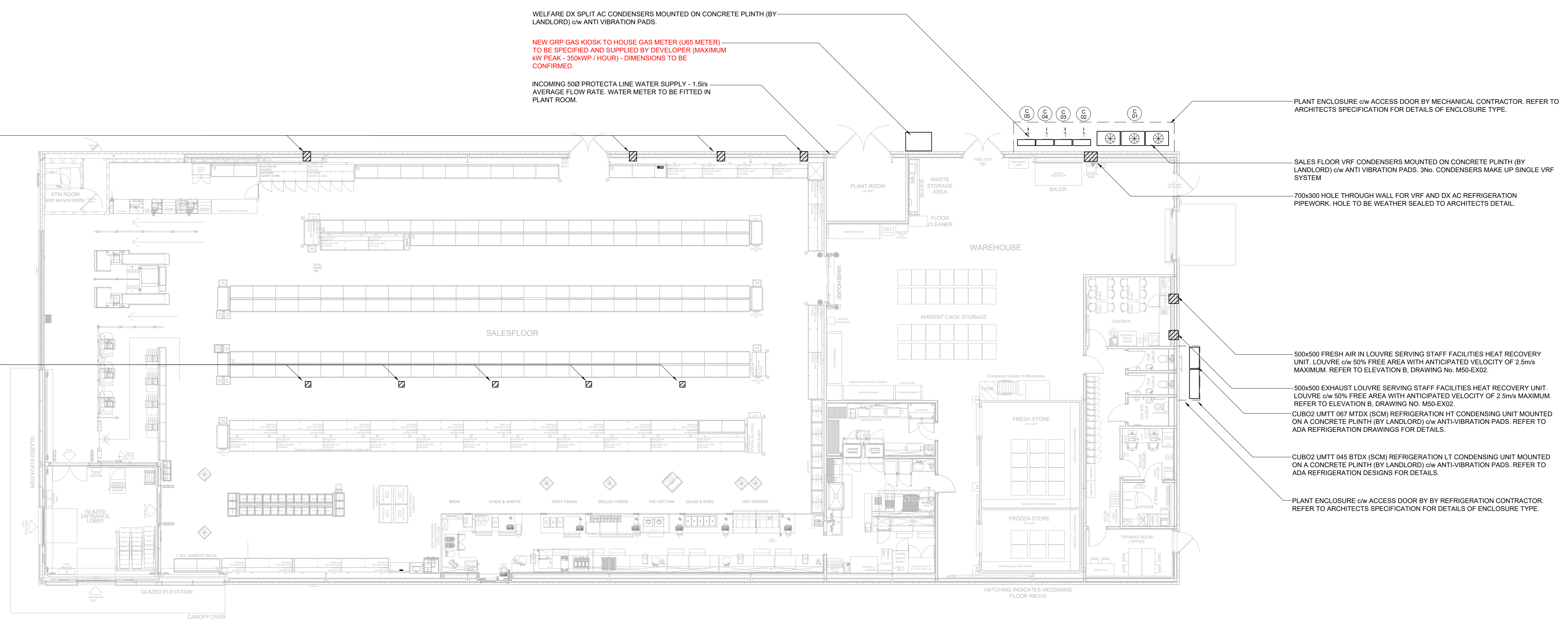
SAFETY, HEALTH & ENVIRONMENTAL INFORMATION
 Refer to the DDA Ltd project specific risk assessment and design criteria for the M&E services installation. The installing contractor must provide method statements for the installation works and agree all works in advance with the main contractor.

It is assumed that all works associated with this drawing will be carried out by competent operatives working, where appropriate, to an approved method.

NOTES

300x300 WALL LOUVRES FOR HEAT DISSIPATION EXTRACT FAN MOUNTED ABOVE INTEGRAL CHILLERS / FROZEN CASES. REFER TO ELEVATION A, DRAWING NO. M50-EX02.

5No. ROOF MOUNTED HEAT DISSIPATION EXTRACT FANS MOUNTED AT ROOF RIDGE.



TENDER			
Ref.	Date	Description	Eng.
H	01/11/20	XREF UPDATED TO LATEST SK2 LAYOUT	AP
G	15/10/20	PLANT ENCLOSURE NOTES UPDATED	AP
F	01/10/20	ISSUED FOR TENDER 2. XREF UPDATED TO LATEST SK 3. REV G 4. ADDITIONAL DX CONDENSER ADDED 5. SCHEDULES ADDED	AP
E	11/09/20	REFRIGERATION CONDENSER REFERENCES ADDED	AP
D	09/09/20	1. XREF UPDATED 2. GENERAL UPDATES	AP
C	02/09/20	MECHANICAL EQUIPMENT REMOVED FROM DRAWING	AP
B	03/04/20	XREF UPDATED TO LATEST	AP
A	01/04/20	AC CONDENSERS RELOCATED	AP



Drawing Title	
EXTERNAL MECHANICAL SERVICES LAYOUT	
Scale at A0	Date 26-03-20
1:100	
Drawn	Engineer
A. PARRY	A. PARRY
Status	Checked
TENDER	P. GUEST
Drawing No.	Rev
19/3359/M50/EX01	H

PREPARED BY: MORRISONS
 DATE: 26.10.20
 LAYOUT BASED ON: WMS CAMDEN TEMP STORE_SK2 REV B 29.10.20