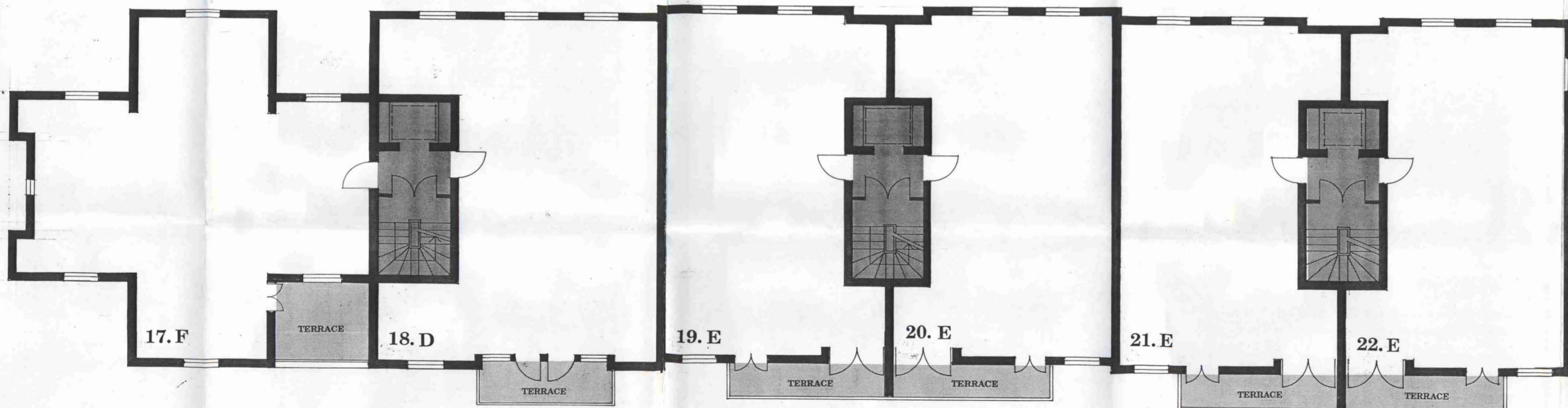
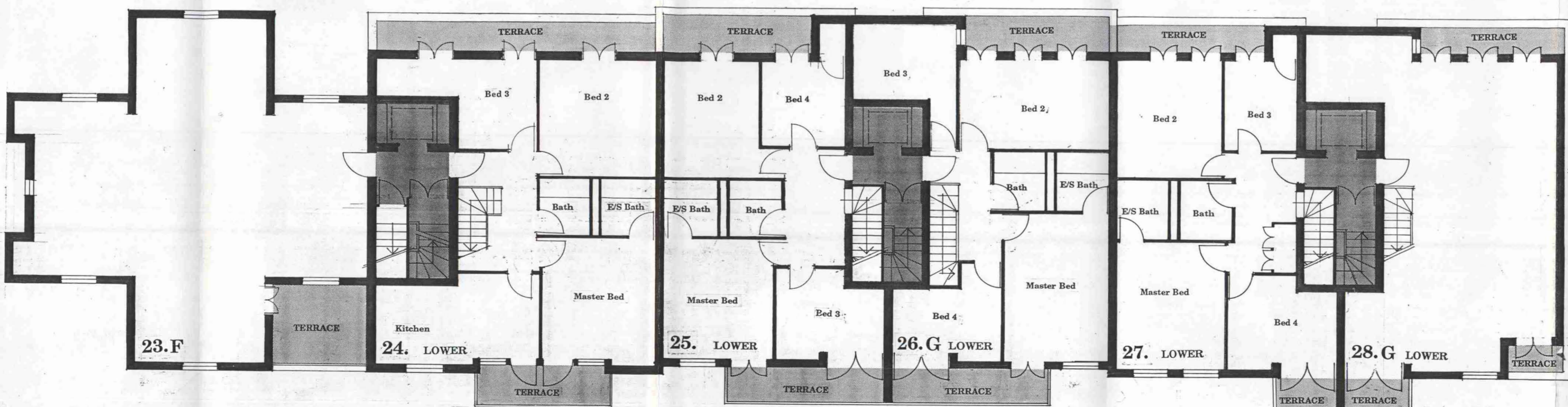


FIRST FLOOR



SECOND FLOOR



THIRD FLOOR

GENERAL NOTES
 ALL SETTING OUT MUST BE CHECKED ON SITE.
 ALL LEVELS MUST BE CHECKED ON SITE.
 ALL FIXINGS AND WEATHERINGS MUST BE CHECKED ON SITE.
 ALL DIMENSIONS MUST BE CHECKED ON SITE.
 THIS DRAWING MUST NOT BE SCALED.
 THIS DRAWING MUST BE READ IN CONJUNCTION WITH THE RELEVANT SPECIFICATION CLAUSES.
 THIS DRAWING MUST NOT BE USED FOR LAND TRANSFER PURPOSES.
 © JOHN ASSAEL & PARTNERS (LONDON) LTD.

DRAWING NOTES

REVISIONS

NO	REVISION	DATE	DRN
A	ALL TOP FLOOR MAISONNETTES CHANGED TO 4 BED MAISONNETTES 24 & 25 AMENDED	12/89	CB

JOHN ASSAEL & PARTNERS
 2/18 Harbour Yard Studios Chelsea Harbour London SW10 0XD
 Telephone 01 376 5033 Fax 01 352 4354

CLIENT
BERKLEY HOUSE

LONDON BOROUGH OF CAMDEN
 PLANNING DEPARTMENT
 PROJECT TITLE
 DEPARTMENT
 7 MAY 1989
NEW ENDECEIVED

LONDON BOROUGH OF CAMDEN
 TOWN AND COUNTRY PLANNING ACTS
 9 JUN 1989
 PLANS APPROVED
 NOT APPROVED
 ON BEHALF OF THE COUNCIL

880388084

DRAWING TITLE
**HEATH HEIGHTS
 01.02.03**

SCALE DATE DRWN BY
 1:100 27/1/89

JOB NO DRAWING NO. LATEST REV
 567 271 A

DRAWING STATUS
PLANNING