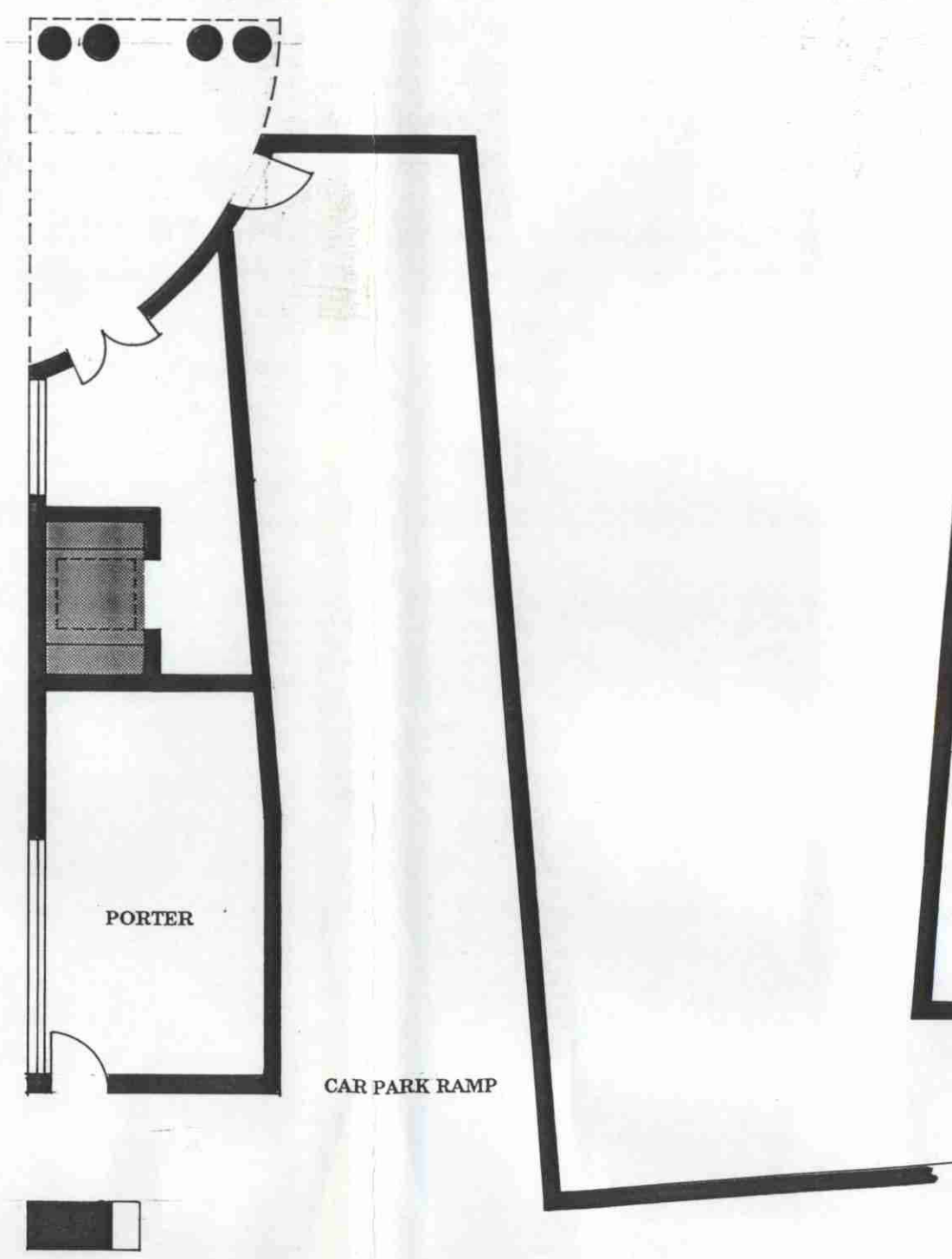
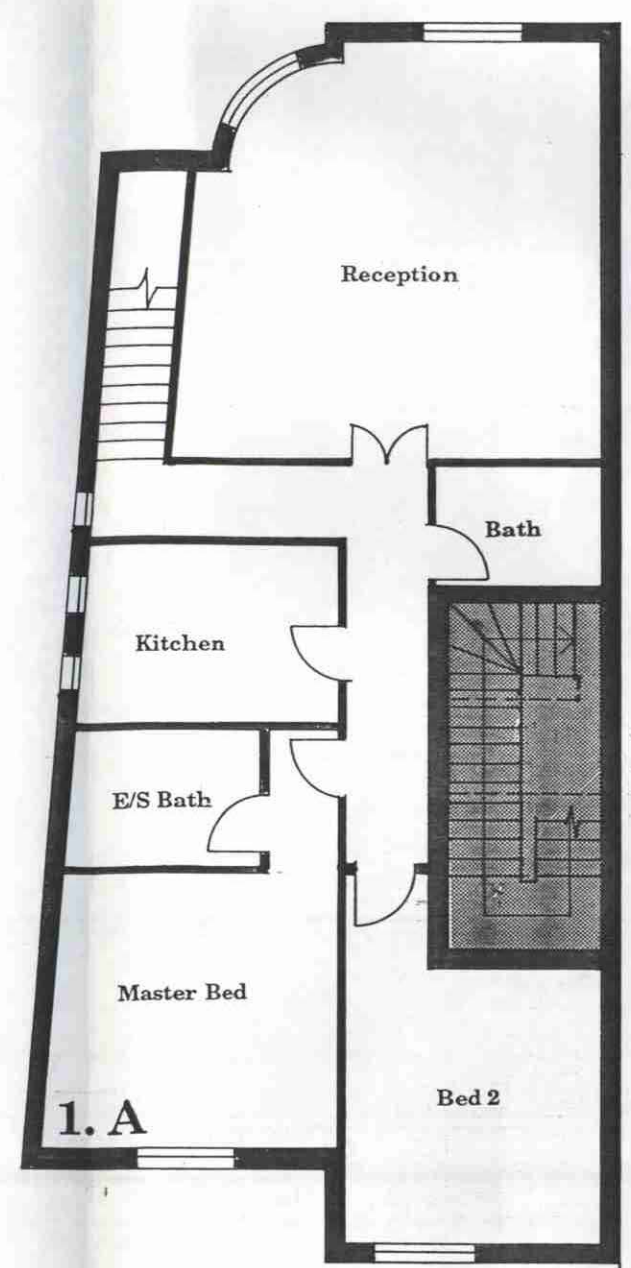
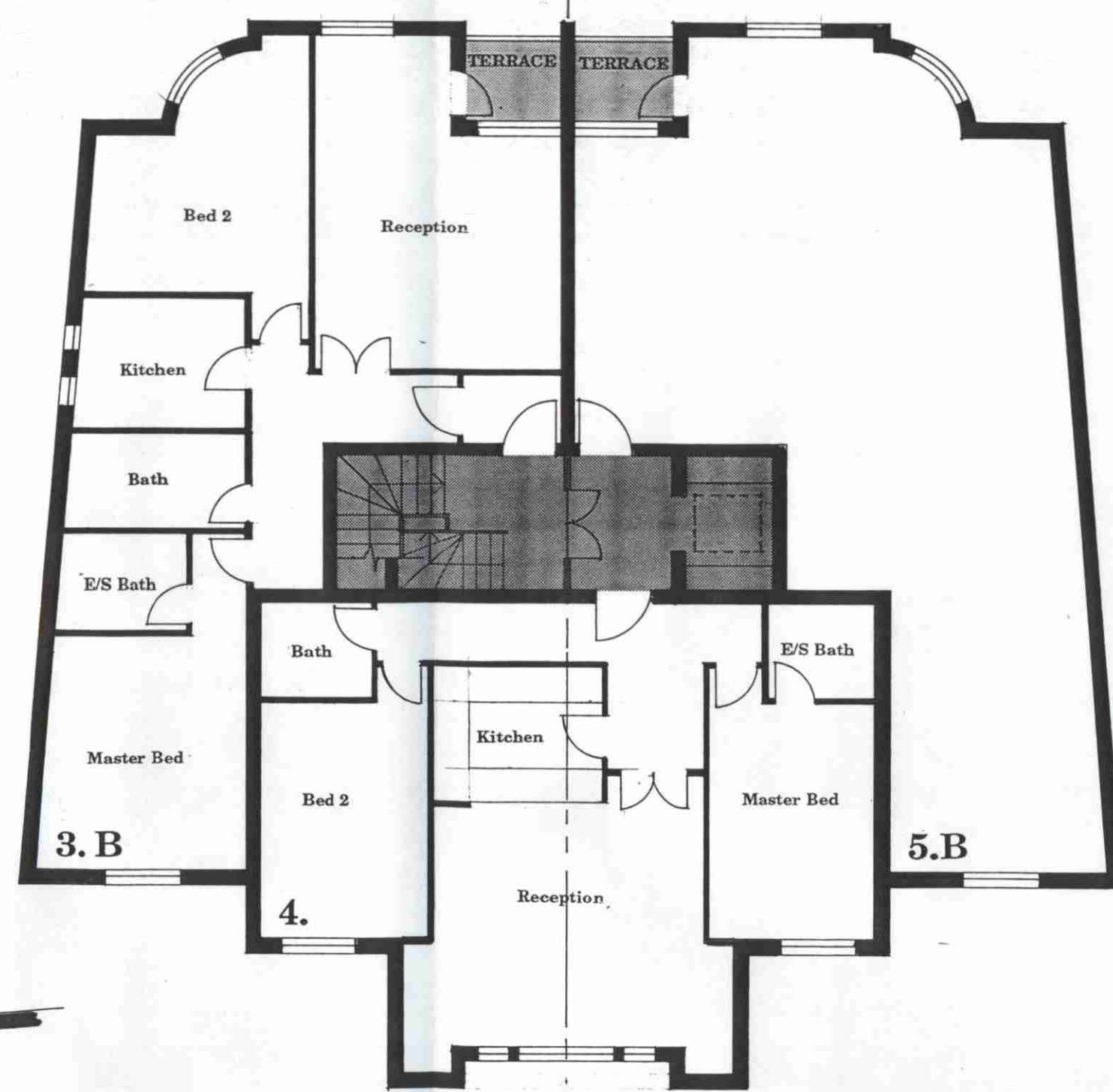


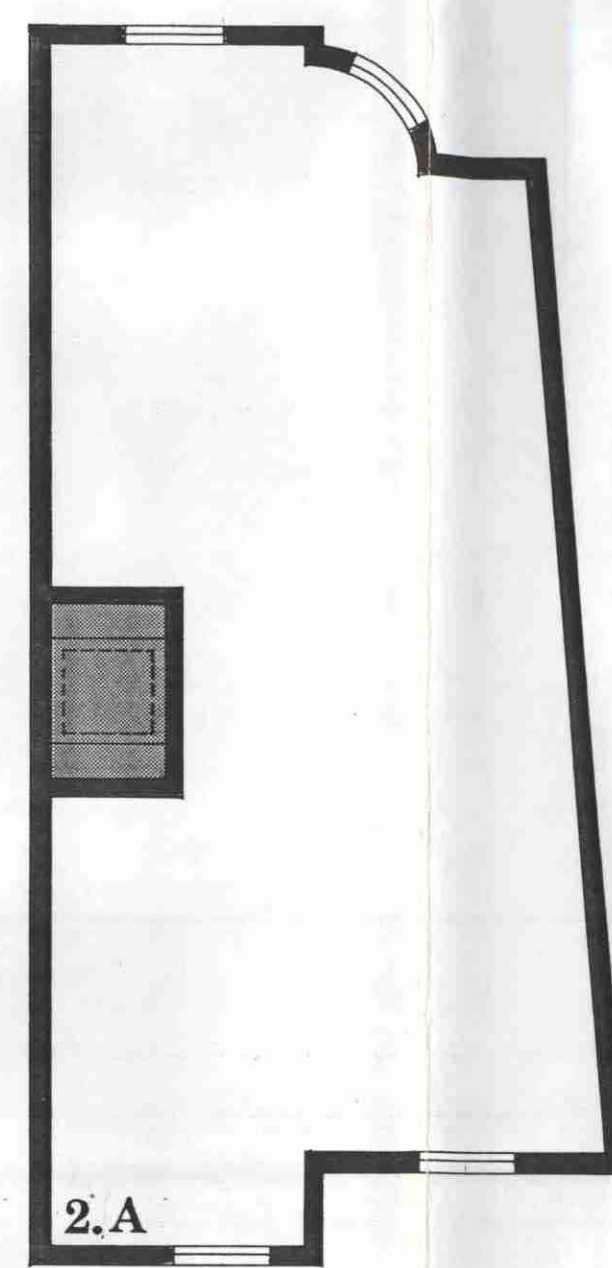
GROUND FLOOR



SECOND FLOOR



FIRST FLOOR



GENERAL NOTES
 ALL SETTING OUT MUST BE CHECKED ON SITE.
 ALL LEVELS MUST BE CHECKED ON SITE.
 ALL FIXINGS AND WEATHERINGS MUST BE CHECKED ON SITE.
 ALL DIMENSIONS MUST BE CHECKED ON SITE.
 THIS DRAWING MUST NOT BE SCALED.
 THIS DRAWING MUST BE READ IN CONJUNCTION WITH THE RELEVANT SPECIFICATION CLAUSES.
 THIS DRAWING MUST NOT BE USED FOR LAND TRANSFER PURPOSES.
 © JOHN ASSAEL & PARTNERS (LONDON) LTD.

DRAWING NOTES

REVISIONS

NO	REVISION	DATE	DRN
A	STAIR LOBBY COMPLETED	12/89	CB

JOHN ASSAEL & PARTNERS
 2/18 Harbour Yard Studios Chelsea Harbour London SW10 0XD
 Telephone 01 376 5033 Fax 01 352 4354

CLIENT
BERKLEY HOUSE
 LONDON BOROUGH OF CAMDEN
 PLANNING AND TRANSPORT
 DEPARTMENT

PROJECT TITLE
NEW END
 RECEIVED
 11 MAY 1989

LONDON BOROUGH OF CAMDEN
 TOWN AND COUNTRY PLANNING ACTS
 9 JUN 1989
 PLANS APPROVED
 NOT APPROVED
 ON BEHALF OF THE COUNCIL

8803880R4

DRAWING TITLE
**ST. JOHNS GATE
 GE.01.02**

SCALE DATE DRWN BY
1:100 27/1/89

JOB NO DRAWING NO LATEST REV
567 250 A

DRAWING STATUS
PLANNING