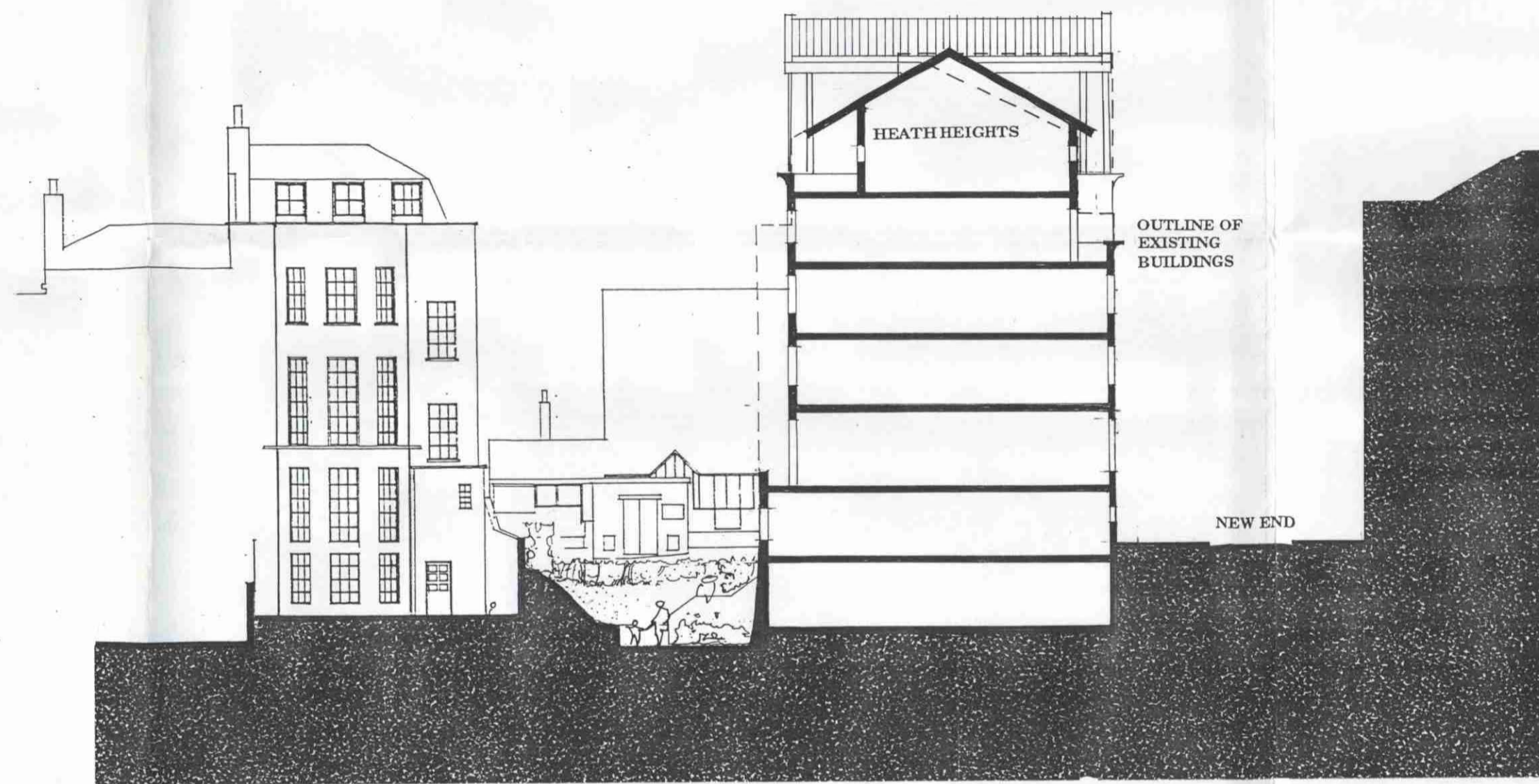
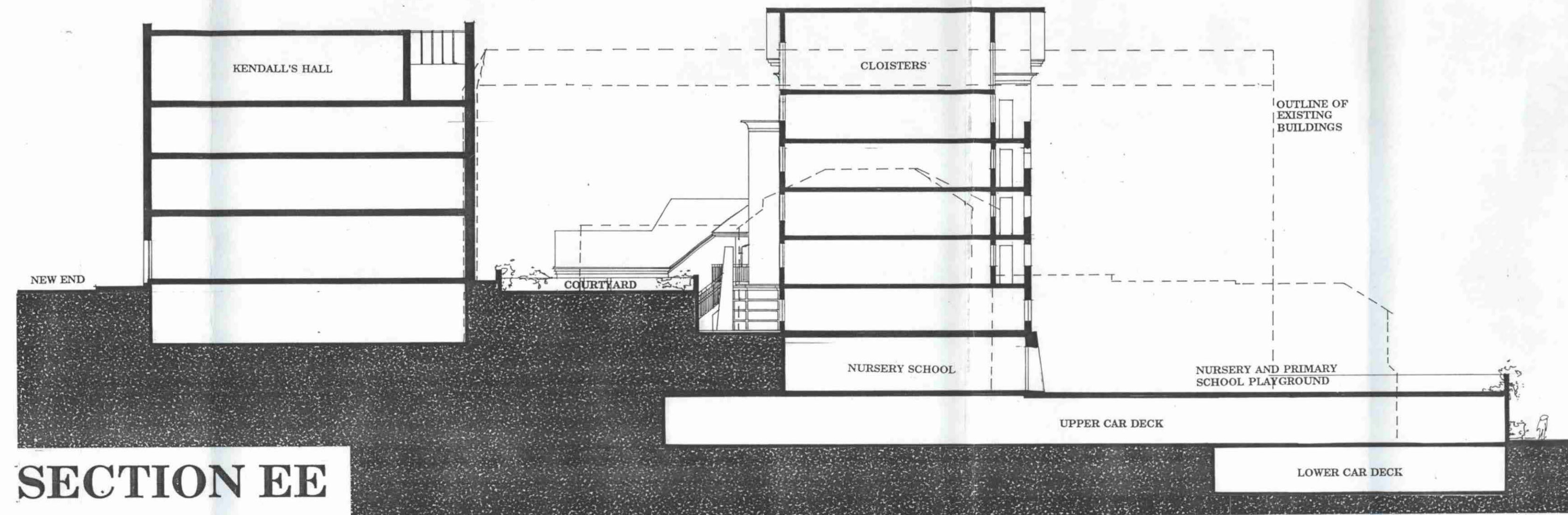


SECTION CC



SECTION DD



SECTION EE

GENERAL NOTES
 ALL SETTING OUT MUST BE CHECKED ON SITE
 ALL LEVELS MUST BE CHECKED ON SITE
 ALL FIXINGS AND WEATHERINGS MUST BE CHECKED ON SITE
 ALL DIMENSIONS MUST BE CHECKED ON SITE
 THIS DRAWING MUST NOT BE SCALED
 THIS DRAWING MUST BE READ IN CONJUNCTION WITH THE RELEVANT SPECIFICATION CLAUSES
 THIS DRAWING MUST NOT BE USED FOR LAND TRANSFER PURPOSES
 © JOHN ASSAEL & PARTNERS (LONDON) LTD

DRAWING NOTES

REVISIONS

NO	REVISION	DATE	DRN
A	SECTION CC & DD AMENDED	2/89	

JOHN ASSAEL & PARTNERS
 2/18 Harbour Yard Studios Chelsea Harbour London SW10 0XD
 Telephone 01 376 5033 Fax 01 352 4354

CLIENT
BERKLEY HOUSE

LONDON BOROUGH OF CAMDEN
 PLANNING AND TRANSPORT DEPARTMENT
 PROJECT TITLE
NEW END
 11 MAY 1989
 RECEIVED

DRAWING TITLE
SECTIONS CC, DD & EE

LONDON BOROUGH OF CAMDEN
 TOWN AND COUNTRY PLANNING ACTS
 9 JUN 1989
 PLANS APPROVED
 NOT APPROVED
 ON BEHALF OF THE COUNCIL

SCALE DATE DRWN BY
 1:200 27/1/89

JOB NO DRAWING NO LATEST REV
 567 234 A

DRAWING STATUS
PLANNING

8803880R4