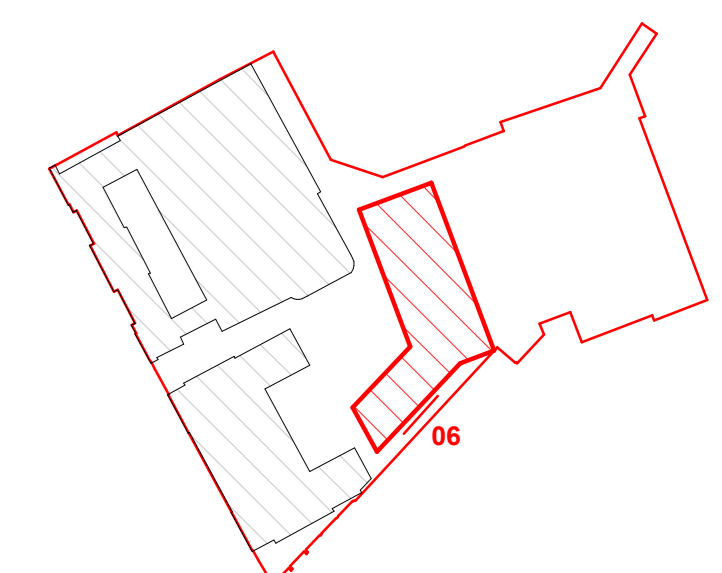


Copyright Hawkins\Brown Architects  
 No implied licence exists. This drawing should not be used to calculate areas for the purposes of valuation. Do not scale this drawing. All dimensions to be checked on the site by the contractor and such dimensions to be their responsibility. All work must comply with relevant British Standards and Building Regulations requirements. Drawing errors and omissions to be reported to the architect. To be read in conjunction with Architect's specification and other consultant information.

Rev	Description	Date
-----	-------------	------



Location Plan: NTS

- Material Palette**
1. Grey black and white multi tonal brick soft mud handmade texture
  2. Soldier coursed grey black and white multi tonal brick - soft mud handmade texture
  3. Pre-cast pigmented concrete
  4. Glazed curtain walling with anodized aluminium frames - colour RAL 7026 'Granite Grey'
  5. Windows with anodized aluminium frames - colour RAL 7026 'Granite Grey'
  6. Enamel-backed spandrel glazing with anodized aluminium frames - colour RAL 7026 'Granite Grey'
  7. Hit and miss brickwork to mechanical louvres
  8. Anodised aluminium railing - colour RAL 7026 'Granite Grey'
  9. Galvanised mild steel railing - colour to match bike store RAL 7026 'Granite Grey'
  10. Glazed brick - colour to match RAL 8029 'Pearl Copper'



159 St John Street  
 London EC1V 4JQ  
 mail@hawkinsbrown.com  
 hawkinsbrown.com

**Hawkins\Brown**

Project  
 256 Gray's Inn Road  
 London  
 WC1X 8LD

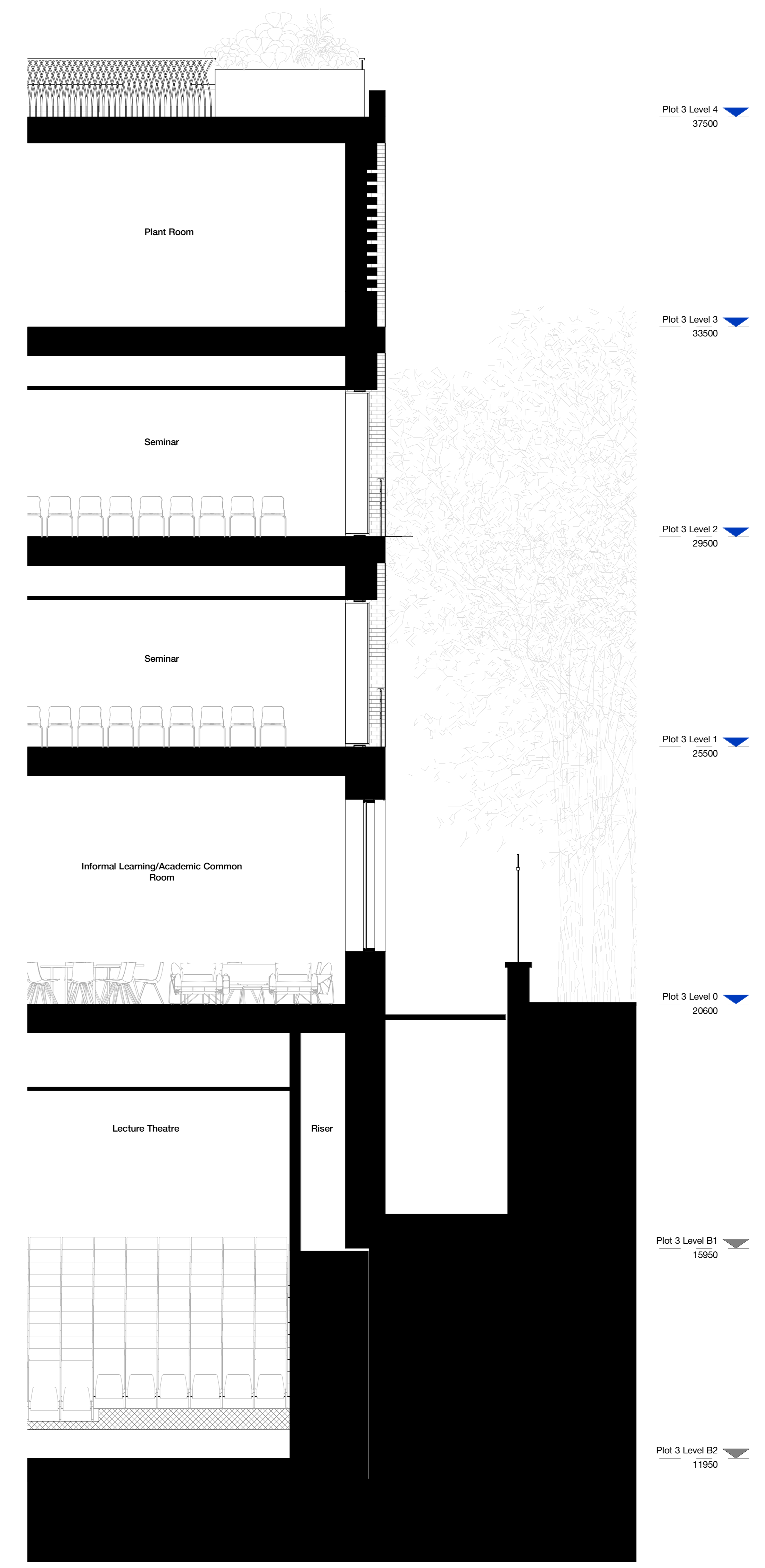
Drawing  
 Plot 3 Elevation Bay Study 06

Scale @ A0 1 : 50	Date May 2019
----------------------	------------------

Drawn By	Checked By
----------	------------

Job Number 17056	Status P1	Purpose of Issue Planning
---------------------	--------------	------------------------------

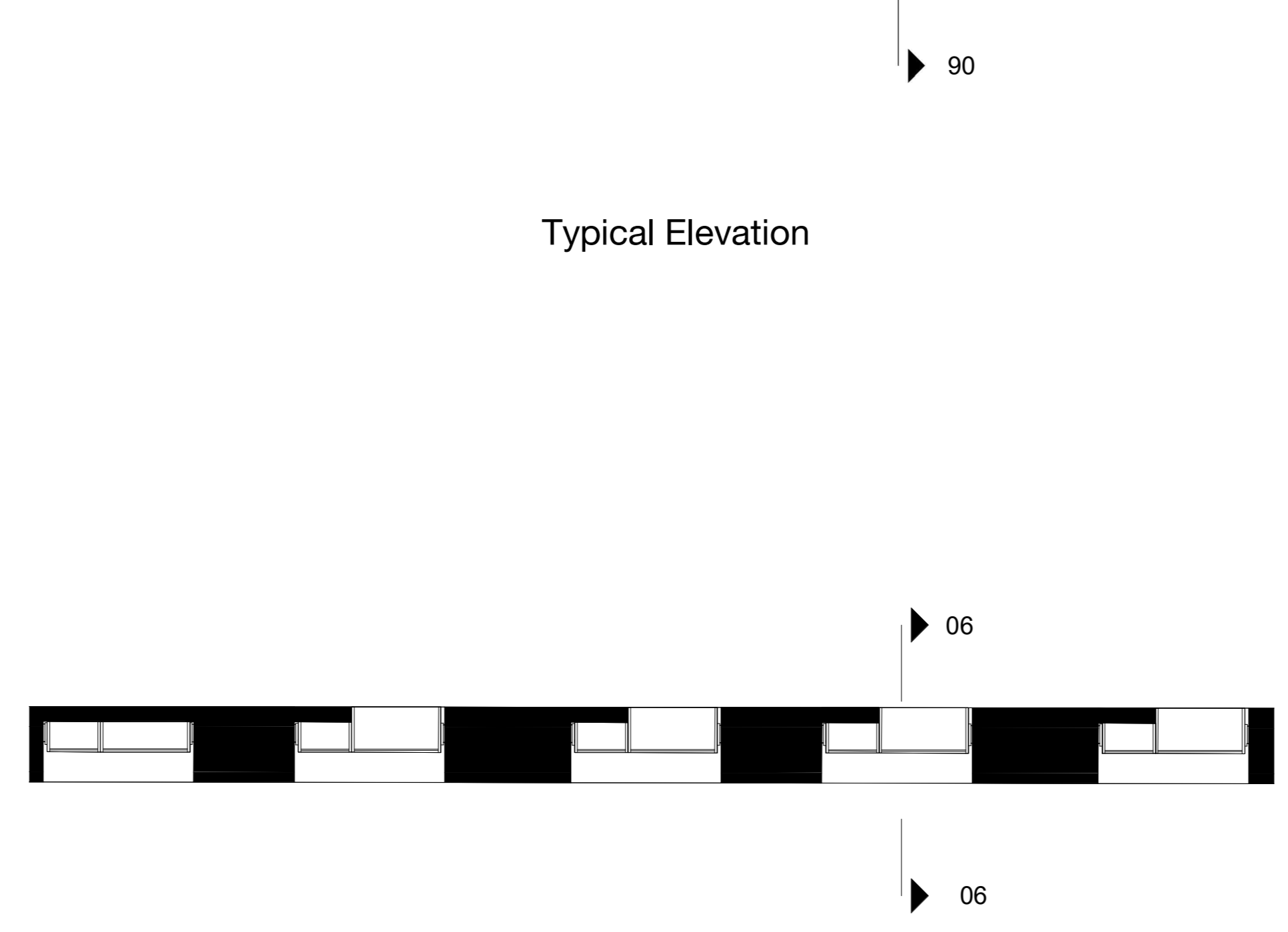
Drawing No. BEMP-HBA-P3-ZZ-DR-A-21-1406	Rev
--	-----



Typical Section



Typical Elevation



Typical Plan



3D Axonometric