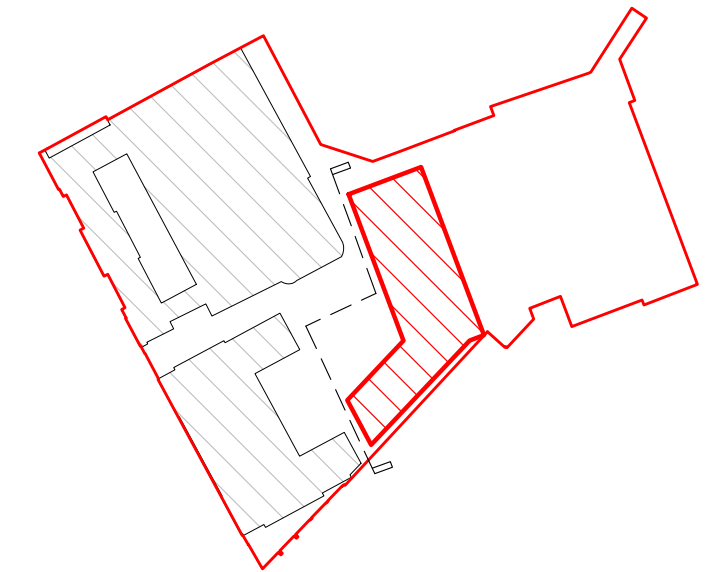




Copyright Hawkins\Brown Architects
No implied licence exists. This drawing should not be used to calculate areas for the purposes of valuation. Do not scale this drawing. All dimensions to be checked on the site by the contractor and such dimensions to be their responsibility. All work must comply with relevant British Standards and Building Regulations requirements. Drawing errors and omissions to be reported to the architect. To be read in conjunction with Architect's specification and other consultant information.

Rev	Description	Date
-----	-------------	------



Site Plan: NTS

Material Palette

- Grey black and white multi tonal brick soft mud handmade texture
- Soldier coursed grey black and white multi tonal brick - soft mud handmade texture
- Pre-cast pigmented concrete
- Glazed curtain walling with anodized aluminium frames - colour RAL 7026 'Granite Grey'
- Windows with anodized aluminium frames - colour RAL 7026 'Granite Grey'
- Enamel-backed spandrel glazing with anodized aluminium frames - colour RAL 7026 'Granite Grey'
- Hit and miss brickwork to mechanical louvers
- Anodised aluminium railing bars to bike store - colour RAL 7026 'Granite Grey'
- Galvanised mild steel railing - colour to match bike store RAL 7026 'Granite Grey'
- Glazed brick - colour to match RAL 8029 'Pearl Copper'

0 1 2 3 5m

159 St John Street
London EC1V 4QJ

mail@hawkinsbrown.com
hawkinsbrown.com

Hawkins\Brown

Project
256 Gray's Inn Road
London
WC1X 8LD

Drawing
Plot 3 West Elevation - Proposed

Scale @ A1 1 : 100	Date May 2019
-----------------------	------------------

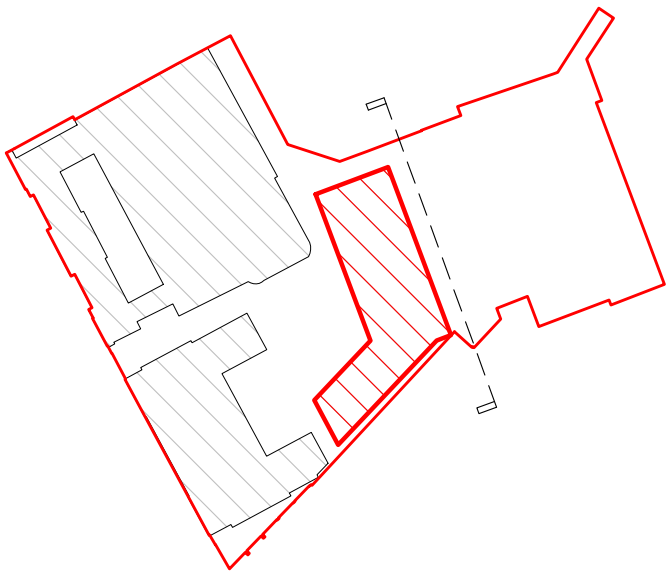
Drawn By	Checked By
----------	------------

Job Number 17056	Status P1	Purpose of Issue Planning
---------------------	--------------	------------------------------

Drawing No. BEMP-HBA-P3-ZZ-DR-A-20-1202	Rev
--	-----

Copyright Hawkins\Brown Architects
No implied licence exists. This drawing should not be used to calculate areas for the purposes of valuation. Do not scale this drawing. All dimensions to be checked on the site by the contractor and such dimensions to be their responsibility. All work must comply with relevant British Standards and Building Regulations requirements. Drawing errors and omissions to be reported to the architect. To be read in conjunction with Architect's specification and other consultant information.

Rev	Description	Date
-----	-------------	------



1 Site Plan: NTS

Material Palette

1. Grey black and white multi tonal brick soft mud handmade texture
2. Soldier coursed grey black and white multi tonal brick - soft mud handmade texture
3. Pre-cast pigmented concrete
4. Glazed curtain walling with anodized aluminium frames - colour RAL 7026 'Granite Grey'
5. Windows with anodized aluminium frames - colour RAL 7026 'Granite Grey'
6. Enamel-backed spandrel glazing with anodized aluminium frames - colour RAL 7026 'Granite Grey'
7. Hit and miss brickwork to mechanical louvers
8. Anodised aluminium railing bars to bike store - colour RAL 7026 'Granite Grey'
9. Galvanised mild steel railing - colour to match bike store RAL 7026 'Granite Grey'
10. Glazed brick - colour to match RAL 8029 'Pearl Copper'

0 1 2 3 5m

159 St John Street
London EC1V 4JQ

mail@hawkinsbrown.com
hawkinsbrown.com

Hawkins\Brown

Project
256 Gray's Inn Road
London
WC1X 8LD

Drawing
Plot 3 East Elevation - Proposed

Scale @ A1
1 : 100

Date
May 2019

Drawn By

Checked By

Job Number
17056

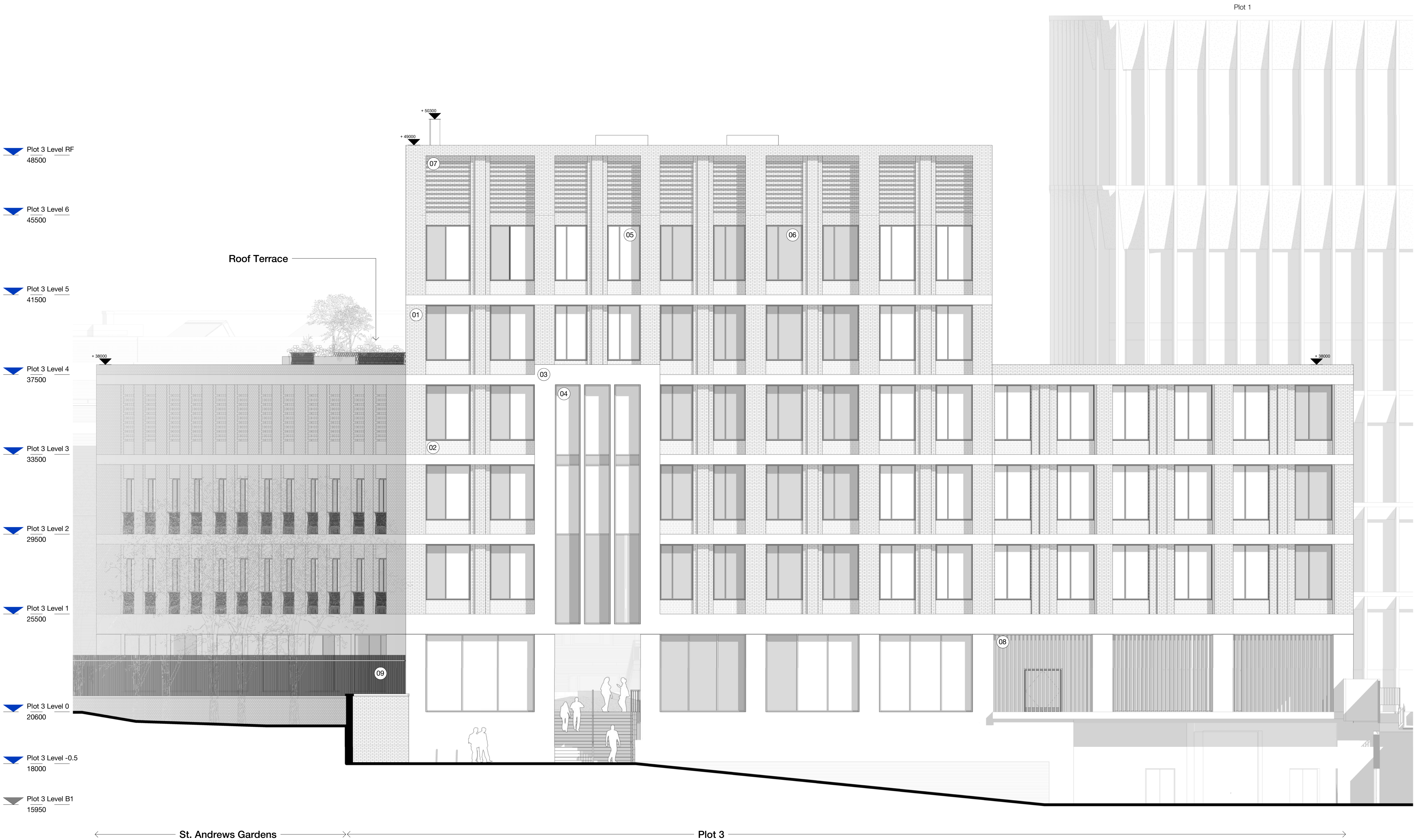
Status
P1

Purpose of Issue
Planning

Drawing No.

Rev

BEMP-HBA-P3-ZZ-DR-A-20-1200

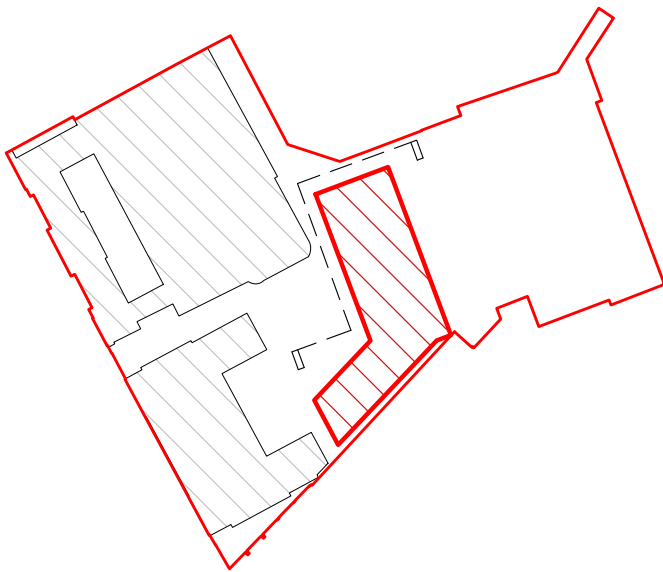


St. Andrews Gardens

Plot 3

Copyright Hawkins\Brown Architects
No implied licence exists. This drawing should not be used to calculate areas for the purposes of valuation. Do not scale this drawing. All dimensions to be checked on the site by the contractor and such dimensions to be their responsibility. All work must comply with relevant British Standards and Building Regulations requirements. Drawing errors and omissions to be reported to the architect. To be read in conjunction with Architect's specification and other consultant information.

Rev	Description	Date
-----	-------------	------



Site Plan: NTS

Material Palette

- Grey black and white multi tonal brick soft mud handmade texture
- Soldier coursed grey black and white multi tonal brick - soft mud handmade texture
- Pre-cast pigmented concrete
- Glazed curtain walling with anodized aluminium frames - colour RAL 7026 'Granite Grey'
- Windows with anodized aluminium frames - colour RAL 7026 'Granite Grey'
- Enamel-backed spandrel glazing with anodized aluminium frames - colour RAL 7026 'Granite Grey'
- Hit and miss brickwork to mechanical louvers
- Anodised aluminium railing bars to bike store - colour RAL 7026 'Granite Grey'
- Galvanised mild steel railing - colour to match bike store RAL 7026 'Granite Grey'
- Glazed brick - colour to match RAL 8029 'Pearl Copper'

0 1 2 3 5m

159 St John Street
London EC1V 4QJ

mail@hawkinsbrown.com
hawkinsbrown.com

Hawkins\Brown

Project
256 Gray's Inn Road
London
WC1X 8LD

Drawing
Plot 3 North Elevation - Proposed

Scale @ A1
1 : 100

Date
May 2019

Drawn By

Checked By

Job Number
17056

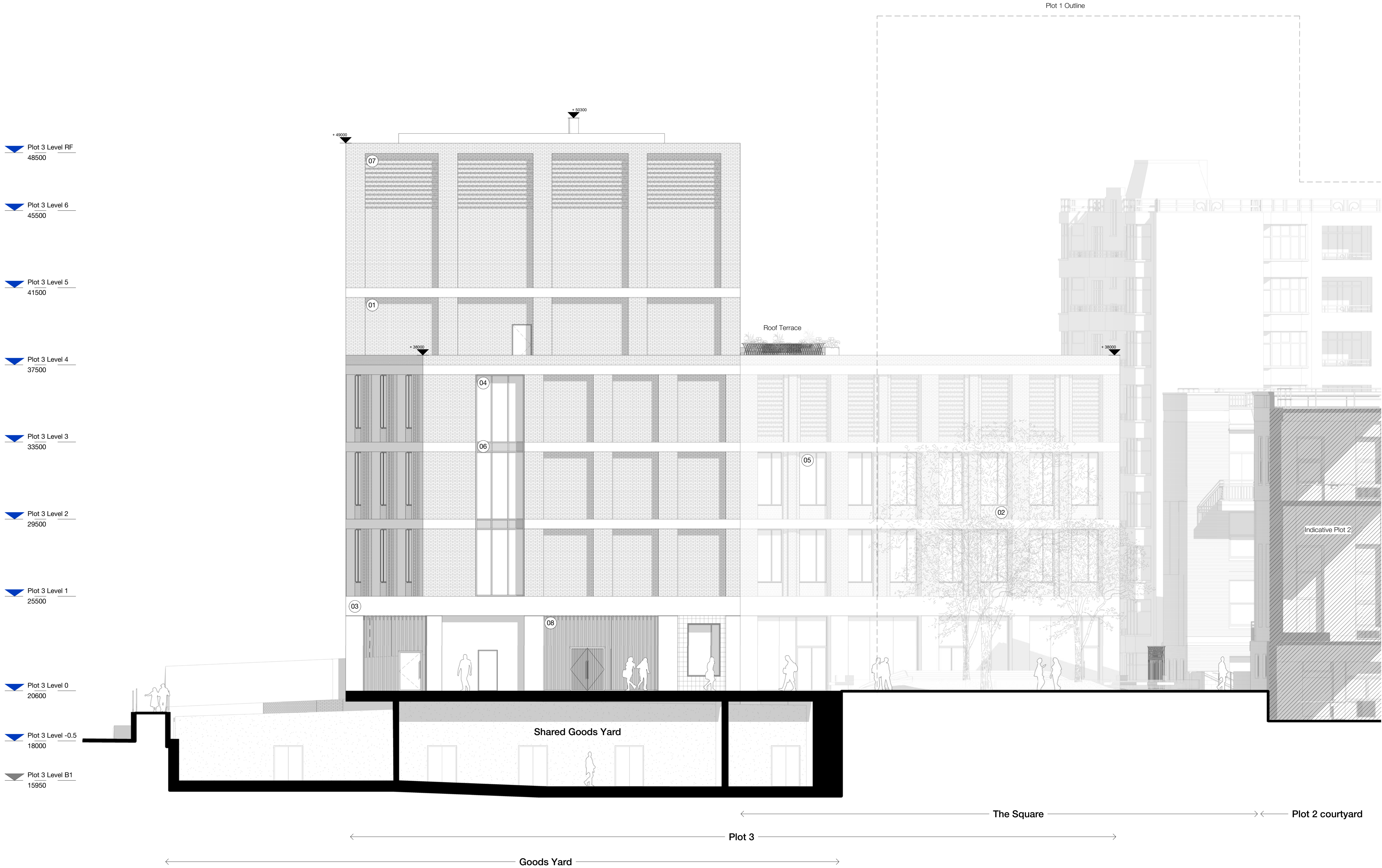
Status
P1

Purpose of Issue
Planning

Drawing No.

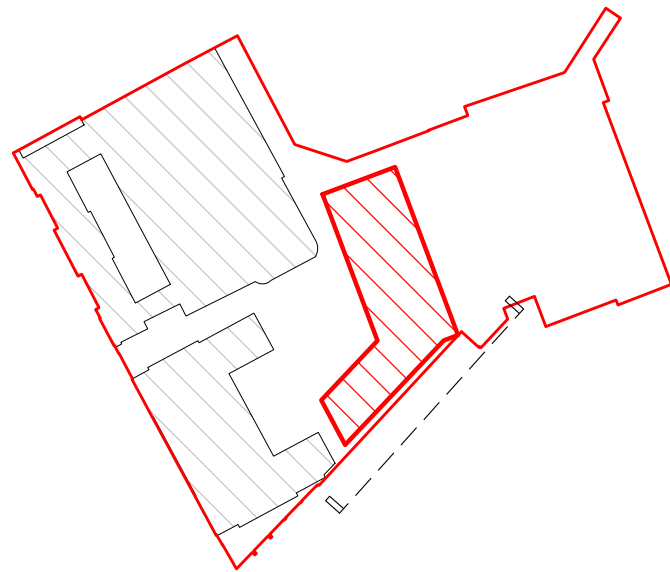
Rev

BEMP-HBA-P3-ZZ-DR-A-20-1203



Copyright Hawkins\Brown Architects
No implied licence exists. This drawing should not be used to calculate areas for the purposes of valuation. Do not scale this drawing. All dimensions to be checked on the site by the contractor and such dimensions to be their responsibility. All work must comply with relevant British Standards and Building Regulations requirements. Drawing errors and omissions to be reported to the architect. To be read in conjunction with Architect's specification and other consultant information.

Rev	Description	Date
-----	-------------	------



Site Plan: NTS

Material Palette

- Grey black and white multi tonal brick soft mud handmade texture
- Soldier coursed grey black and white multi tonal brick - soft mud handmade texture
- Pre-cast pigmented concrete
- Glazed curtain walling with anodized aluminium frames - colour RAL 7026 'Granite Grey'
- Windows with anodized aluminium frames - colour RAL 7026 'Granite Grey'
- Enamel-backed spandrel glazing with anodized aluminium frames - colour RAL 7026 'Granite Grey'
- Hit and miss brickwork to mechanical louvers
- Anodised aluminium railing bars to bike store - colour RAL 7026 'Granite Grey'
- Galvanised mild steel railing - colour to match bike store RAL 7026 'Granite Grey'
- Glazed brick - colour to match RAL 8029 'Pearl Copper'

0 1 2 3 5m

159 St John Street
London EC1V 4QJ

mail@hawkinsbrown.com
hawkinsbrown.com

Hawkins\Brown

Project
256 Gray's Inn Road
London
WC1X 8LD

Drawing
Plot 3 South Elevation -
Proposed

Scale @ A1
1 : 100

Date
May 2019

Drawn By

Checked By

Job Number
17056

Status
P1

Purpose of Issue
Planning

Drawing No.
BEMP-HBA-P3-ZZ-DR-A-20-1201

Rev

Plot 3 Level RF
48500

Plot 3 Level 6
45500

Plot 3 Level 5
41500

Plot 3 Level 4
37500

Plot 3 Level 3
33500

Plot 3 Level 2
29500

Plot 3 Level 1
25500

Plot 3 Level 0
20600

Plot 3 Level -0.5
18000

Plot 1

Roof Terrace

Plot 3