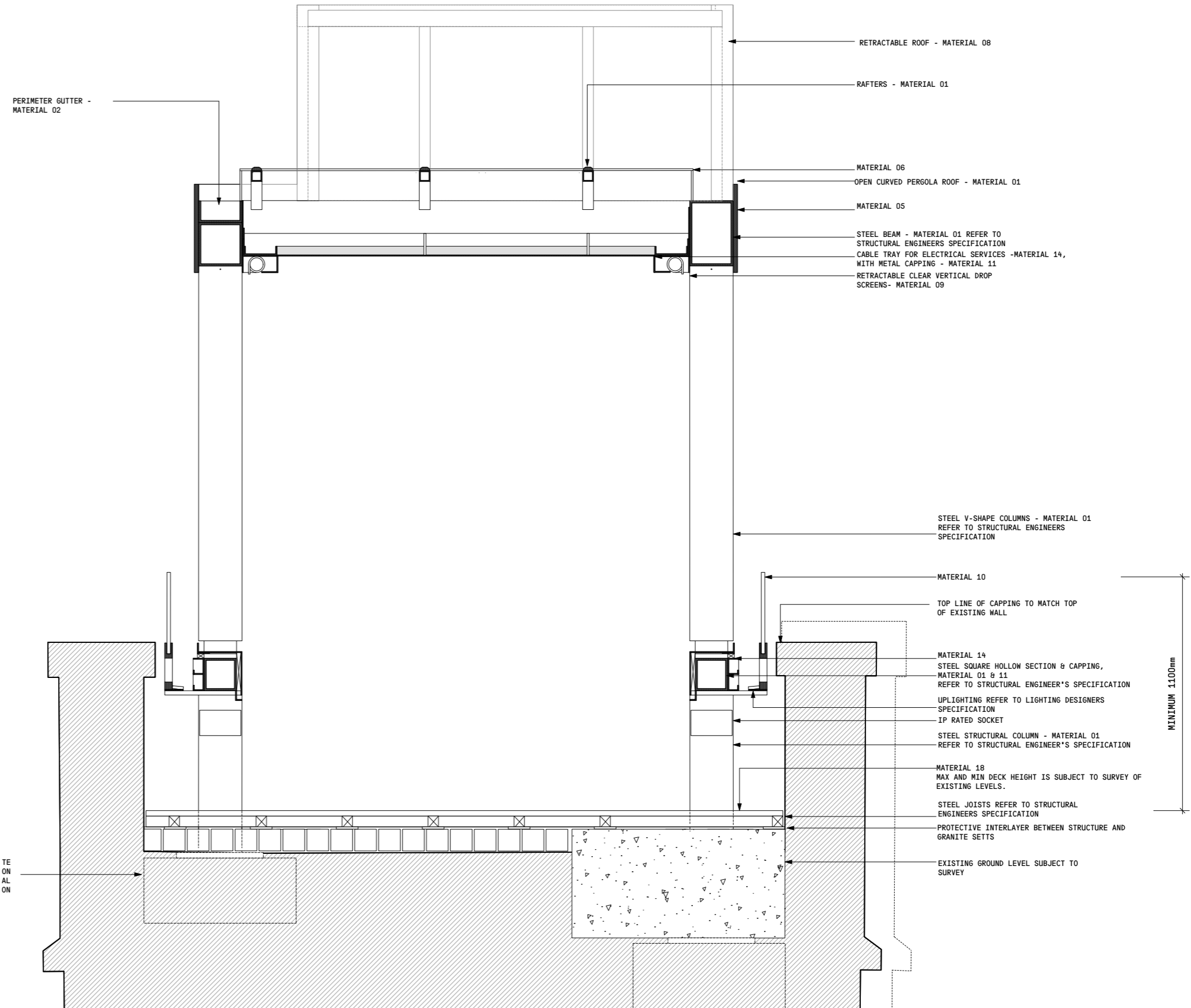


7.23 STRUCTURAL APPROACH

The structural strategy is for a series of pad foundations to be located beneath the cobblestones at the base of each structural column. The granite setts would be carefully removed for the pad foundation and then relaid above them to ensure preservation of the beautiful existing paving. Where new decking has been located, a steel raft is proposed to negotiate the extreme level change of the cobblestones.

Please refer to the structural engineer's report for further details.



NOTES/ MATERIAL SPECIFICATION:	
NO.	MATERIAL DESCRIPTION
01	STRUCTURAL STEEL, GALVANISED AFTER MANUFACTURE, COPPER METALLIC FINISH
02	CURVED GALVANISED STEEL OR GRP ROOF, COPPER METALLIC FINISH
03	FLAT ROOFING CONSTRUCTION LAID TO FALLS, COPPER METALLIC FINISH (BOTH FACES)
04	EXTERIOR GRADE WALL PANEL, COPPER METALLIC FINISH
05	RIBBED METAL SHEET, COPPER METALLIC FINISH
06	CLEAR SINGLE SKIN POLYCARBONATE ROOF WITH WHITE FRIT INSTALLED WITH FALL
07	POLYCARBONATE CLEAR GLAZED WALL PANELS
08	RETRACTABLE ROOF COMPRISING ETFE MEMBRANE WITH WHITE FRIT ON ROLLERS (MANUALLY OPERATED)
09	CLEAR PVC DROP SCREENS ON ROLLERS (MANUALLY OPERATED)
10	CLEAR FRAMELESS GLASS BALUSTRADE, CLAMP FIXED
11	SHEET METAL CAPPING, COPPER METALLIC FINISH
12	CONCERTINA SECURITY GATE COPPER METALLIC FINISH
13	EXISTING GRANITE SETTS (LAID TO FALLS)
14	GALVANISED CABLE TRAY, COPPER METALLIC FINISH
15	FLUSH STAIR SAFETY NOSING, COPPER METALLIC FINISH
16	GALVANISED STEEL BALUSTRADE, COPPER METALLIC FINISH
17	GALVANISED STEEL OR GRP PLANTER, COPPER METALLIC FINISH
18	SELF FINISH TIMBER COMPOSITE DECKING PLANKS ON ALUMINIUM BEARERS

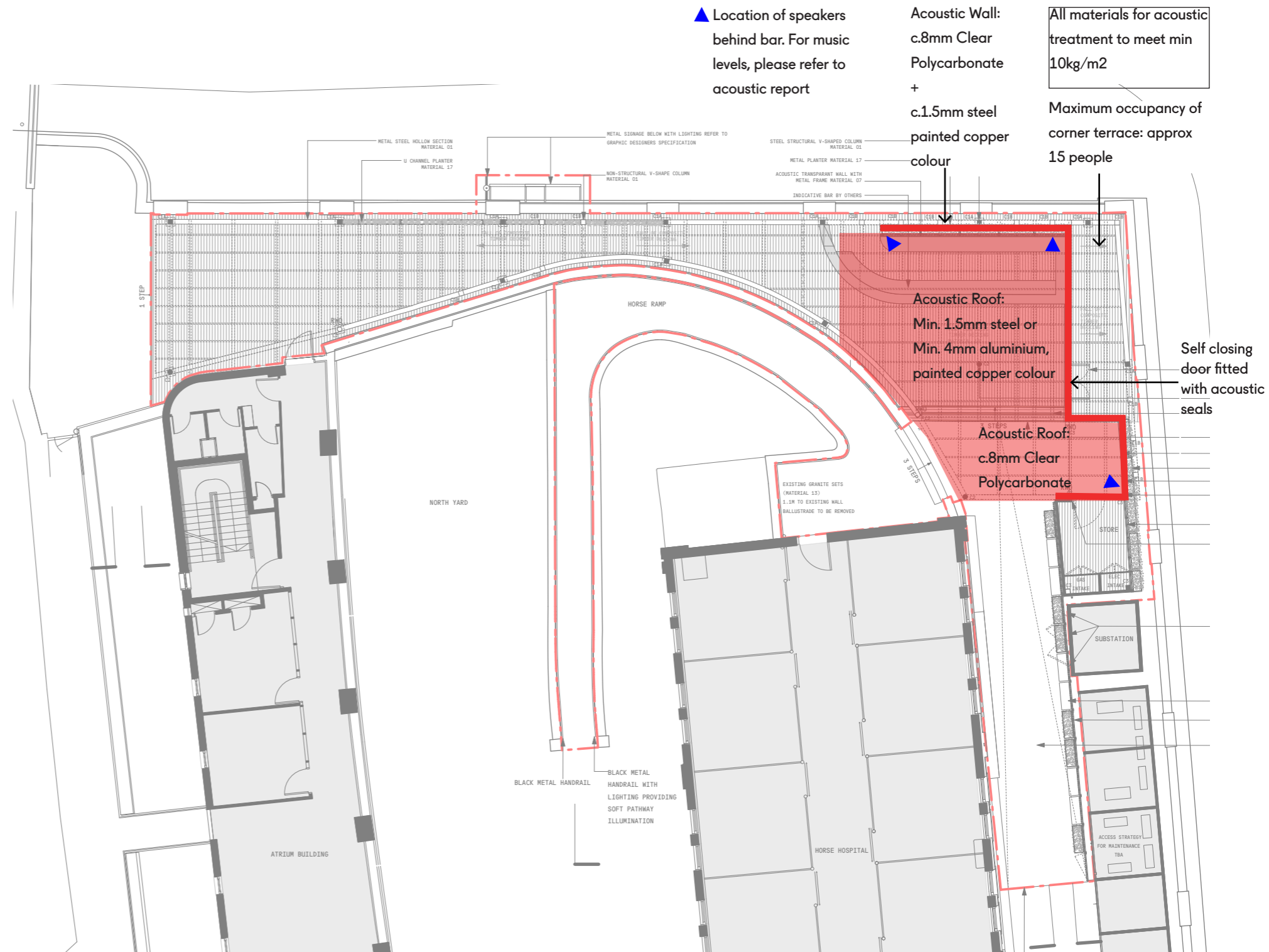
Detail section 1:20@A3

7.24 ACOUSTIC TREATMENT

From the start of the project, the design has sought to control and minimise the noise impact on the north-west corner that is positioned closest to a dwelling on Chalk Farm Road. Working closely with the acoustic consultant through a series of design iterations, the proposal is to enclose the bar and facade facing onto Chalk Farm Road with materials that meet a minimum of 10kg/m2. This will reduce the impact of speakers located within this portion of the proposal.

A corner terrace has been introduced beyond the acoustic enclosure, serving to break down the mass on the exterior elevation and activate the terrace from the street. This will have a maximum occupancy of approximately 15 people and will have low-level speakers.

An acoustic report has been prepared and submitted as part of this application which has assessed the proposals.



7.25 WATER DRAINAGE

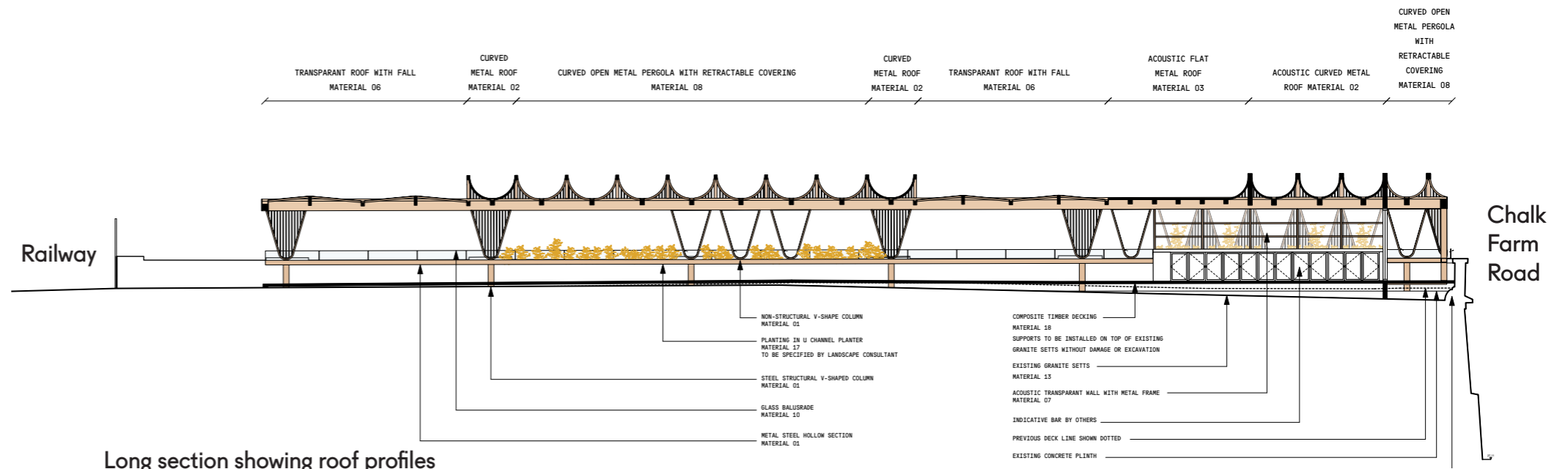
The water drainage strategy is for all the canopy roofs to drain to the south-eastern edge, in order conceal the downpipes within vertical column elements. All gutters are concealed within the datum line.

Water run-off will be used to irrigate planting where possible.

Please refer to MEP report for further information.



Roof Drainage concept diagram



Long section showing roof profiles

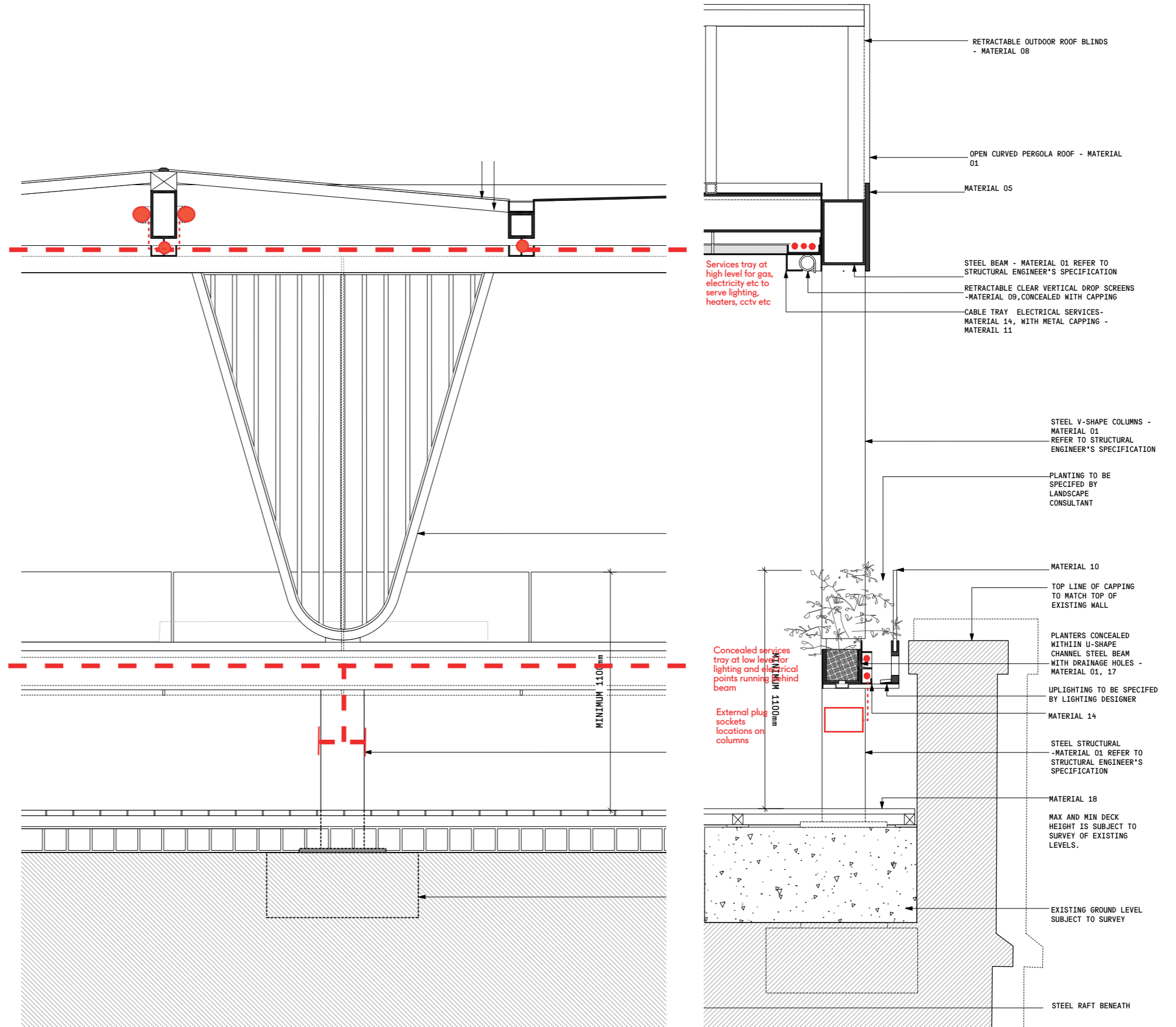
7.26 SERVICES ZONES

Services have been carefully integrated into the design to ensure they are carefully positioned within the structure.

Services are discretely located within service tray running along the inner face of the datum line to ensure future tenant's operational needs are integrated from the start. The metal capping detail with metallic finish conceals the services from sight.

A secondary services zone is located behind the lower beam for power supply to lighting and plug sockets.

Please refer to MEP report for further information.



Typical elevation/section detail 1:20@A3

7.27 EXTERNAL LIGHTING

The proposed lighting scheme includes a combination of amenity and architectural accent lighting, ensuring a safe and pleasant user experience.

Architectural lighting enhances key architectural structures, aiding with space legibility. Dedicated amenity lighting illuminates the access routes and highlight key nodes.

-The Canopy Elevations will receive a soft uplighting effect at mid level complemented with discrete accents at high level expressing the undulating profile of the vaulted roof sections. Care has been taken to develop details and enclosures that shield and conceal the light fittings, preventing any potential glare and reducing light spill.

- Lighting to the Maker's pathway will be provided by discrete shielded wall lights on the shop fronts. Wall lights on the Horse Hospital facade are recommended only at the entrances to the building. They should have a soft beam distribution and should be installed at a lower height. A soft illumination of the heritage wall behind the shops is proposed. This wall is visible through the glazed front and back elevations; adding lighting to it will transform this heritage wall into a legible perimeter that contributes as well to the perceived brightness.

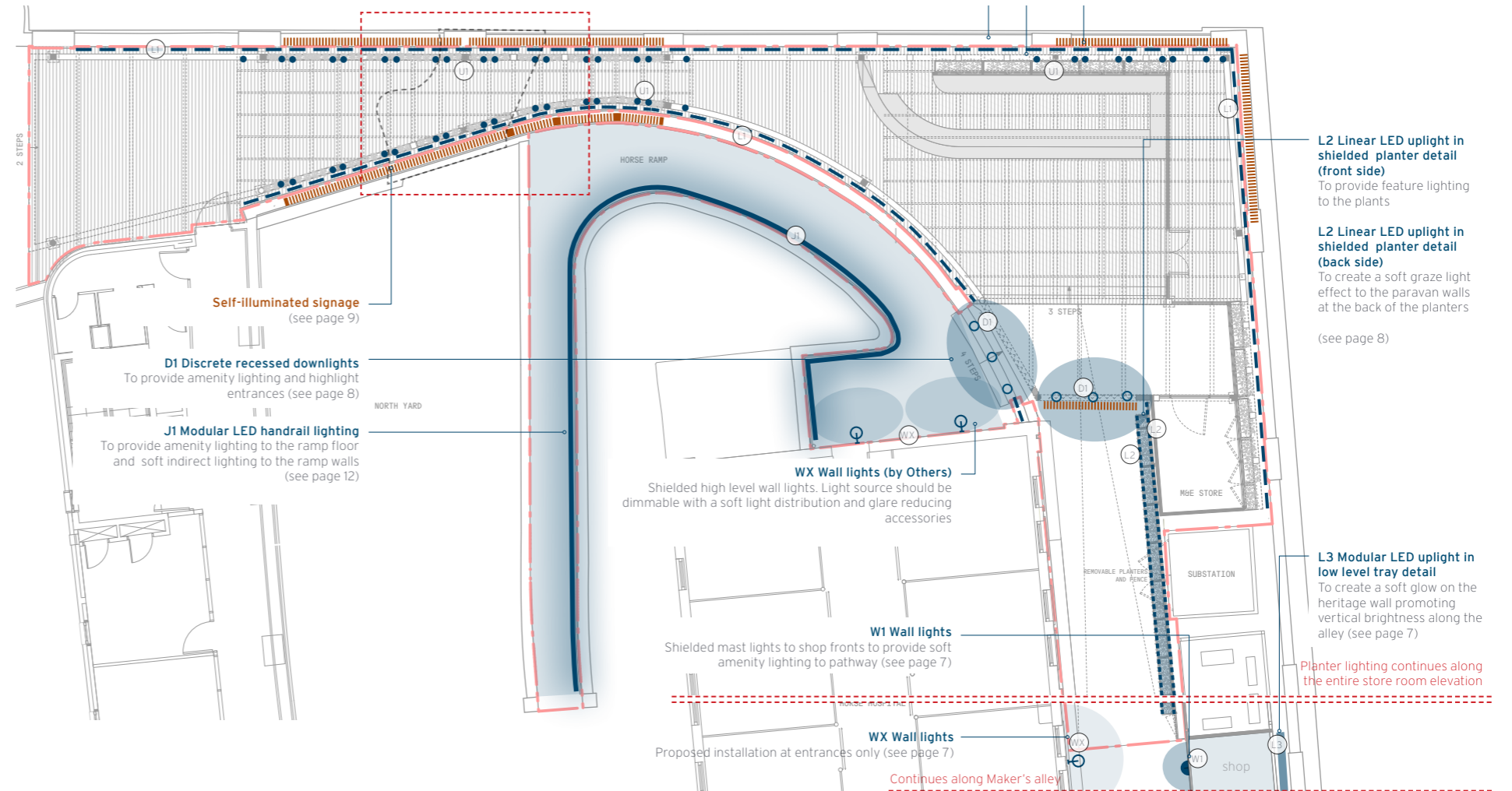
- Lighting to the North Yard ramp will be recessed in the new handrail profiles providing low level homogeneous illumination of the floor and a soft indirect effect on the brick walls.

- Additional amenity lighting to the entrances will be provided by discrete downlights recessed in the datum.

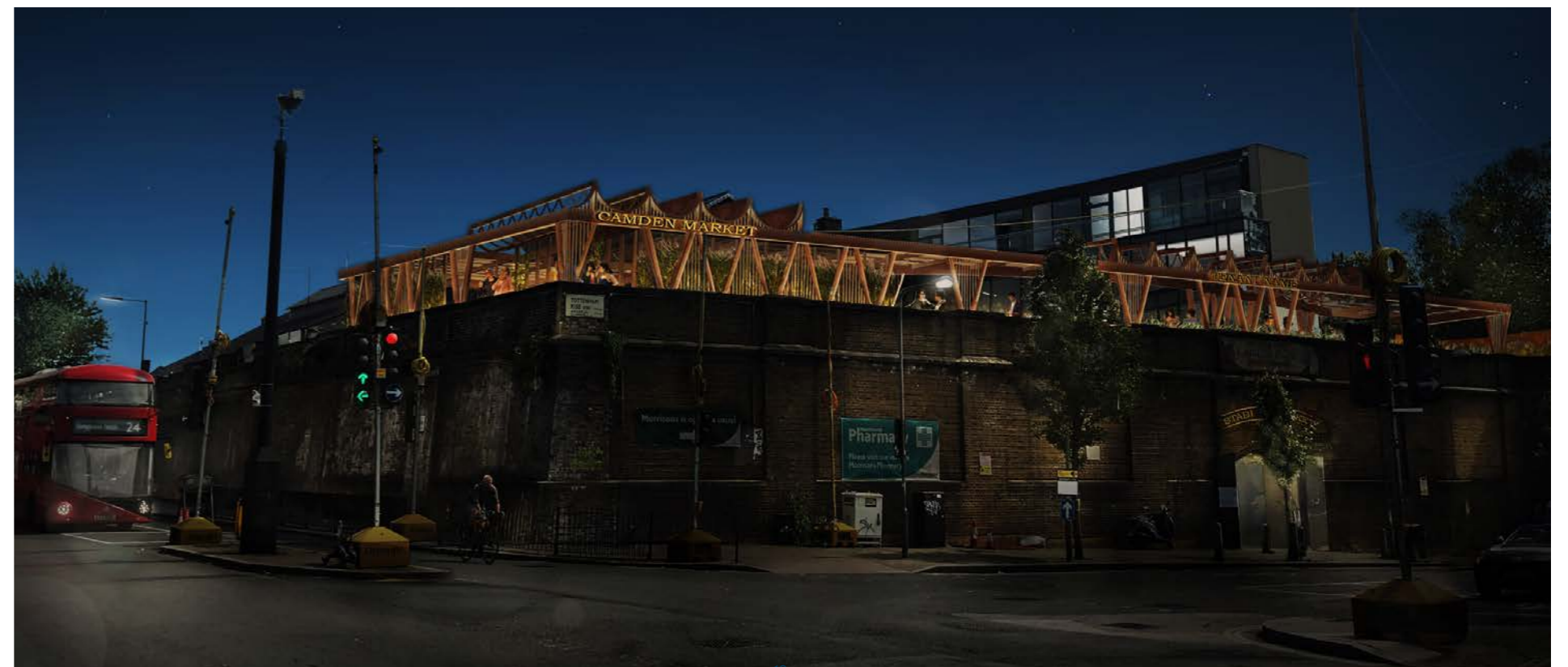
- Feature lighting is proposed to be integrated into the planters - illuminating the tall paravan panels at the back and an additional detail at the front uplighting the plants.

- Improvements to the entrance lighting on street level include the replacement of the existing flood lights with shielded wall lights that produce a softer warm light effect.

All proposed lighting is dimmable and will be carefully balanced via a lighting controls system to create an attractive environment and comfortable experience that is ecologically responsible and mindful towards the residential context of the development.



Lighting Plan



Night time view from Chalk Farm Road

JUNIPER CRESCENT ELEVATION

Not to scale

Lettering Signage Dimensions

'Camden Market'	w5213mm x h380mm
'Tenant Name'	max. w7145mm x max. h380mm

7.28 SIGNAGE

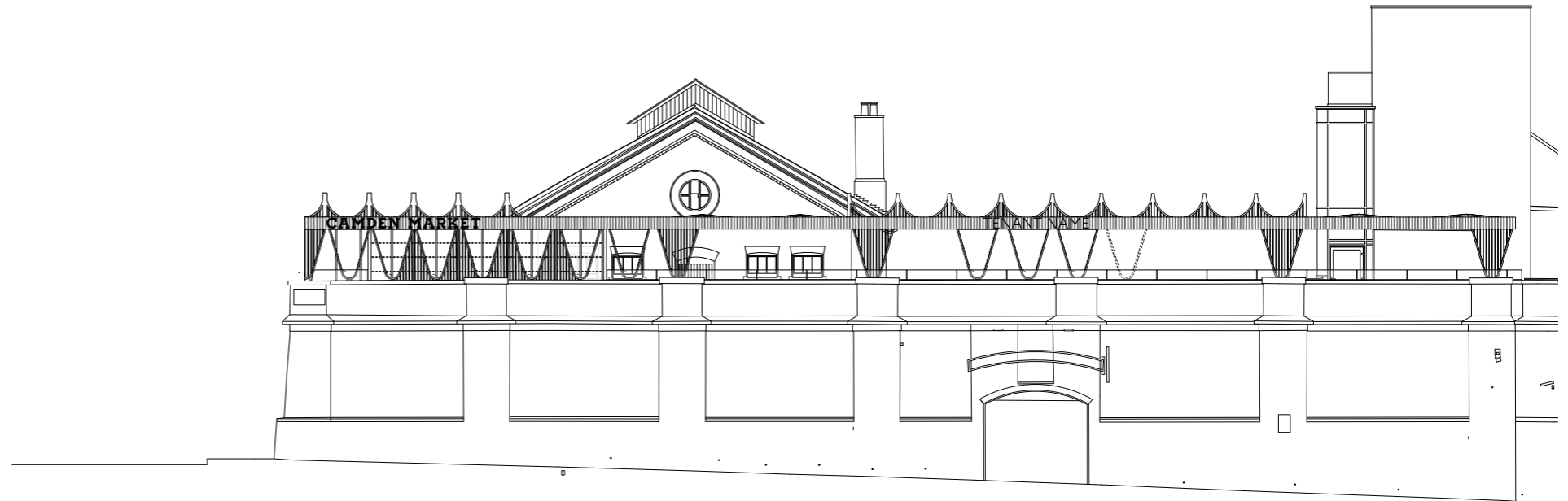
Signage has been integrated into the datum level of the canopy.

The fonts form part of Labtech's wider brand. The letters are painted metal. There are two signage strategies forming part of this proposal:

Option 1 is black lettering with illumination.

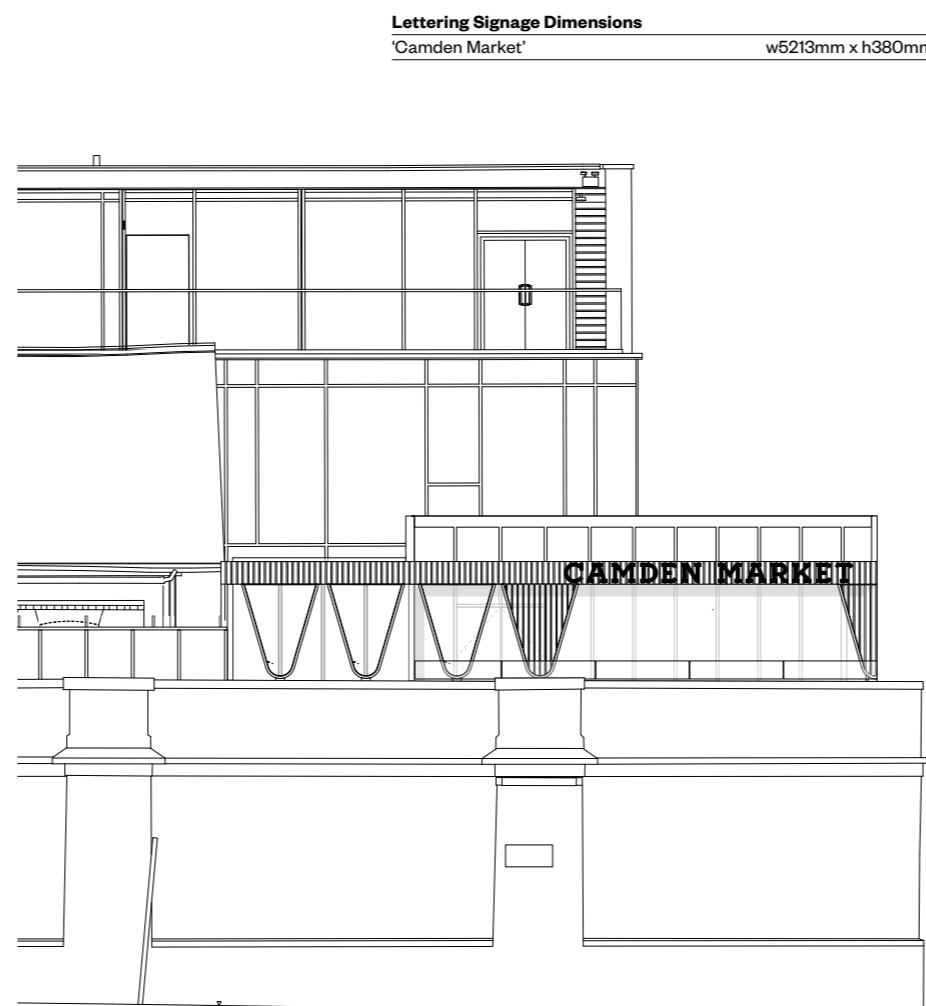
Option 2 is white lettering with illumination.

For fonts and details, please refer to Signage document by graphic designers.



Graphic Design Proposal for Signage

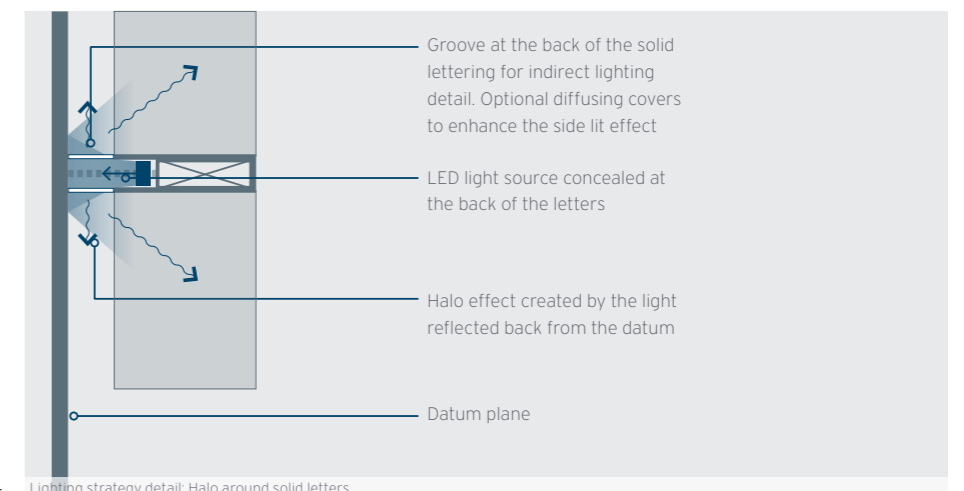
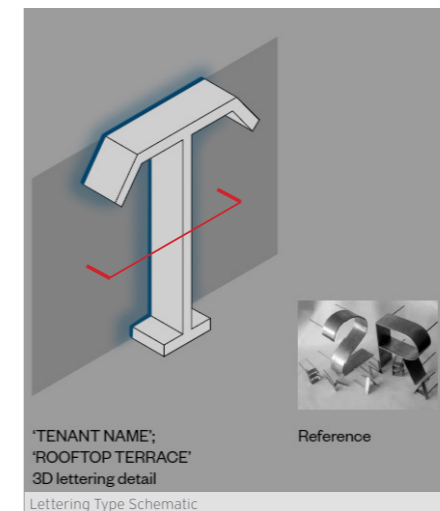
Information Required	Answer
What is the height from the ground to the base of the advertisement?	Max height = 8.7m
What is the maximum projection of the advertisement from face of building?	80mm
Depth of advertisement	80mm
What will the materials be made of?	Powder coated/ Painted metal
Will the sign be illuminated internally or externally?	Internally
Illuminance levels (cd/m ²)	600cd/sq.m in compliance with ILP GN 01/20
Will the illumination be static or intermittent?	Static



Graphic Design Proposal for Signage

Lettering Signage Dimensions

'Camden Market'	w5213mm x h380mm
-----------------	------------------



Illuminated Signage Details