

7.13 ACCESS AND ENTRANCE ON MAKER'S ALLEY

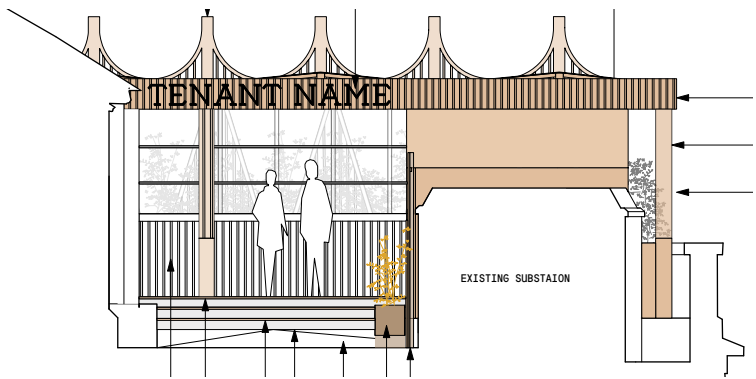
The intention is to smarten the arrival area at the top of Maker's Alley beside the Horse Hospital.

The proposed design of this area shows a new screen composed of vertical slats in keeping with the horse stable concept, which conceals the substation and mechanical plant units and stores behind. The slats have varied profiles with V-shape patterns visible on approach. Metal planters sit in front of the metal screen which are planted with beautiful grasses and other robust plants. The colour of the planters and screens gradients from black, the colour of the retail units on Maker's Alley, to copper-colour, the colour of the new terrace canopy. This gradient draws the visitor towards the terrace. This is conceived as a transition space between the retail units and the new terrace, and is significantly lined with planting to introduce the architectural language of the terrace beyond. The rhythm of the planters responds to the elevation of the Horse Hospital to which it runs parallel.

Wheelchair access will be via Maker's Alley. Three stairs are located before the bar to access the timber deck. A temporary ramp will be available to anyone in a wheelchair for access on to the deck, easily stored nearby in the store room behind the arrival screen. A handrail is installed on these steps. Once on the deck, the timber decking is considerably more wheelchair friendly than the cobblestones, which are retained intact beneath.



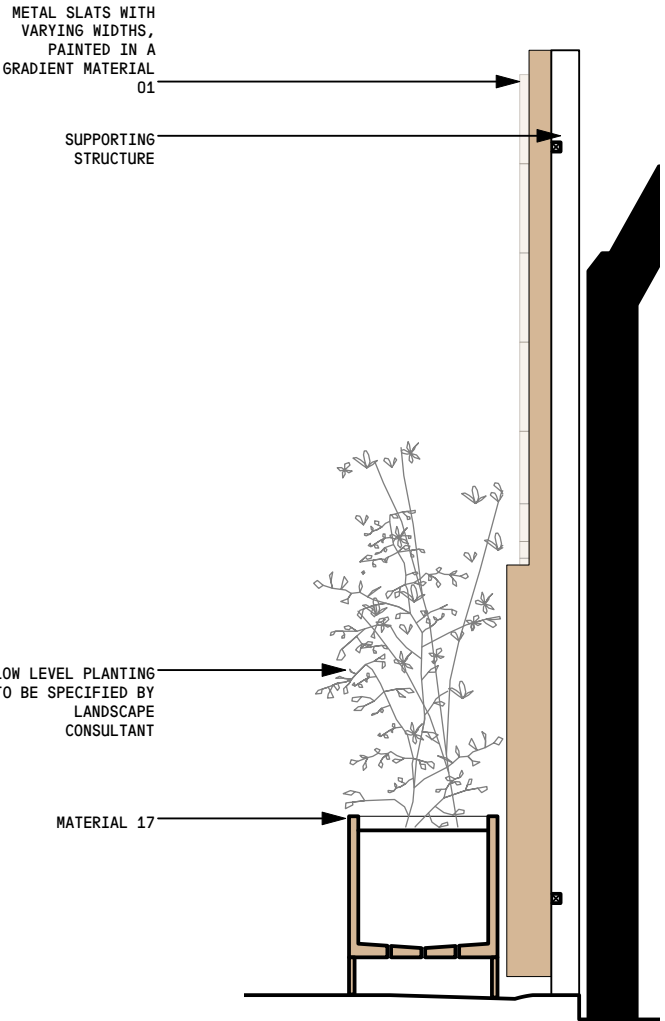
Screens: Precedent of vertical metal slats with varying depth to create an image



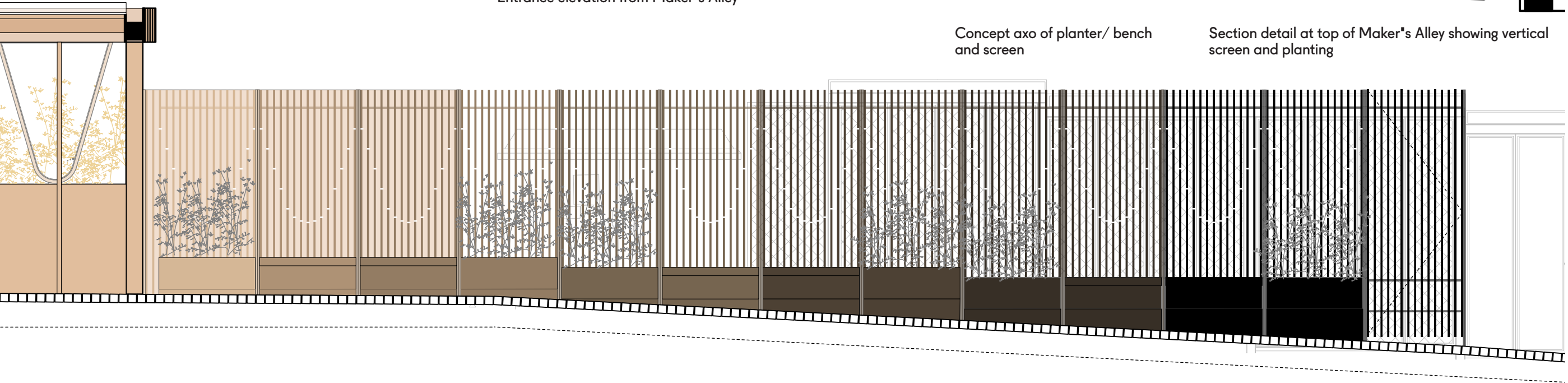
Entrance elevation from Maker's Alley



Concept axo of planter/ bench and screen



Section detail at top of Maker's Alley showing vertical screen and planting



Long section showing new screen with planting at the top of Maker's Alley



7.14 IMPRESSION OF MAKER'S ALLEY ENTRANCE



The entrance at the top of Maker's Alley is open and welcoming, with a direct view of the bar ahead.



7.15 IMPRESSION OF ENTRANCE FROM THE HORSE RAMP

