

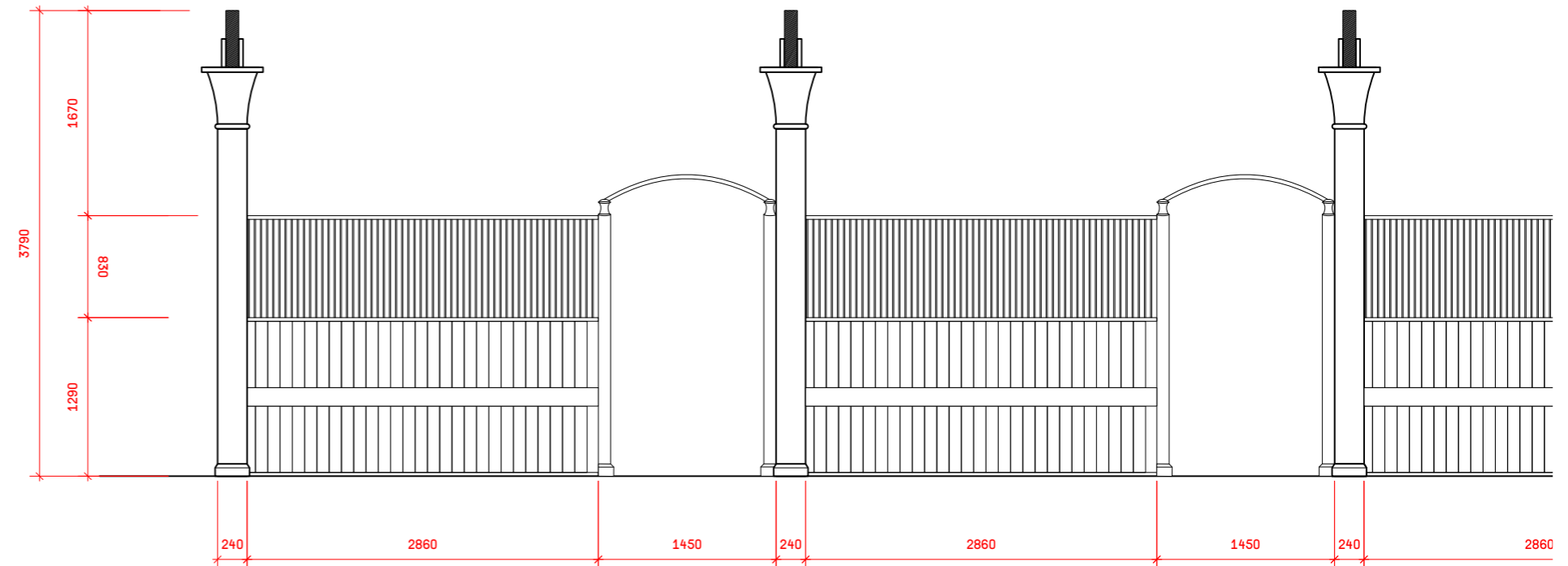
7.0 DESIGN PROPOSAL

6.3 ARCHITECTURAL CONCEPT

The design concept seeks to celebrate the history of the site as horse stables, and "extend" the stunningly preserved interior horse stable to the outside, with a contemporary take on stable design.

The starting point of the project was an analysis of the existing horse stables inside the Horse Hospital. There is a clear datum line in elevation separating lower timber boarding from upper open metal slats for the horses to have visibility beyond their enclosure. There are also decorative curved elements articulating entrances, and bell columns.

The rhythms, materials and logic of the historic stable design have inspired the proposal.



Sketch of interior elevation of horse stables in Horse Hospital

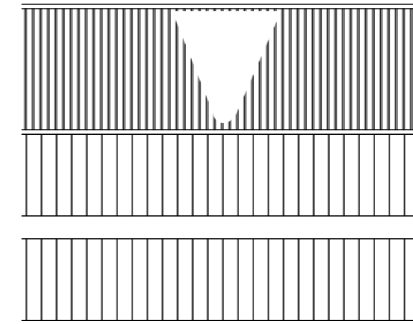


Historic Stable Design: Horse Hospital Interior

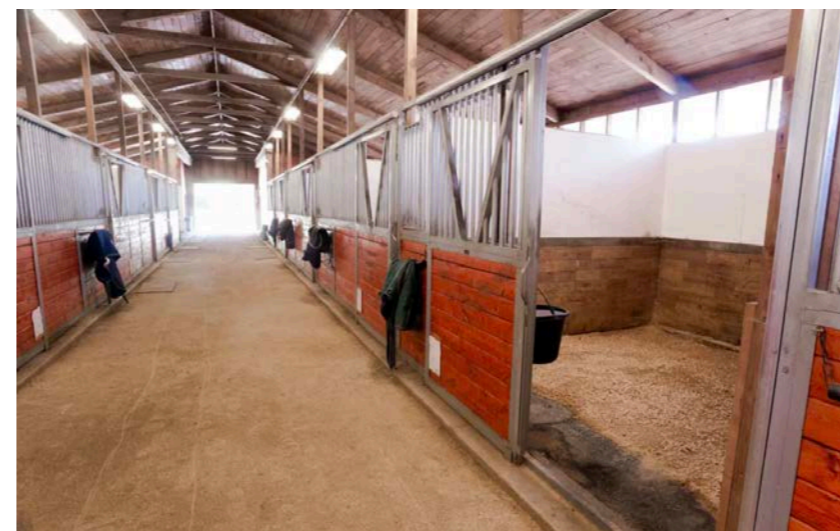
7.1 CONTEMPORARY HORSE STABLE DESIGN

Seeking further inspiration from contemporary references, stable designs today tend to maintain this principle of a datum line and metal slats, but often have triangular openings in the metal grill area for horses to project their head through and gain more sense of openness. These triangular openings sometimes have triangular panels that close this opening when required.

The design proposal incorporates these aspects of contemporary stable design in order to create a playful reinterpretation of the horse stables, at the same time alluding to the historic stables.



Abstract sketch of contemporary horse stable design



Contemporary stable design precedents

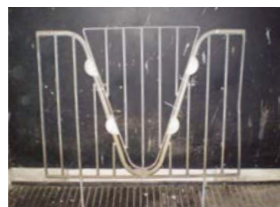
7.2 DESIGN PROCESS

The V-shaped openings became a key element of the design and are integrated into the elevation as primary structural elements supporting a canopy above.

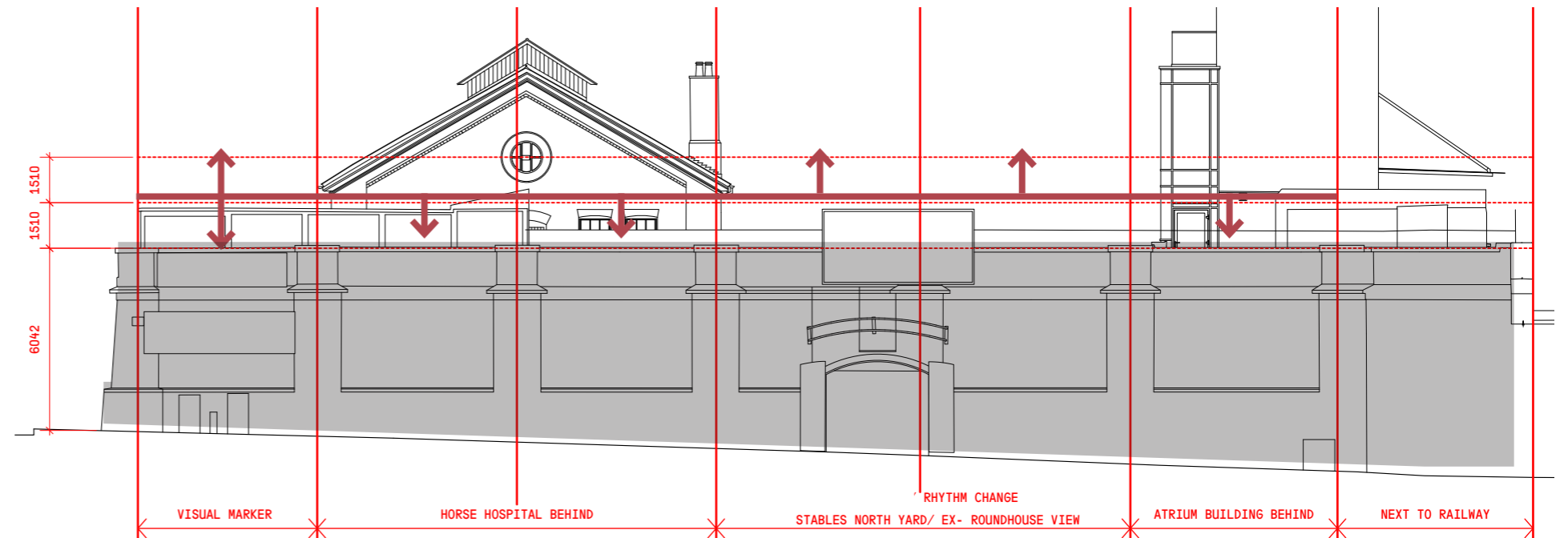
A datum line was introduced to align with the eaves of the Horse Hospital and this is then raised with a sculptural form in certain locations according to our analysis of the site's urban rhythms.

The canopy pulls up on the north-west corner along Chalk Farm Road to create a visual marker; it pulls down in front of the Horse Hospital to frame its gable, it pulls up in front of the north yard to indicate the presence of the North Yard beyond and articulate the North Yard entrance below which is envisaged to become a key access point with the upcoming Morrisons Development site, and it pulls down in front of the Atrium building beside the railway.

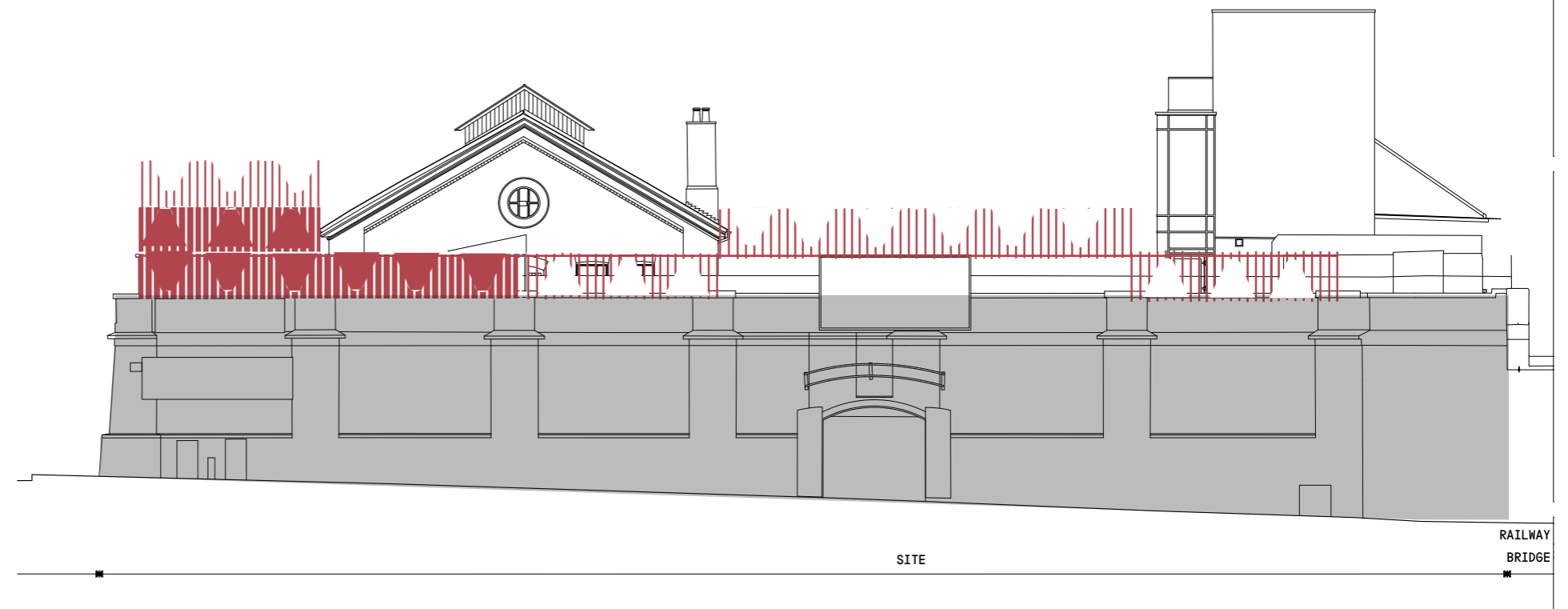
These rhythms are reflected in the initial sketches and the final proposal.



Concept Precedent Collage:
Canopy (above) + Structure (below)



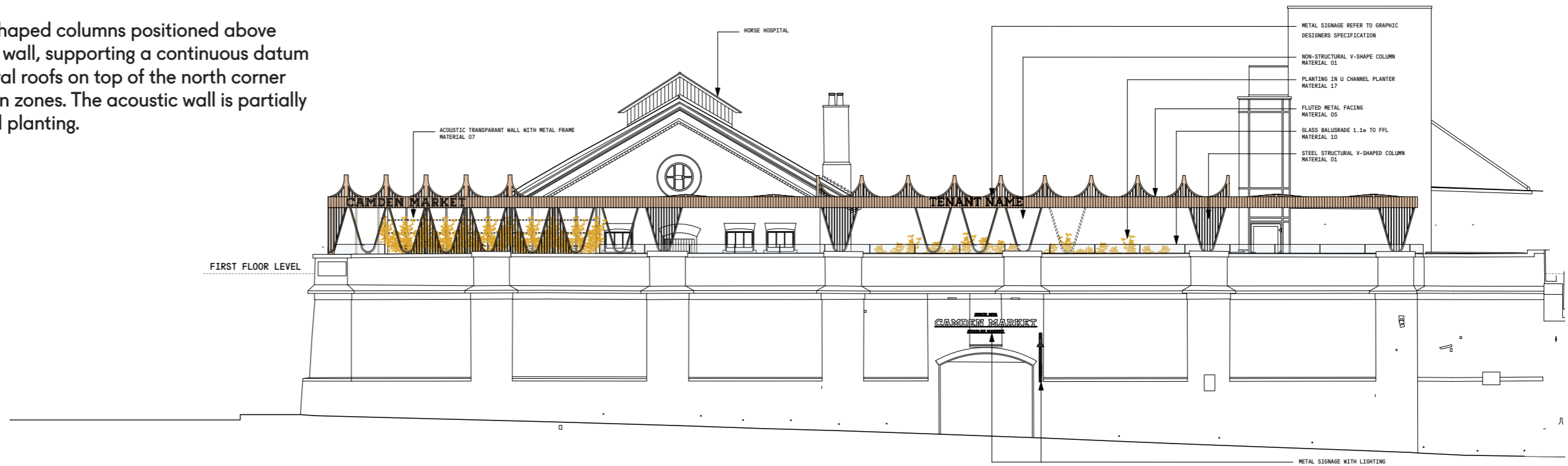
Urban Rhythms/Design Principles



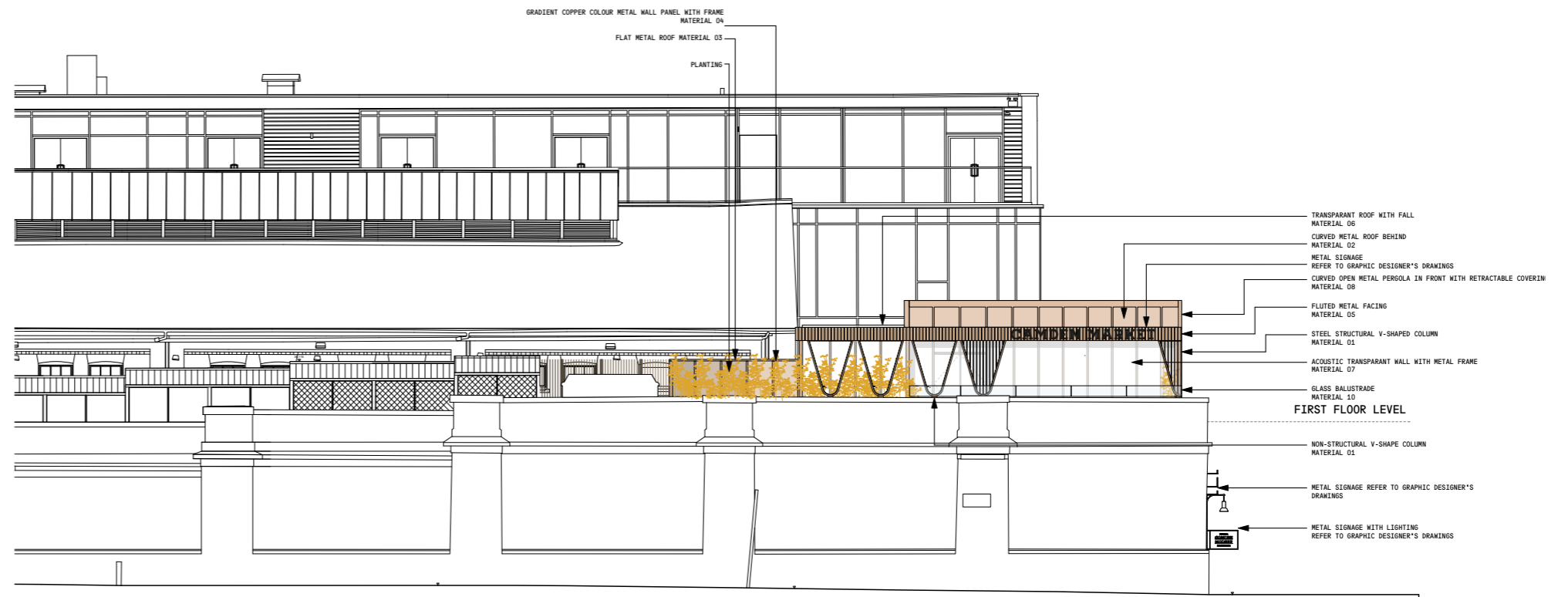
Translation of urban rhythms into initial sketch

7.3 PROPOSED ELEVATIONS

The elevations show V-shaped columns positioned above each pier of the existing wall, supporting a continuous datum line above, with sculptural roofs on top of the north corner and North Yard elevation zones. The acoustic wall is partially concealed by integrated planting.



Access Road Elevation



Chalk Farm Elevation

7.4 RELATIONSHIP TO HORSE HOSPITAL

The proportions and heights of the proposal are generated from the Horse Hospital.

- ① The datum line aligns with the eaves of the Horse Hospital.
- ② The detail of the datum line is inspired by the dentil details of the Horse Hospital and aligns with this detail.
- ③ The sculptural roof was generated in form from the porthole of the Horse Hospital gable end and aligns with the porthole position.
- ④ The slats within the V shaped columns are inspired by the Horse Hospital interior listed stables.
- ⑤ The colour of the proposal has been directly sampled from the dentil detail present of all the elevations of the Horse Hospital.



View of Horse Hospital

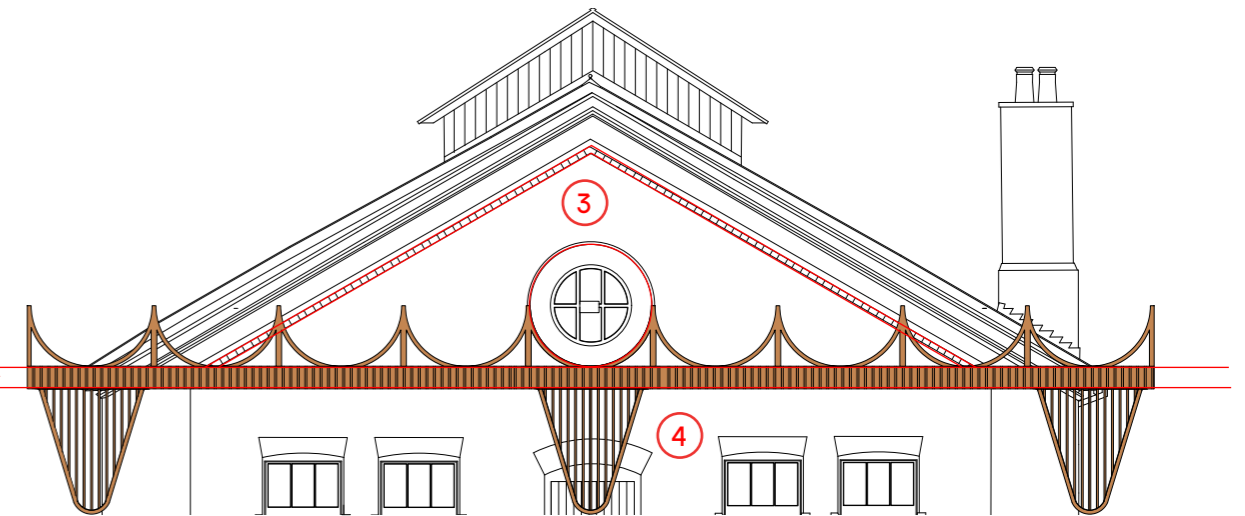
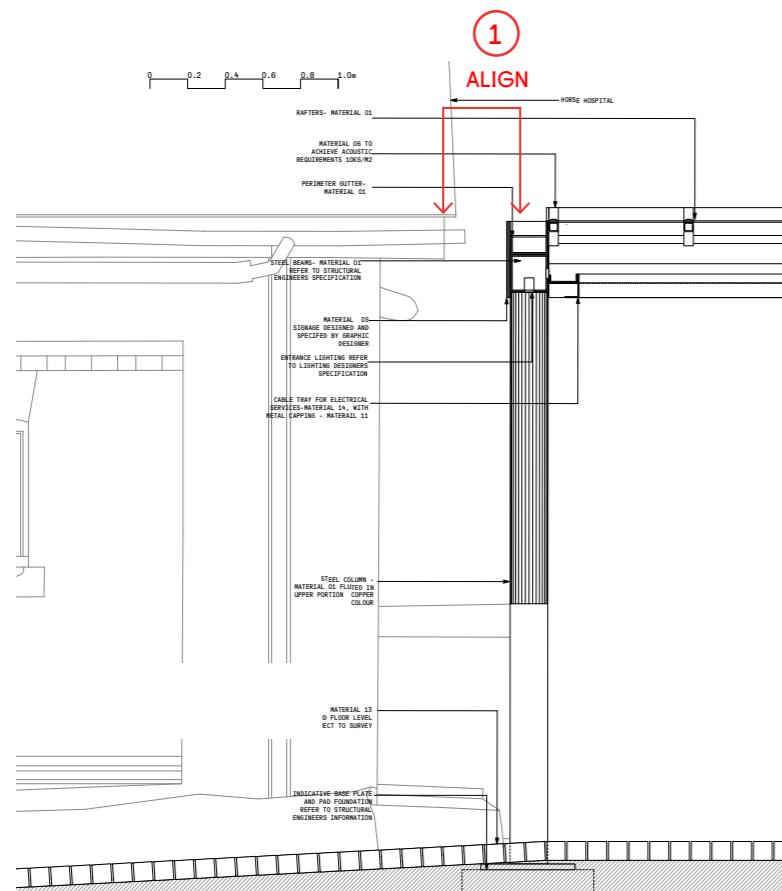
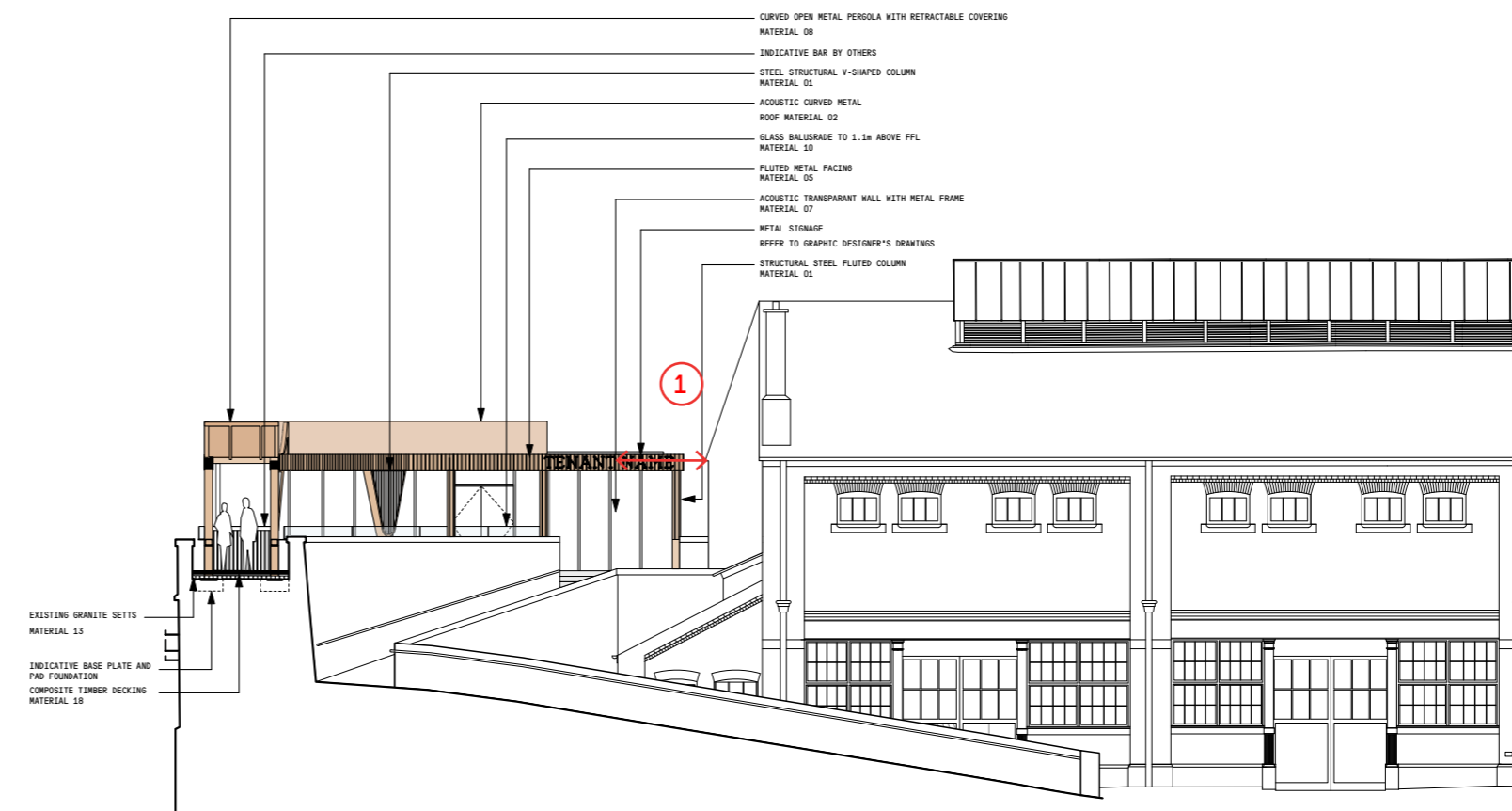


Diagram of Horse Hospital gable elevation and proposal superimposed



Section detail showing relationship to Horse Hospital



Cross section showing relationship of Horse Hospital to Proposal

7.5 POSITIVE IMPROVEMENTS IN RELATION TO HORSE HOSPITAL

There are a number of positive improvements proposed within of the proximity to the Horse Hospital, which will reinstate the surrounds to its original state.

- Existing Horse Hospital Gable Entrance Platform will be reinstated to its original form:

1. The existing timber and perspex balustrade will be removed.
2. The existing timber decking in this area will also be removed revealing the historic granite setts.
3. No additional balustrade will be required in this area as the finish floor level to the top of the historic wall exceeds the height of 1100mm.

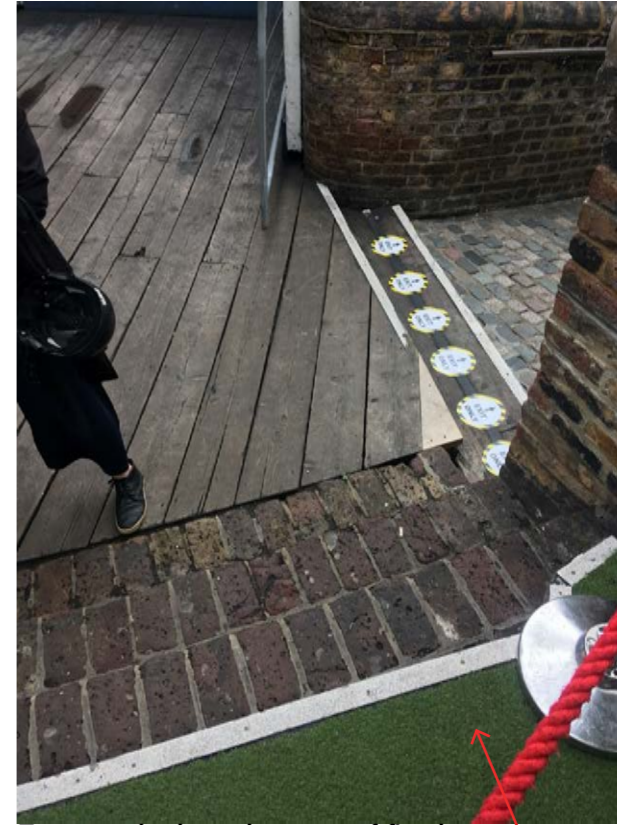
- Existing Maker's Alley Ramp will be reinstated:

1. The existing timber deck and steps will be removed within this area revealing the historic ramp and granite setts.
2. The proposed timber deck is set back away from the horse hospital corner to create a entrance which is authentic to the history of the place.

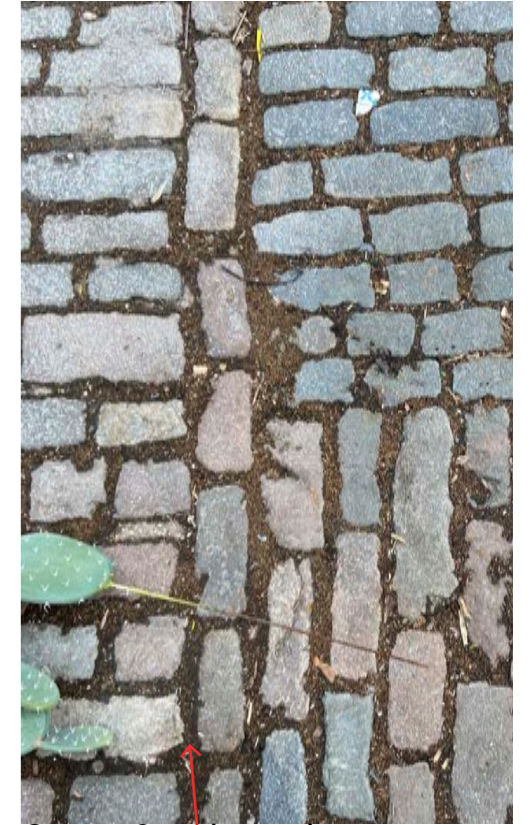
- The proposal will not touch the Horse Hospital unlike the existing structure.



Horse Hospital Entrance Platform



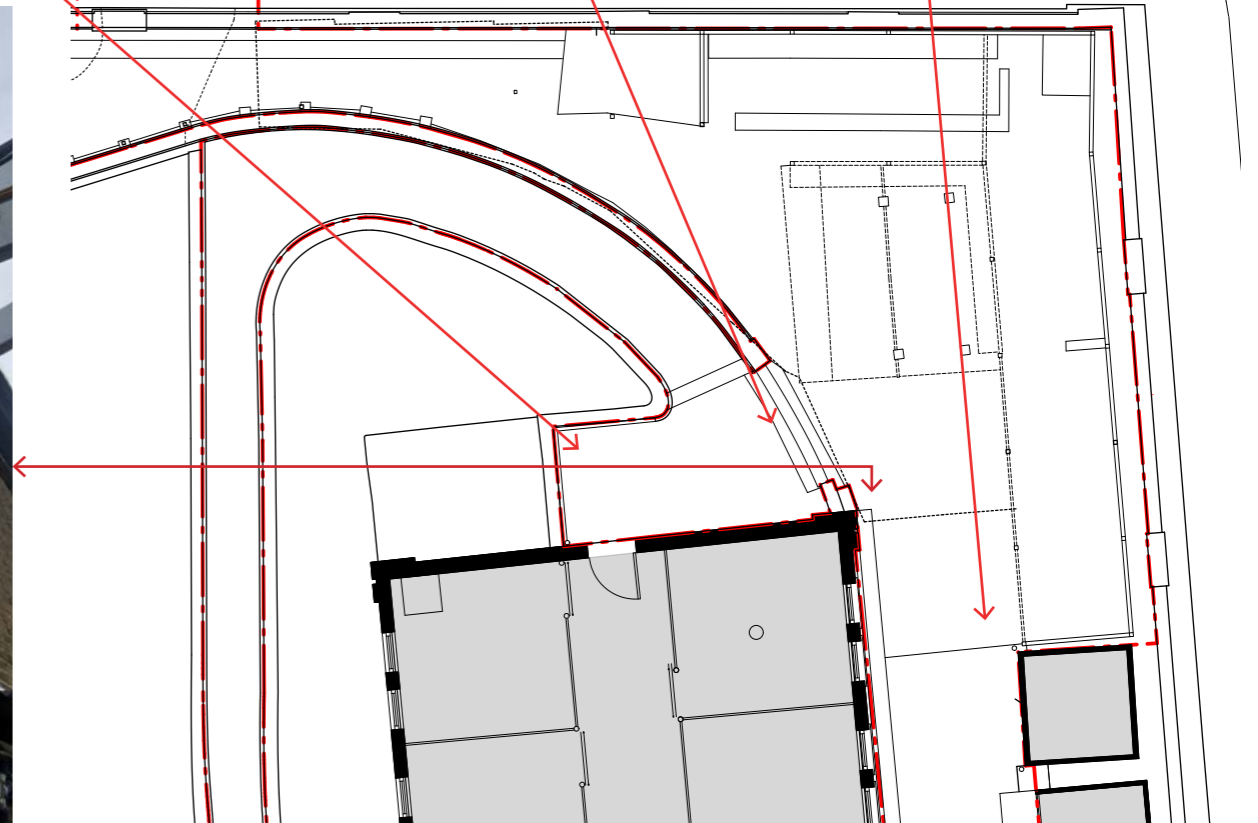
Existing deck and astroturf finish



Granite Setts beneath



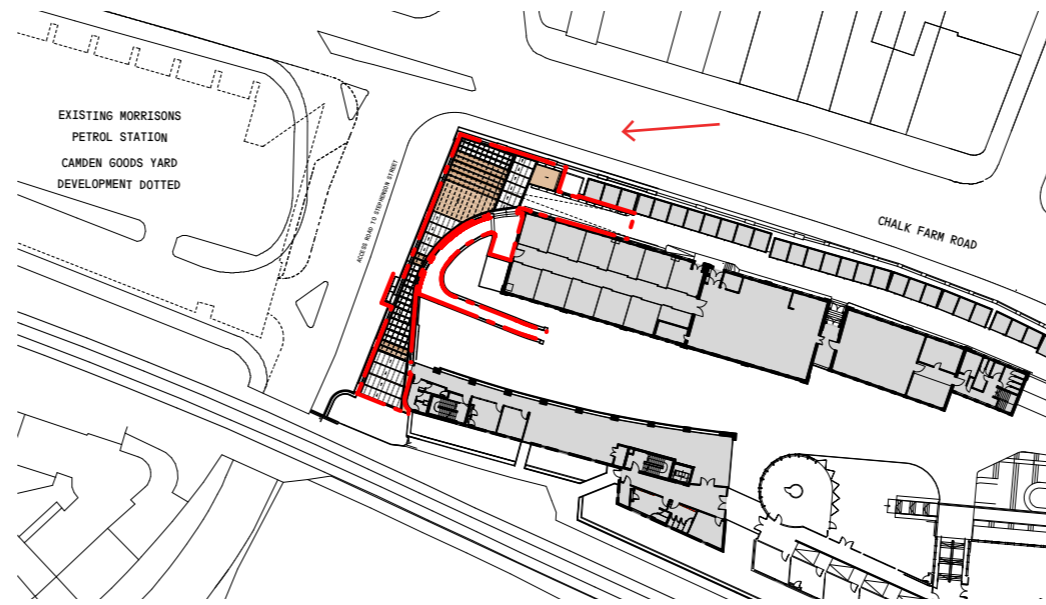
Existing Structure -to be removed.



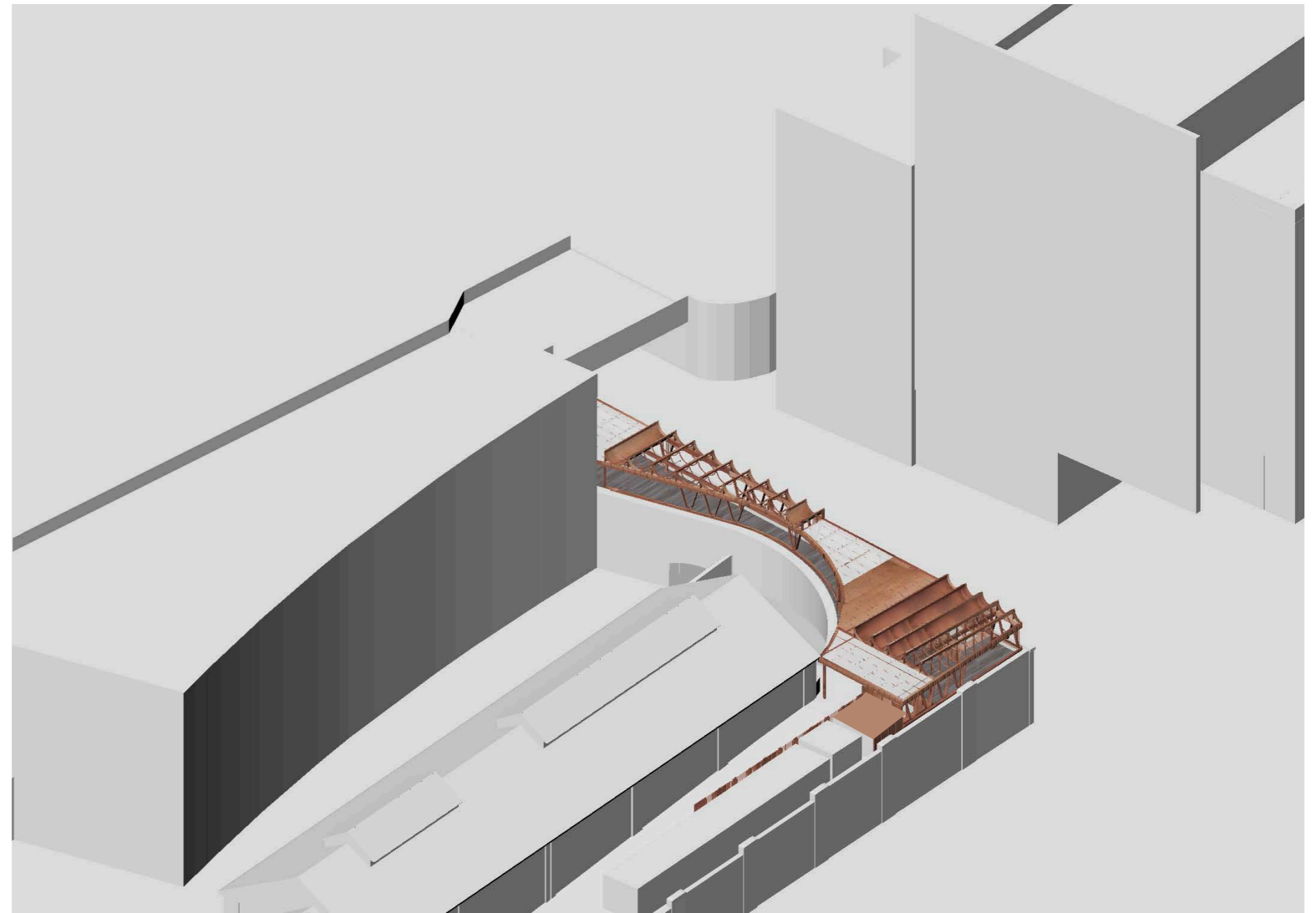
Existing First Floor Plan

7.6 PROPOSED MASSING

The massing is very modest with respect to the surrounding emerging streetscape.



Site Plan



Aerial view of proposal

←
Indicative outline
of proposed
Morrisons
site (PP
2017/3847/P)

Access Road to Juniper Crescent

EXISTING GRANITE SETTS
MATERIAL 15
INDICATIVE BASE PLATE AND
PAD FOUNDATION
COMPOSITE TIMBER DECKING
MATERIAL 18

Application
Proposal

Section through access road

7.7 IMPRESSION FROM CORNER OF CHALK FARM ROAD



7.8 IMPRESSION FROM CHALK FARM ROAD

