




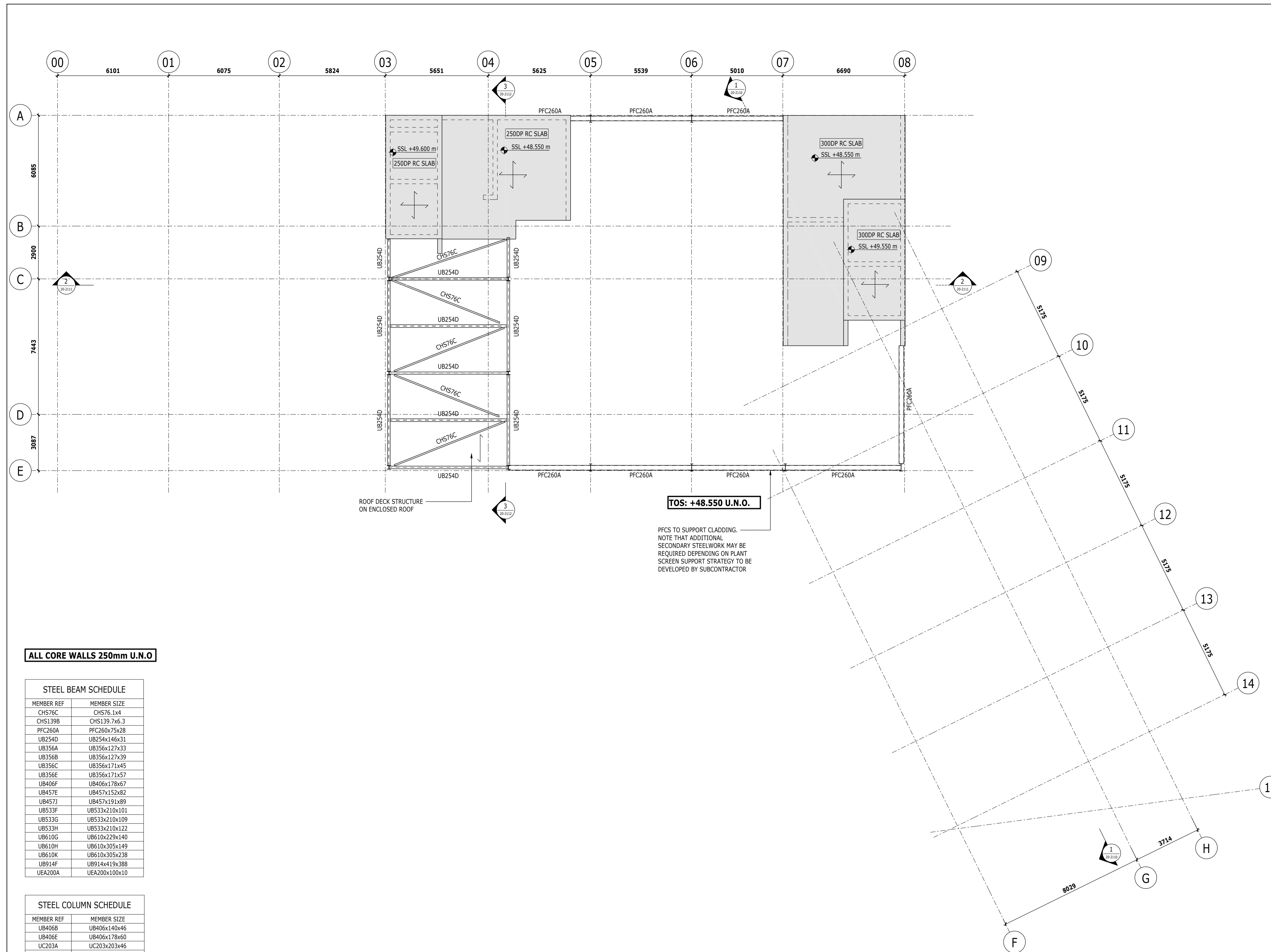
COPYRIGHT RAMBOLL UK LIMITED. ALL RIGHTS RESERVED. THIS DOCUMENT IS ISSUED FOR THE PARTY WHO COMMISSIONED IT AND FOR THE SPECIFIC PURPOSES CONNECTED WITH THE PROJECT ONLY. IT SHOULD NOT BE RELIED UPON BY ANY OTHER PARTY OR USED FOR ANY OTHER PURPOSE. RAMBOLL ACCEPTS NO RESPONSIBILITY OR LIABILITY WHICH MAY ARISE FROM RELIANCE OR USE OF THIS DOCUMENT OR THE DATA CONTAINED HEREIN BY ANY OTHER PARTY OR FOR ANY OTHER PURPOSE.

Notes

- DO NOT SCALE FROM THIS DRAWING
- ALL DIMENSIONS ARE MILLIMETRES U.N.O.
- ALL LEVELS ARE IN METRES ABOVE ORDANCE DATUM U.N.O.
- THIS DRAWING IS TO BE READ IN CONJUNCTION WITH ALL RELEVANT ARCHITECTS AND ENGINEERS DRAWINGS AND SPECIFICATIONS.

KEY TO SYMBOLS

-  COMPULSORY ACTION REQUIRED
-  FOR INFORMATION
-  WARNING OF A RESIDUAL RISK



ALL CORE WALLS 250mm U.N.O

STEEL BEAM SCHEDULE

MEMBER REF	MEMBER SIZE
CHS76C	CHS76.1x4
CHS139B	CHS139.7x6.3
PFC260A	PFC260x75x28
UB254D	UB254x146x31
UB356A	UB356x127x33
UB356B	UB356x127x39
UB356C	UB356x171x45
UB356E	UB356x171x57
UB406F	UB406x178x67
UB457E	UB457x152x82
UB457J	UB457x191x89
UB533F	UB533x210x101
UB533G	UB533x210x109
UB533H	UB533x210x122
UB610G	UB610x229x140
UB610H	UB610x305x149
UB610K	UB610x305x238
UB914F	UB914x193x388
UEA200A	UEA200x100x10

STEEL COLUMN SCHEDULE

MEMBER REF	MEMBER SIZE
UB406B	UB406x140x46
UB406E	UB406x178x60
UC203A	UC203x203x46
UC356B	UC356x368x153
UC356C	UC356x368x177
UC356E	UC356x406x235
UC356H	UC356x406x393
UC356K	UC356x406x551

PFCs TO SUPPORT CLADDING.
NOTE THAT ADDITIONAL
SECONDARY STEELWORK MAY BE
REQUIRED DEPENDING ON PLANT
SCREEN SUPPORT STRATEGY TO BE
DEVELOPED BY SUBCONTRACTOR

Rev	Description	Date	By	App
P03	ISSUED FOR AMENDED STAGE 3	18/11/2020	LE PA	IMJ
P02	ISSUED FOR STAGE 3	25/10/2019	CJH KP	IMJ
P01	ISSUED FOR STAGE 2	30/11/2018	BH KP	IMJ

PRELIMINARY

IoN / DRI
PLOT 3



tel 01223 321 195 cambridge@ramboll.co.uk
www.ramboll.co.uk

ROOF
GENERAL ARRANGEMENT

Project No:	Scale (@ A1):	Date:	Drawn:
1620004664	1 : 100	NOV '18	BH
Drawing No:	Rev:		
BEMP-RAM-P3-RF-DR-S-20-1700	P03		